

Developed Sites	Map #	Access	Elevation	Sites	Fee	Drinking Water	Accessible Features	Special Features
BLUE MOUNTAIN RANGER DISTRICT Phone: (541) 575-3000								
Billy Fields	1	FR 21	4200	3	No	No	No	Beautiful setting with big ponderosa pine. Adjacent to Fields Creek. Cedar Grove Botanical Area to the west.
Deerhorn	2	Co. Rd. 20	3900	5	\$8	No	No	Near Vinegar Hill - Indian Rock Scenic Area nearby with wildlife and wildflower viewing. On the Middle Fork John Day River with fishing.
Dixie	3	Hwy 26	5200	9	\$8	No	Yes	Close to Sumpter Valley Railroad Interpretive Trail and Dixie Lookout. Easy access from Highway 26. Thickly forested. Adjacent to a picnic area.
Head O’Boulder	4	FR 4500-537	7000	3	No	No	No	Within the Vinegar Hill - Indian Rock Scenic Area and near Indian Rock Lookout. Great views. Trails access from campsite.
Lower Camp Creek	5	FR 36	3600	6	\$6	No	No	On Camp Creek. Near Vinegar Hill - Indian Rock Scenic area with good views and trails. Low relative elevation allows for extended use season.
Magone	6	FR 3620	5000	21	\$13	Yes	Yes	Group campground and picnic shelter can be reserved at <a href="http://www.recreation.gov">www.recreation.gov</a> . Pristine lake with a boat launch. Hiking trails near campsites, bike trail network nearby, fishing for rainbow and brook trout.
Middle Fork	7	Co. Rd. 20	3800	10	\$8	No	No	Near Vinegar Hill - Indian Rock Scenic Area with wildlife and wildflower viewing. On the Middle Fork John Day River with fishing.
Oregon Mine	8	FR 2170	4300	5	No	No	No	Access to the Aldrich Mountains and Fields Peak trailhead. Adjacent to Murderer’s Creek. Cedar Grove Botanical Area to the southwest.
Parish Cabin	9	FR 16	4900	14	\$8	Yes	Yes	On Bear Creek, high meadow setting. Direct road to town of Seneca.
Starr	10	Hwy 395	5100	11	\$6	No	No	Easy access off State Highway 395. Near Swick Old Growth Interpretive Trail (ADA accessible) and Fall Mountain Lookout. Winter sport access nearby.
Wickiup	11	FR 15	4300	6	\$6	No	No	On Canyon Creek. Close access to two Strawberry Mountain Wilderness trailheads (Table Mountain, Buckhorn Meadows).
PRAIRIE CITY RANGER DISTRICT Phone: (541) 820-3800								
Big Creek	12	FR 815	5100	15	\$8	Yes	Yes	On Big Creek, in Logan Valley with great wildlife and wildflower viewing. Near three Strawberry Mountain Wilderness trailheads. Biking available on historic railroad grades in vicinity.
Crescent	13	Co. Rd. 62	5200	4	No	No	No	In John Day River headwaters. Just east of Strawberry Mountain Wilderness, access from Skyline trailhead. Motorized trails on Lookout Mountain.
Elk Creek	14	FR 16	5000	5	No	No	No	On Elk Creek with close access North Fork Malheur Wild & Scenic River Corridor. Hiking, equestrian, bike, and motorized trails nearby.
Little Crane	15	FR 16	5500	4	No	No	No	Bisected by Little Crane Creek. Quiet, spacious campsites.
Murray	16	FR 924	5200	6	\$8	No	No	On Lake Creek in Logan Valley with great wildlife and wildflower viewing. Three Strawberry Mountain Wilderness trailheads nearby. Just north of Lake Creek Youth Camp.
North Fork Malheur	17	FR 1675	4700	6	No	No	No	On the North Fork Malheur Wild and Scenic River, with river trailhead one mile north (hike, horse, bike). Beautiful site with direct fishing access.
Pine Creek Horse Camp	18	FR 5401	7900	3	No	No	No	Two corrals for stock. Adjacent trailhead for Pine Creek Trail. Views of the John Day River Valley. Access to Baldy Mountain.
Slide Creek	19	FR 6001	4900	3	No	No	No	On Slide Creek in Strawberry Mountain Wilderness “cherry stem”. Quick access to three wilderness trailheads. Horse facilities nearby. Winter parking at road gate for access to Strawberry Basin.
Slide Horse	20	FR 6001	4900	3	\$6	No	No	In Strawberry Mountain Wilderness “cherry stem”. Quick access to three wilderness trailheads. Large, robust corrals for stock.
Strawberry	21	FR 6001	5700	10	\$8	Yes	No	On Strawberry Creek. Immediate access to Strawberry Mountain Wilderness lakes basin.
Trout Farm	22	Co. Rd. 62	4900	6	\$8	Yes	Yes	In John Day River headwaters. Dispersed picnic tables and a group picnic shelter (no reservations, no fee). Short trail around pond with fishing.
EMIGRANT CREEK RANGER DISTRICT Phone: (541) 573-4300								
Buck Springs	23	FR 4545	5000	6	\$6	No	Yes	Large Ponderosa pines. Access to hiking and ATV riding.
Delintment Lake	24	FR 41	5600	29	\$10	Yes	Yes	Beautiful lake with boat launch. Fishing, swimming, hiking, & a picnic area.
Emigrant	25	FR 4340-50	5100	7	\$8	No	No	Access to Emigrant Creek. Fishing and hiking available.
Falls	26	FR 4300-50	5000	6	\$8	Yes	No	Access to Emigrant Creek. Fishing, hiking, and group picnic area available.
Idlewild	27	Hwy 395	5300	26	\$10	Yes	Yes	Group picnic shelter can be reserved at <a href="http://www.recreation.gov">www.recreation.gov</a> . Access to an interpretive trail with good birdwatching.
Joaquin Miller	28	Hwy 395	5600	12	\$8	Yes	Yes	Horse corral and horse-riding opportunities on adjacent closed forest roads.
Rock Springs	29	FR 17	5300	12	\$6	No	Yes	Access to nearby mushroom picking and ATV riding.
Tip Top	30	FR 41	5600	3	\$6	No	Yes	Close to Delintment Lake. Hiking access nearby.
Yellowjacket	31	FR 3745	4800	24	\$10	Yes	Yes	Fishing, boat launch, boating, bird watching.

FR - Forest Road  
Co. Rd. - County  
Hwy - Highway

*Accessible Features:* The campgrounds listed with “Yes” under accessible features may have some hardened surfaces as well as fire rings, grills, picnic tables and restroom facilities that meet the minimum criteria for being accessible to all visitors.

For more information:  
[www.fs.usda.gov/malheur](http://www.fs.usda.gov/malheur)

**Blue Mountain Ranger District**  
P.O. Box 909  
431 Patterson Bridge Road  
John Day, Oregon 97845  
(541) 575-3000

**Prairie City Ranger District**  
P.O. Box 337  
327 SW Front St  
Prairie City, Oregon 97869  
(541) 820-3800

**Emigrant Creek Ranger District**  
265 Highway 20 South  
Hines, Oregon 97738  
(541) 573-4300

To make reservations for the Group  
Camping Area or the Picnic Shelters  
visit:

[www.recreation.gov](http://www.recreation.gov)  
or call 1-877-444-6777 (toll free)



General Information

All camping is first-come, first-served – in designated sites only. Magone Lake Group Camp is the only reservable campsite. Campgrounds are typically available from May 1 - October 31.

Amenities

Each developed campground has the following:

- Numbered sites
- Fire rings
- Picnic tables
- Toilet facilities
- Access roads

Some campgrounds may also have drinking water.

Campgrounds do **NOT** have the following:

- Shower facilities
- RV holding tank dump stations (Stations are available at some local RV parks.)
- Trash service (Please take your trash with you and leave your site cleaner than you found it.)

Camping Limits

- Camping is limited to 14 days in developed campgrounds. (Forest Order 06-04-00-21-08)
- Maximum limit of eight people, one RV, two vehicles (second incurs a fee), four motorcycles, or 5 bicycles per campsite.

Rules and Regulations

Be safe, preserve our forest, and be respectful of others by following these rules:

- Keep all pets leashed when in developed areas, including campgrounds and picnic areas.
- Fire restrictions may be in place during your stay. Check for the most updated information.
- Gathering dead/down personal use firewood is allowed while camping. Do not cut or damage live trees or take firewood when you depart.
- Archaeological resources are precious and irreplaceable. Please leave them for future visitors to enjoy.

April 2022



United States Department of Agriculture  
Forest Service • Pacific Northwest Region

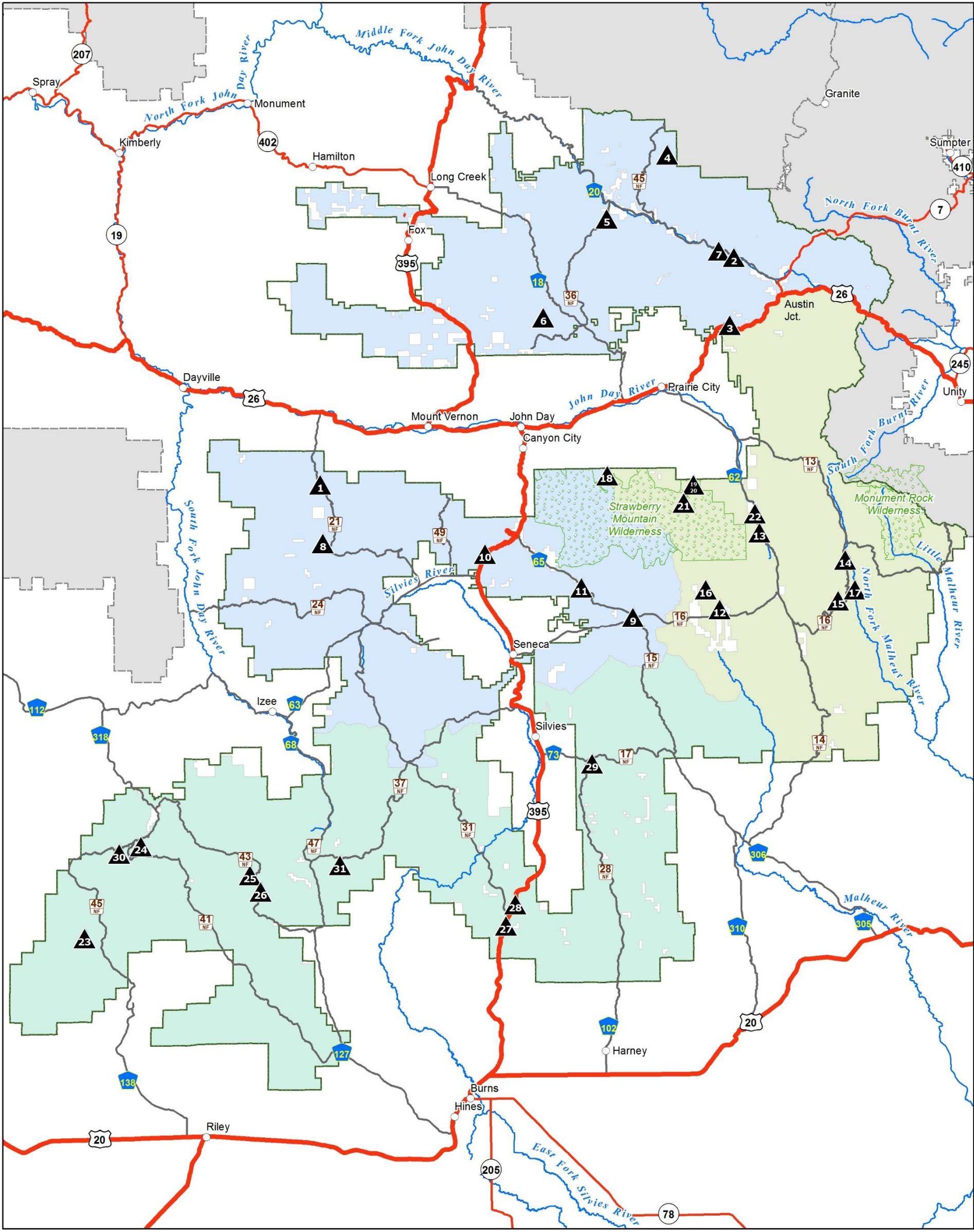
Malheur  
National  
Forest  
Campground  
Guide



Magone Lake Campground  
Blue Mountain Ranger District



# Malheur National Forest Campgrounds



Campground	Major Road	Blue Mountain Ranger District
U. S. Highway	Wilderness	Emigrant Creek Ranger District
State Highway	Other National Forest	Prairie City Ranger District

0 5 10 15 20 Miles

