

# Operator Responsibilities

## What You Need To Know

### What can I ride?

As described in the Umatilla National Forest Motor Vehicle Use Map (MVUM), trails within the Desolation and Winom-Frazier systems are open to Class I (Quads) and Class III (Motorcycle) ATVs. Not every trail is open to both classes as some trails are designated for motorcycle use only. In addition, trails allowing Class IV vehicles may also allow Class IV (Side by Side) vehicles in the area. The trail system is located solely on the North Fork John Day Ranger District of the Umatilla National Forest.



# Welcome to the Winom-Frazier OHV Complex and Desolation OHV Trail System

The Winom-Frazier OHV Complex is located on both the North Fork John Day Ranger District of the Umatilla National Forest as well as the La Grande Ranger District of the Umatilla National Forest. The Desolation Trail System is located solely on the Umatilla National Forest's Motor Vehicle Use Map (MVUM).

The trails displayed on these maps are well-signed and offer a full range of challenges from easiest to most difficult. The two trail systems provide off-road riders more than 130 miles of challenging trails as well as access to scenic views, fishing, hunting, and other recreation activities. Elevations in the two riding areas vary from 4,600 ft. near Cabble Creek to over 7,000 ft. on Desolation Mountain. The number of trails open to riding varies with weather and season. Most trails are maintained for use from June through September, however some seasonal closures exist. Please read your map carefully and respect all posted closures.

Trails are designed for Class I (Quads) and Class III (Motorcycle) ATVs, however some Class IV (Side x Sides) may be legal if they are less than 50" wide as measured at the widest point (see Operator Responsibilities for more information). Some trails have been designed for Class III use only and have been signed accordingly. The Winom-Frazier OHV Complex is not an OHV Park. Off-Highway Vehicles are allowed on designated routes only (see Umatilla National Forest MVUM). These trails are also open to horses, mountain bikes, and other recreationists. Please be considerate of other users while riding the trail.

Some trails border portions of the North Fork John Day Wilderness and Vinegar Hill Scenic Area. Special regulations apply regarding motorized or mechanical travel in these areas. Restricted motorized travel to designated routes and respect adjacent private and owner property. **NOTE: The terms OHV (off Highway Vehicle) and ATV (All Terrain Vehicle) are used interchangeably in this document.**

### HOW TO GET THERE

The Winom-Frazier OHV Complex is located approximately 60 miles south of Pendleton, 35 miles west of La Grande, and 16 miles east of Ukiah, with access from Forest Roads 33 and 52, 52.5, 51, and 5160. The Desolation OHV Trail System is located approximately 33 miles south of Ukiah and 75 miles north of John Day, and is accessed via Forest Roads 55 and 10.

### VISITOR INFORMATION

For information on places to stay, where to eat, or where to shop, contact the Bureau and Chamber of Commerce (541) 276-7411, the La Grande/Ukiah County Visitor's Bureau and (800) 848-9969 or the Grant County Chamber of Commerce (800) 769-5664.



These trails and facilities are operated and maintained for your enjoyment through a cooperative effort by the Forest Service, Oregon ATV Fund, Motorcycle Riders Association, and many other volunteers.

**What's required to ride? (abbreviated from 2013 Oregon OHV Guide)**

- For all legal classes, operators must abide by the following:
  - Youth operators under age 16 must be supervised by an adult.
  - Operators and passengers under age 18 must wear a DOT approved motorcycle helmet with the chin strap fastened.
  - Possess a valid Oregon Parks and Recreation (OPRD) ATV Safety Education Card

**In addition:**

- Operators under age 16 must meet all the Rider Fit rules as described by the State of Oregon (Oregon OHV Guide)
- Class III (Motorcycle) must:
  - Be at least 7 years of age
  - Class IV (Side by Side) must:
    - Possess valid driver license unless manufacturer recommendation suggest otherwise
    - Safety restraints must be worn by all riders under age 16.

All vehicles must have:

- Appropriate class ATV sticker (Operating Permit)
- USFS approved spark arrester
- Muffler under 99db
- Head lights and taillights after dark
- Class I - foot pads
- Class III - foot pegs for rider and passenger
- Class IV - fire extinguisher, roll bar or enclosed cab, seats and seatbelts for all occupants, and windshield wipers if equipped with windshield

**What else you need to know?**

Permit to operate the ATV on public lands in Oregon.

An ATV Operating Permit (sticker) issued in another state will be honored in Oregon the issuing state also honors an Oregon ATV Operating Permit. No matter the Class of ATV, operators must have a resident state ATV operating permit or an Oregon ATV Operating Permit to operate the ATV on public lands in Oregon.

It is unlawful to operate an OHV under the influence of drugs or alcohol or in a manner that endangers the safety of others. Operators with suspended or revoked driver's license may not operate any Class ATV. Free online training and information may be found at: [www.ridatvfororegon.org](http://www.ridatvfororegon.org) or [www.oregonohv.org](http://www.oregonohv.org).

## Soils, Plants, and Wildlife

### Soils

The soils of the Winom-Frazier OHV Complex and Desolation OHV Trail System tend to be either shallow and rut easily when wet, or deep volcanic ash that is prone to compaction and when dry, create dusty conditions. These soils can be easily impacted and displaced. However, proper trail alignment, construction, and maintenance can minimize these impacts. Our task is to bring these trails up to standard and keep them there, which may mean temporary trail closures while work is being performed. Your task is to stay on the designated trails and areas and, as always, Tread Lightly!



### Meadows and Plants

Beautiful mountain meadows provide a variety of native sedges, camas, and bog orchids. These mountain meadows are important habitat for many species - some of which are federally listed as sensitive or threatened. Meadows are also very fragile. One trip through a wet area can be visible for decades and can encourage other use in these delicate meadows.

The Blue Mountains offer a variety of botanical opportunities. The coniferous forests are filled with lodgepole pine, ponderosa pine, Douglas fir, huckleberries, ninebark and snowberry. In dryer areas, where lava flows dominate the landscape, sagebrush and bunchgrass can be found. Over a thousand different plant species are located in the area with some, such as the Blue Mountain Onion, unique to this region.

Noxious weeds are plants that are not natural residents of this ecosystem. Some are poisonous, spread rapidly, and can out-compete native plants for light and water. Seeds from noxious weeds can lodge in tires or tight places on your OHV and other vehicles and can easily be transported from place to place. The spread of these weeds can be reduced by thoroughly washing your equipment before leaving home.

### Wildlife

There are many forms of wildlife in these OHV riding areas. Some are listed as threatened and endangered and are mandated to be protected. Please remember that this is their home seven days a week and that you are a visitor. You can avoid being an intruder by keeping your noise down and staying on the designated trails. When you encounter wildlife, slow down, watch and enjoy them, but keep moving.

### Know Before You Go. Call Ahead For Information

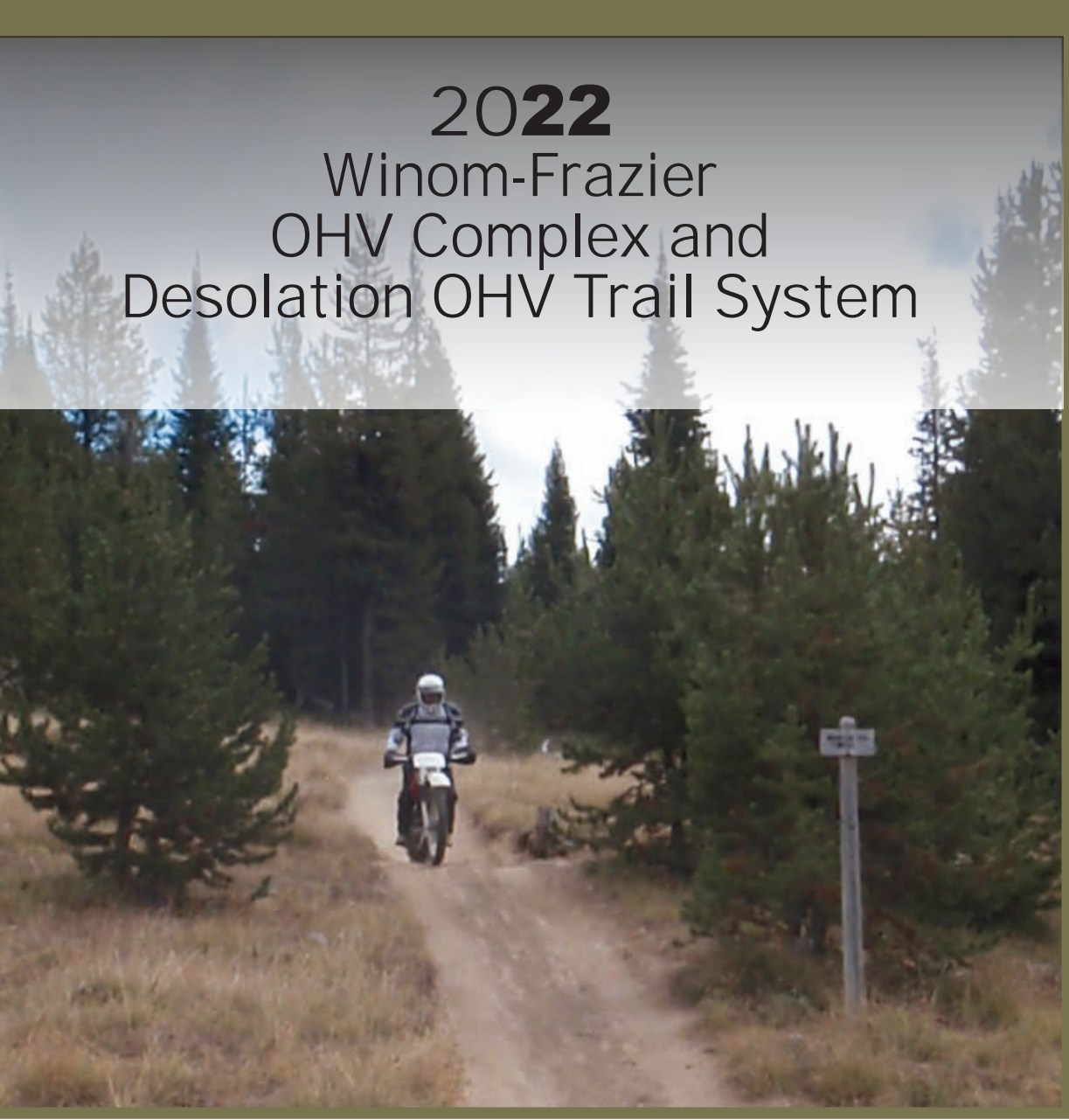
For questions relating to trails, closures, conduct, rules, regulations and concerns please contact:

**North Fork John Day Ranger District**  
**Umatilla National Forest**  
 P.O. Box 158  
 Ukiah, OR (541) 427-3231  
 District OHV Specialist, (541)-427-5326  
[www.fs.usda.gov/umatilla](http://www.fs.usda.gov/umatilla)

**LaGrande Ranger District**  
**Wallowa-Whitman National Forest**  
 3502 Highway 30  
 LaGrande, OR (541) 963-7186  
 District OHV Specialist, (541)-742-6701  
[www.fs.usda.gov/wallowa-whitman](http://www.fs.usda.gov/wallowa-whitman)

In accordance with Federal civil rights law and U.S. Department of Agriculture (USDA) civil rights regulations and policies, the USDA, its Agencies, offices, and employees, and institutions participating in or administering USDA programs are prohibited from discriminating based on race, color, national origin, religion, sex, gender identity (including gender expression), sexual orientation, disability, age, marital status, family/parental status, income derived from a public assistance program, political beliefs, or reprisal or retaliation for prior civil rights activity, in any program or activity conducted or funded by USDA (not all bases apply to all programs). Remedies and complaint filing deadlines vary by program or incident. Persons with disabilities who require alternative means of communication for program information (e.g., Braille, large print, audiotape, American Sign Language, etc.) should contact the responsible Agency or USDA's TARGET Center at (202) 720-2600 (voice and TTY) or contact USDA through the Federal Relay Service at (800) 877-8339.

To file a program discrimination complaint, complete the USDA Program Discrimination Complaint Form, AD-3027, found online at [http://www.ascr.usda.gov/complaint\\_filing\\_cust.html](http://www.ascr.usda.gov/complaint_filing_cust.html) and at any USDA office or write a letter addressed to USDA and provide in the letter the information requested in the form. To request a copy of the complaint form, call (866) 632-8992. Submit your completed form or letter to USDA by: (1) mail: U.S. Department of Agriculture, Office of the Assistant Secretary for Civil Rights, 1400 Independence Avenue, SW, Washington, D.C. 20250-9410; (2) fax: (202) 690-7442; or (3) email: [program.intake@usda.gov](mailto:program.intake@usda.gov). F14-NF-03-18



North Fork John Day Ranger District  
**Umatilla National Forest**  
 LaGrande Ranger District  
**Wallowa-Whitman National Forest**

## Safety, Fire and Camping

### Safety

Both the Winom-Frazier OHV Complex and the Desolation OHV Trail System are located in remote areas and visitors should be equipped to be self-sufficient. Riders should wear appropriate safety gear, carry a first aid kit, and never ride alone. Most Forest Service personnel have radios and can give assistance. Cell phone coverage is marginal throughout the area and should not be relied upon.

All trails within these OHV riding areas are two-way. Many of the trails are tight and narrow and are maintained in a manner to provide a primitive trail experience. Thus, there are numerous blind turns-hikers, other riders, horses or mountain bikes should be anticipated around every turn. Ride defensively and watch for other recreationists. Don't ride in the dust of other riders and please use hand signals when encountering other riders to indicate the number of riders behind you. Rocks and logs will be slippery when wet. Riding fast is hazardous and not recommended.



### Fire

Campfires are permitted, but you must keep them small and don't leave them unattended. High winds and dry conditions can fuel a wildfire even at unlikely times of the year. Spark arresters are required on your OHVs, chainsaws, and generators year round. Later in the summer, there may be restrictions on campfires, smoking, BBQs, and off-road use, so please check at the North Fork John Day or LaGrande Ranger District offices or watch for regulations posted at trailheads, staging areas and major access roads.

### Camping

There are many dispersed campsites throughout the two trail systems, or you can stay at one of five developed campgrounds associated with these OHV areas. These campgrounds do not provide water, electricity, or garbage collection service, so please, remove your garbage and dispose of it at home. Single site occupancy is a maximum of eight people, two vehicles (not including ATVs), and two structures (tents and or trailers). Group occupancy varies and will be posted at each campground.

**Winom Creek Campground**, located 22 mi. SE of Ukiah, OR off FS Road 52, is the southern staging area for the Winom-Frazier trail system. It offers 7 single campsites and 3 group sites (two with shelters) with tables, fire rings, and 2 vault toilets. Single sites are \$10/night and group sites are \$25/night.

**Frazier Campground**, located 16 mi. east of Ukiah, OR, is the northern staging area for the Winom-Frazier trail system. It offers 16 single campsites and 5 group sites with tables, 1 picnic area, fire rings, and 4 vault toilets. Pull-thru parking is available at 8 of the single sites. Single sites are \$10/night and group sites are \$25/night.

**Umapine Campground**, located 37 mi. SW of La Grande, OR off FS Road 5160 accesses the central part of the Winom-Frazier system. There are 3 group campsites and 5 single sites with tables, fire rings, and 1 vault toilet. No fee required at the time this brochure was printed.

**Big Creek Campground**, located 24 miles southeast of Ukiah, OR off FS Road 52. This small campground with 3 camp sites and one vault toilet suits large groups well. No fee required at the time this brochure was printed.

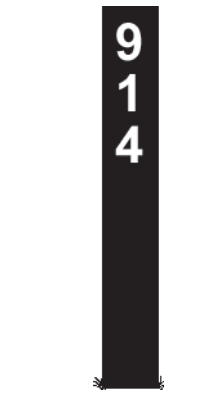
**Oriental Campground**, located on Forest Road 5506, 12 miles east of Dale, OR, accesses the Winom-Frazier system via the River Trail. The last few miles are rough and may not be appropriate for trailers. There are 7 single sites and 1 group site, with tables, fire rings, and 2 vault toilets. Single sites are \$8/night and group sites are \$25/night.

## Signing

### National Forest Route Markers



**Horizontal Marker:**  
 Roads maintained for LOW clearance vehicles, such as passenger cars.



**Vertical Marker:**  
 Roads suitable for HIGH clearance vehicles only. Not maintained for passenger car use.



Open to motorcycles



Open to All Terrain Vehicles less than 50" in width



Signs with a yellow slash indicate the route is not recommended for the particular use. A red slash indicates the use is prohibited.

### Degree of Difficulty

Ratings are assigned to trails under ideal conditions and are based on difficulty compared to other trails in the area. A trail rated easiest at Winom-Frazier OHV Complex could possibly be rated more or even most difficult elsewhere. Trail conditions are always subject to change due to the weather and other acts of nature.



(Black Diamond) Most Difficult



(Blue Square) Moderate



(Green Circle) Easy

## Travel Management Roads and Off-Highway Vehicle (OHV) Use

Oregon State Law allows OHV travel on roads open to the public that are not double-lane gravel or paved, with the exception of additional roads closed by the land owner or management agency.

In addition, each Blue Mountain Forest is in various stages of analysis and implementation of the 2005 Travel Management Rule which governs OHVs and other motor vehicle use on national forests. The Rule directs each National Forest to identify and designate roads, trails, and areas suitable for motorized use and prohibit use of motor vehicle outside of the designated system.

The Umatilla National Forest completed the travel plan process and has developed Motor Vehicle Use Maps (MVUM) that display National Forest System routes (roads, trails and areas) designated for motorized travel. MVUMs are free and are available at all Umatilla National Forest offices or can be viewed and printed on the Forest's website. Contact the Forest Service office nearest you to learn more.

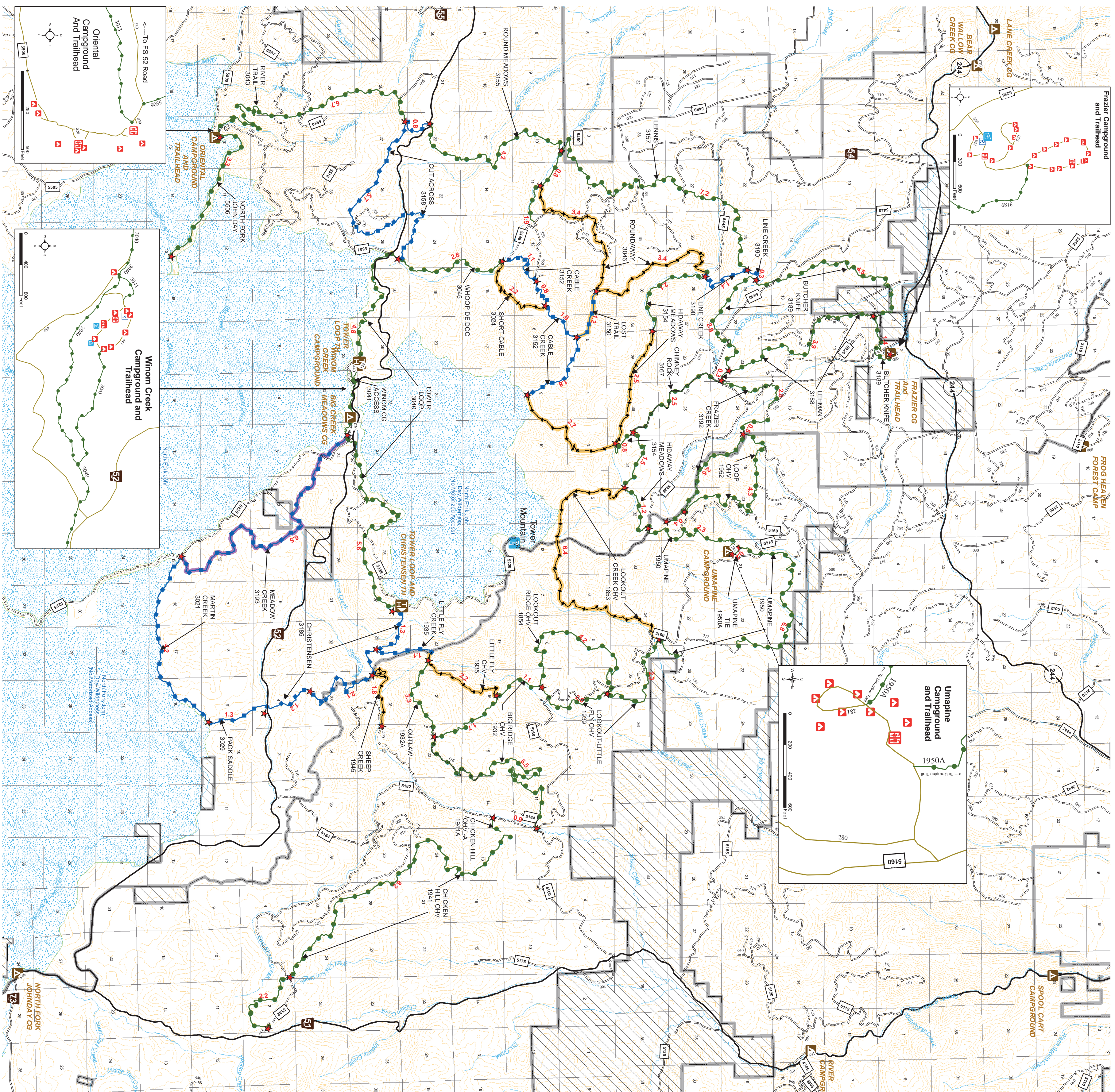
**It is your responsibility to research the area and know what roads and trails are open to motorized travel.**

Please enjoy your ride and

**treadlightly!**  
 ON LAND AND WATER

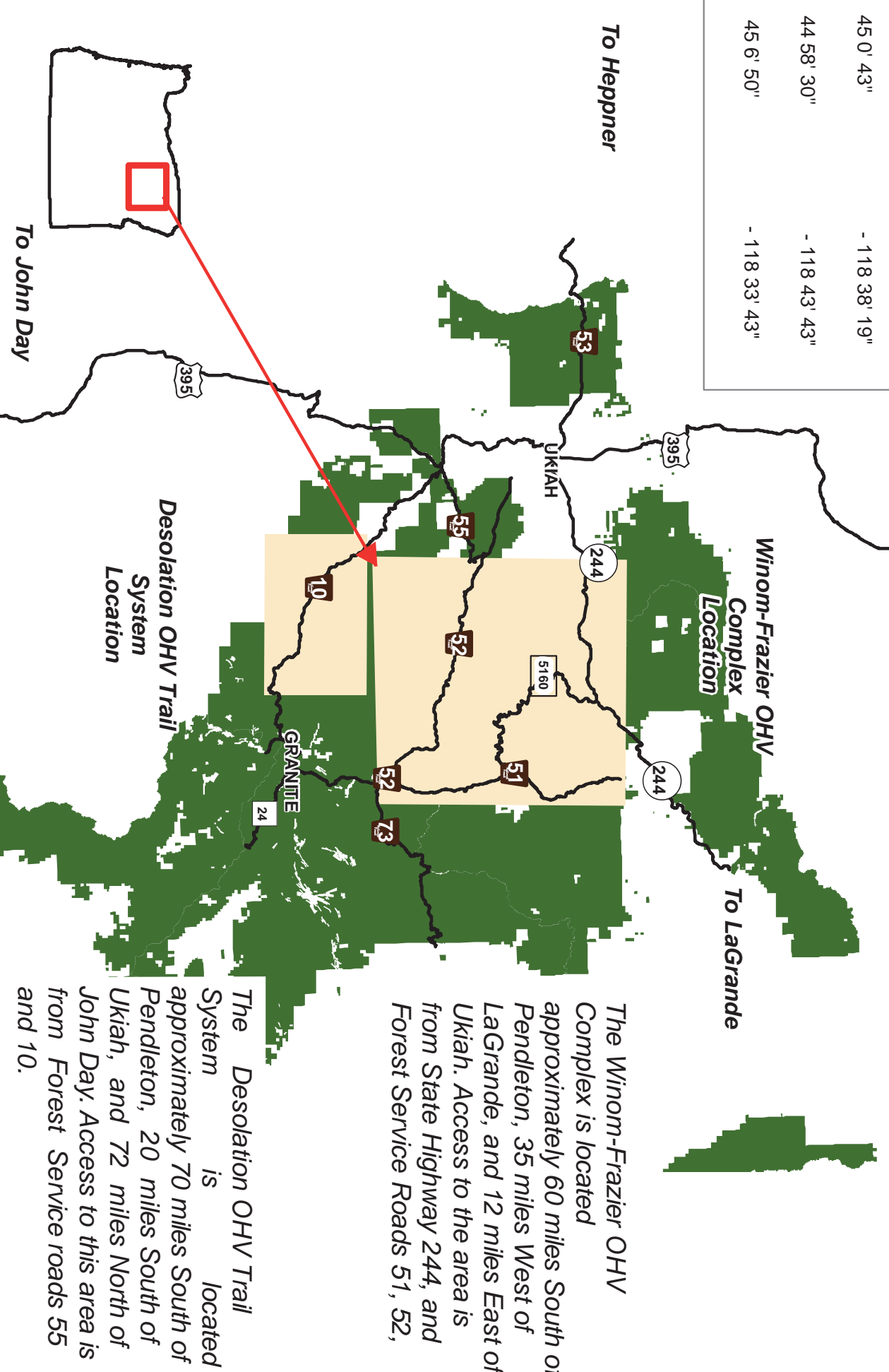


# Winom-Frazier OHV Complex



Location:	Latitude	Longitude
Frazier Trailhead	45 9 35"	-118 38 23"
Tower Mountain Lookout	45 3 16"	-119 34 5"
Winom Trailhead	45 0 43"	-118 38 19"
Oriental Trailhead	44 58 30"	-118 43 43"
Unapine OHV Trailhead	45 6 50"	-118 33 43"

**Where Are We Located**



The Winom-Frazier OHV Complex is located approximately 60 miles South of Pendleton, 35 miles West of LaGrande, and 12 miles East of Ukiah. Access to the area is from State Highway 244 and Forest Service Roads 51, 52, and 10.

The Desolation OHV Trail System is located approximately 70 miles South of Pendleton, 20 miles South of John Day, and 72 miles North of Forest Service roads 55 and 10.

### Legend

	Paved Road		Non Forest Service Land
	Gravel Road		Section Lines
	Dirt Road		Wilderness
	Easy Trail		Forest Boundary
	Moderate Trail		Mileage Between Points Indicated in Red Type
	Most Difficult Trail		Trailhead
	Seasonally Closed Trail (Labor Day Through Memorial Day)		Campground
	Class One ATV's Prohibited		Lookout Tower (Labor Day Through Memorial Day)
	Streams		Day Use Shelter
	100 Foot Contours		ATV Loading Ramp
			Restroom
			Camp Site

