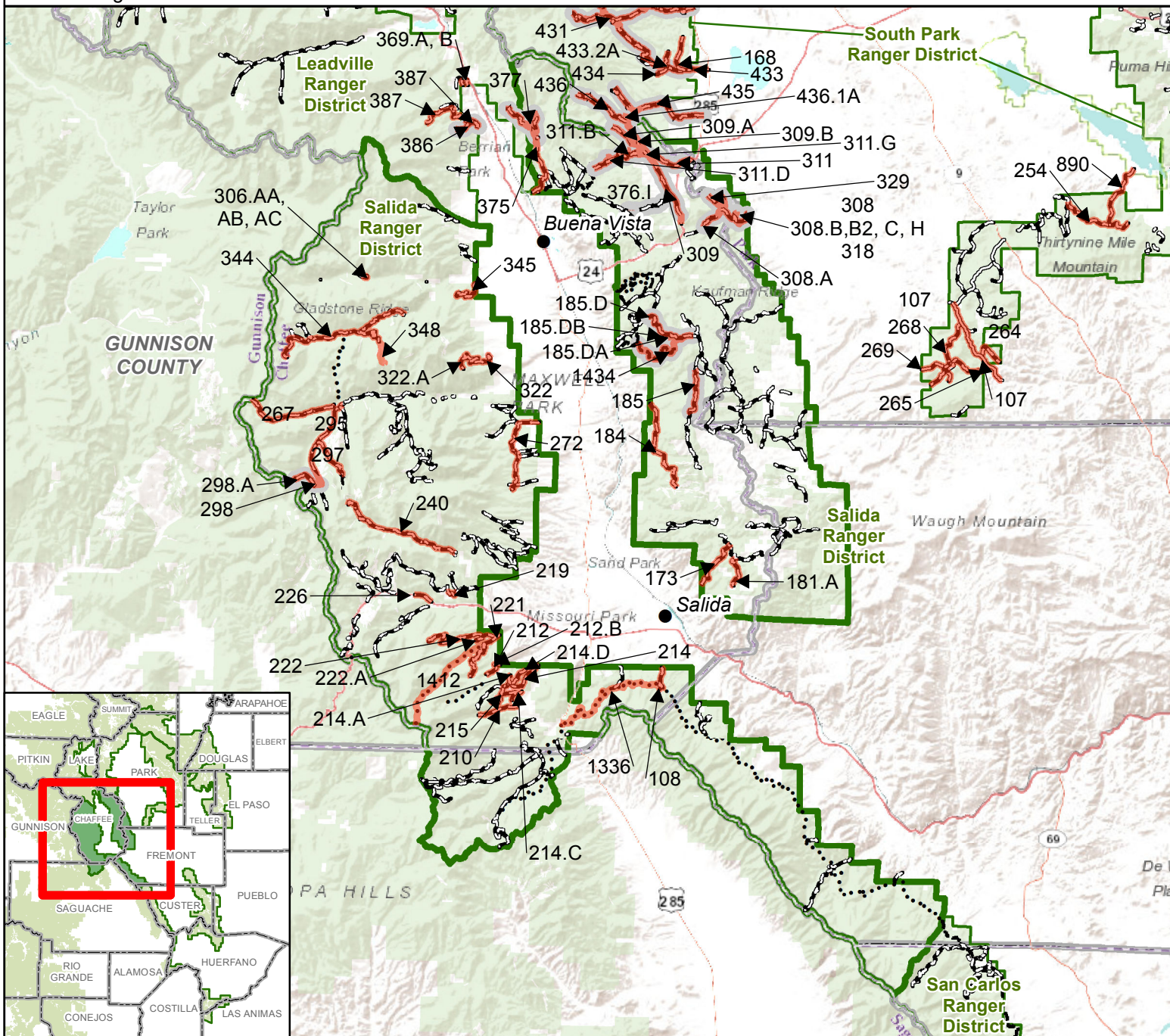


Rocky Mountain Region 2  
Salida Ranger District



- Described Roads and Trails**

  - County Boundaries
  - Salida Ranger District Boundary
  - PSICC Ranger District Boundary
  - Non-Forest Service Lands
  - USDA Forest Service Lands

**MVUM Route Information (Salida data valid for 2017)**

  - Roads Open to All Vehicles, Yearlong
  - Roads Open to All Vehicles, Seasonal
  - Roads Open to Highway Legal Vehicles Only, Yearlong
  - Roads Open to Highway Legal Vehicles Only, Seasonal
  - Special Designation, Yearlong
  - Special Designation, Seasonal
  - Trails Open to All Vehicles, Yearlong
  - Trails Open to Vehicles 50" or Less in Width, Yearlong
  - Trails Open to Vehicles 50" or Less in Width, Seasonal
  - Trails Open to Motorcycles Only, Yearlong

## Exhibit B

## Seasonal Prohibition of Motor Vehicles on Roads and Trails

Appendix B-1 Public Routes Final ROD  
supersedes GIS data.

Project website:  
<https://www.fs.usda.gov/project/?project=48214>

**DISCLAIMER:** GIS data and product accuracy may vary. The Forest Service reserves the right to correct, update, modify, or replace GIS products without notification. For more information, contact the Pike & San Isabel NF, Cimarron & Comanche NG, Pueblo, CO.  
(719) 553-1400.



A horizontal number line with tick marks at 0, 4.5, 9, and 18. The word "Miles" is at the right end. A white rectangular segment is highlighted between the 4.5 and 9 marks.