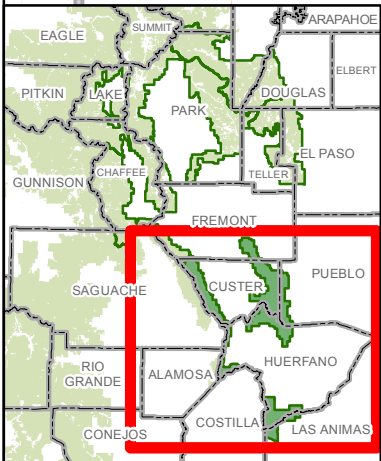
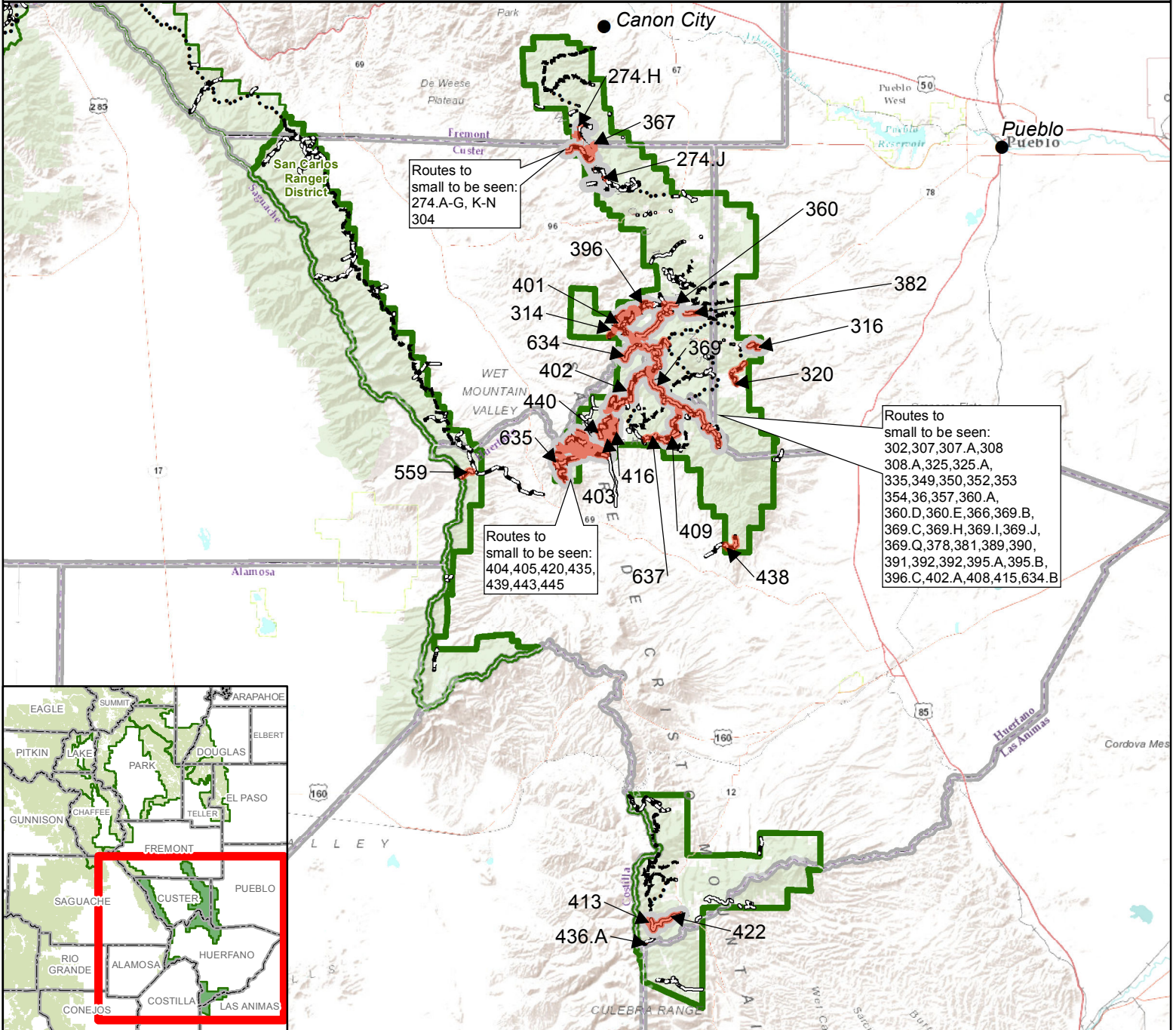
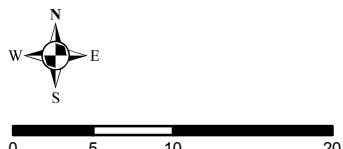


Pike-San Isabel National Forests

Rocky Mountain Region 2
San Carlos Ranger District



- Described Roads and Trails**
- County Boundaries
 - San Carlos Ranger District Boundary
 - PSICC Ranger District Boundary
 - Non-Forest Service Lands
 - USDA Forest Service Lands
- MVUM Route Information (San Carlos data valid for 2020)**
- Roads Open to All Vehicles, Yearlong
 - Roads Open to All Vehicles, Seasonal
 - Roads Open to Highway Legal Vehicles Only, Yearlong
 - Roads Open to Highway Legal Vehicles Only, Seasonal
 - Special Designation, Yearlong
 - Special Designation, Seasonal
 - Trails Open to All Vehicles, Yearlong
 - Trails Open to Vehicles 50" or Less in Width, Yearlong
 - Trails Open to Vehicles 50" or Less in Width, Seasonal
 - Trails Open to Motorcycles Only, Yearlong



Order 02-12-23-02 Exhibit C Seasonal Prohibition of Motor Vehicles on Roads and Trails

Appendix B-1 Public Routes Final ROD
supersedes GIS data.
Project website:
<https://www.fs.usda.gov/project/?project=48214>

DISCLAIMER: GIS data and product accuracy may vary.
The Forest Service reserves the right to correct, update,
modify, or replace GIS products without notification. For
more information, contact the Pike & San Isabel NF,
Cimarron & Comanche NG, Pueblo, CO.
(719) 553-1400.