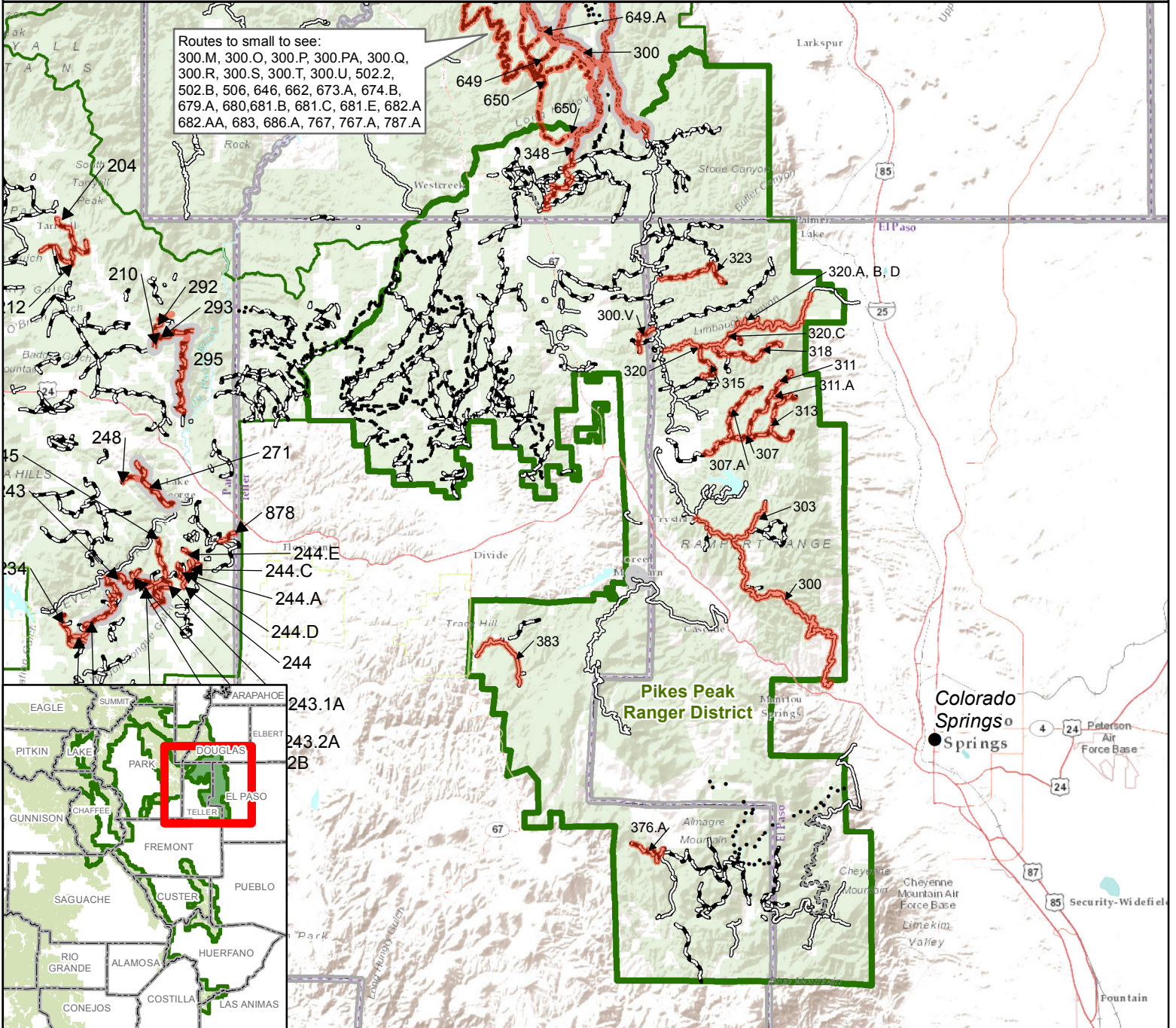


Pike-San Isabel National Forests

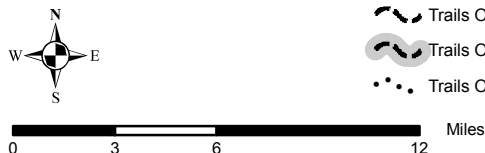
Rocky Mountain Region 2
Pikes Peak Ranger District



Routes to small to see:
300.M, 300.O, 300.P, 300.PA, 300.Q,
300.R, 300.S, 300.T, 300.U, 502.2,
502.B, 506, 646, 662, 673.A, 674.B,
679.A, 680, 681.B, 681.C, 681.E, 682.A
682.AA, 683, 686.A, 767, 767.A, 787.A



- Described Roads and Trails
- County Boundaries
- Pikes Peak Ranger District Boundary
- PSICC Ranger District Boundary
- Non-Forest Service Lands
- USDA Forest Service Lands
- Roads Open to All Vehicles, Yearlong
- Roads Open to All Vehicles, Seasonal
- Roads Open to Highway Legal Vehicles Only, Yearlong
- Roads Open to Highway Legal Vehicles Only, Seasonal
- Special Designation, Yearlong
- Special Designation, Seasonal
- Trails Open to All Vehicles, Yearlong
- Trails Open to Vehicles 50" or Less in Width, Yearlong
- Trails Open to Vehicles 50" or Less in Width, Seasonal
- Trails Open to Motorcycles Only, Yearlong



Order 02-12-23-02
Exhibit E
Seasonal Prohibition of Motor Vehicles
on Roads and Trails

Appendix B-1 Public Routes Final ROD
supersedes GIS data.
Project website:
<https://www.fs.usda.gov/project/?project=48214>

DISCLAIMER: GIS data and product accuracy may vary.
The Forest Service reserves the right to correct, update,
modify, or replace GIS products without notification. For
more information, contact the Pike & San Isabel NF,
Cimarron & Comanche NG, Pueblo, CO.
(719) 553-1400.