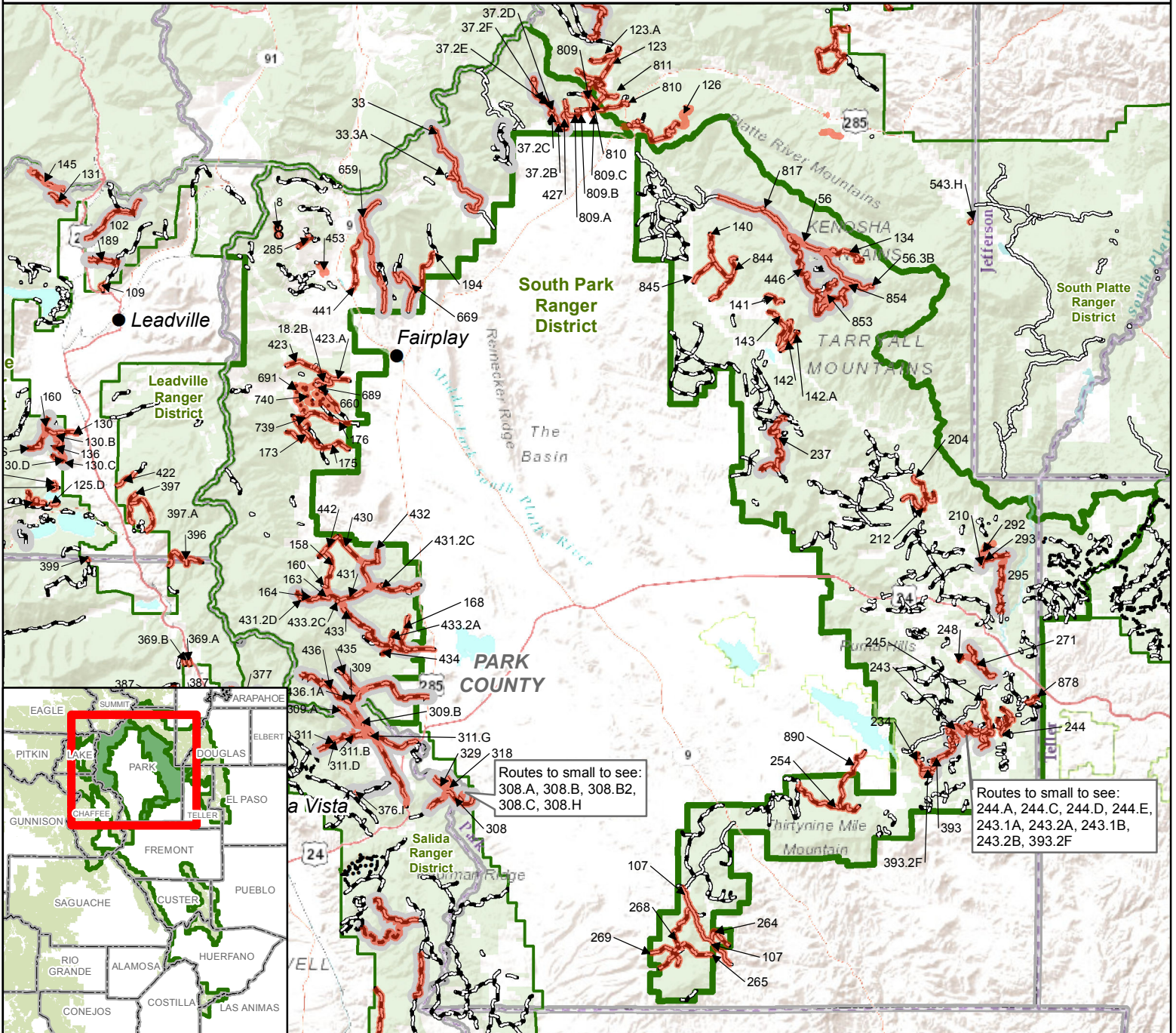
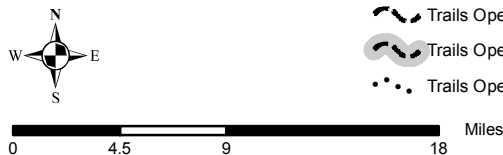


Pike-San Isabel National Forests

Rocky Mountain Region 2
South Park Ranger District



- Described Roads and Trails
 - County Boundaries
 - South Park Ranger District Boundary
 - PSICC Ranger District Boundary
 - Non-Forest Service Lands
 - USDA Forest Service Lands
-
- MVUM Route Information (South Park data valid for 2019)**
- Roads Open to All Vehicles, Yearlong
 - Roads Open to All Vehicles, Seasonal
 - Roads Open to Highway Legal Vehicles Only, Yearlong
 - Roads Open to Highway Legal Vehicles Only, Seasonal
 - Special Designation, Yearlong
 - Special Designation, Seasonal
 - Trails Open to All Vehicles, Yearlong
 - Trails Open to Vehicles 50' or Less in Width, Yearlong
 - Trails Open to Vehicles 50' or Less in Width, Seasonal
 - Trails Open to Motorcycles Only, Yearlong



Order 02-12-23-02
Exhibit E
Seasonal Prohibition of Motor Vehicles
on Roads and Trails

Appendix B-1 Public Routes Final ROD
supersedes GIS data.
Project website:
<https://www.fs.usda.gov/project/?project=48214>

DISCLAIMER: GIS data and product accuracy may vary. The Forest Service reserves the right to correct, update, modify, or replace GIS products without notification. For more information, contact the Pike & San Isabel NF, Cimarron & Comanche NG, Pueblo, CO. (719) 553-1400.