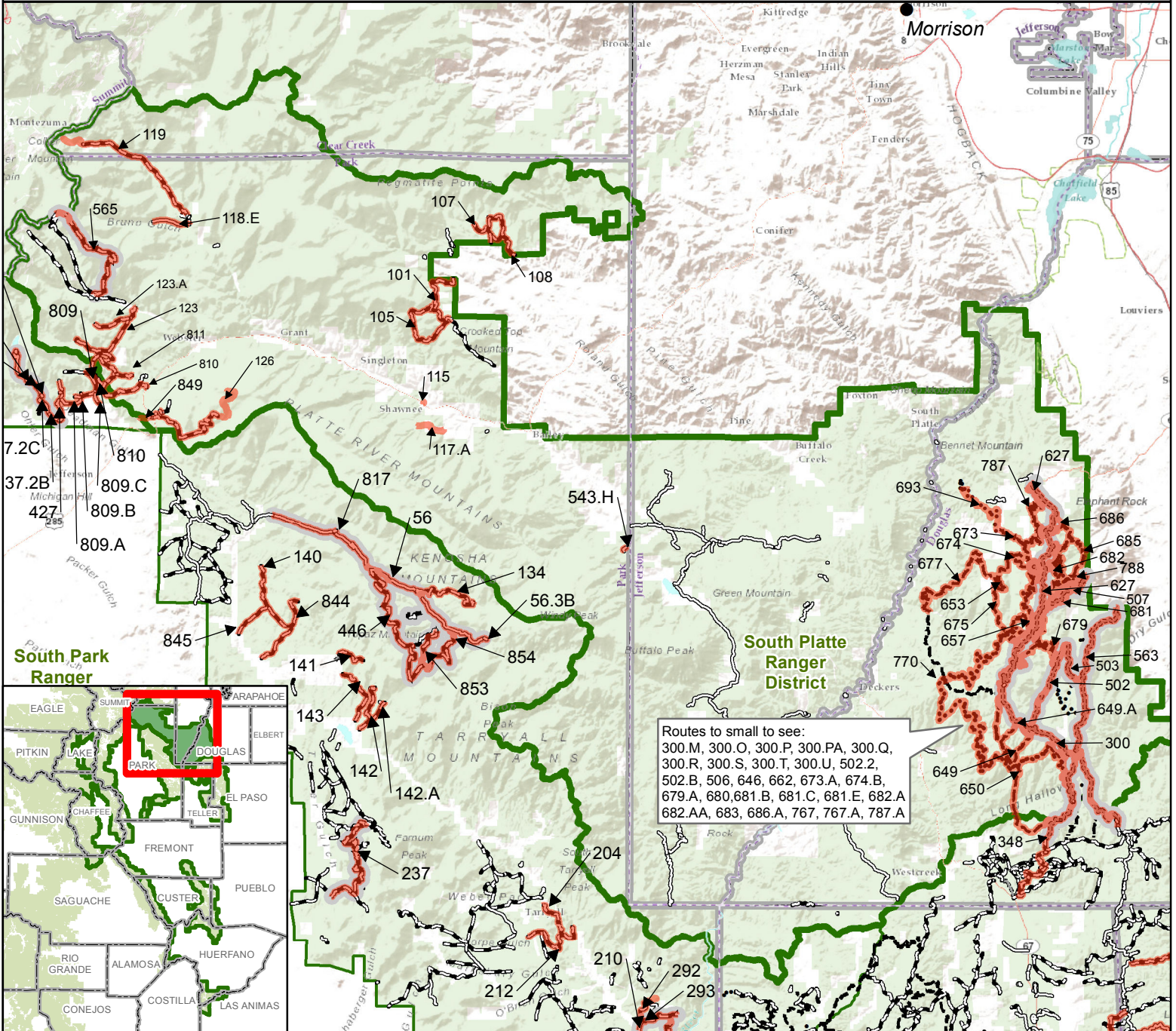


# Pike-San Isabel National Forests

Rocky Mountain Region 2  
South Platte Ranger District



- Described Roads and Trails
- County Boundaries
- South Platte Ranger District Boundary
- PSICC Ranger District Boundary
- Non-Forest Service Lands
- USDA Forest Service Lands



0 3.25 6.5 13 Miles

## MVUM Route Information (South Platte data valid for 2020)

- Roads Open to All Vehicles, Yearlong
- Roads Open to All Vehicles, Seasonal
- Roads Open to Highway Legal Vehicles Only, Yearlong
- Roads Open to Highway Legal Vehicles Only, Seasonal
- Special Designation, Yearlong
- Special Designation, Seasonal
- Trails Open to All Vehicles, Yearlong
- Trails Open to Vehicles 50" or Less in Width, Yearlong
- Trails Open to Vehicles 50" or Less in Width, Seasonal
- Trails Open to Motorcycles Only, Yearlong

Order 02-12-23-02

Exhibit E

## Seasonal Prohibition of Motor Vehicles on Roads and Trails

Appendix B-1 Public Routes Final ROD  
supersedes GIS data.

Project website:

<https://www.fs.usda.gov/project/?project=48214>

DISCLAIMER: GIS data and product accuracy may vary. The Forest Service reserves the right to correct, update, modify, or replace GIS products without notification. For more information, contact the Pike & San Isabel NF, Cimarron & Comanche NG, Pueblo, CO. (719) 553-1400.