

# Motor Vehicle Use Map Umatilla National Forest



## OPERATOR RESPONSIBILITIES

Operating a motor vehicle on National Forest System roads, National Forest System trails, and in areas on National Forest System lands carries a greater responsibility than operating that vehicle in a city or other developed setting. Not only must the motor vehicle operators know and follow all applicable traffic laws, but they need to show concern for the environment as well as other forest users. The misuse of motor vehicles can lead to the temporary or permanent closure of any designated road, trail, or area. Operators of motor vehicles are subject to State traffic law, including State requirements for licensing, registration, and operation of the vehicle in question.

Motor vehicle use, especially off-highway vehicle use, involves inherent risks that may cause property damage, serious injury, and possibly death to participants. Riders should drive cautiously and anticipate rough surfaces and features, such as snow, mud, vegetation, and water crossings common to remote driving conditions. Participants voluntarily assume full responsibility for these damages, risks, and dangers. Motor vehicle operators should take care at all times to protect themselves and those under their responsibility.

Much of the Umatilla National Forest is remote, and medical assistance may not be readily available. Cellular telephones do not work in many areas of the Umatilla National Forest. Operators should take adequate food, water, first aid supplies, and other equipment appropriate for the conditions and expected weather.

**ALWAYS REMEMBER TO RESPECT PRIVATE LAND! PROTECT YOUR PRIVILEGE. STAY ON DESIGNATED ROADS AND TRAILS AND IN DESIGNATED AREAS.**

Read and understand this map in its entirety. If you have questions please contact the Umatilla National Forest for clarification.

Road, trail, and area users must comply with this map, as well as all Federal, State, and local laws and regulations. Compliance with these rules is the responsibility of the user.

## PURPOSE AND CONTENTS OF THIS MAP

This map shows National Forest System roads and trails on the Umatilla National Forest that are designated for motor vehicle use pursuant to 36 CFR 212.51. The map also contains a list of those designated roads and trails that shows the types of vehicles that are allowed on each, and any seasonal restrictions that apply.

Designation of a road, trail, or area for motor vehicle use by a particular class of vehicle under 36 CFR 212.51 should not be interpreted as encouraging or inviting use, or to imply that the road, trail, or area is passable, actively maintained, or safe for travel. Motor vehicle designations include parking along designated routes and at facilities associated with designated routes when it is safe to do so and when not causing damage to National Forest System resources. Seasonal weather conditions and natural events may render designated roads and trails impassable for extended periods. Designated areas may contain dangerous or impassable terrain. Many designated roads and trails may be passable only by high-clearance vehicles or four-wheel drive vehicles. Maintenance of designated roads and trails will depend on available resources, and many may receive little maintenance.

This motor vehicle use map identifies those roads, trails, and areas designated for the motor vehicle use under 36 CFR 212.51 for the purpose of enforcing the prohibition at 36 CFR 261.13. This is a limited purpose. The other public roads are shown for information and navigation purposes only and are not subject to designation under the Forest Service travel management regulation.

**These designations apply only to National Forest System roads, National Forest System trails, and areas on National Forest System lands.**

**CAMPING**  
Motor vehicle use off of designated roads on National Forest System lands for the purpose of dispersed camping is permitted for up to 300 feet from the centerline of the road.

**PARKING**  
Motor vehicles may be parked within one vehicle length from the edge of the road surface when it is safe to do so without causing damage to NFS resources or facilities, unless prohibited by state law, a traffic sign, or an order (36 CFR 261.54). The designation of a trail includes the width of the trail and, to promote public safety, the distance necessary to allow other users to pass where it is safe to do so without causing damage to NFS resources or facilities.

**Motorized Cross Country Travel**  
There are no areas open to off road use except as listed above in Camping or as listed in the Seasonal and Special Vehicle Designations Table.

**PROHIBITIONS**  
It is prohibited to possess or operate a motor vehicle on National Forest System lands on the Umatilla National Forest other than in accordance with these designations (36 CFR 261.13).

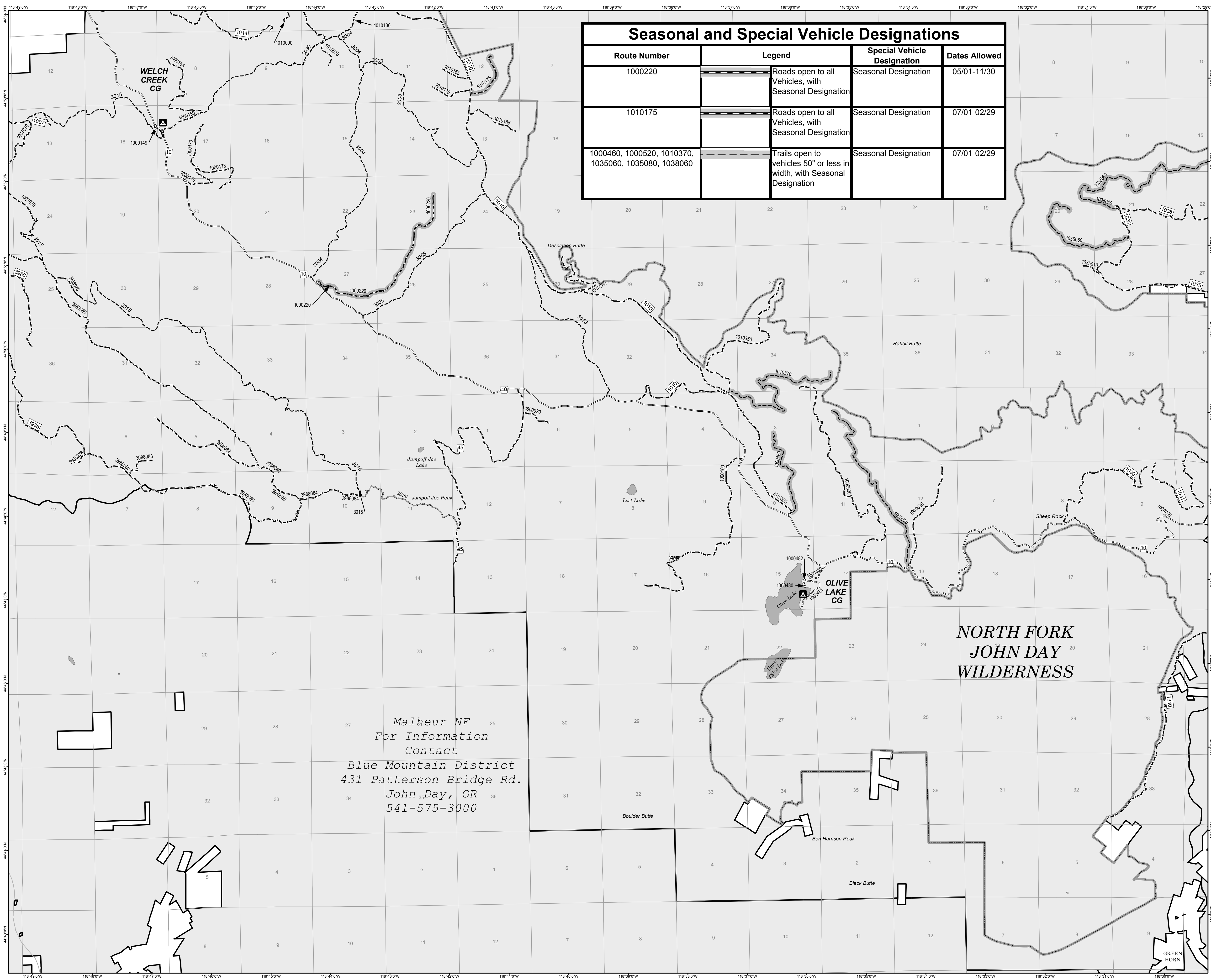
Violations of 36 CFR 261.13 are subject to a fine of up to \$5,000 or imprisonment for up to 6 months or both (18 U.S.C. 3571(e)). This prohibition applies regardless of the presence or absence of signs.

This map does not display nonmotorized uses, uses by over-snow vehicles, or other facilities and attractions on the Umatilla National Forest. Obtain a forest visitor map for more complete information.

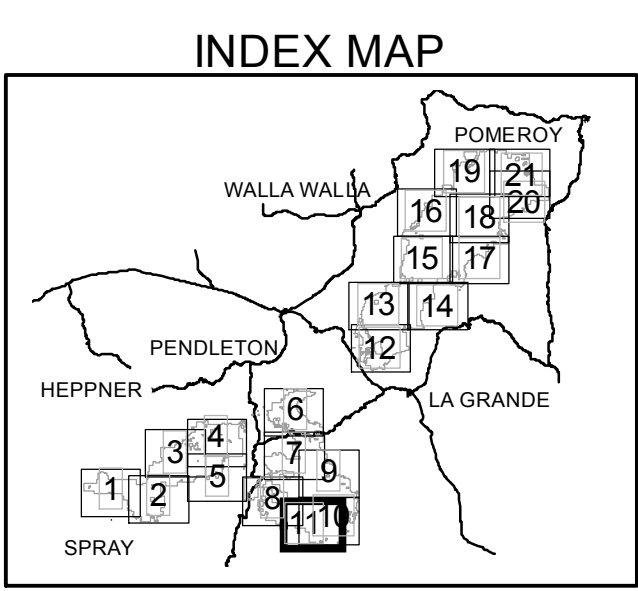
Designated roads, trails, and areas may also be subject to temporary, emergency closures, and visitors must comply with signs notifying them of such restrictions. A national forest may issue an order to close a road, trail, or area on a temporary basis to protect the life, health or safety of forest visitors or the natural or cultural resources in these areas. Such a temporary and/or emergency closures are consistent with the Travel Management Rule (36 CFR 212.52 (b)); 36 CFR 261 subpart B).

The designation "road or trail open to all motor vehicles" does not supersede vehicle size or weight limits imposed through State traffic law.

Route Number	Legend	Special Vehicle Designation	Dates Allowed
1000220	Roads open to all Vehicles, with Seasonal Designation	Seasonal Designation	05/01-11/30
1010175	Roads open to all Vehicles, with Seasonal Designation	Seasonal Designation	07/01-02/29
1000460, 1000520, 1010370, 1035060, 1035080, 1038060	Trails open to vehicles 50" or less in width, with Seasonal Designation	Seasonal Designation	07/01-02/29



Malheur NF  
For Information Contact  
Blue Mountain District  
431 Patterson Bridge Rd.  
John Day, OR  
541-575-3000



### Important Notice: Not all Road and Trail Symbols Exist on All Maps

- LEGEND**
- Roads Open to Highway Legal Vehicles Only
  - Roads Open to All Vehicles
  - Trails Open to All Vehicles
  - Trails Open to Motorcycles Only
  - Trails Open to Vehicles 50" or Less in Width
  - Special Vehicle Designation (See Table)
  - Seasonal Designation (See Table)
  - Interstate
  - Highways, US, State
  - Other Public Roads
  - Other Public Trails
  - Mile Marker Tick
  - FS Campgrounds
  - Motorized Trail Access
  - Forest or Unit Boundary
  - Wilderness Boundary
  - Lakes
  - Open To Cross Country Travel When There Is At Least 12 Inches of Snow

