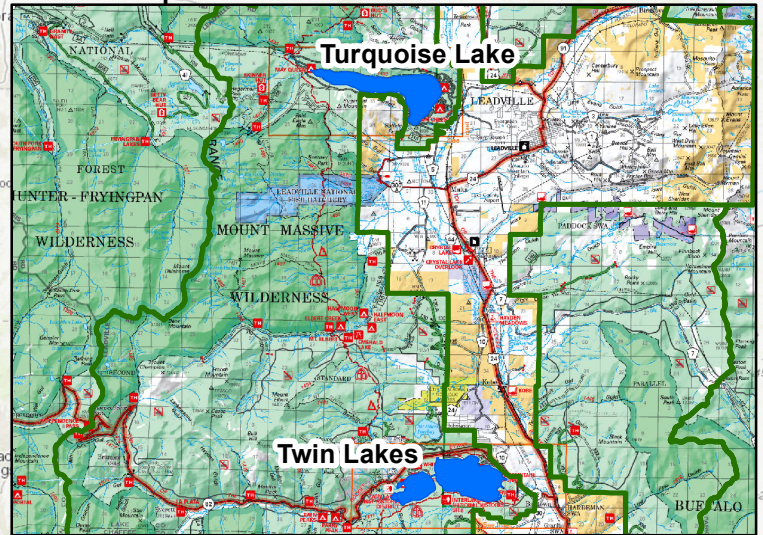


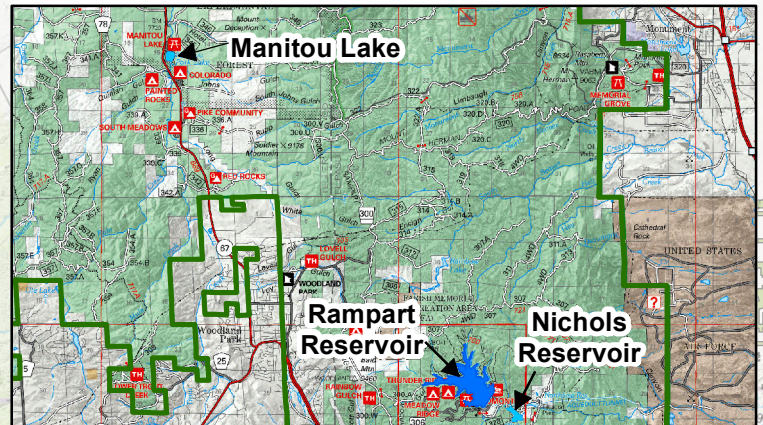
Inset 1: Turquoise Lake and Twin Lakes



Inset 2: Jefferson Lake



Inset 3: Manitou Lake, Rampart Reservoir, and Nichols Reservoir



Prohibitions:

1. Possessing or operating a motorboat on any waters within the Described Area. Motorboats Allowed: Jefferson Lake, Twin Lakes, Turquoise Lake, or Rampart Reservoir.
2. Operating any watercraft on Jefferson Lake in excess of posted no wake speed limit.
3. Going into or being upon Nichols Reservoir while possessing or operating a boat or raft of any kind.
4. Entering or being in Manitou Lake, except on a non-motorized boat or watercraft.
5. Entering or being in Rampart Reservoir, except on a boat or watercraft of any kind.

Pike and San Isabel National Forests
Order 02-12-00-23-09
Exhibit A
Occupancy and Use Prohibitions



Map Created: 4/4/2023



Map Disclaimer. This map is intended to depict physical features as they generally appear on the ground and may not be used to determine title, ownership, legal boundaries, legal jurisdiction, including jurisdiction over roads or trails, or access restrictions that may be in place on either public or private land. Obtain permission before entering private lands, and check with appropriate government offices for restrictions that may apply to public lands. Lands, roads and trails within the boundaries of the National Forest may be subject to restrictions on motor vehicle use. Obtain a Motor Vehicle Use Map, or inquire at the local Forest Service Office for motor vehicle access information. Natural hazards may or may not be depicted on the map, and land users should exercise due caution. This map may not be suitable for navigation. For more information, contact the Pike & San Isabel NF, Cimarron & Comanche NG, Pueblo, CO. (719) 553-1400.