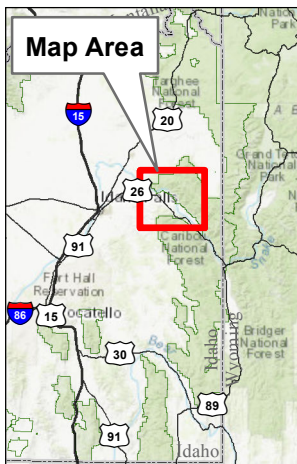
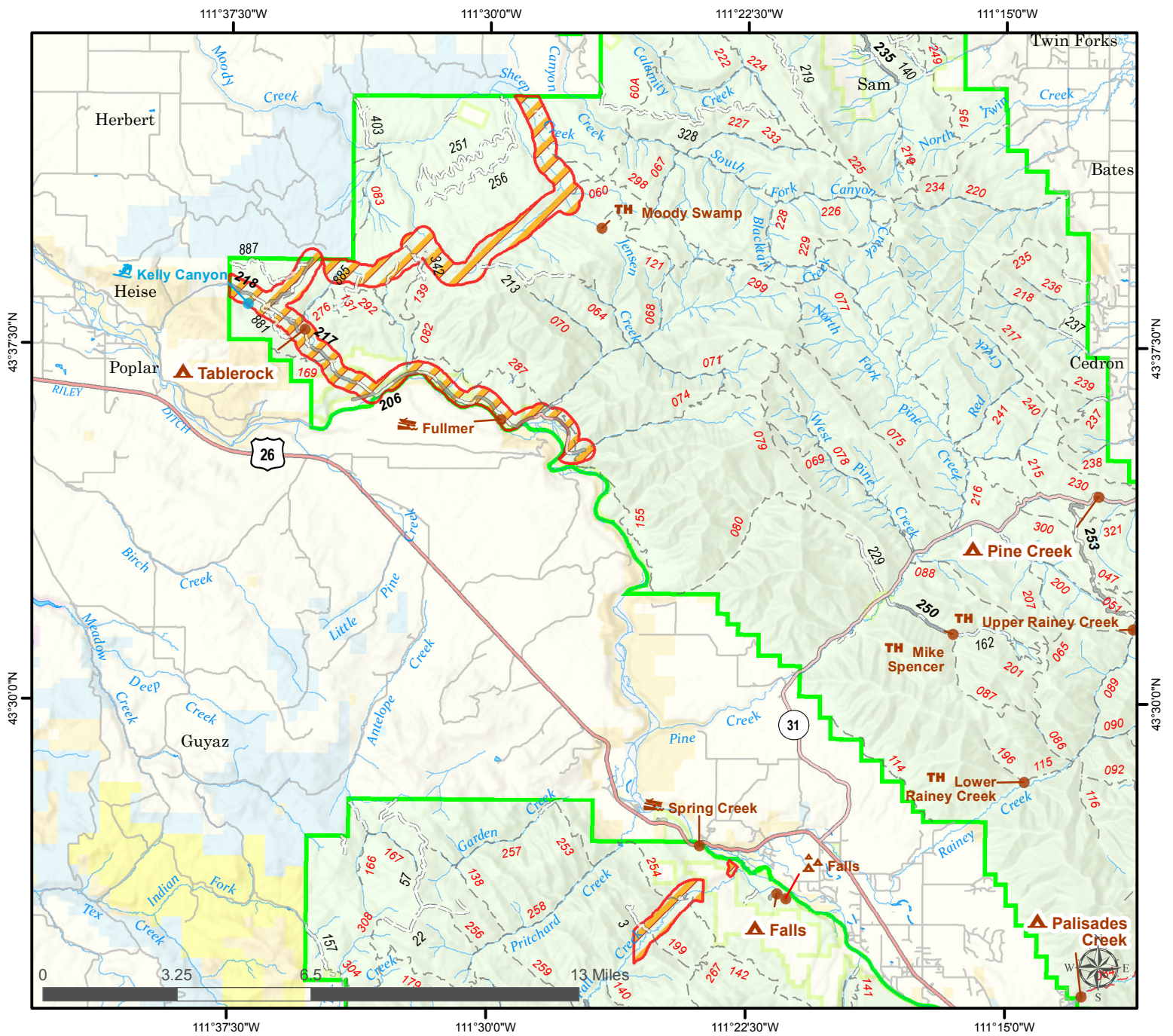




Caribou-Targhee National Forest
Five Day Stay Limit - Exhibit B
Order Number - 04-15-23-205



Legend

- | | | | |
|--|---------------------------|--|---------------------------|
| | Described Area | | Secondary Highway |
| | Military | | Primary Highway |
| | Bureau of Reclamation | | Paved Road |
| | Forest Service | | Gravel Road |
| | Bureau of Land Management | | Dirt (Not Paved) |
| | Private | | High Clearance |
| | State | | Trail |
| | Undetermined | | National Designated Trail |
| | | | Stream/River |

The USDA Forest Service makes no warranty, expressed or implied, including the warranties of merchantability and fitness for a particular purpose, nor assumes any legal liability or responsibility for the accuracy, reliability, completeness or utility of these geospatial data, or for the improper or incorrect use of these geospatial data. These geospatial data and related maps or graphics are not legal documents and are not intended to be used as such. The data and maps may not be used to determine title, ownership, legal descriptions or boundaries, legal jurisdiction, or restrictions that may be in place on either public or private land. Natural hazards may or may not be depicted on the data and maps, and users should exercise due caution. The data are dynamic and may change over time. The user is responsible to verify the limitations of the geospatial data and to use the data accordingly.

Prepared by: Caribou-Targhee National Forest
Idaho Falls, Idaho

Produced: 4/13/2022 By: cbeck01

Projection: UTM 12 N, NAD83

File: T:\FS\NFS\CaribouTarghee\Program\6800\InformationMgmt\GIS\ClosureOrders\ForestOrders_2022\StayLimitTetonPalisades\Closure04-15-22-211ExhibitB_2022.mxd