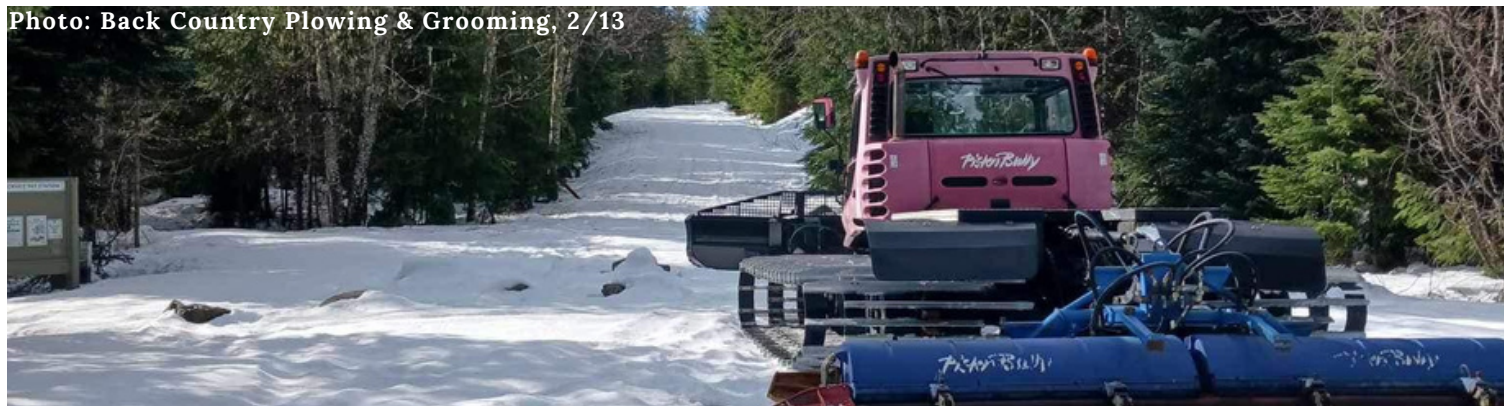


Gifford Pinchot National Forest

WINTER RECREATION REPORT

FEBRUARY 16, 2024

Photo: Back Country Plowing & Grooming, 2/13



DO YOU HAVE YOUR SNO-PARK PASS?



In order to park at a sno-park, you need to purchase a pass through **Washington State Parks**. Visit www.epermits.parks.wa.gov to grab a pass for your trip.

RECREATION REMINDER

Be prepared for snow & ice on Forest Roads on the way to Sno-Parks within the Forest. Forest roads are not maintained for winter travel except those leading to Sno-Park access. Only experienced drivers in vehicles with proper traction tires should travel on these roads. Make sure to carry winter gear essentials in your vehicle.

WINTER GEAR CHECKLIST

Always carry the following items in your vehicle when visiting the forest in winter:

- flashlight
- extra food
- shovel
- extra water
- map
- extra layers
- traction devices



CHECK WINTER CONDITIONS!

Winter weather and road conditions vary greatly with elevation, and change quickly. Check out these links:

- [Washington Weather Alerts](#)
- [Washington Road Conditions](#)
- [Avalanche Forecasts](#)
- [Gifford Pinchot Winter Recreation Information](#)
- [Mount St. Helen's Climbing Info](#)
- [Back Country Plowing & Grooming](#)



Mt. Adams Ranger District

Atkisson Sno-Park: Old Man Pass Sno-Park: Koshko & McClellan Meadows: Groomed 2/12. **Lone Butte Sno-Park:** Groomed 2/10. **Pineside Sno-Park:** No current information. **Flattop Sno-Park:** No current information. **Snow King Sno-Park:** No current information available. **Smith Butte Sno-Park:** Closed.

Cowlitz Valley Ranger District

Wakepish Sno-Park: Groomed 2/11. **Orr Creek Sno-Park:** Groomed 2/10. **Johnson Creek Sno-Park:** No current information available. **Skate Creek Sno-Park:** No current information available.

Mount St. Helens District & Monument

Marble Mtn. Sno-Park: Groomed 2/15; road may be slick at elevation; be prepared for winter driving conditions. **Climbing:** over the weekend: rain at lower elevation & snow expected Sat - Mon at higher elevation; avalanche risk = orange ("considerable") **Science & Learning Center Schedule:** Sat & Sun, 10am-4pm* (*Weather dependent; call ahead: 360-274-2131)