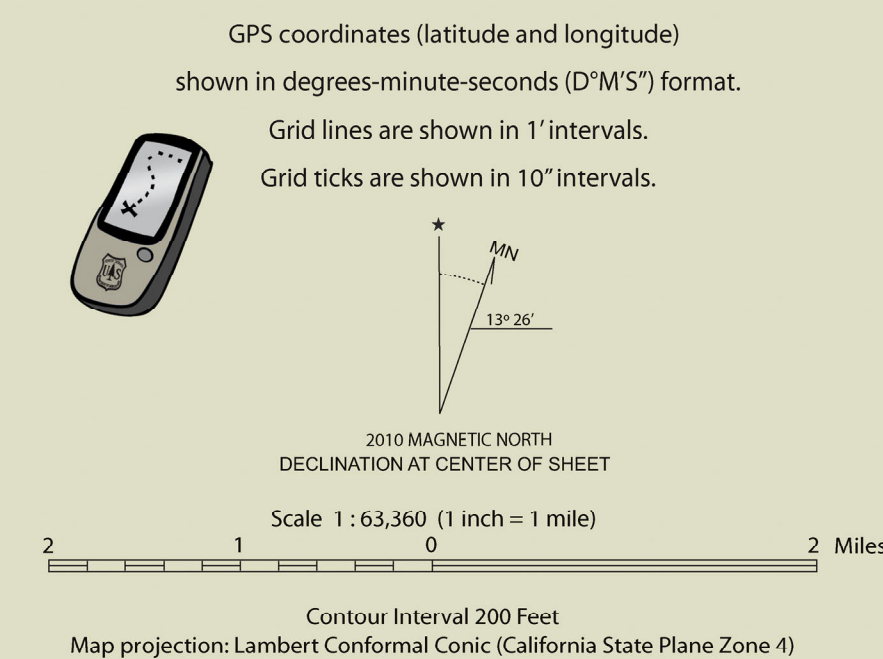


## Motor Vehicle Opportunities

### Hume Lake Ranger District

#### Sequoia National Forest Giant Sequoia National Monument

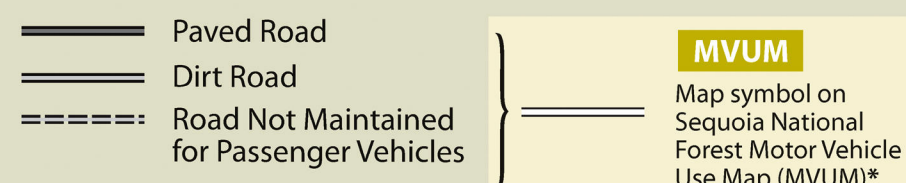


#### Travel Routes

##### Roads Open to HIGHWAY LEGAL VEHICLES ONLY

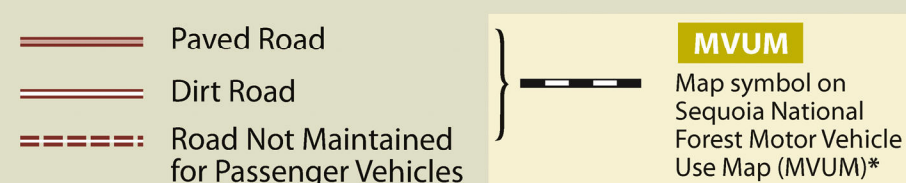
Within National Forests, these roads are open only to motor vehicles licensed under State law for general operation on all public roads within the State.

This map does not define regulations for roads and trails outside the National Forest boundary.



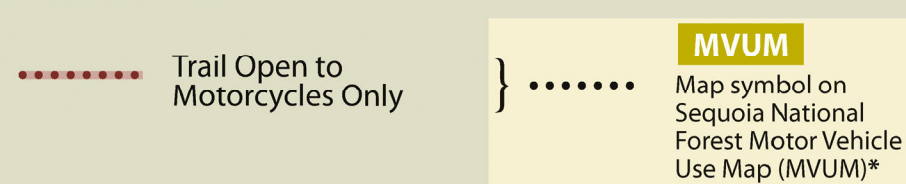
##### Forest Service ROADS OPEN TO ALL VEHICLES

These roads are open to all motor vehicles, including smaller off highway vehicles that may not be licensed for highway use (but not to oversize or overweight vehicles under State traffic law).



##### Forest Service TRAILS OPEN TO TRAIL VEHICLES

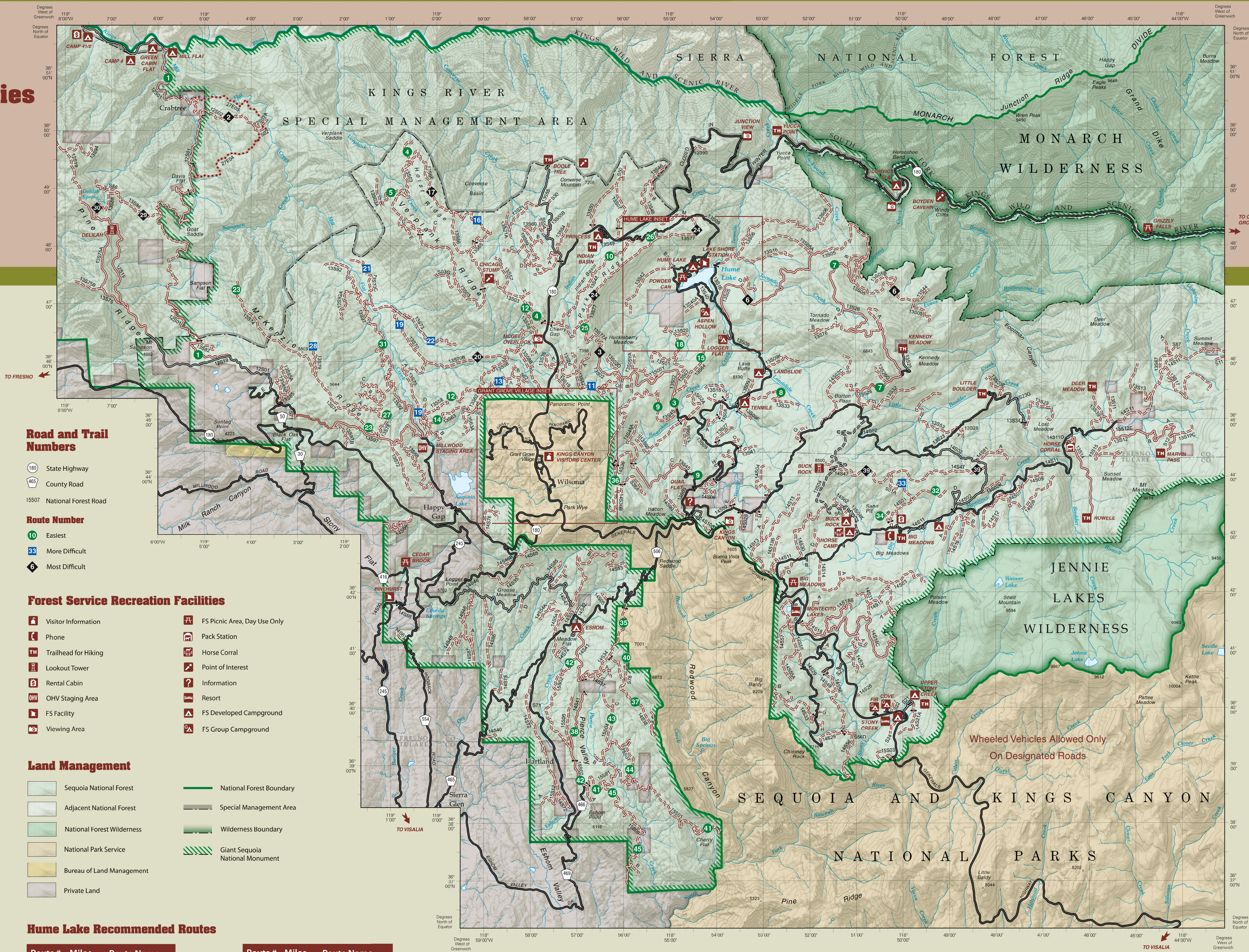
These trails are open to trail vehicles specified below in the legend (trail vehicles are defined as motorcycles, ATVs, and high-clearance 4WD vehicles)



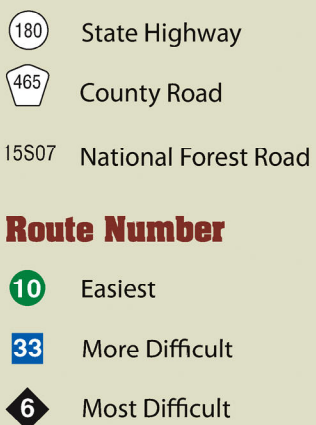
#### MVUM

##### \*USING THIS MAP WITH THE MOTOR VEHICLE USE MAP (MVUM)

This Motor Vehicle Opportunity Guide is designed to be used with the Motor Vehicle Use Map (MVUM) for the Sequoia National Forest. The MVUM is available at any Sequoia National Forest office. The MVUM shows the National Forest System roads, National Forest System trails, and the areas on National Forest System lands in the Sequoia National Forest that are designated for motor vehicle use pursuant to 36 CFR 212.51. National Forest road, trail, and area users must comply with the Motor Vehicle Use Map (MVUM), as well as Federal, State, and local laws and regulations. Compliance with these rules is the responsibility of the user.



#### Road and Trail Numbers



#### Forest Service Recreation Facilities



#### Land Management



#### Hume Lake Recommended Routes

Route #	Miles	Route Name
1	13.4	Davis Road
2	1.7	Rancheria
3	4.4	Huckleberry Road
4	7.9	Chicago Stump Road
5	1.4	Verplank Ridge
6	9.2	Camp 7
7	6.6	Tornado Meadow
8	1.8	Lava Butte
9	5.8	Big Whistle
10	3.2	Indian Basin
11	2.4	Powerline Road
12	6.1	Abbot Creek Road
13	1.8	Dorsey Meadow
14	1.7	Dorsey Meadow
15	1.6	Ridge Top
16	2.1	Holst Saddle
17	4.2	Shay Rail Road
18	1.6	North Goodmill
19	4.1	Goodmill
20	1.7	Shay Rail Road
21	1.4	North Goodmill
22	1.8	Sagebrush
23	4.7	McKenzie Ridge

Route #	Miles	Route Name
24	4.7	Park Ridge
25	0.4	Huckleberry Trail
26	0.3	Huckleberry Spur
27	2.4	McKenzie Cut-Off
28	0.7	McKenzie North
29	2.1	Clover Meadow Road
30	1.2	Delliah Spring
31	6.5	Millwood Loop
32	1.8	Cheater Trail
33	1.1	Cheater Trail
34	0.3	Sand Pit
35	2.3	Wortman Mill
36	1.7	Log Corral
37	2.6	Redwood Mountain
38	2.1	Pierce Valley
39	3.9	Buck Rock Jeep Trail
40	0.7	Redwood Ridge
41	5.7	Cherry Flat
42	2.6	Eshorn Road
43	2.0	Pierce Pond
44	1.7	Pierce Creek
45	3.4	Cherry Road

