



**Forest Order No. STF-16-2017-03
Stanislaus National Forest
Road and Area Closure**

Pursuant to 16 USC 551 and 36 CFR 261.50(a) and (b), and to provide for public safety, the following acts are prohibited within the Stanislaus National Forest. This Order is effective from April 25, 2017 through December 31, 2018.

1. Being on the National Forest System roads identified in Exhibit A and shown on Exhibits B through K. 36 CFR 261.54(e).
2. Going into or being upon the areas listed below and shown on Exhibits B through K.
 - a. Beardsley Day Use Area
 - b. Stanislaus River Campground
 - c. Union East Campground
 - d. Union West Campground
 - e. Sandy Flat Campground
 - f. Rocky Point Campground
 - g. Spicer Campground
 - h. Spicer Boat Ramp
 - i. Spicer Group Site

36 CFR 261.53(e).


Pursuant to 36 CFR 261.50(e), the following persons are exempt from this Order:

1. Persons with a permit from the Forest Service specifically authorizing the otherwise prohibited act or omission.
2. Any Federal, State, or local officer, or member of an organized rescue or fire fighting force in the performance of an official duty.

These prohibitions are in addition to the general prohibitions contained in 36 CFR Part 261, Subpart A.

A violation of these prohibitions is punishable by a fine of not more than \$5,000 for an individual or \$10,000 for an organization, or imprisonment for not more than six months, or both. 16 USC 551 and 18 USC 3559, 3571, and 3581.

Executed in Sonora, CA, this 24th day of April, 2017.



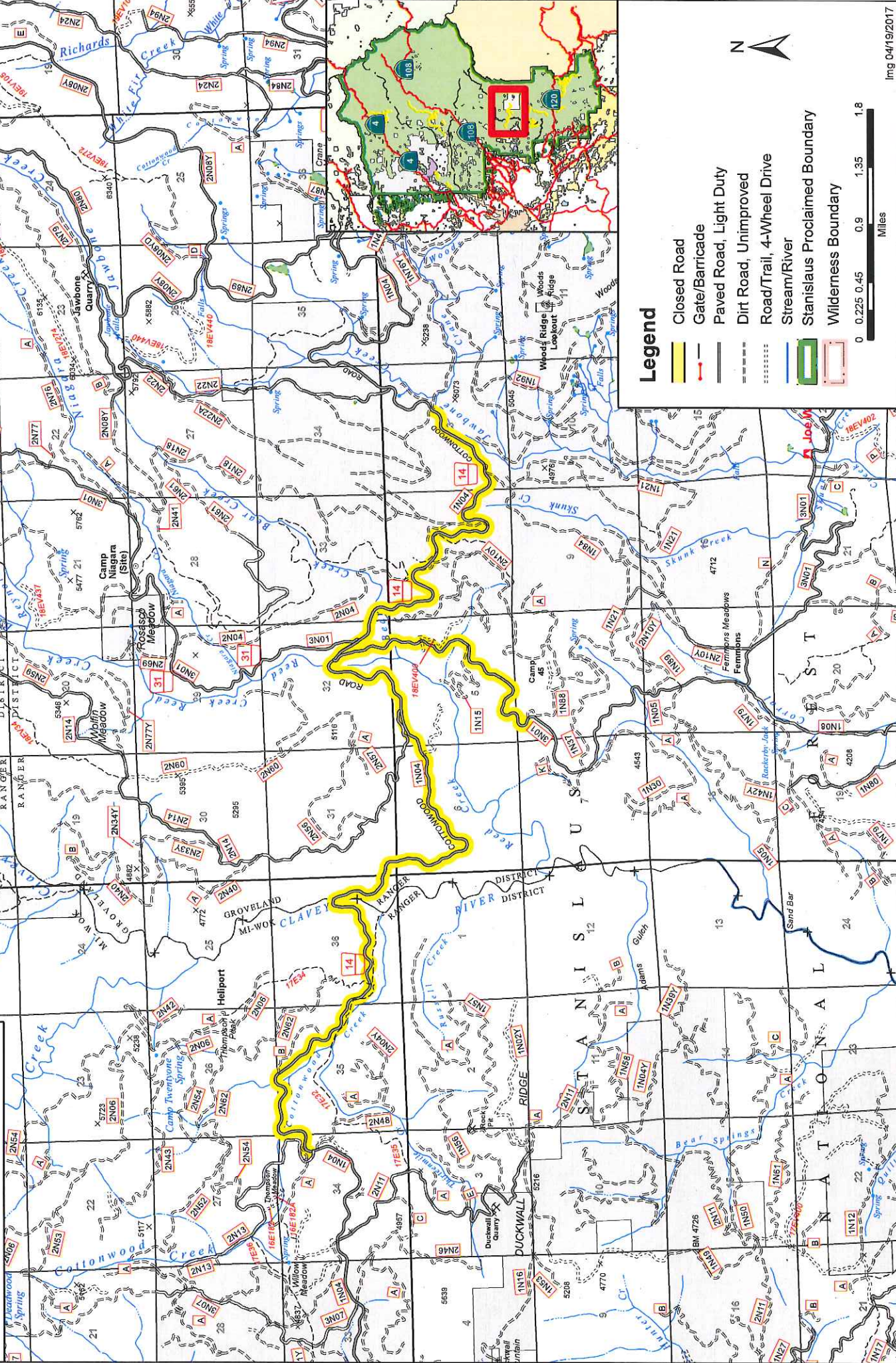
Scott Tangenberg
Acting Forest Supervisor
Stanislaus National Forest

Forest Order No. STF-16-2017-03
Stanislaus National Forest
Road and Area Closure
Exhibit A

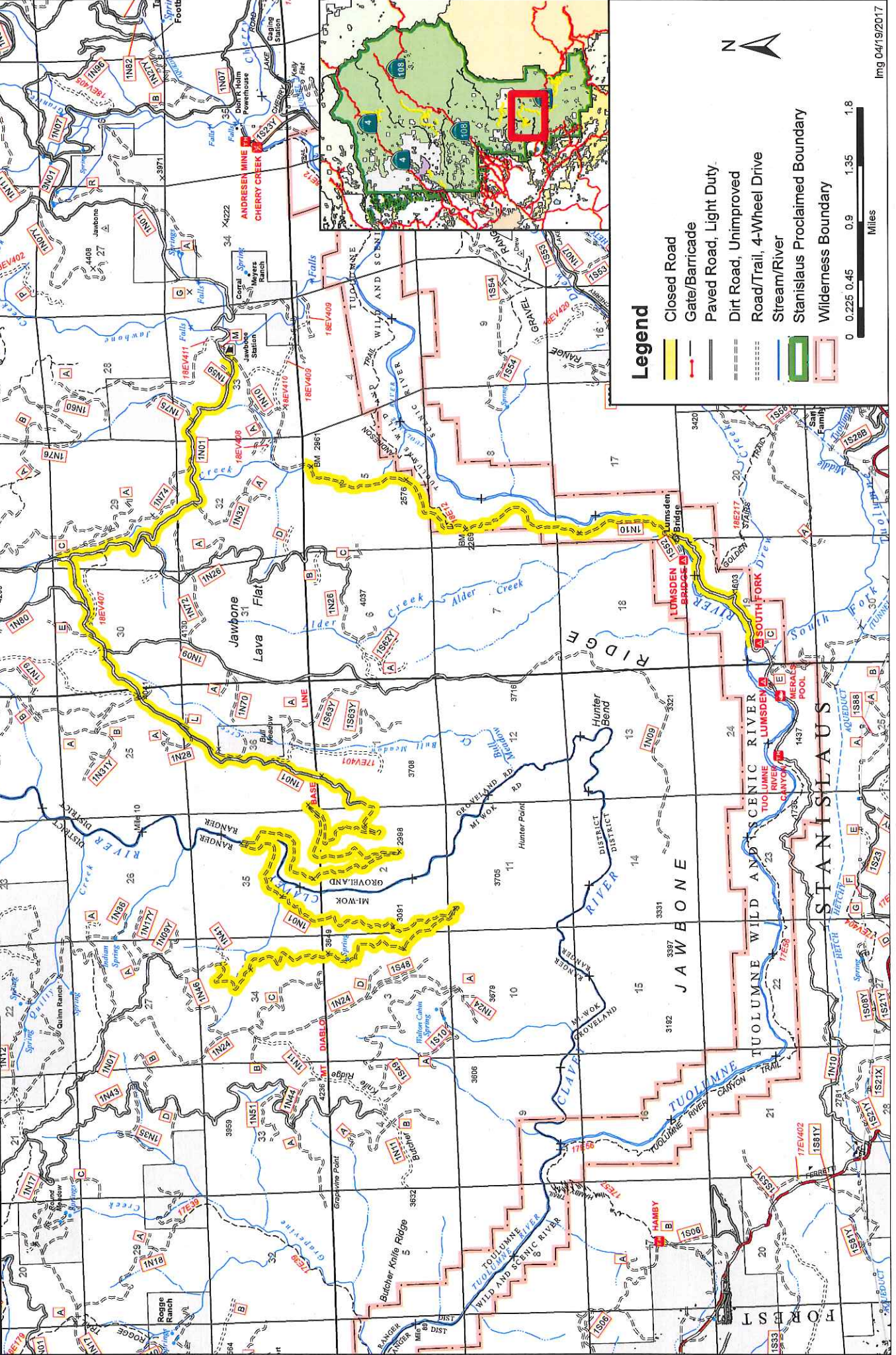
1. Forest Road No. 5N95, from its intersection with Forest Road No. 5N02 then continuing north to its intersection with Forest Road No. 5N29.
2. Forest Road No. 4N29, from its intersection with Forest Road No. 5N02 then continuing northeast to its termination at Beardsley Lake Day Use Area.
3. Forest Road No. 5N02, from its intersection with historic Forest Road No. 4N07 then continuing north to its intersection with the Forest Road No. 5N14.
4. Forest Road No. 5N09X, from its intersection with Forest Road No. 5N95 then continuing north to its termination at Donnell Dam.
5. Forest Road No. 7N01 (Spicer Road), from its intersection with State Highway 4 continuing to its terminus.
6. Forest Road No. 4N38 (McKays Road), from the gate at approximately MP 5.3 continuing to the gate at the Beaver Creek Reservoir Dam.
7. Forest Road No. 5N14, from the intersection with Forest Road No. 5N02 then continuing to its intersection with Forest Road No. 6N17.
8. Forest Road No. 7N17 (Slick Rock Road), from the forest boundary at the westerly end of Lake Alpine to the intersection with Forest Road No. 7N01 (Spicer Road).
9. Forest Road No. 4N80Y (Candy Rock Road), from the gate approximately 2.5 miles from Highway 4 then continuing to its terminus.
10. Forest Road No. 1N04 (Cottonwood Road), from its intersection with Forest Road No. 2N13 then continuing east to its intersection with Forest Road No. 1N76Y.
11. Forest Road No. 3N01, from its intersection with Forest Road No. 1N04 (Cottonwood Road) continuing south to its intersection with Forest Road No. 1N88.
12. Forest Road No. 1N01, from its intersection with Forest Road No. 1N41 continuing east to its intersection with Forest Road No. 1N69.
13. Forest Road No. 1N01, from its intersection with Forest Road 1N08 continuing south and then east to its intersection with Forest Road No. 1N10.
14. Forest Road No. 1N10 (Lumsden Road), from its intersection with Forest Road No. 1N01 continuing south to its intersection with the South Fork (Tuolumne River) Campground.
15. Forest Road No. 2S30 (Crocker Ridge), from its intersection with Hardin Flat Road continuing south to its termination point at the intersection of Forest Road No. 2S01 (Five Corners).

16. Forest Road No. 2S64, from its intersection with Forest Road No. 1S12 continuing south to its termination point at Forest Road No. 1S13.
17. Forest Road No. 1S13 (Packard Canyon), from its intersection with Forest Road No. 1S66 continuing east to its termination point at Forest Road No. 1S12.
18. Forest Road No. 2S02 (Bull Creek), from its intersection with Forest Road No. 2S74 continuing north to its termination point at Forest Road No. 2S01 (Five Corners).
19. Forest Road No. 2S01 (Old Yosemite Coulterville), from its intersection with Forest Road No. 2S66 continuing east to Forest Road No. 1S12 (Five Corners).
20. Forest Road No. 1S14, from Deer Lick Creek continuing north to Forest Road No 2S62.

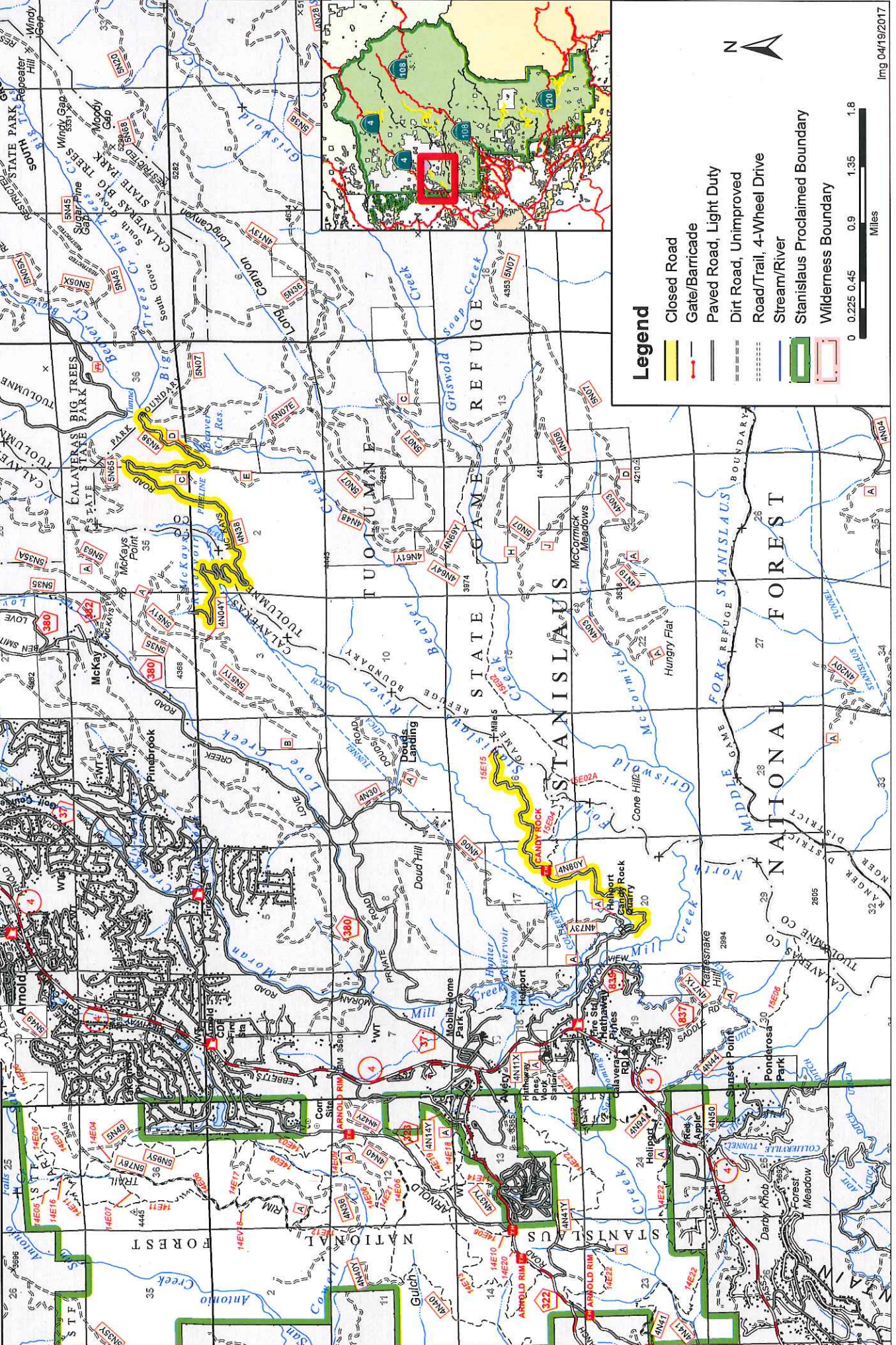
Forest Order STF 16-2017-03
 Stanislaus National Forest
 Mi-Wok/Groveland Ranger District
 Area and Road Closure
 Exhibit B



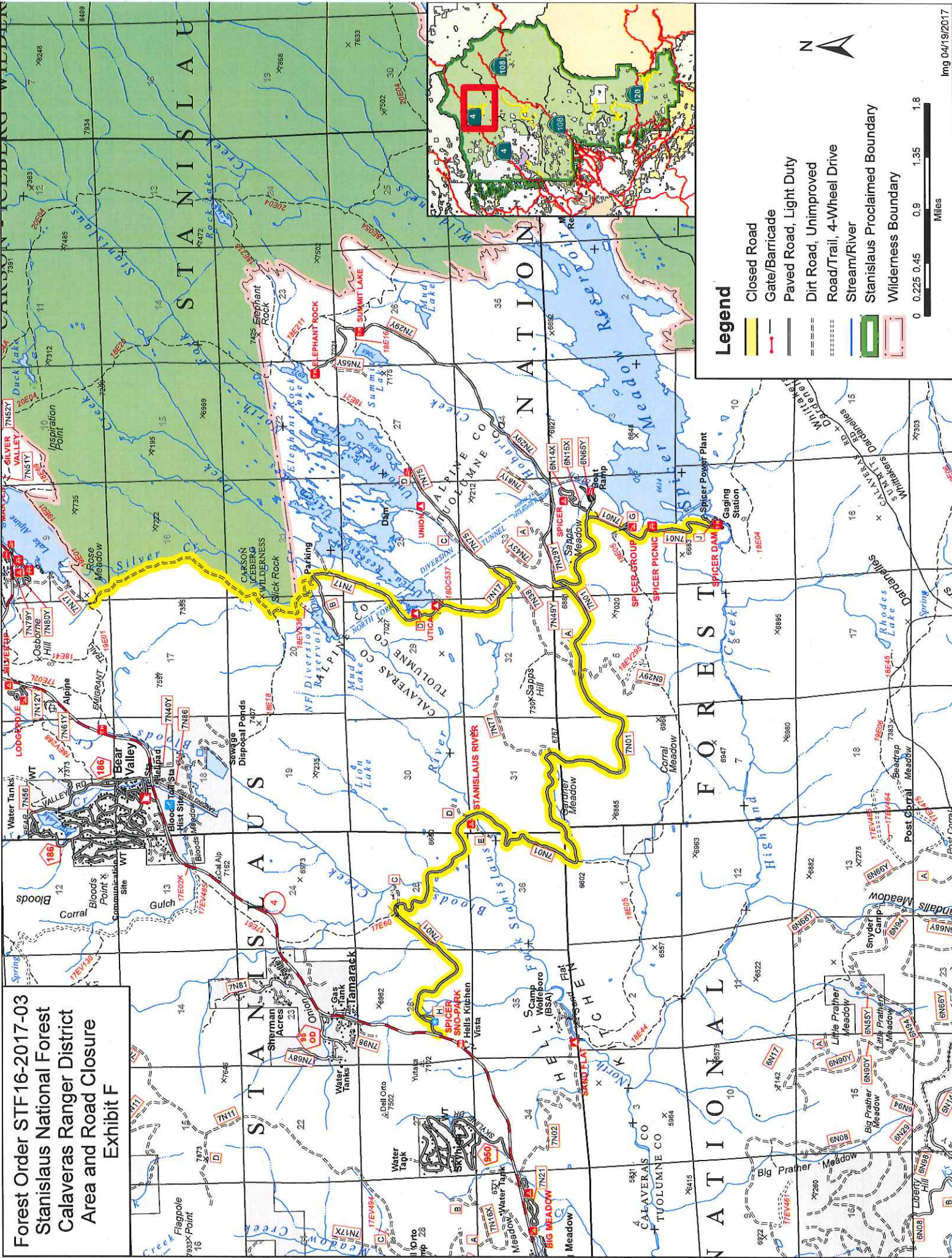
Forest Order STF16-2017-03
Stanislaus National Forest
Mi-Wok/Groveland Ranger District
Area and Road Closure
Exhibit C



**Forest Order STF 16-2017-03
Stanislaus National Forest
Calaveras Ranger District
Area and Road Closure
Exhibit D**

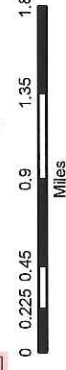


Forest Order STF 16-2017-03
Stanislaus National Forest
Calaveras Ranger District
Area and Road Closure
Exhibit F

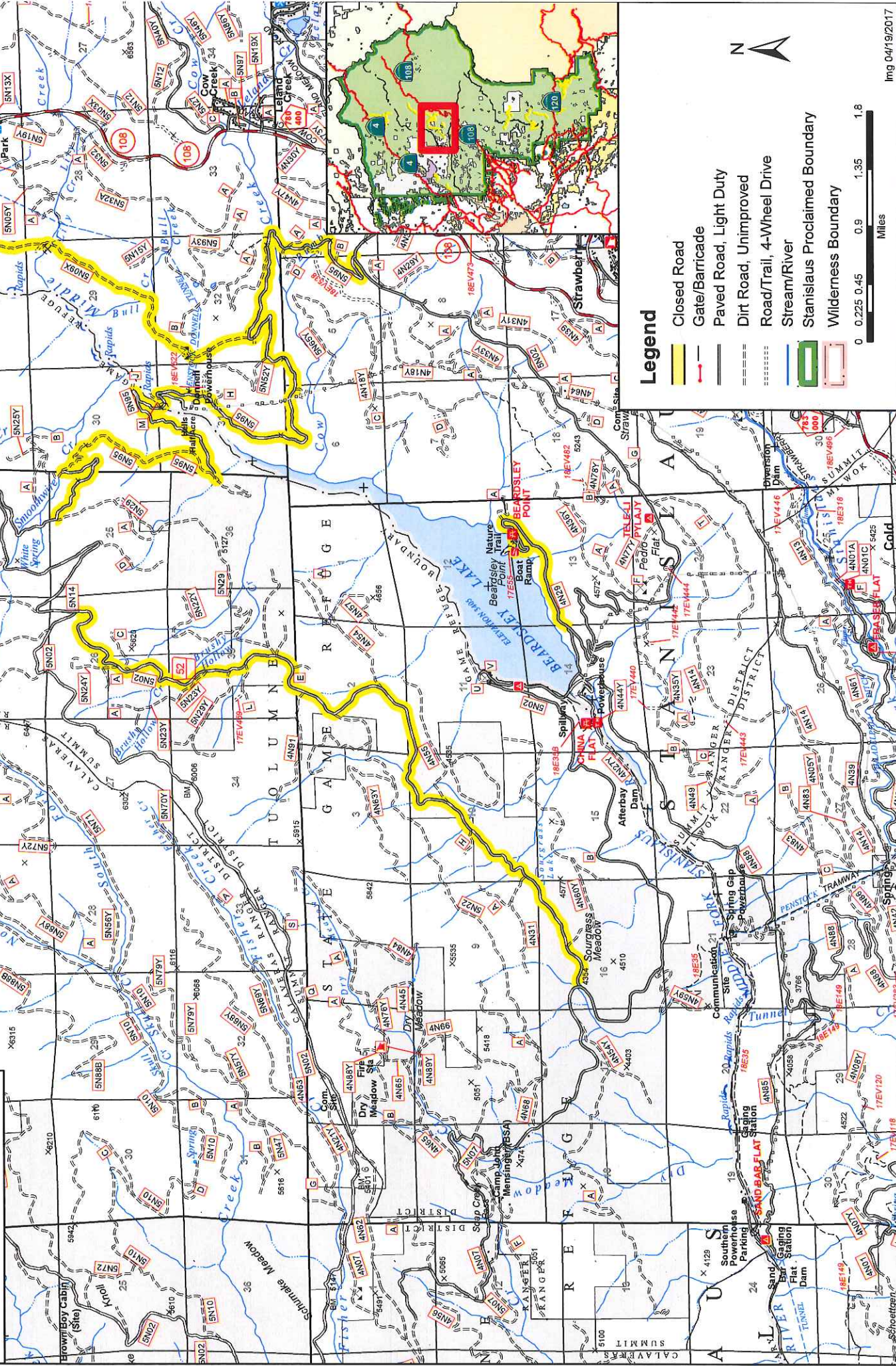


Legend

- Closed Road
- Gate/Barricade
- Paved Road, Light Duty
- Dirt Road, Unimproved
- Road/Trail, 4-Wheel Drive
- Stream/River
- Stanislaus Proclaimed Boundary
- Wilderness Boundary



**Forest Order STF16-2017-03
Stanislaus National Forest
Summit Ranger District
Area and Road Closure
Exhibit G**

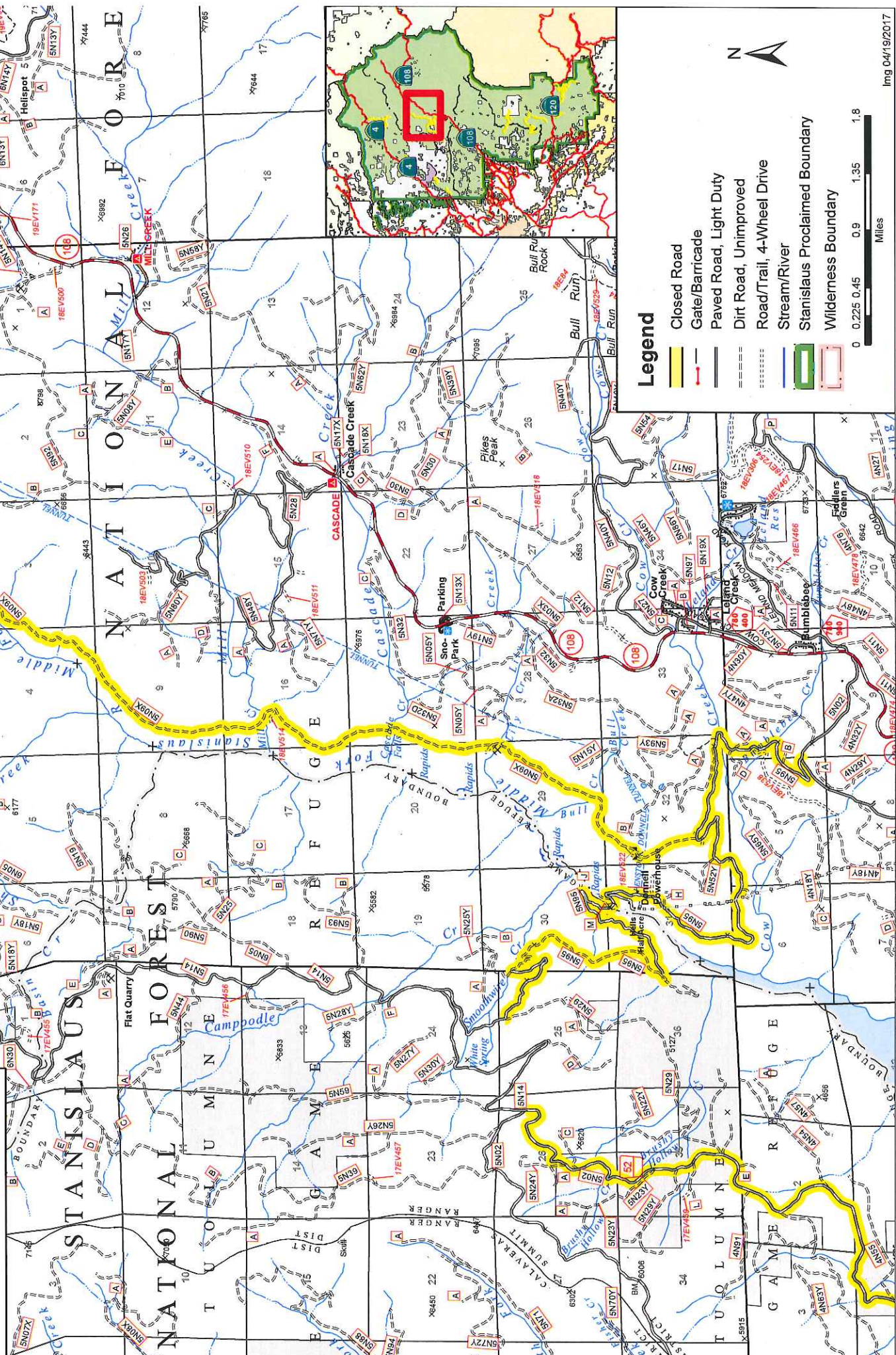


Legend

-  Closed Road
-  Gate/Barricade
-  Paved Road, Light Duty
-  Dirt Road, Unimproved
-  Road/Trail, 4-Wheel Drive
-  Stream/River
-  Stanislaus Proclaimed Boundary
-  Wilderness Boundary



**Forest Order STF16-2017-03
Stanislaus National Forest
Summit Ranger District
Area and Road Closure
Exhibit H**

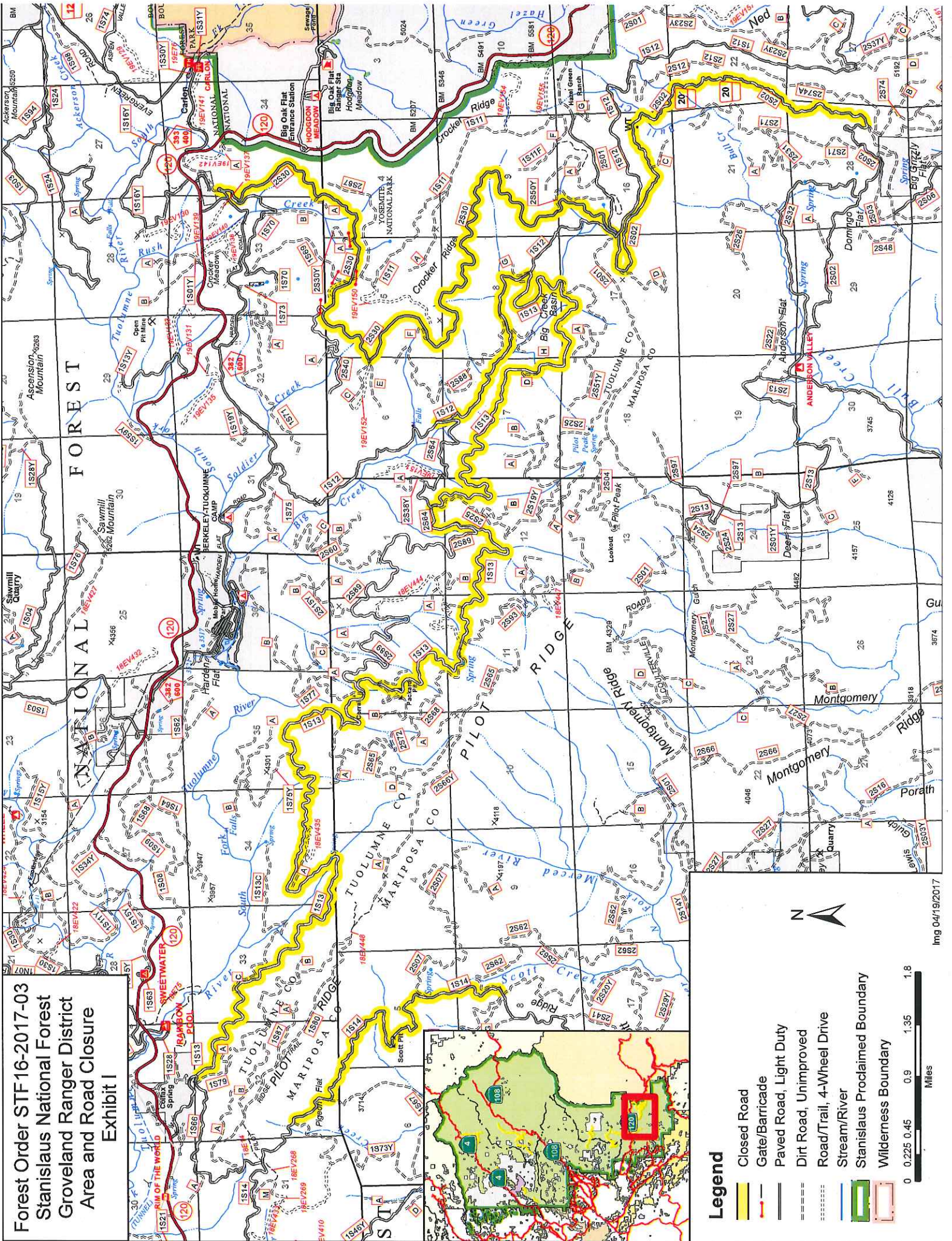


Legend

-  Closed Road
-  Gate/Barricade
-  Paved Road, Light Duty
-  Dirt Road, Unimproved
-  Road/Trail, 4-Wheel Drive
-  Stream/River
-  Stanislaus Proclaimed Boundary
-  Wilderness Boundary

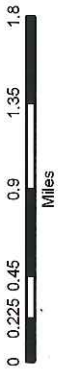


**Forest Order STF 16-2017-03
Stanislaus National Forest
Groveland Ranger District
Area and Road Closure
Exhibit I**

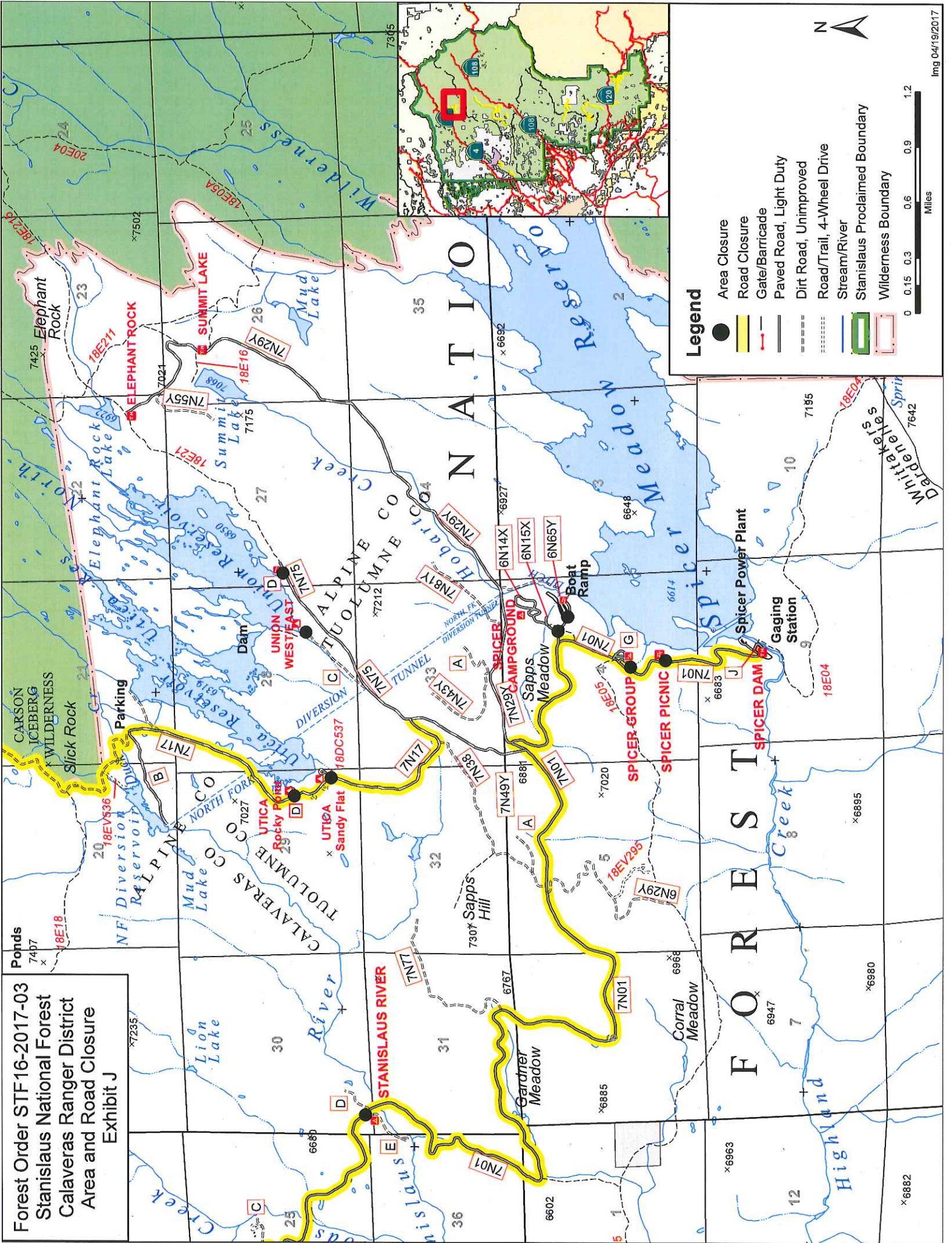


Legend

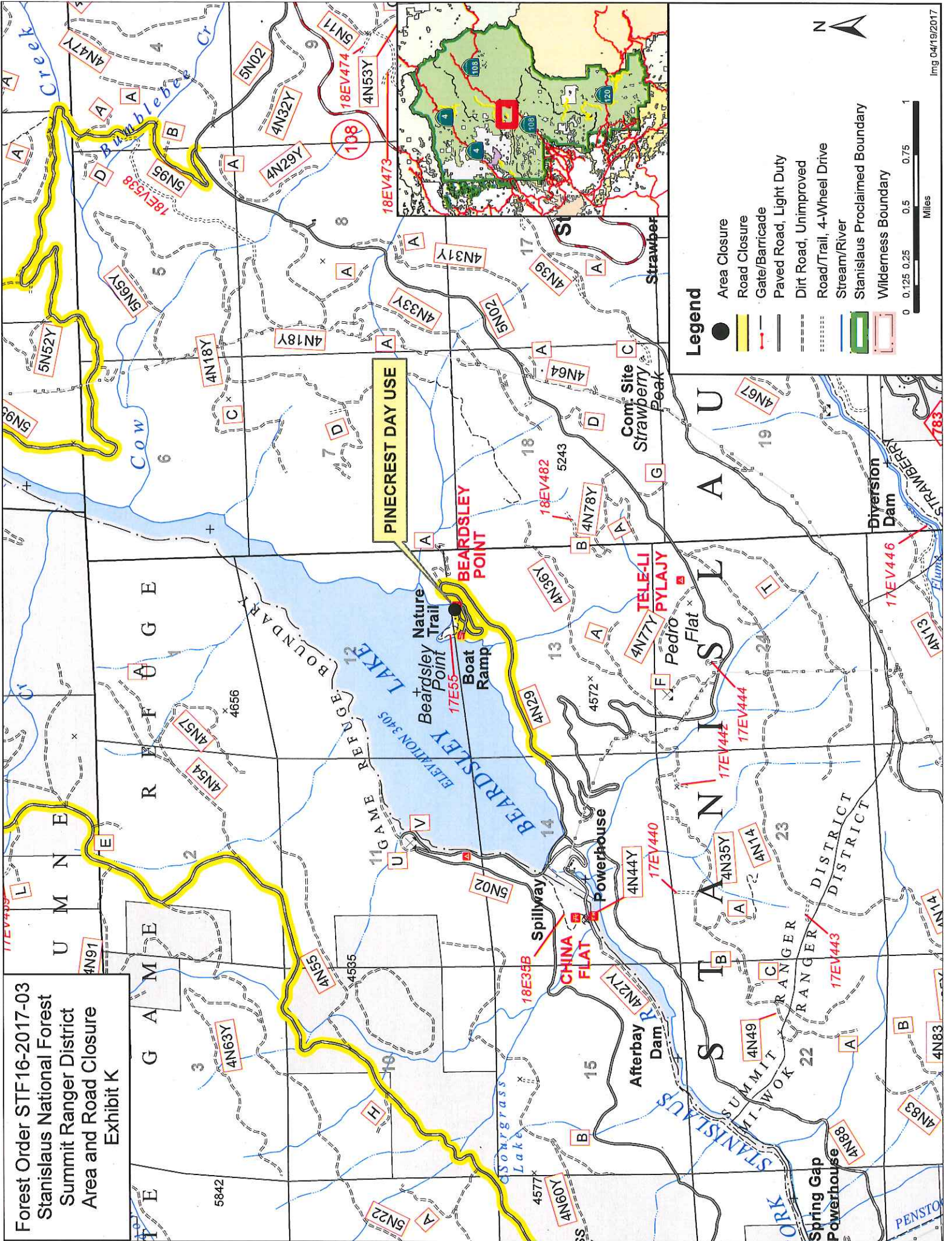
- Closed Road
- Gate/Barricade
- Paved Road, Light Duty
- - - Dirt Road, Unimproved
- Road/Trail, 4-Wheel Drive
- Stream/River
- Stanislaus Proclaimed Boundary
- Wilderness Boundary



Forest Order STF16-2017-03
Stanislaus National Forest
Calaveras Ranger District
Area and Road Closure
Exhibit J



Forest Order STF16-2017-03
Stanislaus National Forest
Summit Ranger District
Area and Road Closure
Exhibit K



Legend

- Area Closure
- ▭ Road Closure
- Gate/Barricade
- Paved Road, Light Duty
- Dirt Road, Unimproved
- Road/Trail, 4-Wheel Drive
- Stream/River
- ▭ Stanislaus Proclaimed Boundary
- ▭ Wilderness Boundary





United States
Department of
Agriculture

Forest
Service

Stanislaus National Forest

19777 Greenley Road
Sonora, CA 95370
(209) 532-3671
FAX: (209) 533-1890
TTY/TDD: (209) 533-0765
<http://www.fs.usda.gov/stanislaus>

File Code: 1010
Route To: (1950)

Date: April 24, 2017

Subject: Forest Order No. STF-16-2017-03, Road and Area Closure

To: Project Files

From: Scott Tangenberg, Acting Forest Supervisor

In January and February 2017 areas of the Stanislaus National Forest received heavy rain, snow, and winds that resulted in significant road damage and fallen trees. Observations of road and area conditions clearly indicate there are roads and areas that must be closed to protect the public and government infrastructure.

Dangers to the public justifying these closures include unstable soils, and ground and road surfaces exhibiting cracking and sloughing that has created gaps, drops, and crevices. In many places road surfaces have washed away. Areas of road pavement and hillsides could subside or slide without warning. Agency employees and partner agencies are unable to access areas and provide for proper facility maintenance and safety. Unsafe conditions will continue preventing them from mitigating existing hazards. I anticipate these dangerous conditions will exist through December 31, 2018 or until crews successfully mitigate the risks.

As a result, I have decided to close the following roads, portions of roads, or areas:

1. Being on National Forest System Road No. 5N95, from its intersection with Forest Road No. 5N02 then continuing north to its intersection with National Forest System Road No. 5N29. 36 CFR 261.54(e).
2. Being on National Forest System Road No. 4N29, from its intersection with Forest Road No. 5N02 then continuing northeast to its termination at Beardsley Lake Day Use Area. 36 CFR 261.54(e).
3. Being on National Forest System Road No. 5N02, from its intersection with historic Forest Road No. 4N07 then continuing north to its intersection with the National Forest System Road 5N14. 36 CFR 261.54(e).
4. Being on National Forest System Road No. 5N09X, from its intersection with Forest Road No. 5N95 then continuing north to its termination at Donnell Dam. 36 CFR 261.54(e).
5. Being on National Forest System Road No. 7N01 (Spicer Road), from its intersection with State Highway 4 continuing to its terminus. 36 CFR 261.54(e).
6. Being on National Forest System Road No. 4N38 (McKays Road), from the gate at approximately MP 5.3 continuing to the gate at the Beaver Creek Reservoir Dam. 36 CFR 261.54(e).



7. Being on National Forest System Road No. 5N14, from the intersection with FS Road 5N02 then continuing to the intersection with FS Road 6N17. 36 CFR 261.54(e).
8. Being on National Forest System Road No. 7N17 (Slick Rock Road), from FS Boundary /Private Property Line at the westerly end of Lake Alpine to the intersection with FS Road 7N01 (Spicer Road). 36 CFR 261.54(e).
9. Being on National Forest System Road No. 4N80Y (Candy Rock Road), from the gate approximately 2.5 miles from highway 4 then continuing to its terminus. 36 CFR 261.54(e).
10. Being on National Forest System Road No. 1N04 (Cottonwood Road), from its intersection with Forest Road No. 2N13 then continuing east to its intersection with Forest Road No. 1N76Y. 36 CFR 261.54(e).
11. Being on National Forest System Road No. 3N01, from its intersection with Forest Road No. 1N04 (Cottonwood Road) continuing south to its intersection with Forest Road No. 1N88. 36 CFR 261.54(e).
12. Being on National Forest System Road No. 1N01 from its intersection with Forest Road No. 1N41 continuing east to its intersection with Forest road 1N69. 36 CFR 261.54(e).
13. Being on National Forest System Road No. 1N01 from its intersection with Forest road 1N08 continuing south and then east to its intersection with Forest Road 1N10. 36 CFR 261.54(e).
14. Being on National Forest System Road No. 1N10, (Lumsden Road) from its intersection with Forest Road No. 1N01 continuing south to the intersection of the South Fork, (Tuolumne River) Campground. 36 CFR 261.54(e).
15. Being on National Forest System Road No. 2S30, (Crooker Ridge) from its intersection with Hardin Flat Road continuing south to its termination point at the intersection of Forest Road No. 2S01 (Five Corners). 36 CFR 261.54(e).
16. Being on National Forest System Road No. 2S64 from its intersection with Forest Road No. 1S12 continuing south to its termination point at Forest Road No. 1S13. 36 CFR 261.54(e).
17. Being on National Forest System Road No. 1S13 (Packard Canyon) from its intersection with Forest Road No. 1S66 continuing east to it termination point at Forest Road No. 1S12. 36 CFR 261.54(e).
18. Being on National Forest System Road No. 2S02 (Bull Creek) from its intersection with Forest Road No. 2S74 continuing north to its termination point at Forest Road No. 2S01 (Five Corners). 36 CFR 261.54(e).
19. Being on National Forest System Road No. 2S01 (Old Yosemite Coulterville) from its intersection with Forest Road No. 2S66 continuing east to Forest Road No. 1S12 (Five Corners). 36 CFR 261.54(e).

20. Being on National Forest Road No. 1S14 from Deer Lick Creek continuing north to Forest Road No 2S62. 36 CFR 261.54(e).
21. Being in the Beardsley Day Use Area, Stanislaus River Campground, Union East Campground, Union West Campground, Sandy Flat Campground, Rocky Point Campground, and Spicer Campground and Boat Ramp, and Spicer Group Site. 36 CFR 261.53(e & f).

Scoping with partners such as Sierra Pacific Industries, City of San Francisco Hetch-Hetchy managers, PG&E, and emergency response agencies found no significant objections to the necessity of closing roads and areas due to public risk. I have determined that anticipated effects of this proposed action would be administrative in nature. Ground disturbance will be limited to only that which is necessary to successfully and safely make repairs.

This order will be in effect from April 25, 2017, until December 31, 2018, or until repairs are completed. The Forest Service will install signs and post notices to alert the public to these prohibitions.

I have concluded through internal scoping that this decision may be categorically excluded from documentation in an Environmental Impact Statement (EIS) or Environmental Assessment (EA) under the National Environmental Policy Act. This action falls within the category identified in 36 CFR 220.6(d)(1) – prohibitions to provide short-term resource protection or to protect public health and safety – and does not require documentation in a decision memo, decision notice, or record of decision. I have determined that there are no extraordinary circumstances associated with this temporary closure. Implementation of the decision may begin immediately.



SCOTT TANGENBERG
Acting Forest Supervisor
Stanislaus National Forest