



United States Department of Agriculture

valuing you AN R6 UPDATE

August 2016



who's on THE MOVE

- **Quinlan Anderson,**
Assistant Crew Foreman for
the McKenzie River RD on
the Willamette NF to Crew
Supervisor for the McKenzie
River RD on the Willamette NF

what's INSIDE

History Comes to Life.... 3
Mt. Hood Helping Hands. 5
Wilderness Standards.... 6
This Isn't the Old Days... 8

getting together for FIN, FIRE AND FEATHER

By: **Patrick Lair**, Public Affairs Officer,
Ochoco NF and Crooked River National Grasslands

The Ochoco NF and Crooked River National Grassland hosted its annual "Fin, Fire and Feather" conservation education day event in Prineville, Oregon this past May, and more than 800 people spent the day having fun outside while learning about the natural world that surrounds them.

Held annually in Prineville for more than 20 years, the event is a combination of three previous FS outreach programs: Fish Fest, Migratory Bird Day and Wildcat Day. This year's event was held downtown at the Ochoco Creek Park and offered 28 different learning stations for kids in the first, second and third grades. Activity stations included bug, bird and tree identification, what to do if you get lost in the woods, Native American legends about the salmon, a "bat buffet", "liken' lichens", and even a snake station. *(continued)*



for the greatest good

who's on THE MOVE

- **JR Ashcraft**, Transportation Planner/Road Manager for the Crescent RD on the Deschutes NF to Forest Transportaion/Road Manager for the Deschutes NF
- **Seth Avery**, Apprentice Firefighter for the Gold Beach RD on the Rogue River-Siskiyou NF to Squad Boss for the Santiam River Zone on the Willamette NF
- **Sarah Barnett**, IT Specialist for R6\Deschutes NF to Webmaster Specialist for the CIO
- **Susan Beall**, Realty Specialist for the Willamette NF to Central and Western Oregon Lands Zone Lead for R6)
- **Nick Beddow**, Fire Crew Supervisor for the Middle Fork RD on the Willamette NF to Fire Crew Boss for the Middle Fork RD on the Willamette NF
- **Brett Blundon**, Aquatic Program Lead for the BLM (Eugene, OR) to Forest Aquatic Program for the Willamette NF
- **Steffan Bolin**, Road Manager for the Middle Fork RD on the Willamette NF to Transportation Planner for the Middle Fork RD on the Willamette NF
- **Jamie Canon**, Vegetation Management\Fuels Technician for the Entiat RD on the Okanogan-Wenatchee NF to Geospatial Systems Specialist for CSA5 in Entiat, WA

fin, fire and feather PARTNERSHIP A SUCCESS

(continued from previous page)

The kids had a blast and it was truly a community effort. Stations were staffed by many local partners such as the Crook County Search and Rescue, the Crooked River Weed Management Area, Heart of Oregon Corps, Oregon Department of Fish and Wildlife, Oregon State Parks and Recreation, U.S. Fish & Wildlife and the BLM.



From its inception "Fin, Fire and Feather" has reached thousands of local school kids and has drawn the interest of schools outside of the area. In addition to participation from Crook County schools in Prineville, Paulina and Powell Butte children from Wheeler County were also able to attend this year's event which pushed attendance to an all-time high of more than 800 people.



history comes to life ON THE WALLOWA-WHITMAN

By: **Matt Burks**, Public Affairs Specialist, Wallowa-Whitman NF

History came to life for students at the Oregon Trail Interpretive Park near La Grande, Oregon this May, and it's all thanks to the Every Kid in a Park Program. With a grant in hand from the National Park Foundation, twenty anthropology students from Eastern Oregon University teamed up with the Wallowa-Whitman NF for a historical re-enactment workshop and the sixty 4th graders from Greenwood Elementary School that were able to attend made memories that will last a lifetime.

The day began with an interpretive walk along the Oregon Trail where students encountered historical figures from the past such as Lewis and Clark, John Henry, Marcus and Narcissa Whitman and Joe Meeks; all meticulously portrayed by Eastern Oregon University students and an employee of the National Historic Oregon Trail Interpretation Center. After lunch the fun continued as students were treated to several educational stations including flint knapping, an encounter with a real, live Mountain Man and an Oregon Trail history game. *(continued)*



Pioneer Mountain Man



Wallowa-Whitman NF employees Chuck Oliver and Dan Ermovick in character.

who's on THE MOVE

- **Ryan Cole**, Geologist for the Coronado NF (R3-NM) to Engineering Geologist for the R6 Sub-Regional Engineering Organization (Springfield, OR)
- **Dana Croll**, Resource Specialist for the Umpqua NF to Regional TIM Coordinator for R6\Umpqua NF
- **Tim Davis**, District Ranger for the Devil's Garden RD & Waner RD on the Modoc NF to Natural Resources and Planning Staff Officer for the Olympic NF
- **Jonah Gladney**, Rappeller for the Wild Rivers RD on the Rogue River-Siskiyou NF to Crew Supervisor for the Detroit RD on the Willamette NF
- **Mathew Hackett**, Facilities Engineer for the R6 Sub-Regional Org (North Zone Willamette) to Zone Engineer for the R6 Sub-Regional Org (Mt. Hood Zone)
- **Fred Levitan**, Forest Geologist for the Six Rivers NF (R5-CA) to Engineering Geologist for the R6 Sub-Regional Engineering Organization (Springfield, OR)
- **Aaron Macomber**, Facilities Manager for the North Zone on the Deschutes NF to Mechanic for the Deschutes NF
- **Beverly McCarroll**, Wildlife Technician (temp) for the Detroit RD on the Willamette NF to Wildlife Technician for the Detroit RD on the Willamette NF

who's on THE MOVE

- **Jose Mercado**, Assistant Fire Management Officer for the Middle Fork RD on the Willamette NF to Fire Management Officer for the Middle Fork RD on the Willamette NF
- **Lizandra Nieves-Rivera**, Soil Scientist for the Stanislaus NF (R5-CA) to Soil Scientist for the Sweet Home RD on the Willamette NF
- **Jon Price**, Facilities Engineer for the R6 Sub-Regional Org (North Zone Willamette) to Zone Engineer for the R6 Sub-Regional Org (North Zone Willamette)
- **Kathryn (Kitti) Price**, Information Receptionist for the McKenzie River RD on the Willamette NF to Administrative Assistant for the McKenzie River RD on the Willamette NF
- **Ryan Siebold**, Silviculturist for the Laurentian RD on the Superior NF to Silviculturist for the Middle Fork RD on the Willamette NF
- **Andrew Stratton**, Geospatial Information Technology Instructor for the Southwestern Indian Polytechnic Institute to Geospatial Systems Specialist for CSA2 in Springfield, OR
- **Starr Sullivan**, Civil Engineering Technician for the R6 Sub-Regional Org\Willamette NF to Transportation Planner\Road Manager for the Crescent RD on the Deschutes NF

getting every kid in a park ON THE WALLOWA-WHITMAN NF

(continued from previous page)

“It was amazing to see all of the Eastern Oregon University students in period costumes!” exclaimed **Chuck Oliver**, Deputy Forest Supervisor for the Wallowa-Whitman NF. “You could really see that the elementary school students were caught up in the moment at having a chance to relive the past,” he said.

To help prepare for the big event students were visited in the classroom by **Erik Harvey**, Archeologist for the Wallowa-Whitman NF. Harvey delighted the class speaking about topics such as the Pioneer Spirit and the timeline of the Westward Movement from 1840-1890, and combined with the day’s events the 4th graders of Greenwood Elementary School learned a lot and had blast doing it on the day they visited their public lands.



Eastern Oregon University student handing letters out to the 4th Graders

Every Kid in a Park and the National Park Foundation:

The Oregon Trail Interpretive Park was 1 of 186 federal sites selected to receive a 2015 field trip grant from the National Park Foundation, the official charity of America’s National Parks. This grant, part of the Foundation’s [Open Outdoors for Kids Program](#), supports the White House youth initiative [Every Kid in a Park](#).

National Park Foundation grants have made it possible for more than 400,000 students to visit National Parks and other public lands and waters.

For the full list of grantees and their projects visit www.nationalparks.org/everykidinapark

big hearts and helping hands FOR INAUGURAL DAY OF SERVICE

By: **Raven Reese**, Public Affairs Intern, Mt. Hood NF

The Mt. Hood NF Diversity Action Group wasn't sure how things would unfold when they invited employees to join them for their inaugural Day of Service, but at the end of the day big hearts and helping hands turned out in droves at the Sunrise Community Center in Gresham, Oregon.

Dedicated to advancing inclusiveness, diversity awareness and improving employee morale, the Mt. Hood NF Diversity Action Group teamed up with the non-profit Rockwood Community Development Corporation this past May to help rehab the neighborhood's newest community center. At 12,500 sq. ft. the former restaurant building needed help with painting, cleaning and yardwork, and volunteers from all over the Mt. Hood and Gifford Pinchot NF's knocked out walls and pulled out hundreds of chairs, booths and tables so the space could be re-modeled.

"All in all I felt I was helping to make someone's life better," said **Kameron Sam**, District Ranger for the Barlow RD on the Mt. Hood NF. "I appreciate the work the Rockwood community leaders are doing and I think the Diversity Action Group's effort to connect to the urban community was a great beginning."

The Rockwood Community Development Corporation offers ESL classes, hosts a Homework Club and the building's commercial kitchen serves as a place where budding entrepreneurs can prepare food for sale. Faith activities are active at the center and last year 150 kids participated in their summer program. With the additional office space expect to see more kids and more programs generating hope, change and pride in one of Oregon's most diverse communities.

"It felt really good to give a few hours of my time and energy to benefit the community," exclaimed **Judy Hatch**, Purchasing Agent for R6 and Diversity Action Group member. "It seems like when I'm helping someone else, the weeds pull easier. I hope we can make this a tradition!"



who's on THE MOVE

- **Steven Teegardin**, Agricultural Extension Officer for the Peace Corps (Tanzania) to Timber Sale Preparation Technician
- **Saren Whitney**, Fire Prevention Technician for the McKenzie River RD on the Willamette NF to Fire Business Manager for the Willamette NF
- **Ian-Huei Yau**, Peace Corps Volunteer to Geospatial Systems Specialist for CSA2 in Springfield, OR

who's MOVING OUT

- **Kristen Austin**, Supervisory Civil Engineer for the R6 Sub-Regional Engineering Organization to the Federal Highways Administration
- **Nanci Curtis**, Deputy Fire Management Officer for the Santiam River Zone on the Willamette NF to the BLM (Siuslaw and Salem, OR)

who's MOVING ON

- **Randy Green**, Fire Management Officer for the Middle Fork RD on the Willamette NF
- **Gene Mackenzie**, Mechanic for the Deschutes NF
- **Doug Shank**, Engineering Geologist for the Willamette NF
- **Mike Teems**, Facilities Manager for Timberline Lodge on the Mt. Hood NF

cultivating forest service WILDERNESS STANDARDS

By: **Heather Ibsen**, Public Affairs Specialist, Gifford Pinchot NF

Recently Forest Service staff and volunteers came together on the Gifford Pinchot NF for Wilderness Skills Stewardship Training to pass on knowledge to create the next generation of citizen stewards.

Organized by a trio of FS Wilderness Rangers, the weekend-long training on the Mount Adams RD in Trout Lake, Washington included some incredible and talented people both inside and outside of the agency. **Jon Erickson** from the Columbia River Gorge National Scenic Area, **Justin Ewer** from the Gifford Pinchot NF and **Jason Fisher** from the Deschutes NF enlisted the help of wilderness staff from Forests across the Region to teach Leave No Trace principles along with more advanced stewardship skills to members of mountaineering, outdoor and trail clubs interested in helping preserve Pacific Northwest Wilderness Areas.

“When we were putting together this training, we noticed wilderness enthusiasts rarely get to interact with Rangers who work professionally in this field,” said Erickson. “So we are putting more emphasis on training and linking people together – to build a community around Wilderness.”

Volunteers learned basic skills to help them support the agency by acting as eyes and ears on the ground, how to use a radio, how to navigate by map and compass and how to work with the general public. They also learned more technical skills such as how to work with equestrian trail users and how to close or reduce campsites that detract from Wilderness character. Restoration techniques taught included transplanting native vegetation to shrink the perimeter of campsites to adding rocks, boulders and trees to encourage campers to remain within a smaller footprint.

As more people experience Wilderness, it becomes more important to have well-trained people to help protect the qualities of wilderness. The Wilderness Skills Stewardship Training is an important tool to ensure our staff and volunteers can contribute to effective Wilderness management.



teaching window preservation FOR TODAY AND THE FUTURE

By: **Raven Reese**, Public Affairs Intern, Mt. Hood NF

The Mt. Hood NF, the Pacific Northwest Regional Heritage Program and the Northern Regional Historic Preservation Team hosted a 1-day course on window preservation for heritage and facilities maintenance staff.

Over 13 participants learned about wood sash windows, common repairs and preservation techniques. **Cathy Bickenheuser**, Exhibit Specialist for the R1 Historic Preservation Team provided her expertise and knowledge for the training; strengthening a new partnership in historic preservation between Regions 1 and 6.

"This is a pretty unique but very informative class," said **Allie Wenzl**, Historian and Tribal Realties Advisor for the Mt. Hood NF. "It's especially important in regards to preservation on the forests."

"Many facilities within the agency are historic and this training provided skills for FS staff to preserve our structures into the future."



view from THE FIELD

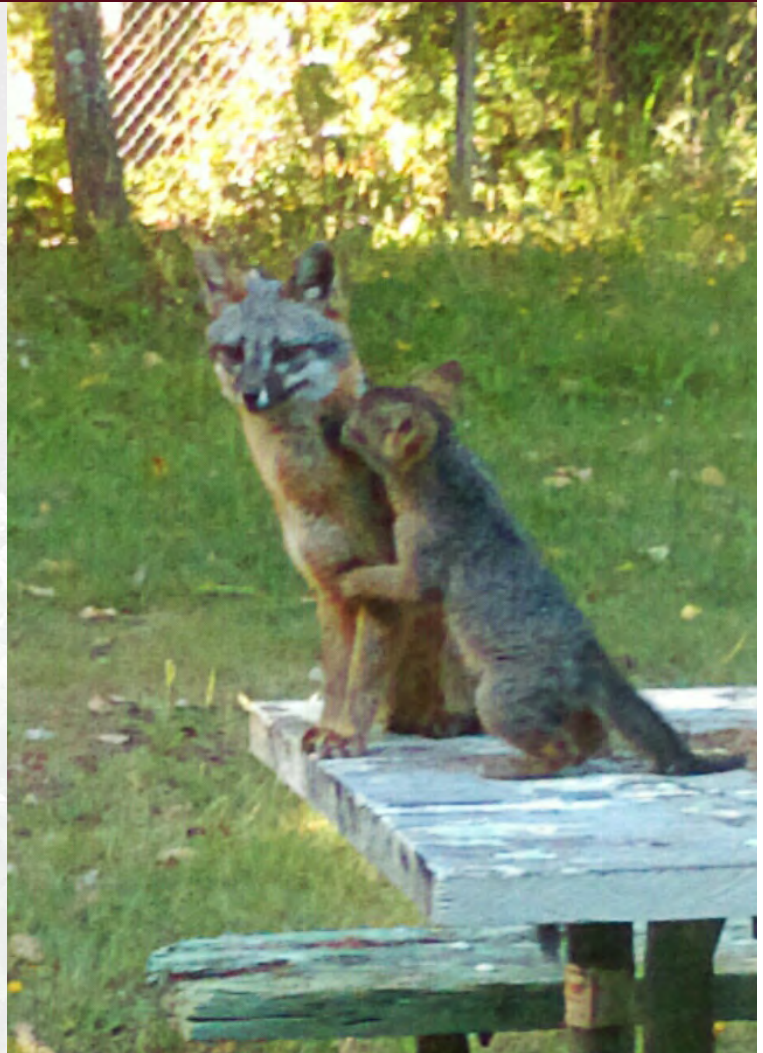
By: **Tish (Patti) Huber-Dolson**
Information Assistant,
Powers RD\Rogue River-Siskiyou NF

I live and work as a Frontliner here on the Powers RD compound on the Rogue River-Siskiyou NF, and I have some unique visitors living under my shed.

As a city girl originally from Portland, Oregon seeing wildlife is pretty exciting for me. One morning I looked out my dining room window and saw the cutest thing so I snapped a picture.

After sending the picture to two different Wildlife Biologists they both confirmed that I had a mother fox with 3 babies living under my shed. They arrived in May and the picture on the right of the mother and one of her kits was taken in late June.

I have been over the moon having them as my neighbors. They are so much fun to watch when they show themselves and I hope that you enjoy them as much as I have!



one man's opinion THIS ISN'T THE OLD DAYS

By: **Zane Grey Smith Jr., Retired**

Forest Supervisor for the Willamette NF (1970-1974)

WO Director of Recreation, Wilderness, Cultural Resources & Trails (1974-1978)

Regional Forester for Region 5 (1978-1988)

I often hear from my retired FS colleagues that times really have changed, and that we didn't used to do things that way. That certainly is true, but as I look back over the three generations my family worked for the Forest Service and as I look to my forestry son who's engaged in public land management, I marvel at the way the current work force has responded to change. Over the years our Mission has been tweaked through legislation but it still remains the overall guidance for the agency and each generation has had to accommodate the changing demands and the priorities our public expresses for the management of National Forests. My opinion is that the Forest Service has managed these changes while staying true to the Mission.



Zane G. Smith Sr. (1926-1968)

It has not been easy to deal with course changes. After all forestry and resource management are long term issues demanding a steady hand to ensure a healthy future. I had to admire my father and grandfather for their performance in light of their particular circumstances. Fortunately they respected the societal changes that fell to my generation. Measuring today's changing demands and priorities on our National Forests, it is plain to see that things have to be done differently again.

These demands have become quite difficult for today's leadership and workforce. The Mission remains, but the obstacles are substantial. Region 6, like the rest of the organization, has been impacted by declining budgets, difficult issues coming before the courts, climate change and increased urbanization encroaching on the National Forests. Budget cuts have impacted Ranger Districts and Forests leading to consolidations and the consequences of dwindling community support, not to mention the impact of on the ground stewardship.

I think I can safely say that it is remarkable how well Region 6 has responded to these issues. My observation, having visited with many employees, is that even though they recognize all of these difficulties, they remain dedicated, enthused with their work and proud of the Forest Service.

While I can't speak for all of my retired colleagues, I'd like to think that more favorable days will come and I wanted to say BRAVO to those in the active workforce doing the best you can. Working for the Greatest Good isn't always easy, but the work that you do is important and very much appreciated and I'm honored to be given the opportunity to say "Thank You" to the fine employees of the Pacific Northwest Region.



Garvin Smith (1916-1943)



Zane G. Smith Jr. (1952-1988)

rise to the future REGIONAL AWARD

Susan Maiyo, Fisheries Program Manager for the Rogue River-Siskiyou NF, was recently bestowed the Regional Rise to the Future Award at the R6 Fisheries and Watershed Program Manager's Meeting in Seaside, Oregon.

Recognized for her exceptional leadership and outstanding contributions toward protection and restoration of the fisheries and watershed resources, Susan has served as the Forest Fisheries Program Manager since 2007. During her tenure the Rogue River-Siskiyou NF has been held up nationally as an example in Forest Service fisheries management excellence, and the program she oversees is incredibly diverse. From the Elk, Illinois, Applegate, Pistol, Chetco, Winchuck and North Fork of the Smith

Rivers with their recognized salmon and steelhead runs there's approximately 1,200 miles of aquatic habitat including the renown Rogue River, originating in Crater Lake National Park as it snakes it's way through almost 100 miles of National Forest land on it's way to the Pacific Ocean at Gold Beach.

Susan's hard work and preserverence in watershed protection, restoration and monitoring will leave an enduring legacy for years to come. The Rise to the Future Award is the highest national recognition of aquatic accomplishment that the Forest Service bestows, so congratulations Susan on a job well done!



agency partner of the year PACIFIC CREST TRAIL ASSOCIATION

Recognized for all of the work that he's done over the years to help the Pacific Crest Trail, **Marv Lang**, Recreation Forester for the Deschutes NF, was recently named Agency Partner of the Year by the Pacific Crest Trail Association.

In 2008 Marv and Dana Hendricks, the PCTA Regional Representative, collaborated to pilot the version of the partnership volunteer vacation trail crew that's now known as the PCTA Skyline Crew.

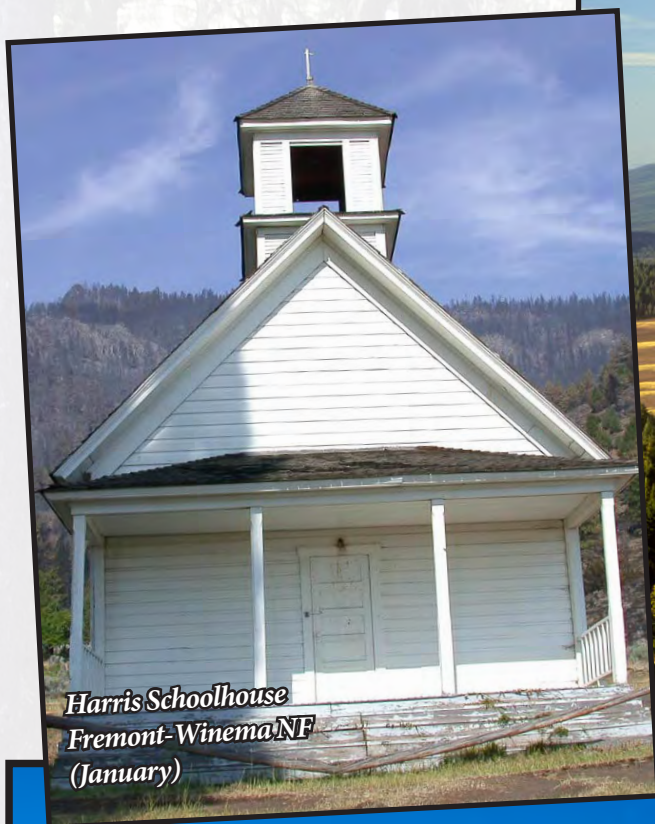
For many years, even after the crew program spread to serve the PCT on 5 Forests, Marv continued to administer and supervise the bulk of the FS staffing support for the program.

His contributions have greatly enhanced the PCTA's ability to partner effectively and to get great work done. Great job on a well deserved award!



where in the region

PAST ANSWERS



*Harris Schoolhouse
Fremont-Winema NF
(January)*



*Mt. Thielsen
Umpqua NF and
Fremont-Winema NF
(March)*



*Picture Lake and Mt. Shuksan
Mt. Baker-Snoqualmie NF
(February)*

With some challengingly beautiful selections it was no easy task to identify these jewels of Oregon and Washington.

Please join us in congratulating the winner's of our quarterly **Where in the Region: Photo Contest.**

1st Place:

Andrew Bower on the Olympic NF
Sandee Conner on the Willamette NF
Michael Gaddis on the Mt. Baker-Snoqualmie NF
Christina Mead on the Mt. Hood NF

2nd Place:

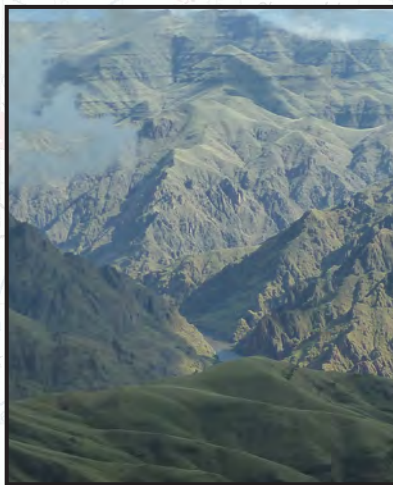
David Knutson on the Rogue River-Siskiyou NF
Jerry Messinger at the Redmond Air Center
Kenneth Ratliff on the Okanogan-Wenatchee NF

digger BEAR



As always, thanks to **Jimmy Turner**, Walla Walla RD

where in the region ANSWER



Last month's **Where in the Region** photo is taken in Hells Canyon which is managed by the Wallowa-Whitman NF in Oregon.

After copper was discovered in 1903 the Eureka Mining and Smelting Company raised \$3 million to develop a mine. With no roads or trails in the area, a steamboat named the *Imnaha* was constructed to run the 55 miles of rapids and whitewater that lay on the Snake River between Lewiston, Idaho and the prospective mine site.

Through great effort machinery was barged to the site. Tragically, before it could be unloaded, the boat capsized and sank into the deep water. Fortunately no one was injured but without machinery work came to a halt and by the time a new boat could be constructed the Hells Canyon mining boom had ended.

r6update STAFF

Director of Communications and Community Engagement
Shoshona Pilip-Florea
smpilipflorea@fs.fed.us 503.808.2240

Managing Editor, Margaret Petersen
mpetersen02@fs.fed.us 503.808.2414

Editor-at-Large, Josh Dawson
jdawson@fs.fed.us 541.782.5229



where IN THE REGION

Win a prize for the most correct answers this quarter!

Using the following haiku hints,
try to figure out the location of the photo.

Send your guess to r6update@fs.fed.us.



One of two places
delivering mail by boat
continuously