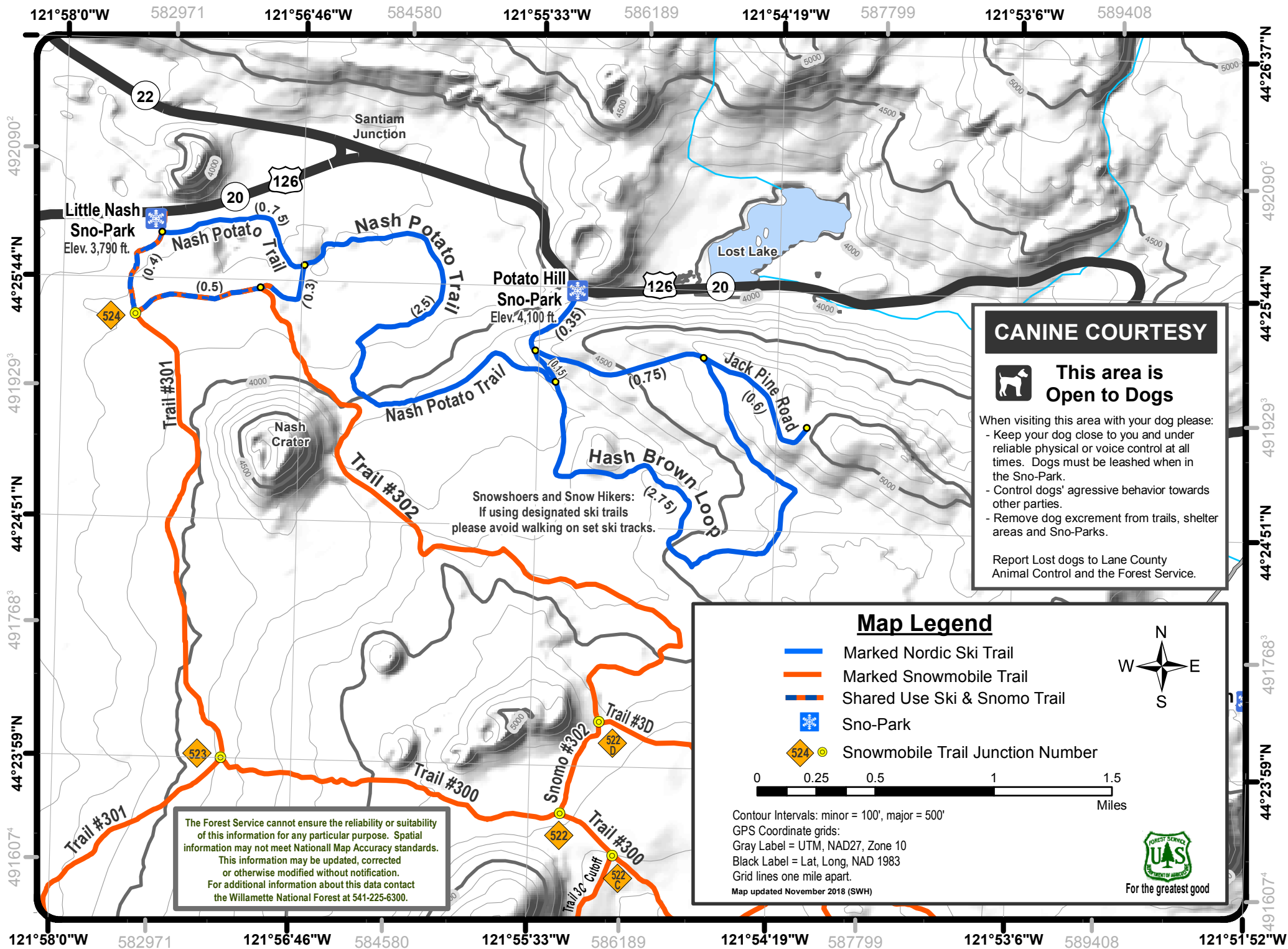


Potato Hill/Little Nash Sno-Park Nordic Trails



CANINE COURTESY



This area is Open to Dogs

- When visiting this area with your dog please:
- Keep your dog close to you and under reliable physical or voice control at all times. Dogs must be leashed when in the Sno-Park.
 - Control dogs' aggressive behavior towards other parties.
 - Remove dog excrement from trails, shelter areas and Sno-Parks.

Report Lost dogs to Lane County Animal Control and the Forest Service.

Map Legend

- Marked Nordic Ski Trail
- Marked Snowmobile Trail
- — Shared Use Ski & Snomo Trail
- ❄️ Sno-Park

- 524 ● Snowmobile Trail Junction Number



Contour Intervals: minor = 100', major = 500'

GPS Coordinate grids:

Gray Label = UTM, NAD27, Zone 10

Black Label = Lat, Long, NAD 1983

Grid lines one mile apart.

Map updated November 2018 (SWH)



For the greatest good

The Forest Service cannot ensure the reliability or suitability of this information for any particular purpose. Spatial information may not meet National Map Accuracy standards. This information may be updated, corrected or otherwise modified without notification. For additional information about this data contact the Willamette National Forest at 541-225-6300.