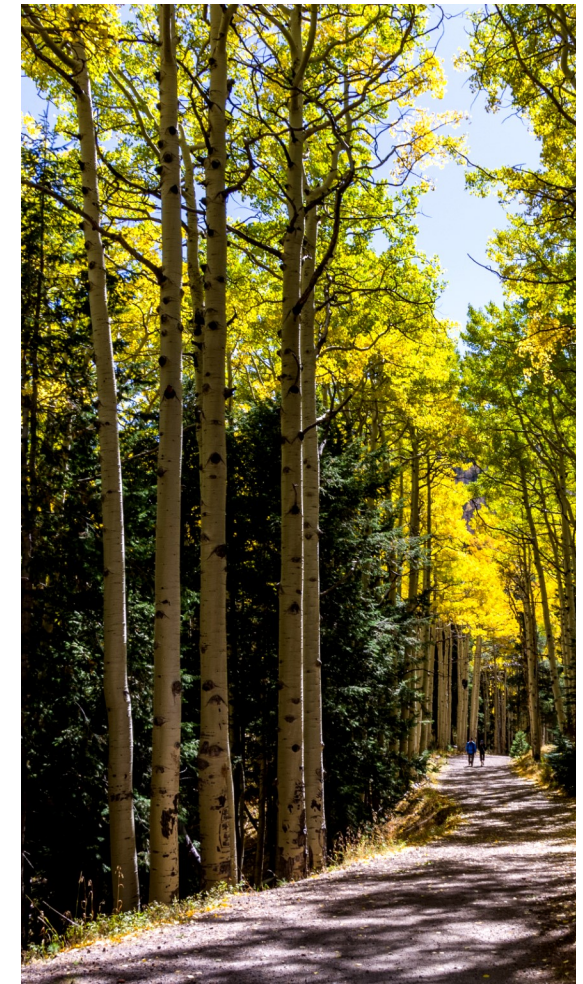
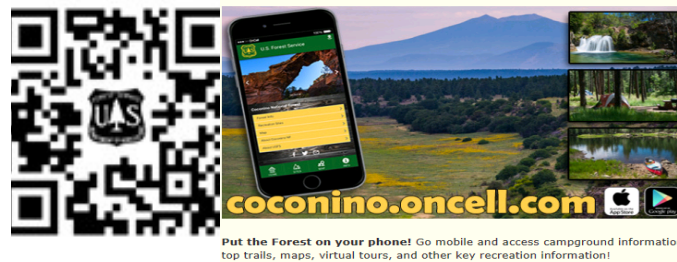
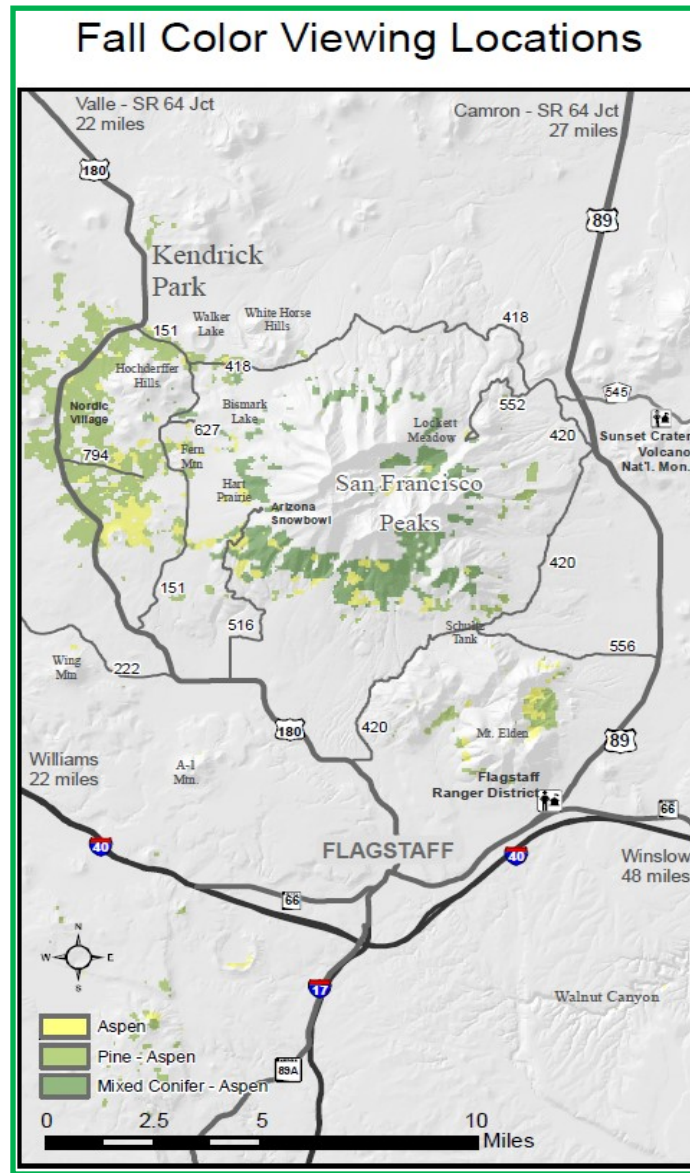


- **Be respectful:**  
parking will be tight
- **Be cautious**  
on the drive down
- **Be courteous** and pull over  
and out of the way to stop or  
take pictures
- **DO NOT** park in meadows



## LOCKETT MEADOW



**Fall 2020**

Rules and Alternatives  
Coconino National Forest  
Flagstaff Ranger District





## Lockett Meadow: Things To Know

Lockett Meadow colors are magnificent! However, there are some things you should know before you go:

- Visit on a weekday to avoid closures
- The road (FS 552) is narrow, rough, steep, and difficult for passenger cars
- Be prepared on Saturday and Sunday to be denied entrance. No uphill (entering) traffic permitted during busy times on weekends.
- Parking capacity is 100 vehicles
- Trailers **strongly** discouraged
- **Uphill traffic has right of way– Downhill traffic yield and pull off safely to side of road**

## Not to worry!

There are alternate places to see the colors

## Alternative Areas

### Hart Prairie Road (FR 151)

Take either Hwy 180 north bound from Flagstaff or FR 418 to FR 151 junction. It's a great trip through aspen groves and superb mountain views.

## More Alternative Areas

### Forest Road 418

This road takes you along the North side of the mountains for great fall colors, especially near Bear Jaw Canyon. It can be a little rough for passenger cars but great for SUVs and AWD vehicles. FR 418 ends at Hwy 180.

### Snowbowl Road (FR 516)

Beautifully scenic, great colors and paved road. Park at the Humphrey's Trailhead and take an easy walk across Hart Prairie. Take the Kachina Trail or Aspen Loop a short distance to thick stands of Aspen.

### Forest Road 794 (off Hwy 180)

A relatively short out and back with terminus at a stunning Aspen stand and views of the peaks.

### Freidlein Prairie (FR 522)

A very rough but beautiful out and back. Please be respectful of campers as this is a dispersed camping area. High clearance vehicles recommended.



Snow Bowl Road

## Leave No Trace Ethics

## The Seven Principles

- Plan ahead and prepare
- Travel and camp on durable surfaces
- Dispose of waste properly
- Leave what you find
- Minimize campfire impacts
- Respect wildlife
- Be considerate of other visitors

## Hikes with fall Colors

### Weatherford

**Length:** Up to 8.7 mi one way **Elevation:** 8,800 to 12,000 ft

**Hiking Time:** 5 hours **Use:** Moderate

**Difficulty:** Moderate to Strenuous

### Abineau/ Bearjaw

**Length:** 7.0 mile loop **Elevation:** 8,500 to 10,350

**Hiking Time:** 4.5 hours (round trip) **Use:** Moderate

**Difficulty:** Strenuous

### Kachina Trail

**Length:** Up to 5 mi one way **Elevation:** 9,500 feet

**Hiking Time:** 2.5 hours one way **Use:** Heavy

**Difficulty:** Easy to Moderate

## Contact Us

**Flagstaff Ranger Station**

5075 Hwy 89  
Flagstaff, AZ 86004

928-526-0866 M-F

