

Sulphur Ranger District
9 Ten Mile Drive
Granby CO 80446
(970) 887-4100
FAX: (970) 887-4111



United States Department of Agriculture

HIKING

HORSESHOE LAKE TRAIL # 23

Difficulty: Difficult

Trail Use: Moderate

Length: 1.7 from the Kinney Creek Trail junction; DISTANCES ARE ONE-WAY

Elevation: 10,300 feet at the Kinney Creek Trail junction; 11,200 feet at Horseshoe Lake

Use: Hiking and horse

Access:

- Take CR 3, ½ mile east of Parshall on Highway 40 or take CR 15, 24 miles south of Kremmling on Highway 9.
- Follow either to CR 30 (FSR 138). Follow County Road 30, 5 miles to Kinney Creek Road (FSR 141).
- Continue on FSR 141 about 4 miles to the TH.

Trail Highlights:

- This trail forks from the Kinney Creek Trail, 1/3 mile after reaching the Byers Peak Wilderness.
- The trail crosses Kinney Creek and continues southwards. The trail climbs gradually until a rock garden appears to the east.
- Here the trail climbs steeply for a short distance, but soon returns to a gradual climb.

Important Information:

- Horseshoe Lake Trail is located within the Byers Peak Wilderness.
- Mechanized/motorized travel is prohibited.
- Do not camp within 100 feet of developed trails or bodies of water.
- Pets must be under control at all times.
- Group size is limited to 12 people and/or livestock.
- Follow Leave No Trace principles.



For More Information:

Sulphur Ranger District
9 Ten Mile Drive; PO Box 10
Granby, CO 80446-0010
(970) 887-4100

USDA is an equal opportunity provider and employer.



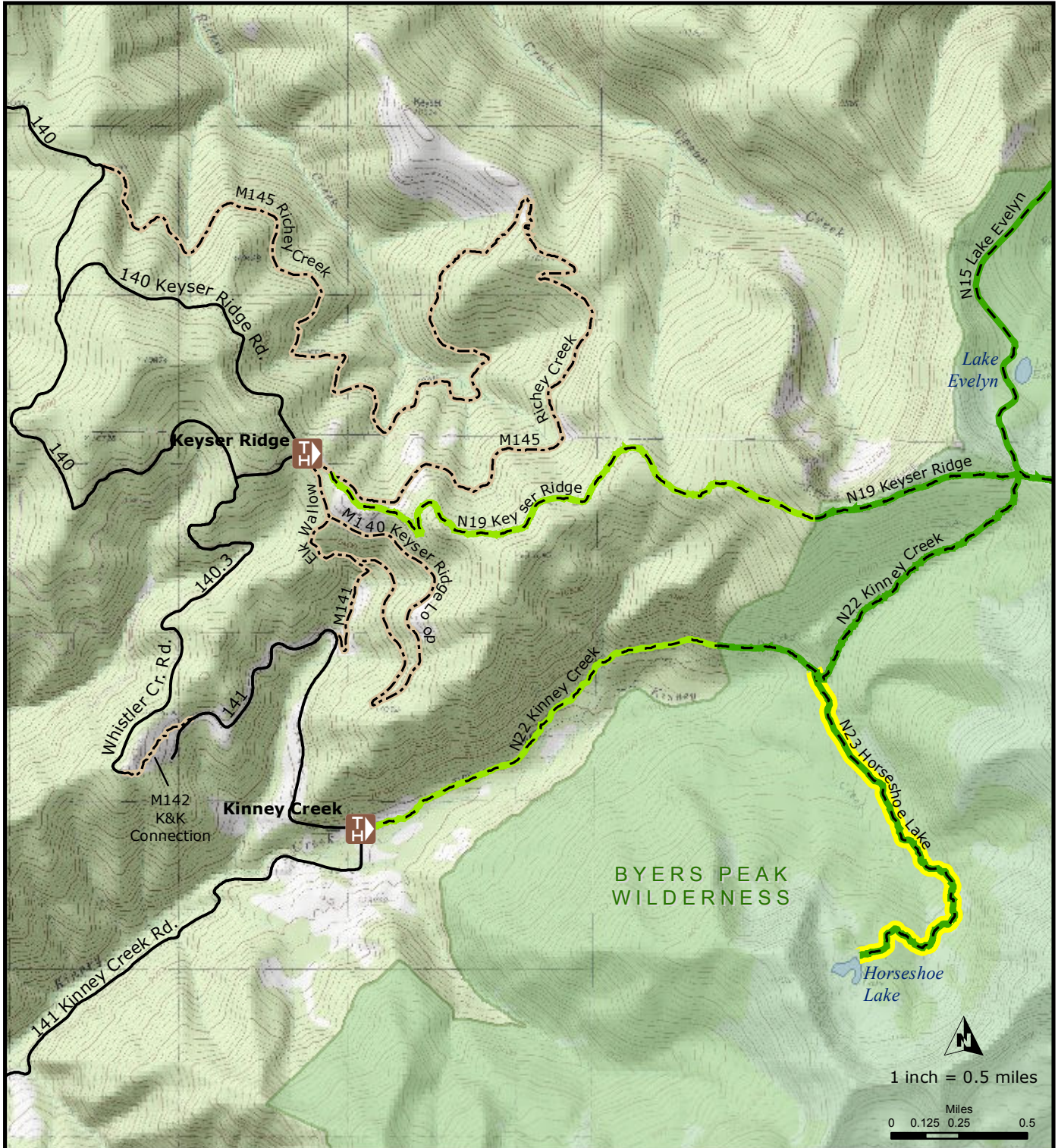
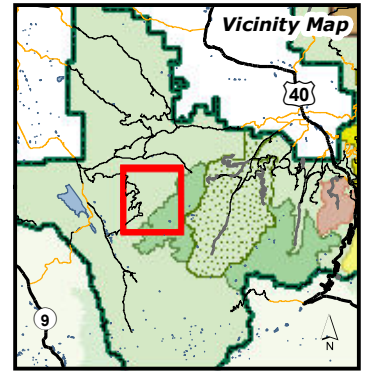
Arapaho National Forest
Sulphur Ranger District

INDIVIDUAL TRAIL MAP

April 2012

Route ID: N23
Name: Horseshoe Lake
GIS Miles: 1.7

- | | | | |
|--|-------------|--|------------------------------------|
| | Trailhead | | Motorized Trail - Motorbike/ATV |
| | Restroom | | Motorized Trail - Motorbike |
| | Gate | | Non-Motorized Trail |
| | Forest Road | | Non-Motorized/Non-Mechanized Trail |
| | Other Road | | Continental Divide Trail |
| | | | SRD Boundary |



This product is reproduced from geospatial data prepared by the USDA Forest Service. Geospatial data and product accuracy may vary. Using geospatial products for purposes other than those for which they were created may yield inaccurate or misleading results. The Forest Service reserves the right to correct, update, modify, or replace geospatial products without notification. For more information contact the Arapaho/Roosevelt National Forest Supervisors Office at 970-295-6600.