

Sulphur Ranger District
9 Ten Mile Drive
Granby CO 80446
(970) 887-4100
FAX: (970) 887-4111



United States Department of Agriculture

HIKING

PARIKA LAKE TRAIL # 29.2

Difficulty: Moderate

Trail Use: Light

Length: 1.1 miles. DISTANCES ARE ONE-WAY

Elevation: 10, 440 feet Junction of Baker Gulch Trail and Parika Lake Trail, 12,000 feet at the saddle between Fairview Mountain and Parika Peak

Use: Hiking and Horse

Access:

- Highway 34 to Rocky Mountain National Park's (RMNP) west entrance.
- From the park entrance, follow Trail Ridge Road (HWY 34) for 6.4 miles to the Bowen/Baker TH parking area. The junction for the Parika Lake Trail is 5.3 miles up the Baker Gulch Trail.
- Hike the Baker Pass Trail from Baker Pass to the Parika lake Trail (see Baker Pass Trail).

Trail Highlights:

- The Parika Lake Trail travels through some of the wildest and most primitive country in the Sulphur Ranger District.
- Camping spots are readily available.
- Parika Lake on first sight appears to be wild and virtually uninhabited; all of its natural features are characteristics of a harsh climate.

Important Information:

- The Never Summer Wilderness shares its eastern boundary with Rocky Mountain National Park (RMNP). An entrance fee is required for RMNP.
- A 'no fee' parking permit is required for overnight parking at the TH in RMNP. Contact RMNP at 970-586-1242.
- Pets are prohibited on the trails in RMNP. Pets must be under control at all times in the Never Summer Wilderness.
- No camping or campfires within 100 feet of a developed trail or bodies of water.
- Group size is limited to 15 people and livestock.
- Follow Leave No Trace principles.



For More Information:

Sulphur Ranger District
9 Ten Mile Drive; PO Box 10
Granby, CO 80446-0010
(970) 887-4100

USDA is an equal opportunity provider and employer.



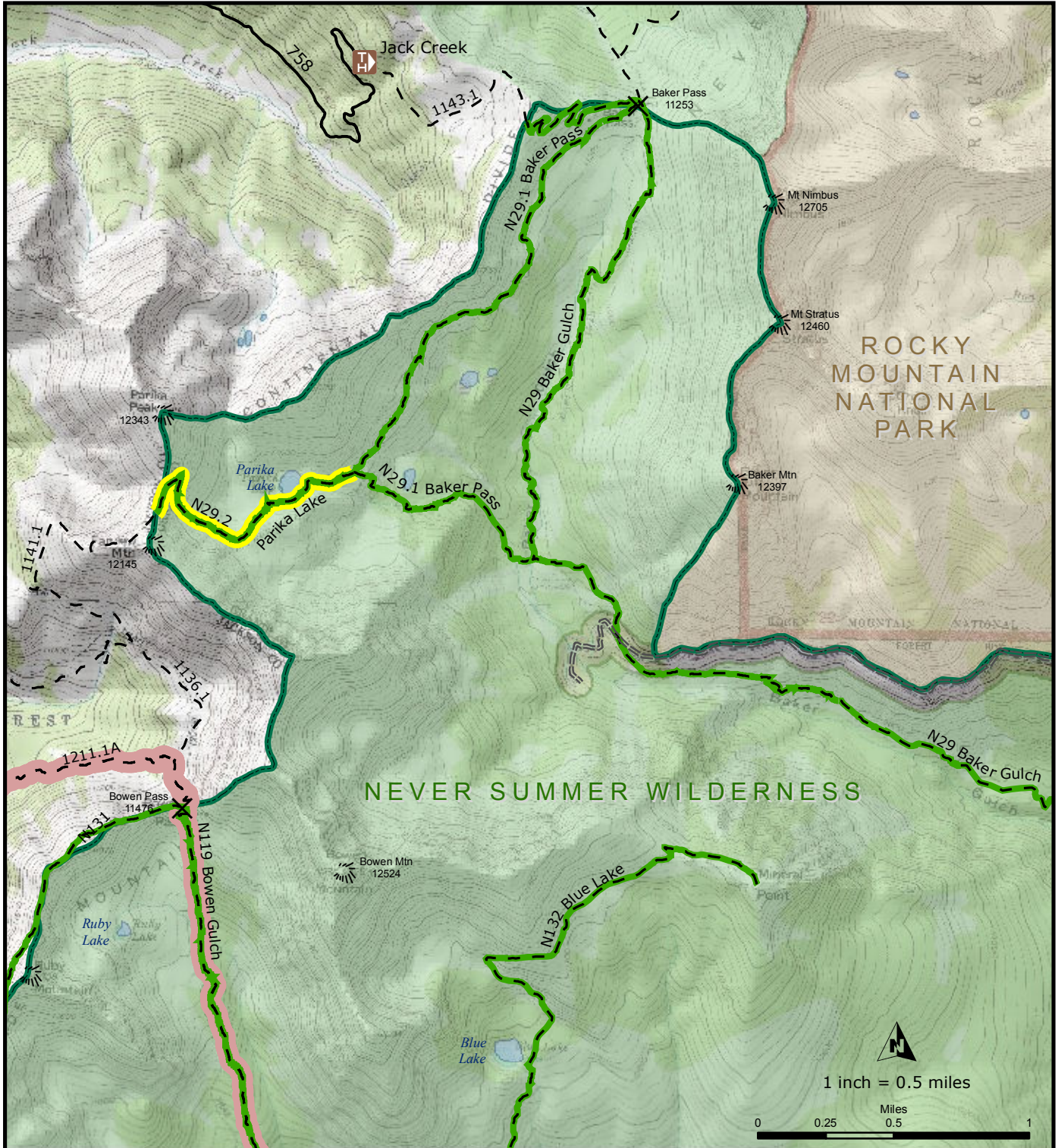
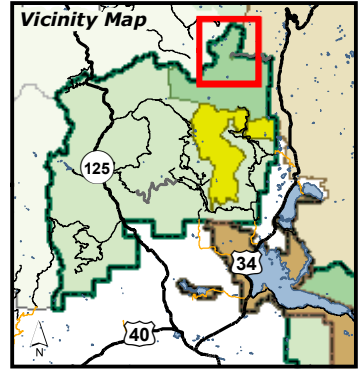
Arapaho National Forest
Sulphur Ranger District

INDIVIDUAL TRAIL MAP

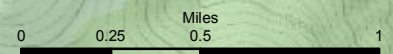
May 2014

Route ID: N29.2
Name: Parika Lake
GIS Miles: 1.1

- | | | | |
|--|-------------|--|------------------------------------|
| | Trailhead | | Motorized Trail - Motorbike/ATV |
| | Restroom | | Motorized Trail - Motorbike |
| | Gate | | Non-Motorized Trail |
| | Forest Road | | Non-Motorized/Non-Mechanized Trail |
| | Other Road | | Continental Divide Trail |
| | | | Non-Motorized Road |
| | | | SRD Boundary |



1 inch = 0.5 miles



This product is reproduced from geospatial data prepared by the USDA Forest Service. Geospatial data and product accuracy may vary. Using geospatial products for purposes other than those for which they were created may yield inaccurate or misleading results. The Forest Service reserves the right to correct, update, modify, or replace geospatial products without notification. For more information contact the Arapaho/Roosevelt National Forest Supervisors Office at 970-295-6600.