

**Special Restriction**  
**AREA CLOSURE for OCCUPANCY AND USE REGULATIONS**  
**USDA - FOREST SERVICE**  
**BLACK HILLS NATIONAL FOREST**

Pursuant to 36 CFR 261.50(a) and (b) the following acts are prohibited within the Black Hills National Forest, as described in this order and as depicted on the attached maps of these Botanical Areas until rescinded (Exhibits A-F).

- (1) To possess or operate a motorized vehicle off Forest Development Roads within these Botanical Areas. 36 CFR 261.53(b)

Pursuant to 36 CFR 261.50(e) the following are EXEMPT from the order:

- (1) Persons with a USDA Forest Service permit specifically authorizing the otherwise prohibited act.
- (2) Any Federal, state, or local officer, or member of an organized rescue or fire fighting force in the performance of an official duty.
- (3) Over-the-snow-motorized travel on designated routes and areas.

Done at Custer, South Dakota, this 7<sup>th</sup> day of October, 2004.

*/s/ Brad Exton*

**BRAD EXTON**

Acting Forest Supervisor

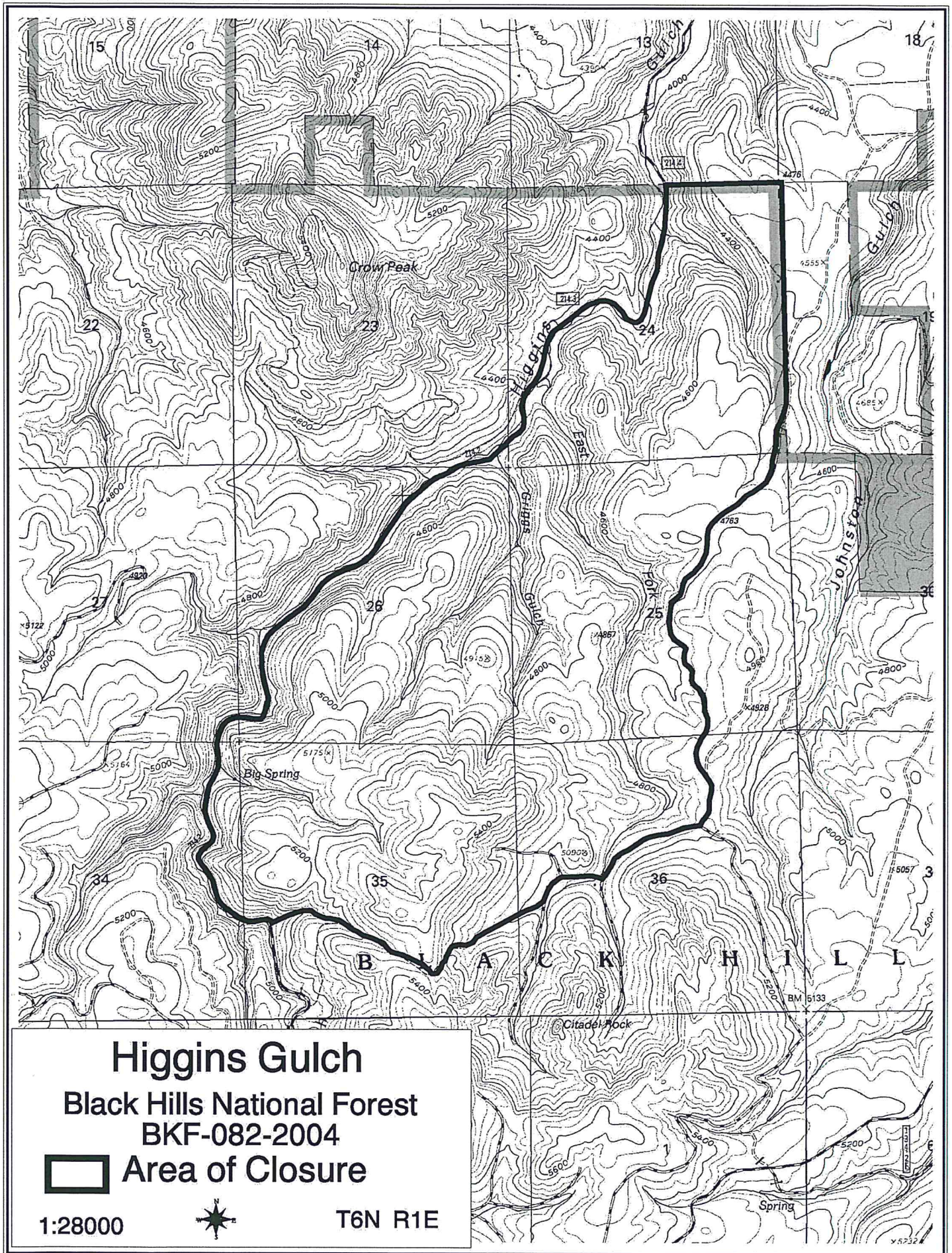
Violations of this prohibition are punishable by imprisonment for not more than six (6) months, a fine of not more than \$5,000 or both. *Title 16, United States Code, Section 551, Title 18, United States Code, Section 3571.*

### Management Objectives

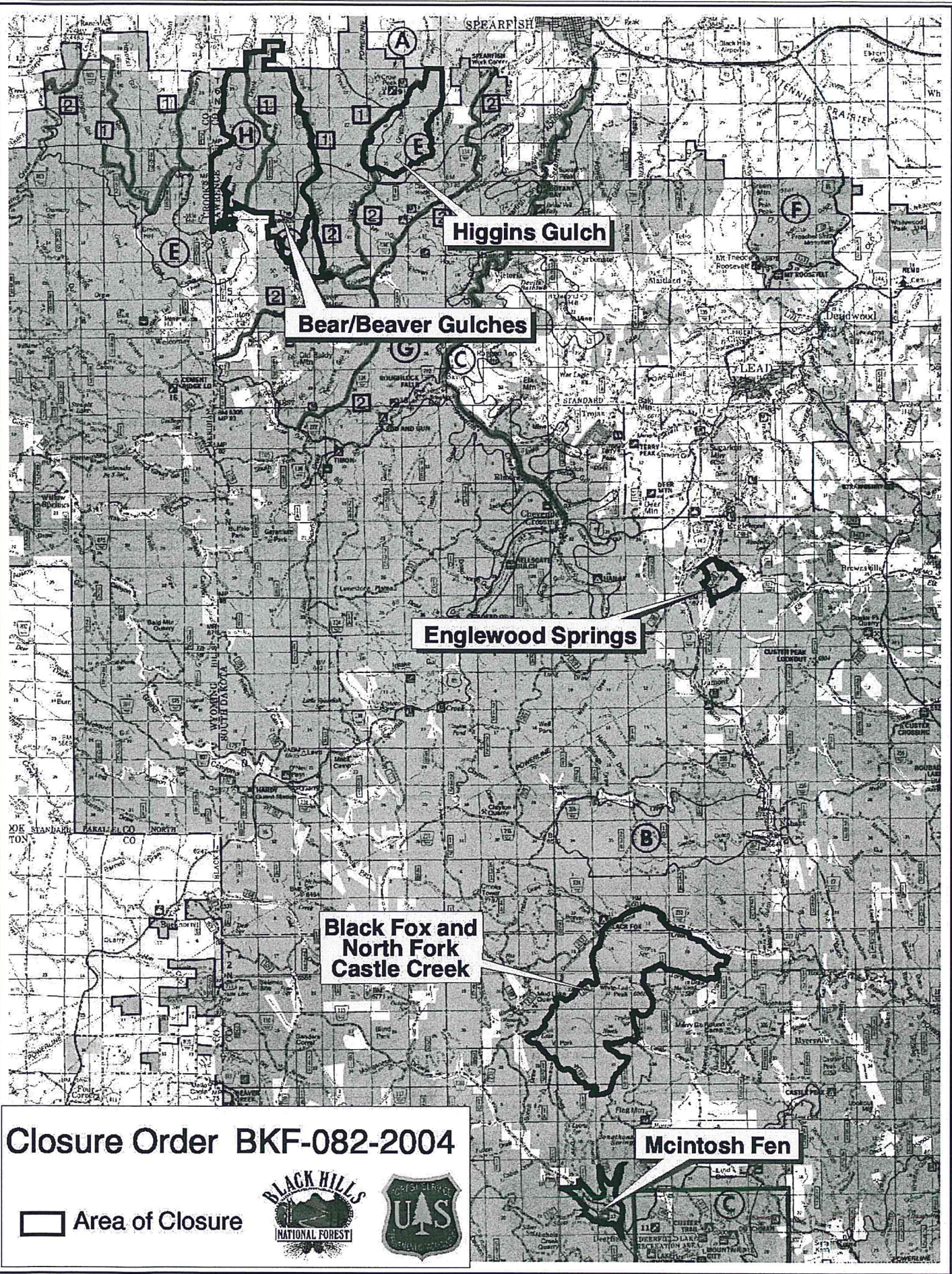
*Maintain or enhance the botanical features of these areas (Management Area Objective 3.1-201 Black Hills Forest Plan). This Management Area contains Travel Management Standards (moved to standards through Phase 1) including:*

- *9101. Travel is restricted to designated routes.*
- *9102. Off-road motorized travel is prohibited.*
- *9103. Over-the-snow-motorized travel is restricted to designated routes and areas.*







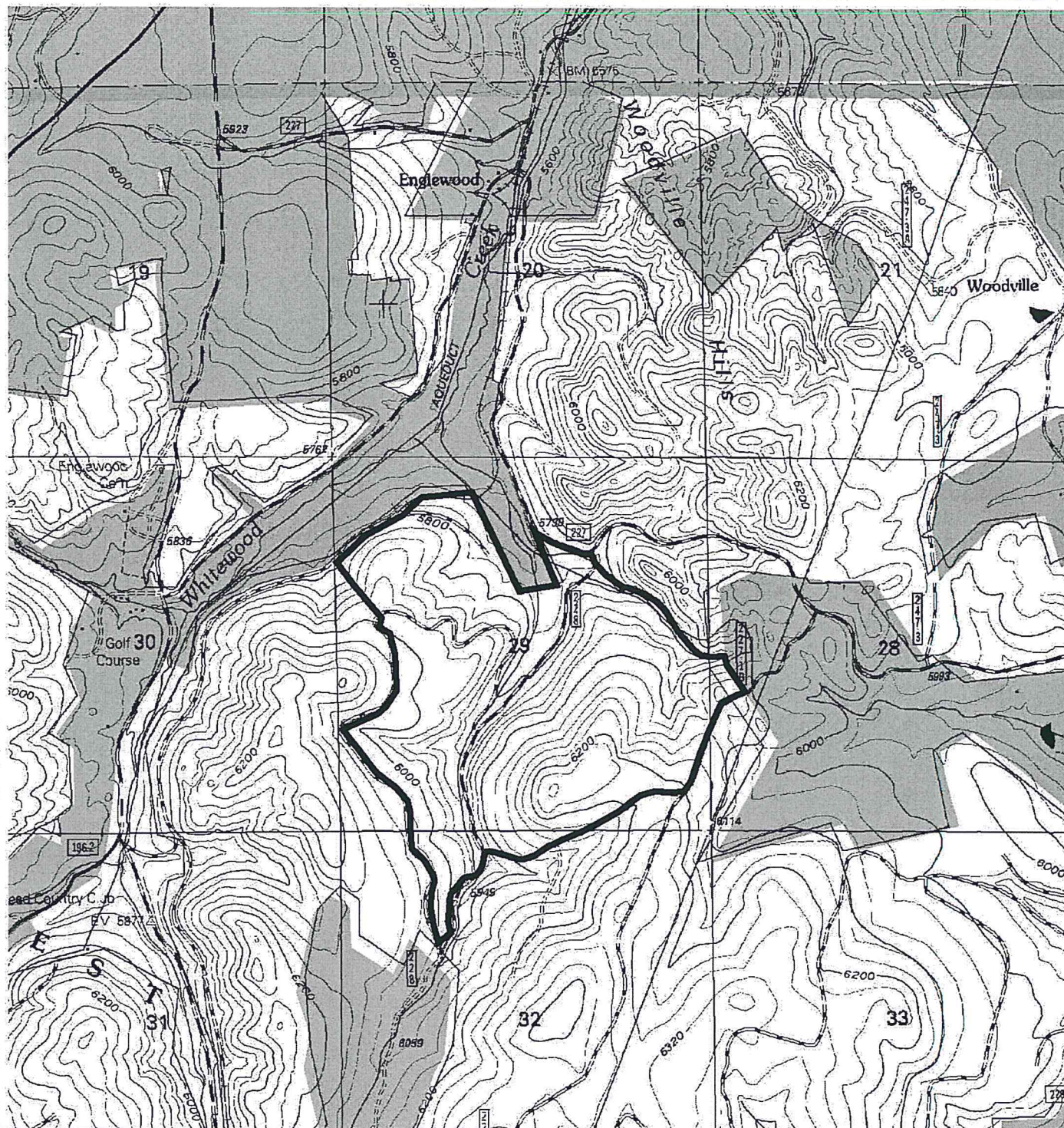


Closure Order BKF-082-2004

Area of Closure







# Englewood Springs

Black Hills National Forest  
BKF-082-2004

 Area of Closure

1:24000



T4N R3E