

Tusayan Ranger District 2023 Christmas Tree Permit Map

KAIBAB NATIONAL FOREST
SOUTHWEST REGION 3



- Interstates & Highways (Paved)
- Primary Roads
- Other Roads
- Non Forest Service Lands (No Cutting)
- Grand Canyon National Park (No Cutting)
- Ranger District Boundary

Additional Information

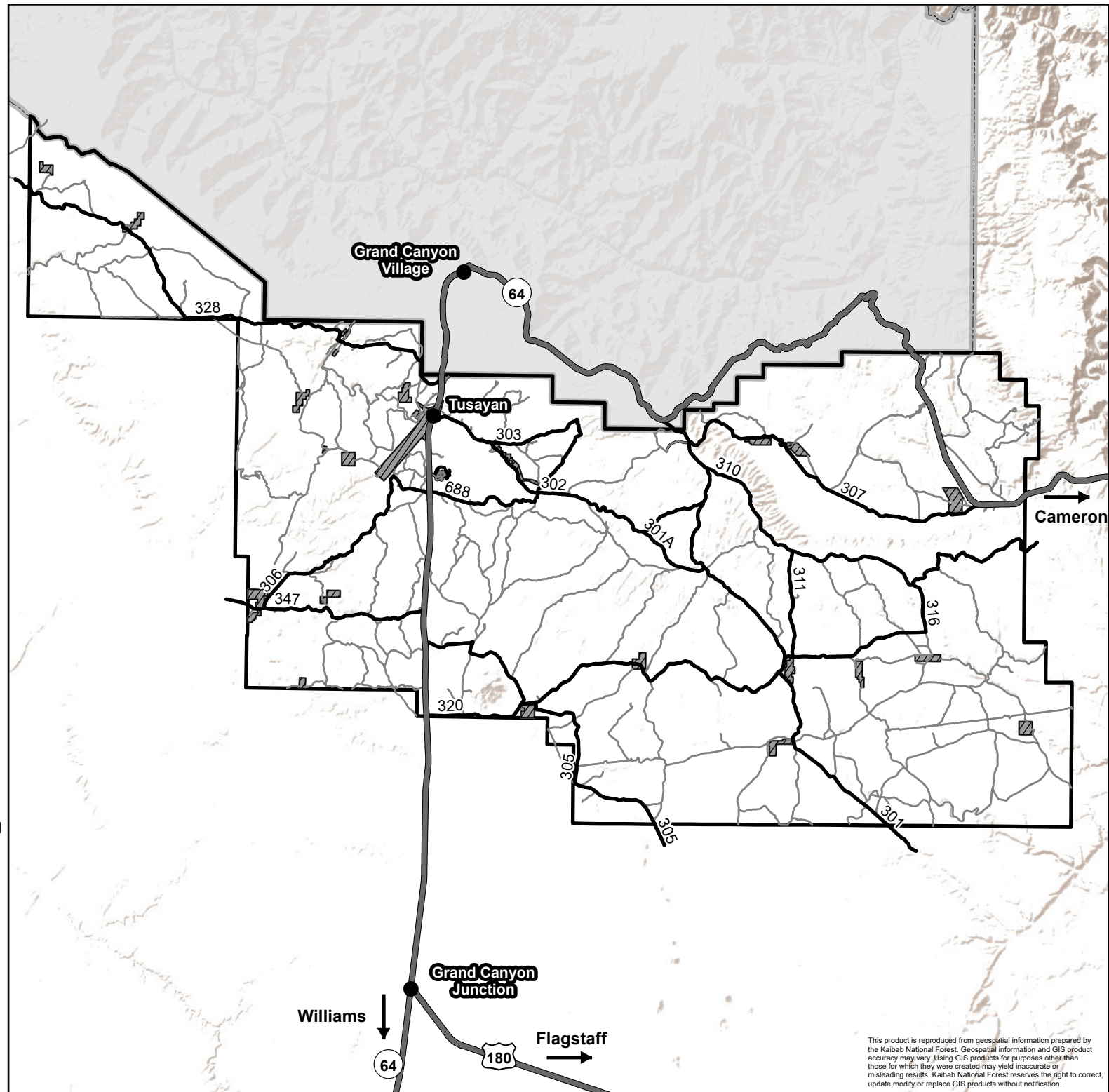
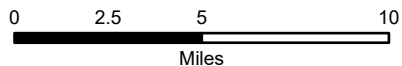
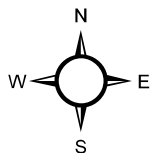
Season dates:
November 1 - December 31, 2023

At this time, there are no restrictions on the type of tree species that can be cut.

Permit does not authorize cutting on private property, within designated Wilderness areas, active timber sales or 300 feet of a paved road.

Forest roads are generally not maintained for winter use. Roads may be closed, snow packed or inaccessible. Call the Ranger Station for the most up to date information on road conditions.

Cross country motorized travel is prohibited. To download a copy of the Motor Vehicle Use Map (MVUM) displaying the official road system scan the code below or visit here:
<http://bit.ly/KNFmaps>



This product is reproduced from geospatial information prepared by the Kaibab National Forest. Geospatial information and GIS product accuracy may vary. Using GIS products for purposes other than those for which they were created may yield inaccurate or misleading results. Kaibab National Forest reserves the right to correct, update, modify or replace GIS products without notification.