

Alternative 3



This multiple-use alternative would modify the current Management Plan direction by adopting additional special area designations, such as Research Natural Areas and Special Interest Areas, and placing added emphasis on native plants and animals and recreation opportunities.

FINAL Environmental Impact Statement

Nebraska National Forest and Associated Units

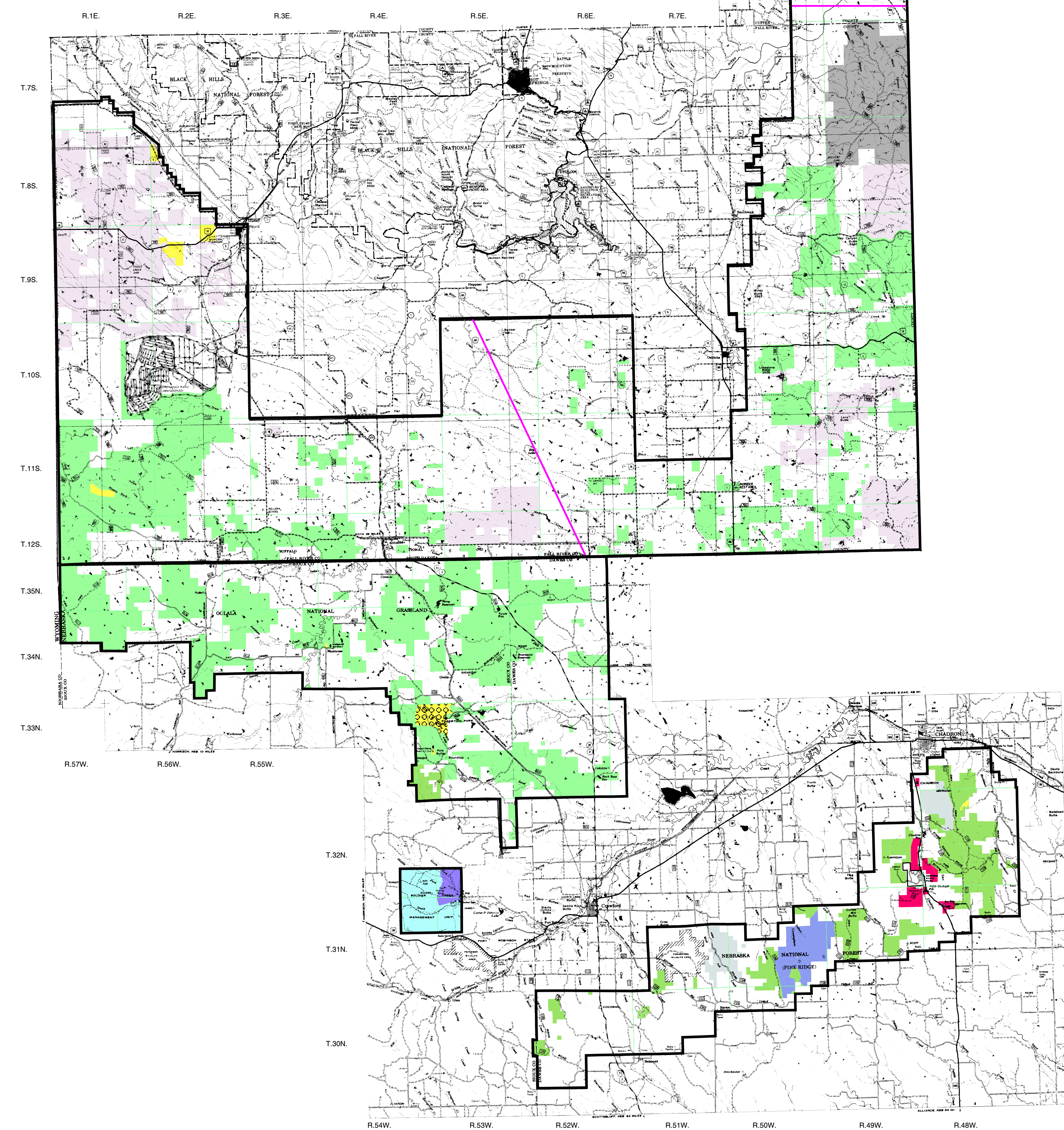
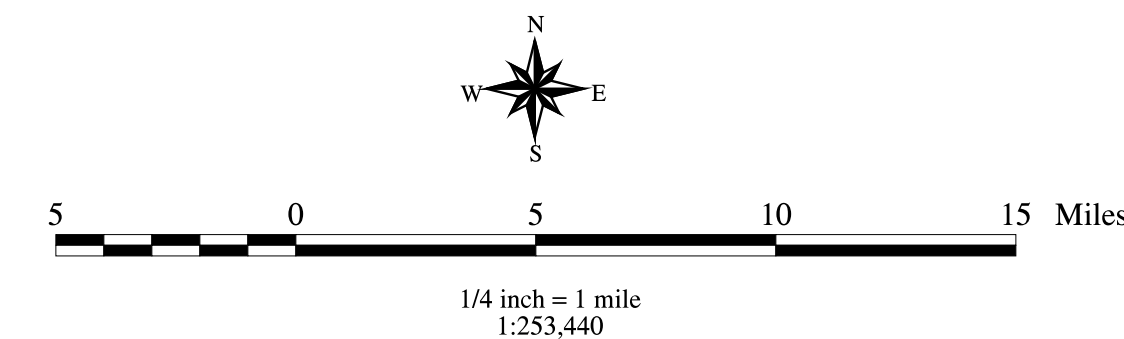
Buffalo Gap National Grassland
 Fort Pierre National Grassland
 Samuel R. McKelvie National Forest
 Nebraska National Forest
 Oglala National Grassland

2000

PLEASE NOTE: Management areas are defined as parts of the grasslands or forests that are managed for a particular emphasis. Each management area has a prescription that consists of a theme, desired conditions, and standards and guidelines that apply to it. The management area prescriptions are grouped into eight major categories, based on a continuum from least evidence of disturbance (Category 1) to most (Category 8).

Geographic areas are all or portions of national grasslands or forests where management is directed towards achieving specified desired conditions. Geographic area management direction is direction that is too specific to apply across large grassland units but is not limited to specific management areas.

The management and geographic area boundaries on this map were computer generated. These lines and their locations are only approximate at this scale.



Management Areas

- 1.1 - Wilderness: Soldier Creek
- 1.2 - Recommended For Wilderness
- 1.31 - Backcountry Recreation Non-motorized
- 1.31a - Backcountry Recreation Non-motorized (Pine Ridge NRA)
- 2.1 - Special Interest Areas
- 2.2 - Research Natural Areas
- 3.51 - Bighorn Sheep
- 3.63 - Black-Footed Ferret Reintroduction Habitat
- 3.64 - Special Plant and Wildlife Habitat
- 4.32 - Dispersed Recreation: High Use
- 5.12 - General Forest and Rangelands: Range Vegetation Emphasis
- 6.1 - Rangeland with Broad Resource Emphasis
- 7.1 - Residential/Forest Intermix
- 8.5 - Nursery
- 8.6 - Administrative Sites

Legend

- Administrative Boundaries
- Township & Range Lines
- Geographic Area Boundaries
- Badlands National Park
- Concurrent Management
- No New Road Construction

Concurrent management areas exist when two compatible management areas exist for the same piece of ground. The dominant management area will show up in the colored legend. The other management area or areas will show up as cross-hatching over the colored legend.

Legend	Concurrent Management	Acres
No New Road Construction		28210

Management Areas	Acres
1.1 - Wilderness: Soldier Creek	7810
1.2 - Recommended For Wilderness	40450
1.31 - Backcountry Recreation Non-motorized	13860
1.31a - Backcountry Recreation Non-motorized (Pine Ridge NRA)	6540
2.1 - Special Interest Areas	26870
2.2 - Research Natural Areas	6800
3.51 - Bighorn Sheep	5650
3.63 - Black-Footed Ferret Reintroduction Habitat	104030
3.64 - Special Plant and Wildlife Habitat	104840
4.32 - Dispersed Recreation: High Use	6520
5.12 - General Forest and Rangelands: Range Vegetation Emphasis	27940
6.1 - Rangeland with Broad Resource Emphasis	701750
7.1 - Residential/Forest Intermix	2610
8.5 - Nursery	70
8.6 - Administrative Sites	230

