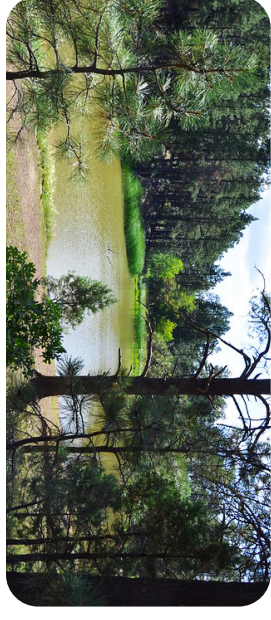




VERDE RANGER DISTRICT
MINGUS MOUNTAIN RECREATION AREA



YOUR RECREATION FEES PRODUCED THIS BROCHURE. THANK YOU VERY MUCH FOR YOUR SUPPORT!



FISHING
Arizona Department of Game and Fish periodically stocks the lake with rainbow trout. A valid State fishing license and trout stamp are required for anglers age 10 and older (www.azgfd.gov).

BOATING

Mingus Lake is a small lake enjoyed by many visitors to the area. Motorized boats are not allowed on Mingus Lake.

Wednesdays are always fee-free.

GET IN TOUCH

PRESCOTT NATIONAL FOREST

Verde Ranger District
300 East Highway 260
Camp Verde, AZ 86322
Phone: 928-567-4121
OR VISIT
www.fs.usda.gov/prescott



CAMPGROUND AND DAY-USE AREAS

- Within the campgrounds, camping is permitted only in designated campsites.
- Camping at Mingus Lake is prohibited.
- All campsites have fire rings and grills. Fires are permitted only in grills or designated fire rings.
- Campgrounds do not have RV hookups (except *Playground Group* and *Potato Patch Loop A*) or any sanitary dump stations.
- Quiet hours are 10 p.m.–6 a.m.
- At least one person must occupy a campsite during the first night after camping equipment is set up.
- Pets must be on a leash 6 feet or shorter and under physical control at all times. Please pick up after your pet.
- Drinking water is available at all campgrounds.
- Cleaning or washing of fish, animals, or food is not allowed at campground hydrants.
- Camping fees include the use of day-use sites within the Prescott National Forest. See pay station for details.
- Day-use hours vary by season. See posted hours at each site.
- Dumping refuse from private property is not allowed.
- Use care when visiting scenic viewpoints—there are steep drop-offs. Supervise small children at all times.

TARGET SHOOTING AND HUNTING

Discharging any weapon within 150 yards of a recreation site or occupied area is prohibited.

36 CFR 261.10(d)



WELCOME TO THE MINGUS MOUNTAIN RECREATION AREA

Nestled in the pine forest above Cottonwood and the historic mining town of Jerome, Mingus Mountain offers relatively cool summertime temperatures and scenic views of the Verde Valley, Sedona's red rocks, the Mogollon Rim, and the San Francisco Peaks. Elevations average 7,200 feet.

USE FEES

The camping and day-use fees charged in the Mingus Mountain Recreation Area are authorized under the Federal Lands Recreation Enhancement Act. Fees are used to maintain and improve facilities and services in the area.

Day-use sites require a daily use fee, valid for the date of purchase. Payment can be made with cash or check at the information board. Payment at one site allows use at all day-use sites on the Prescott National Forest for that day. America the Beautiful passes and Prescott National Forest passes are valid at all day-use sites on the forest. All passes are available for purchase at the Bradshaw/Chino and Verde Ranger District offices.

CAMPGROUNDS

NAME	MAP GRID	CAMP SITES	TOILETS	DRINKING WATER	ELECTRICITY	OPEN SEASON	STAY LIMIT (Within 30 Days)	RESERVATION	FREE
Mingus*	Loop A	6		Yes	No	May 1 to Oct. 31	14	No	\$10
	Loop E	19		Yes	No			Yes	\$14
Playground Group**	Capacity 100			No	Yes	May 1 to Oct. 31	14	Yes	\$75 to \$150
	Loop A	28		Yes	Yes	May 1 to Oct. 31	14	Yes	\$14
Potato Patch**	Loop B	12		Yes	No	May 1 to Oct. 31	14	Yes	\$18

*Mingus Campground has a maximum RV length of 22 feet.

**Playground Group Campground offers a group charcoal grill and picnic area. There are 2 family BBQ grills and 1 fire pit. Fees are based on group size: 1-25 people = \$75 per night; 26-50 people = \$100 per night; 51-75 people = \$125 per night; and 76-100 people = \$150 per night. Maximum group size is 100 people. For reservations, call 877-444-6777 or visit www.recreation.gov.

***Potato Patch Campground has one multifamily site in Loop A for \$28 per night. Site is mix of both first-come, first-served as well as reservations.

DAY-USE AREAS

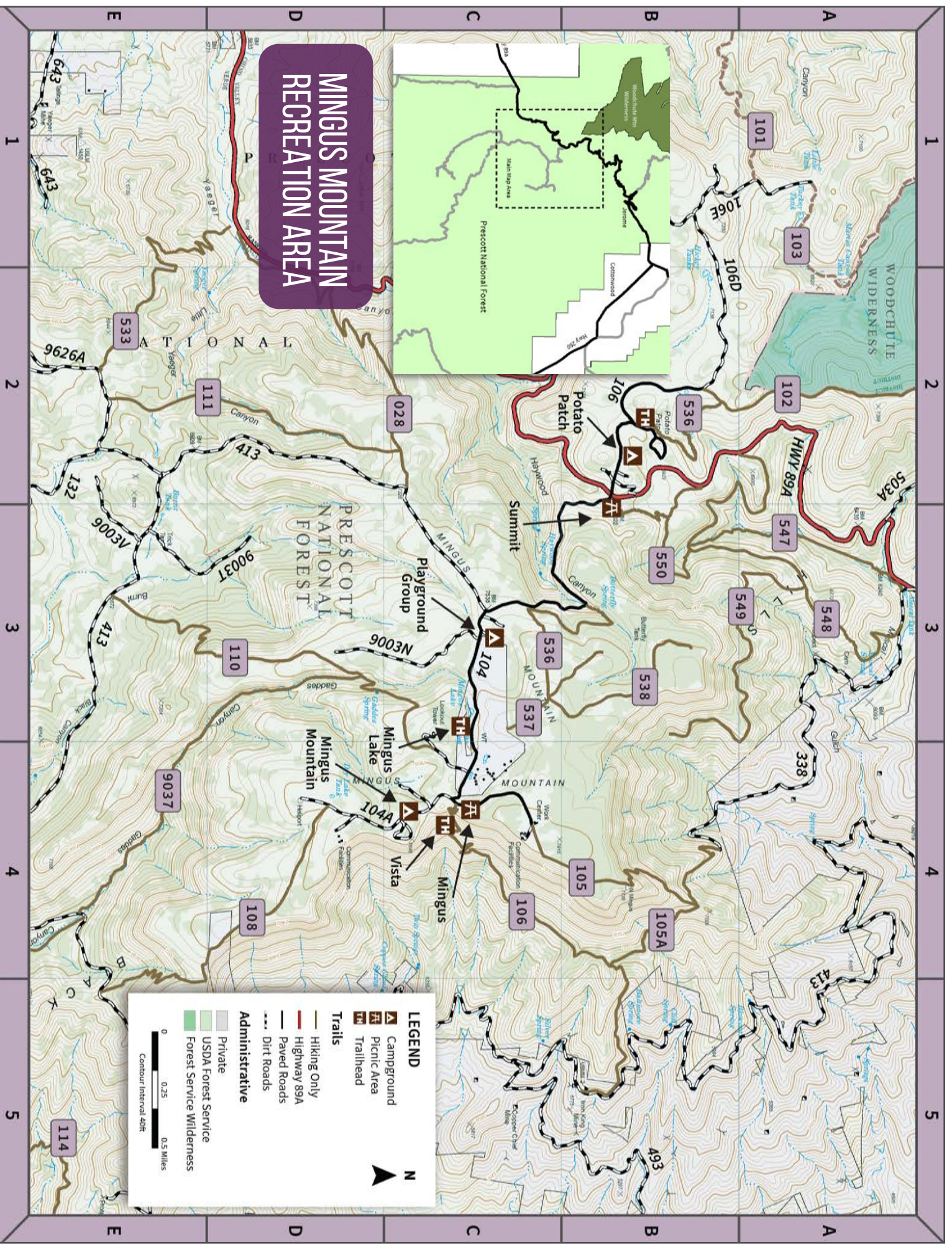
NAME	MAP GRID	NUMBER OF TABLES	TOILETS	DRINKING WATER	ACTIVITIES	FEE (Subject to Change)
Mingus Lake	C3	1		No		\$5
Summit Picnic Area	B3	6		No		None
Vista	C4	6		No		None
Mingus Picnic Area	C4	11		Yes		\$5
Woodchute Trailhead	B2	0		No		None



SHARE THE TRAIL

Trail etiquette is an important part of keeping trails safe and fun for everyone. Please remember to:

- Respect other users.
- Be friendly and courteous.
- Bicyclists yield to horses and hikers. Hikers yield to horses. Stop to allow horses to pass safely.
- Downhill traffic yields to uphill. When in doubt, yield.
- Warn people when you are planning to pass.
- Using trails with headphones is dangerous; avoid their use.
- Bicyclists: Anticipate other users around corners and control your speed.
- E-bikes are only allowed on designated trails.



TRAILS

NUMBER AND NAME	LENGTH (miles)	MAP GRID	TRAIL RATING	ACCESS	ACTIVITIES	COMMENTS
28 - Yeager Canyon	2.0	D2	Difficult	Travel on Forest Road (FR) 104 for 1.3 miles to FR 413. Go west on FR 413 for .8 mile to the trailhead near the fenced wildlife watering device.		This trail is on the west slope of Mingus Mountain with views of Lonesome Valley and the Prescott Valley area.
102 - Woodchute*	2.3	A2, B2	Moderate	Travel on Forest Road 106 for .3 mile to the trailhead. Park in the lot and follow the road about 1/2 mile to the trail.		This trail accesses Woodchute Wilderness. No motorized or mechanized vehicles, including bicycles, are allowed within the wilderness. Chutes for logs once ran down the north side of the mountain.
105 - North Mingus	4.25	C4	Difficult	Travel on Forest Road (FR) 104 to Mingus Campground. Go left at the fork, and the trailhead is near the hang glider site.		Can be used with other trails to make a loop. This trail provides good views of Jerome, Cottonwood, and the Verde Valley.
106 - View Point	1.9	C4	Difficult	Take Forest Road (FR) 104 to Mingus Campground. The trailhead is within the campground.		No motorized or mechanized vehicles, including bicycles are allowed. Provides good views of Cottonwood and the Verde Valley.
108 - Coleman	1.8	D4, E5	Difficult	Travel on Forest Road (FR) 104 to FR 104A (right fork in Mingus Campground), then .5 mile to the trailhead near the radio facilities.		This trail provides good views of the Verde Valley and red rock country above Sedona. Use caution on the steep portion of this trail as it may be eroded!
110 - Gaddes Canyon	2.63	C4, D3, E3	Moderate	Travel on Forest Road (FR) 104 to FR 104B (the lookout road). Follow FR 104B to .1 mile below the lookout; the trailhead is on the left.		Provides an easy day hike from the campground to points overlooking Gaddes Canyon.
111 - Yeager Cabin	1.9	C2, D2, E2	Moderate	Travel Forest Road (FR) 104 for 1.3 miles to FR 413. Go southwest on FR 413 for .8 mile to Trail 28, then .1 mile to the trailhead.		Mainly used as a connection between Trails 28 and 533. This trail stays mostly in ponderosa pine habitat.
533 - Little Yeager	1.9	E-1-2	Moderate	Travel on Forest Road (FR) 104 to FR 413. Then go southwest on FR 413 for 2.2 miles to the junction with FR 132. From there, take FR 132 to FR 105 and travel on FR 105 for .4 mile past the Trail 111 trailhead to the trailhead for Trail 533.		Can be used with other trails to make a loop.

* The Woodchute Trail (Trail 102) is within Woodchute Wilderness. Mechanized and motorized equipment are not allowed in wilderness areas. Enjoy this area by horseback or on foot only—no bicycles are allowed.

As shown on the map, additional trail opportunities are in the area, but not described in the "Trails" table above. Please contact the ranger station at 928-567-4121 for more information about these trails.