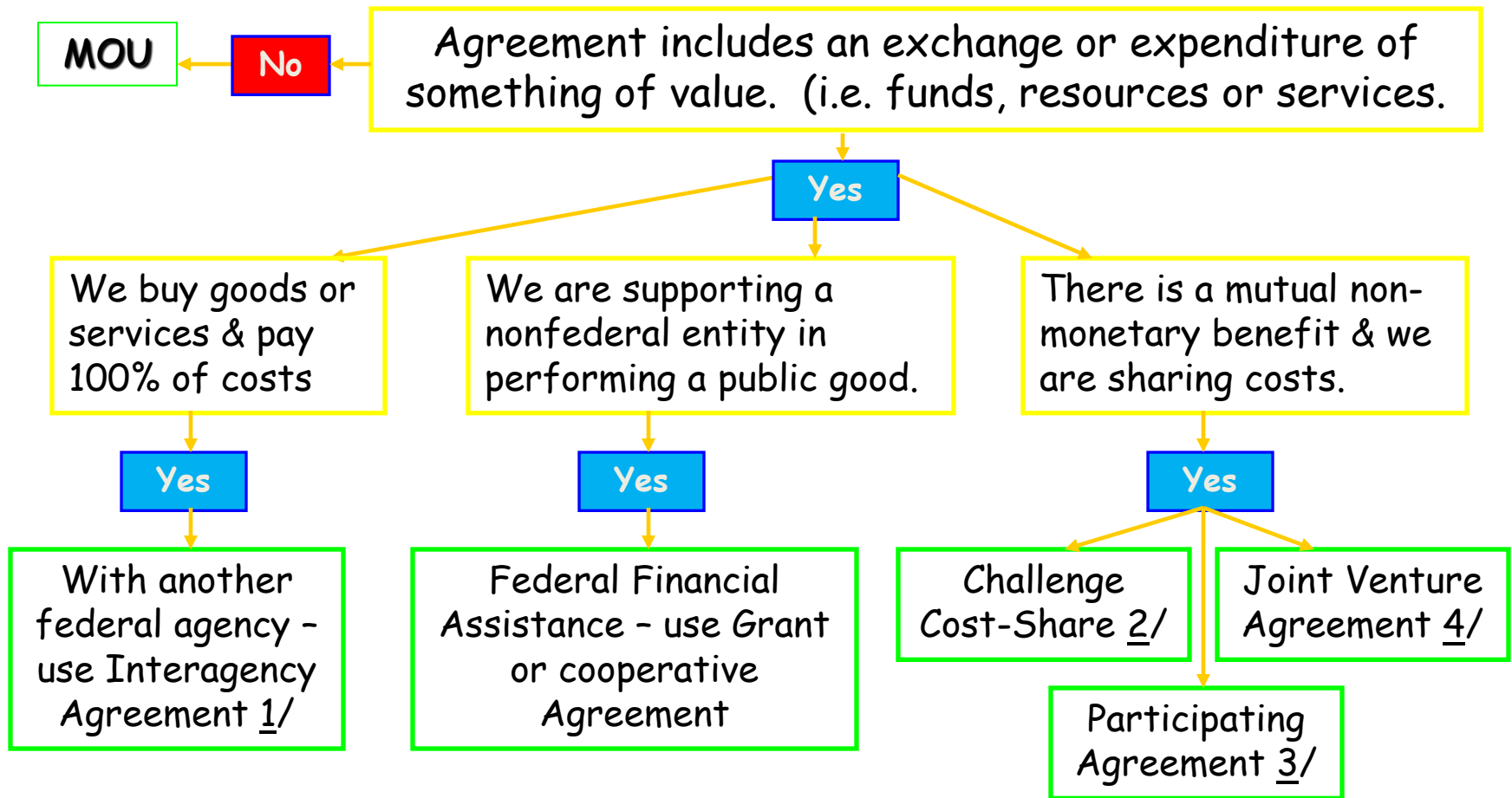


Decision Tree to determine the appropriate instrument for partnerships



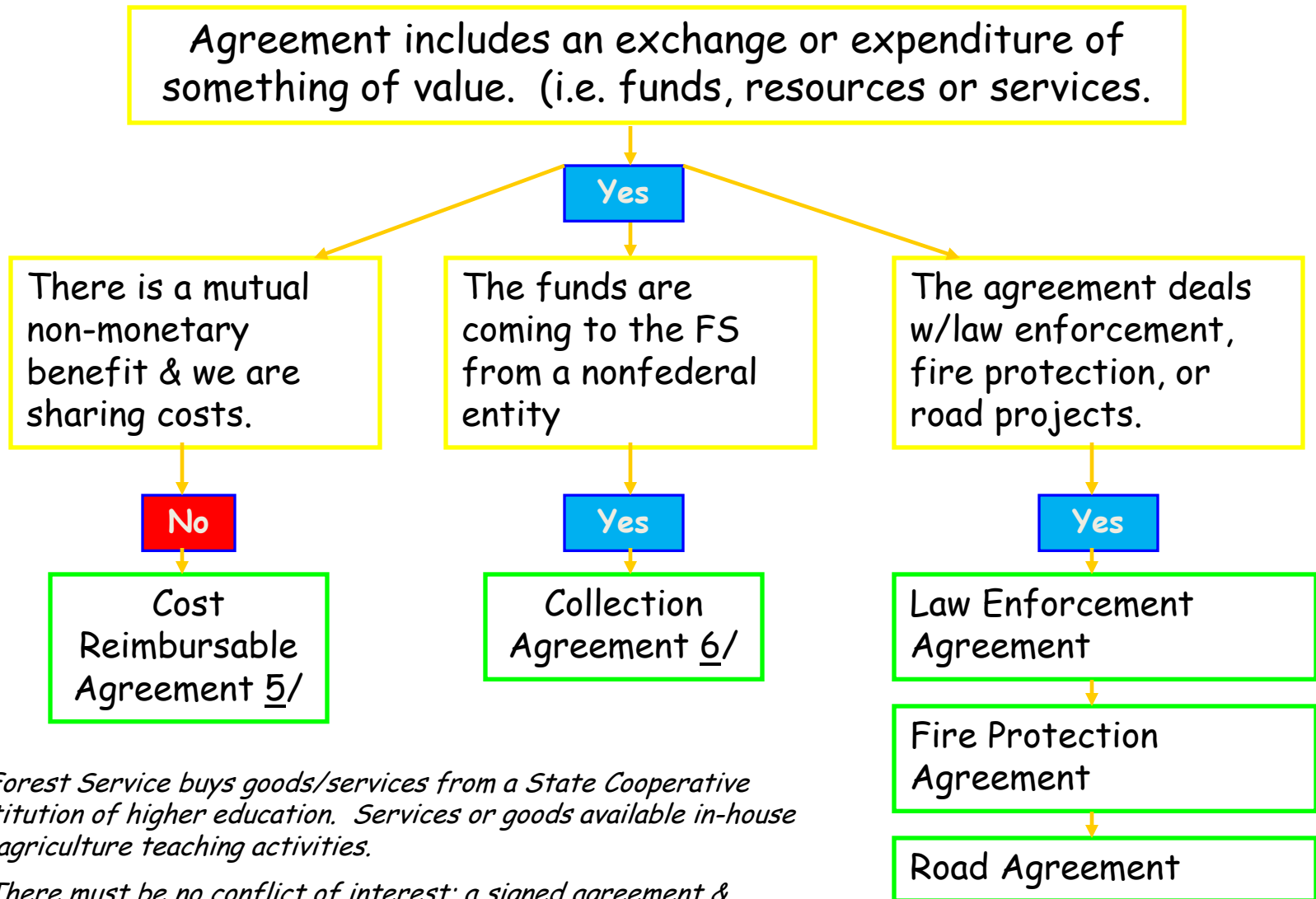
1/ Agreement can include funds going to or coming from another agency. Use procurement w/non-federal entity.

2/ Minimum 20% cost share; activity must be part of Forest Service Mission.

3/ Specifically for pollution abatement, manpower/job training, publication of forest history materials or forest protection. Minimum 20% cost share.

4/ Cooperator must contribute at least 20% of total cost; activities must include agriculture teaching activities at institutions of higher education.

Decision Tree continued



5/ Forest Service buys goods/services from a State Cooperative Institution of higher education. Services or goods available in-house for agriculture teaching activities.

6/ There must be no conflict of interest; a signed agreement & apportionment authority is needed prior to starting work.