

# Hellroaring Plateau & Glacier Lake

Trail Numbers  
3, 11, 103, & 106



**Custer Gallatin  
National Forest**  
Beartooth Ranger District

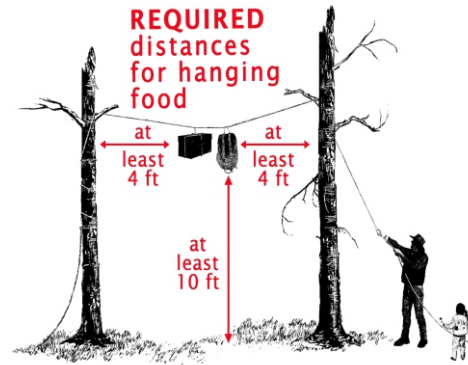


## Be Bear Aware

Please keep your camp clean and free of all attractants. This means all food and beverages, items with food odors (including garbage), toiletries and cosmetics, pet food and stock feed, and coolers.

Proper food storage is mandatory. This means that all food/attractants must be stored in a hard-sided vehicle, in the campground bear boxes, in a certified bear-resistant container, hung from a tree (see diagram), or protected by a product on the Interagency Grizzly Bear Committee's certified product list.

The **minimum fine** for leaving food or other attractants unattended is \$225. The **maximum fine** is \$5,000 or six months in jail.



**C  
O  
N  
T  
A  
C  
T**

**Beartooth Ranger District**  
6811 US Hwy 212  
Red Lodge, MT 59068  
406-446-2103  
**Billings Office**  
5001 Southgate Dr, Suite 2  
Billings, MT 59101



"Custer Gallatin National Forest"

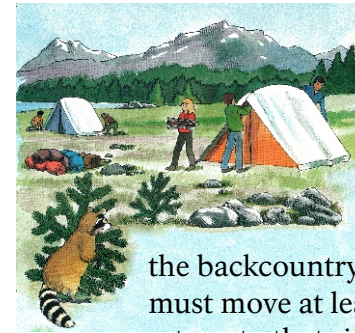
The United States Department of Agriculture (USDA) prohibits discrimination in its programs on the basis of race, color, national origin, gender, religion, age, disability, political beliefs, sexual orientation, and marital or family status. (Not all prohibited bases apply to all programs.) Persons with disabilities who require alternative means for communication of program information (Braille, large print, audiotape, etc) should contact USDA's TARGET Center at (202) 720-2600 (voice and TDD).

To file a complaint of program discrimination, write USDA Director, Office of Civil Rights, Room 326-W, Whitten Building, 14th and Independence Avenue, SW, Washington DC 20250-9410, or call (202) 720-5964 (voice and TDD). USDA is an equal opportunity provider and employer.

Created: April 2015

## Wilderness Regulations

### General Use



- **15 people is the maximum daily group size**
- 16 days at a camp site is the maximum camp stay limit within the backcountry. After this time, you must move at least 5 miles and not return to that site for 7 days

- **No camping/campfires within:**
  - 200 feet of a lake or
  - 100 feet of flowing water
- No use or possession of motorized vehicles, motorboats, chainsaws, bicycles, wagons, carts, hang gliders or other mechanized equipment
- **Dispose of human waste properly.** Either pack out waste and toilet paper or dig a hole 6-8 inches deep for disposal. Do not just cover with a rock
- Use Leave No Trace techniques for building a fire and fire rings. Please minimize your campfire impact
- Dropping/picking up material from aircraft and helicopters is prohibited
- **Food storage** order for wilderness travel means all food/attractants must be hung in a tree 10ft off the ground and 4ft from the trunk, in a certified bear-resistant container, or protected with a product found on the Interagency Grizzly Bear Committee Approved Bear Resistant Products List. [www.igbconline.org](http://www.igbconline.org)

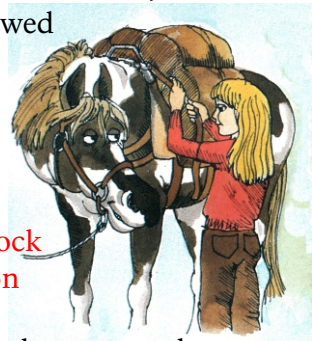


- No shortcutting on trail switchbacks
- Cannot cache or store equipment, personal property or supplies
- Natural and historical items must be left for others to discover
- Open fires are **PROHIBITED** in the Black Canyon drainage off of the Lake Fork Trail and in the Fossil Lake/Twin Outlets Lake area of the East Rosebud Trail

### Livestock:

- East Unit- 15 people/ 15 horses, no grazing allowed

- West Unit- 15 people/ 25 horses, grazing is allowed



- **Horses and pack stock are restricted on some trails:**
  - \* No stock allowed year-round on Woodbine Falls Trail (#93) and Glacier Lake Trail (#3)
  - \* No stock allowed on Basin Lakes Trail (#61) and West Rosebud Trail (#19), except during hunting season
- **No tying, tethering or picketing within 200ft of lakes and 100ft of flowing water**
- Feed (processed grain, cubed hay and pellets) must be certified weed free





# Glacier Lake Trail #3

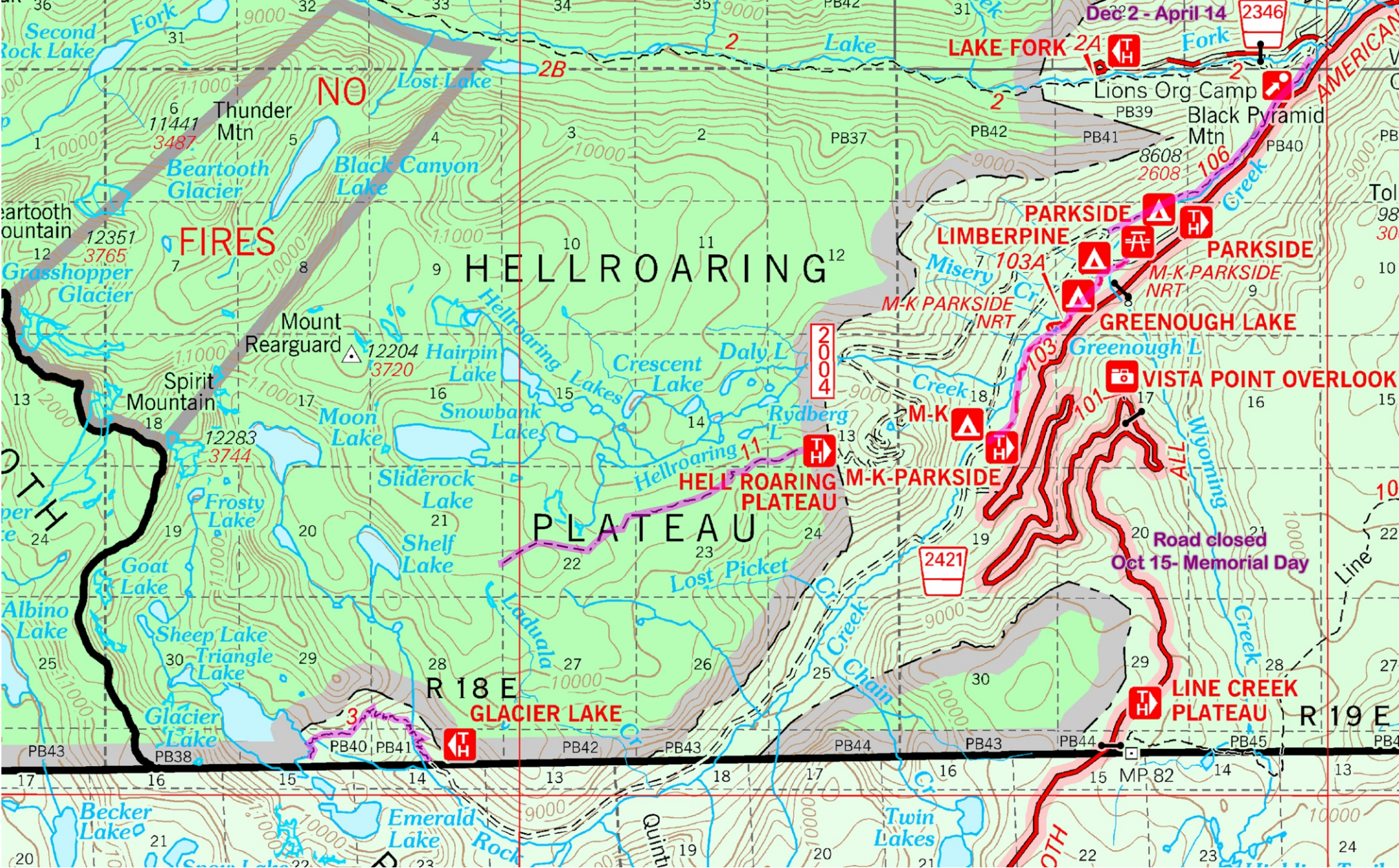
**Elevation:** 8,800- 10,500ft  
**Distance to:**  
Glacier Lake: 2.2 miles

**Directions from district office:**  
Drive south on US Hwy 212 towards Cooke City for 10.9 miles. Turn right onto the Main Fork Rock Creek Rd (FR #2421). Drive 0.9 miles past Parkside, Greenough and Limberpine Campgrounds. Turn left just have to Limberpine Campground to continue on the Main Fork Rock Creek Rd. Drive 7.7 miles to the trailhead.  
\*Please be advised that the Main Fork Rock Creek Rd is rocky with potholes. High clearance vehicles are advised.  
\*In previous years visitors to the Glacier Lake TH have returned from hiking to find that marmots had eaten important parts of their cars (wiring, break lines, etc). Please be aware of the possibility if you visit this area.

# Hellroaring Plateau Trail #11

**Elevation:** 7,202- 11,045ft  
**Distance to:**  
Plateau overlooking Shelf Lake: 2.5 miles

The trail is an old road and naturally ends at a steep talus slope overlooking Shelf Lake.  
**Directions from district office:**  
Drive south on US Hwy 212 for 10.9 miles. Turn right onto the Main Fork Rock Creek Rd (Forest Road 2421). Drive 0.9 miles past three campgrounds and bear to the right onto the Hellroaring Rd. Drive 5.6 miles to the trailhead at the end of the road.  
\*Please be advised that the Hellroaring Road is rocky with potholes. High clearance vehicles are advised.



## Parkside Trail #103

**Elevation:** 7,150- 7,500  
**Distance to:**  
Greenough Lake: 1.25 miles  
M-K Campground: 2.3 miles  
**Side Trail:**  
Greenough Campground to Greenough Lake: 0.2 miles

## Lower Parkside Trail #106

**Elevation:** 6,750-7,200  
**Distance from Lake Fork:**  
Hellroaring Rd junction: 2.2 miles  
The Lower Parkside Trail (#106) connects the Lake Fork Road to the Hellroaring Road. The main Parkside Trail (#103) connects Parkside and Greenough Lake Campgrounds to M-K Campground.

- Absaroka- Beartooth Wilderness Area
- National Forest Land
- Wilderness Boundary
- Trail