

# Silver Run Plateau Trails

Trail Numbers 8, 12, 35, 61, 64, & 102



**Custer Gallatin National Forest**  
Beartooth Ranger District

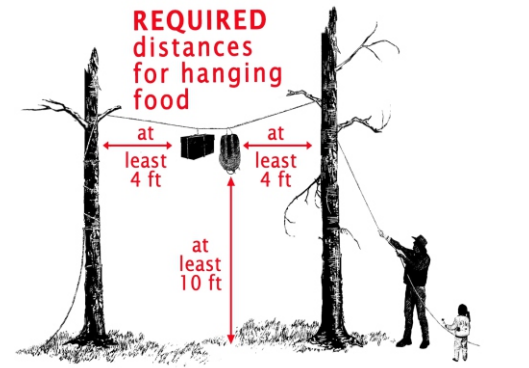


## Be Bear Aware

Please keep your camp clean and free of all attractants. This means all food and beverages, items with food odors (including garbage), toiletries and cosmetics, pet food and stock feed, and coolers.

Proper food storage is mandatory. This means that all food/attractants must be stored in a hard-sided vehicle, in the campground bear boxes, in a certified bear-resistant container, hung from a tree (see diagram), or protected by a product on the Interagency Grizzly Bear Committee's certified product list.

The **minimum fine** for leaving food or other attractants unattended is \$225. The **maximum fine** is \$5,000 or six months in jail.



**C  
O  
N  
T  
A  
C  
T**

**Beartooth Ranger District**  
6811 US Hwy 212  
Red Lodge, MT 59068  
406-446-2103  
**Billings Office**  
5001 Southgate Dr, Suite 2  
Billings, MT 59101



"Custer Gallatin National Forest"

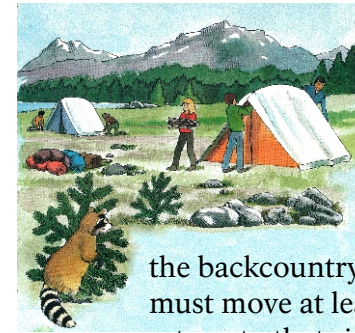
The United States Department of Agriculture (USDA) prohibits discrimination in its programs on the basis of race, color, national origin, gender, religion, age, disability, political beliefs, sexual orientation, and marital or family status. (Not all prohibited bases apply to all programs.) Persons with disabilities who require alternative means for communication of program information (Braille, large print, audiotape, etc) should contact USDA's TARGET Center at (202) 720-2600 (voice and TDD).

To file a complaint of program discrimination, write USDA Director, Office of Civil Rights, Room 326-W, Whitten Building, 14th and Independence Avenue, SW, Washington DC 20250-9410, or call (202) 720-5964 (voice and TDD). USDA is an equal opportunity provider and employer.

Created: April 2015

## Wilderness Regulations

### General Use



- **15 people is the maximum daily group size**
- 16 days at a camp site is the maximum camp stay limit within the backcountry. After this time, you must move at least 5 miles and not return to that site for 7 days

- **No camping/campfires within:**
  - 200 feet of a lake or
  - 100 feet of flowing water
- No use or possession of motorized vehicles, motorboats, chainsaws, bicycles, wagons, carts, hang gliders or other mechanized equipment
- **Dispose of human waste properly.** Either pack out waste and toilet paper or dig a hole 6-8 inches deep for disposal. Do not just cover with a rock
- Use Leave No Trace techniques for building a fire and fire rings. Please minimize your campfire impact
- Dropping/picking up material from aircraft and helicopters is prohibited
- **Food storage** order for wilderness travel means all food/attractants must be hung in a tree 10ft off the ground and 4ft from the trunk, in a certified bear-resistant container, or protected with a product found on the Interagency Grizzly Bear Committee Approved Bear Resistant Products List. [www.igbconline.org](http://www.igbconline.org)

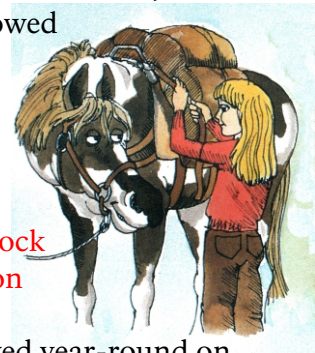


- No shortcutting on trail switchbacks
- Cannot cache or store equipment, personal property or supplies
- Natural and historical items must be left for others to discover
- Open fires are **PROHIBITED** in the Black Canyon drainage off of the Lake Fork Trail and in the Fossil Lake/Twin Outlets Lake area of the East Rosebud Trail

### Livestock:

- East Unit- 15 people/ 15 horses, no grazing allowed

- West Unit- 15 people/ 25 horses, grazing is allowed



- **Horses and pack stock are restricted on some trails:**
  - \* No stock allowed year-round on Woodbine Falls Trail (#93) and Glacier Lake Trail (#3)
  - \* No stock allowed on Basin Lakes Trail (#61) and West Rosebud Trail (#19), except during hunting season
- **No tying, tethering or picketing within 200ft of lakes and 100ft of flowing water**
- Feed (processed grain, cubed hay and pellets) must be certified weed free



**Bear Track Trail #8**

Elevation: 6,650- 10,600ft



Distance to:

Silver Run Plateau Trail (#64) junction: 5 miles

Timberline Trail (#12) junction: 12.5 miles

Bicycles are only allowed in non-wilderness area between Bear Track TH and Silver Run Plateau Trail junction.

Directions from district office:

Drive south on US Hwy 212 towards Cooke City for 8.4 miles. Turn right into the Bear Track Trailhead parking lot.

**Silver Run Plateau Trail #64**

Elevation: 7,140- 9,550ft



Distance to:

Ingles Creek Trail (#35) junction: 1.4 miles

Bear Track Trail (#8) junction: 3.1 miles

Directions from the district office:

Drive north on US Hwy 212 towards Red Lodge for .3 miles. Turn west (left) onto the West Fork Rd and drive 2.8 miles. Stay to the left (follow signs) and continue on the West Fork Rd. Drive 1.6 miles and turn left into the Silver Run parking lot. Cross the bridge and turn right onto forest road #2476. Drive 2 miles to the trailhead.

**Silver Run Trail #102**

Elevation: 6,500- 6,930



Distances:

Loop 1: 2.4 miles

Loop 2: 4.5 miles

Loop 3: 5 miles

Directions from district office:

Same directions for Silver Run Plateau Trail except when you cross the bridge, park in the parking lot.

**Basin Lakes Trail #61**

Elevation: 6,930- 8,995ft



Distance to:

Basin Creek Falls .5 miles

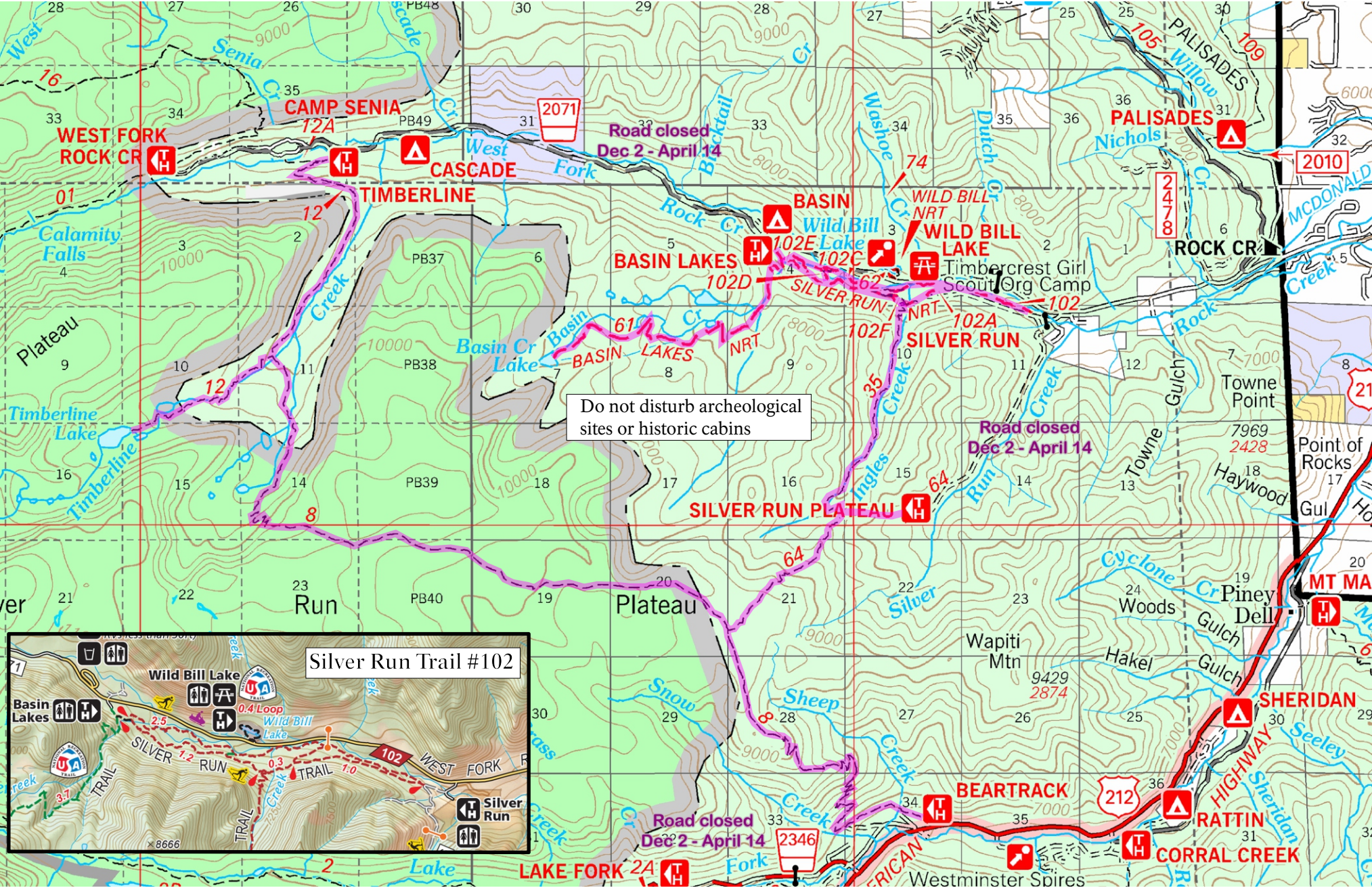
Lower Basin Lake 2.5 miles

Upper Basin Lake 4 miles

Directions from district office:

Drive north on US Hwy 212 towards Red Lodge for .3 miles. Turn west (left) onto the West Fork Rd and drive 2.8 miles. Stay to the left (follow signs) and continue on the West Fork Rd. Drive 4.1 miles to Basin Lakes trailhead on your left.

Horses allowed only during hunting season.



**Timberline Trail #12**

Elevation: 7,640- 9,640ft



Distance to:

Bear Track Trail (#8) junction: 3 miles

Lake Gertrude: 4 miles

Timberline Lake: 4.5 miles

Directions from district office:

Same directions for Basin Lakes, except that after you turn left to continue on the West Fork Rd, drive 8.3 miles to trailhead on left.

**Ingles Creek Trail #35**

Elevation: 7,000- 8,200ft



Distance to:

Silver Run Plateau Trail (# 64): 2.6 miles

Bear Track Trail (# 8) junction: 4.3 miles

Directions from district office:

Same directions to Silver Run Trail (#102). Walk up Silver Run Trail for 1.3 miles to the junction of Ingles Creek Trail.

