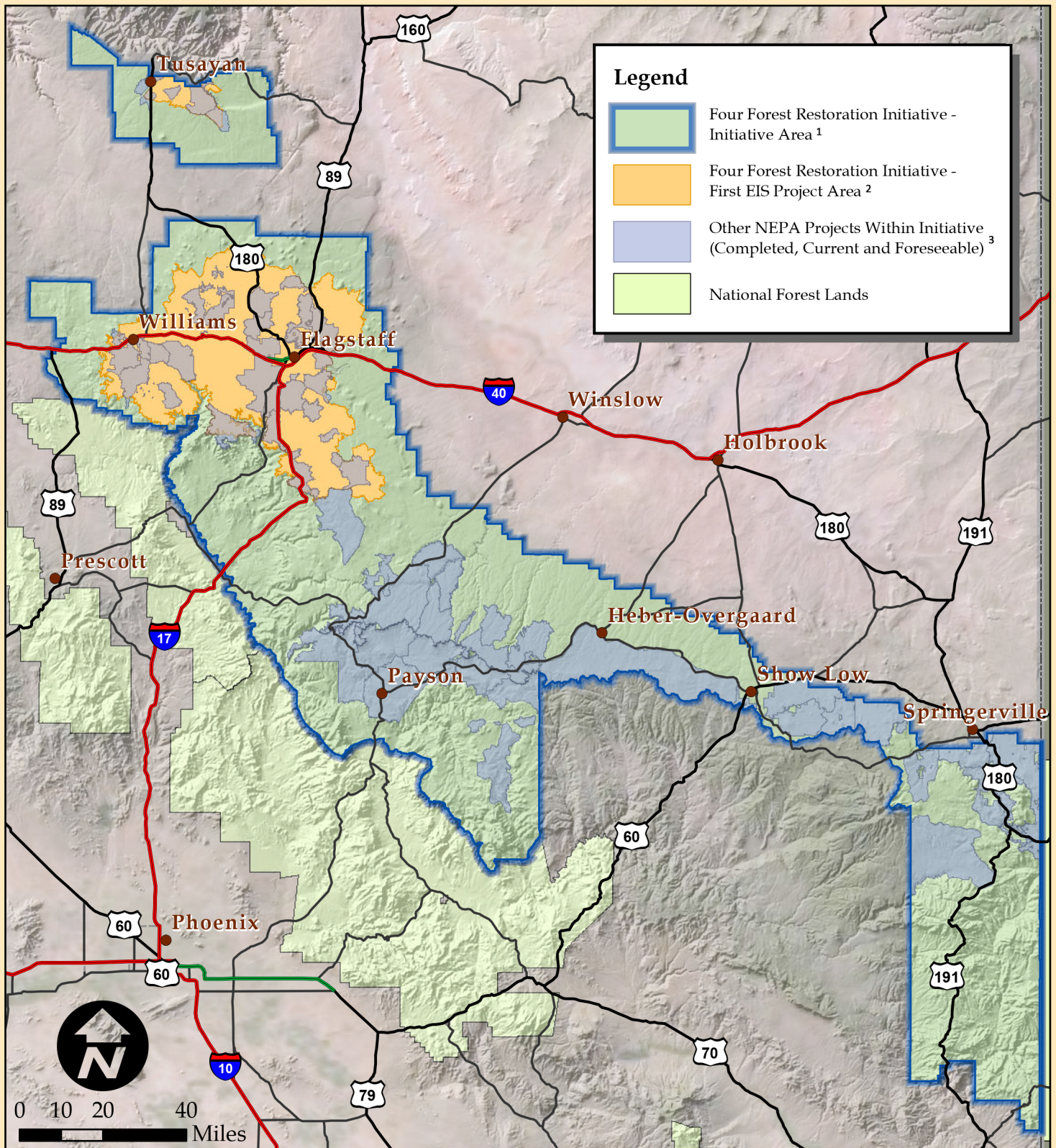


Four Forest Restoration Initiative - NEPA Projects



1. Also known as the “4FRI Footprint,” this 2.4 million-acre area is where the FS is increasing the pace and scale of restoration.

2. The FS completed the NEPA process for the 1st EIS in Spring 2015. The analysis area was almost 1 million acres; the final decision approved restoration activities on about 586,000 acres.

3. In this map, “completed, current, and foreseeable” refer to the NEPA process only.

[not pictured: future NEPA projects -- locations and sizes TBD]