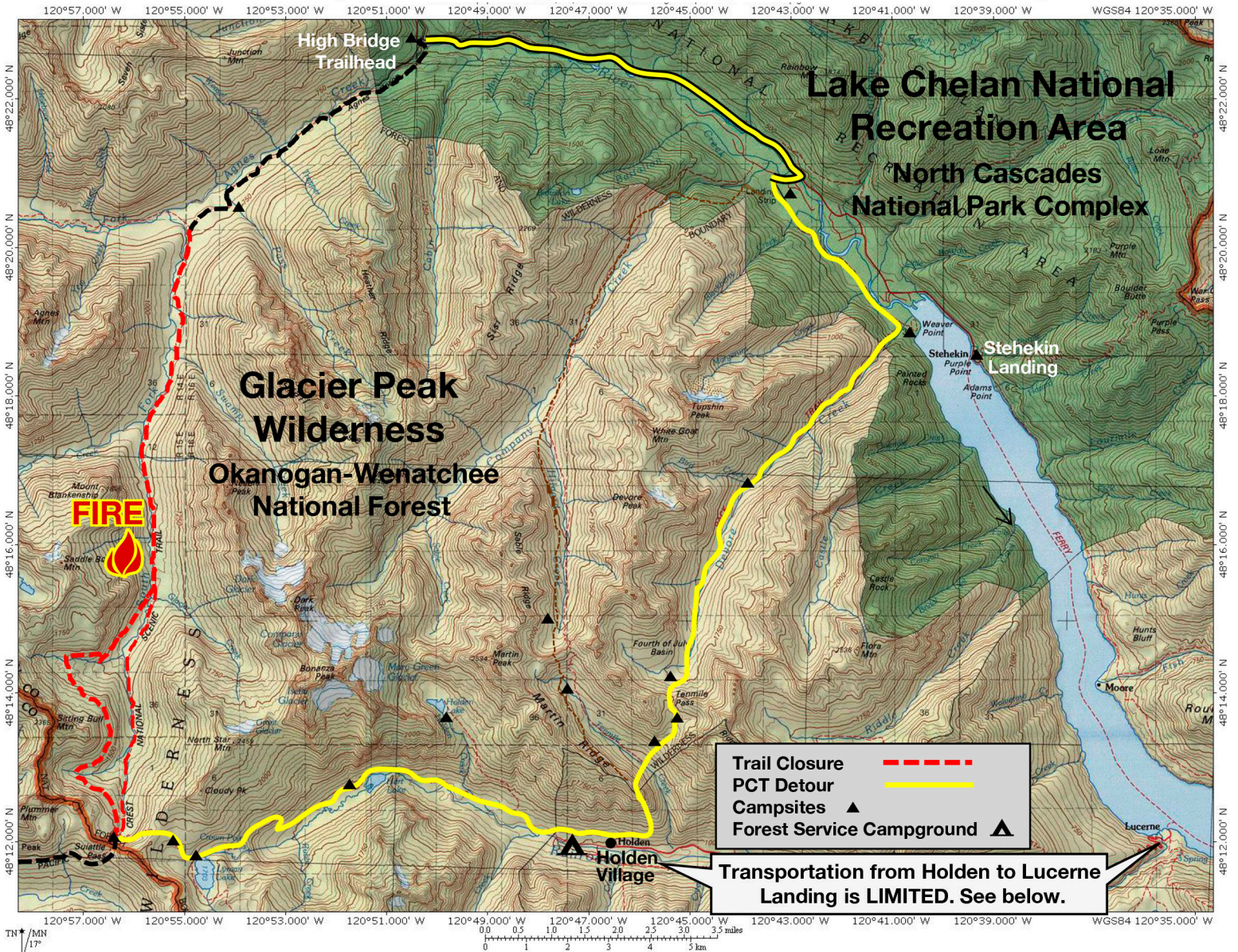




Pacific Crest Trail Fire Closure & Detour Route

PCT in Agnes Creek is CLOSED Public safety endangered by Blankenship Fire



Use the "PCT Detour" shown on map above to continue PCT through-travel. Detailed maps showing trail connection AROUND Holden Village are on Holden Trails boards and the trail is flagged. Camping is OPEN at the Forest Service Holden Campground, but Holden Village is closed to public use due to mine remediation. NO SERVICES ARE AVAILABLE AND TRANSPORTATION IS LIMITED TO SATURDAY AND SUNDAY TO LUCERNE LANDING ON LAKE CHELAN. Space is limited and transportation REQUIRES A RESERVATION.