

## Welcome to the Wayne

The Athens District of the Wayne National Forest (NF) has 14 trails open to hikers and backpackers. Hikers generally share these trails with other users. Trails are on both the Athens and Marietta units of the Athens District. Terrain on these trail systems varies from rolling hills and level ridgetops to some very challenging hills and steep slopes.

Depending upon the trail you choose to hike, you may encounter off-highway vehicles (OHVs), horses, or mountain bikes. Many trails intersect roads. Be mindful of traffic. If you bring your dog, it should be on a leash. Also use caution during hunting seasons. Blaze orange clothing is recommended during deer gun seasons.

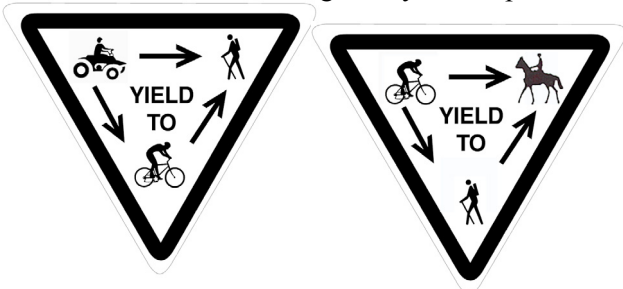
Trail use by OHVs, mountain bikes, and horses is prohibited from 12/16 through 4/14. Trail permits are required for these three uses of Wayne trails. Hiking is allowed on all trails even if the trail is closed to others users.

Many areas of the Wayne do not have cell phone coverage. Let someone know where you are going and when you plan to return.

### Yielding the Right of Way

Hikers need to be aware that on the OHV trails, though hikers have the right of way they will be aware these vehicles are coming well in advance. Listen for them, and on a blind corner you may wish to yield the trail to avoid accidents.

On trails shared with horses, please yield to horse-back riders by stopping and standing uphill from the trail. If you're wearing a large backpack, speak to the rider, so the horse recognizes you as a person.



## Contact Us

A detailed topographic map of our hiking trails is available at our offices.

The Wayne National Forest has three offices to serve visitors. Two are on the Athens District, one between Athens and Nelsonville, and the other in Marietta. Office hours are 8 - 4:30 Monday through Friday.

### Athens Ranger District

13700 U.S. Hwy 33  
Nelsonville, OH 45764  
Phone: 740-753-0101

### Marietta Unit Office

27515 State Route 7  
Marietta, OH 45750  
Phone: 740-373-9055

Federal relay system for the deaf and hearing impaired: 1-800-877-8339  
website: [www.fs.usda.gov/wayne](http://www.fs.usda.gov/wayne)



*USDA is an equal opportunity provider,  
employer, and lender.*



United States Department of Agriculture

## Wayne National Forest

# Hiking and Backpacking

on the

Athens Ranger District



**Forest  
Service**



FS-R9-025  
01/2016

# Athens Ranger District - Athens Unit

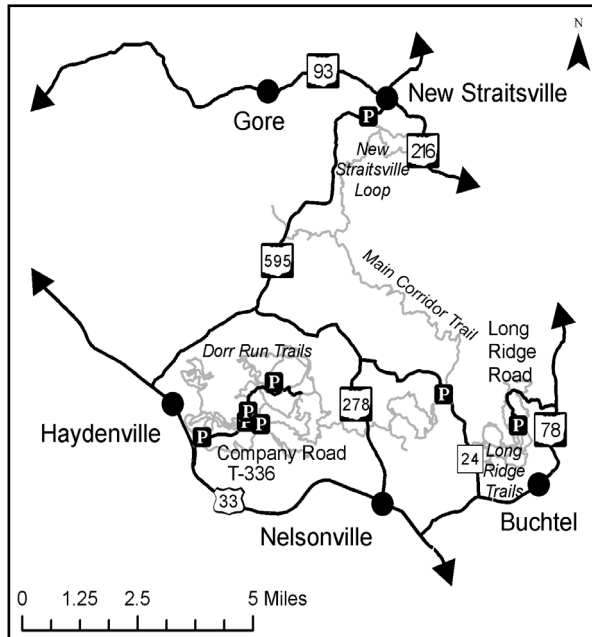
## Athens Unit:

- 84.5 miles - Monday Creek Off-Highway Vehicle (OHV) trails
- 51 miles - North Country Trail
- 21 miles - Stone Church Horse Trail
- 17 miles - Wildcat Hollow Trail
- 1 mile - Lake View Trail
- 0.5 mile - Ora E. Anderson Nature Trail (information on line)



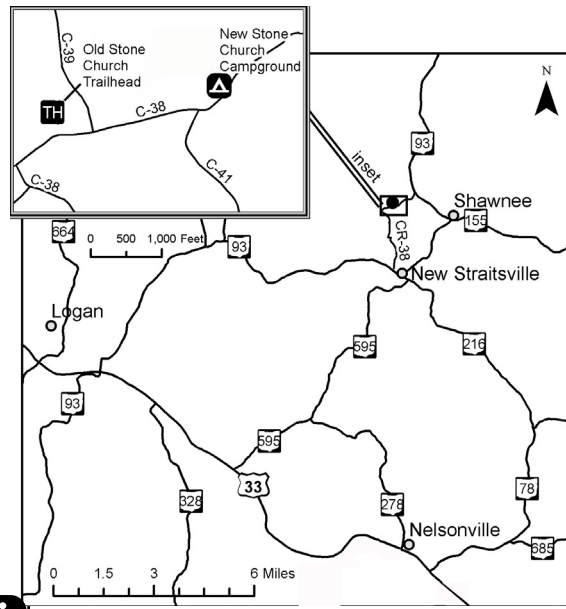
## Monday Creek OHV Trails

These 84.5 miles of trail cater primarily to OHVs, though hikers and mountain bikes are welcome. There are several trailheads to access these trails. More information and a topographic map of the trail system is available on the Wayne's OHV map.



## Stone Church Horse Trail

These 21 miles of trail cater primarily to horses, though hikers are welcome. Named for the skeletal ruins of an old stone church nearby, this trail system has both a campground and trailhead. Both are just off C-38 (Old Town Road). The Stone Church trailhead is just west of C-39 (Stone Church Hollow Road). There is no potable water at either facility. We recommend day users park in the trailhead as the campground is a fee area. This trail has 6.8 mi. colocated with the North County Trail with a 0.85 mile connector for a total of 30.16 miles.



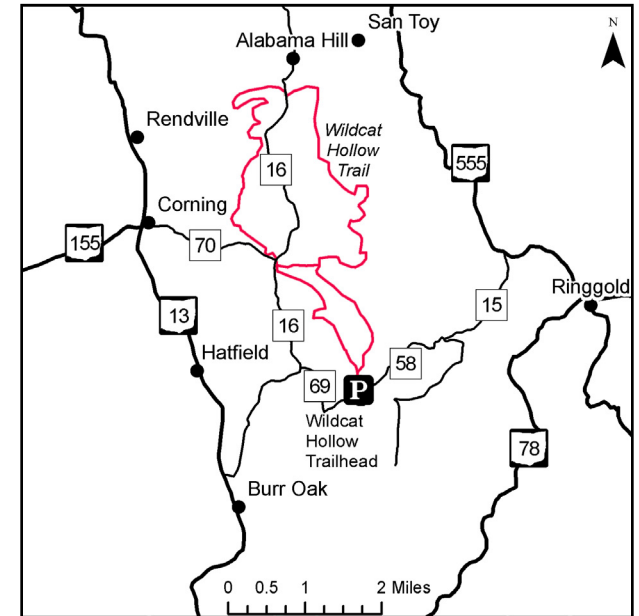
## Lake View Trail

This trail is part of the Burr Oak Cove Recreation Area. Located a half mile east of Highway 13, this is a small densely wooded campground on the north-west tip of Burr Oak Reservoir. The one mile Lake View Trail provides easy access from the campground to the scenic Burr Oak Reservoir.



## Wildcat Hollow Hiking Trail

This is one of the Forest's most popular trails, it offers two options; a 17-mile loop of scenic trail along ridge-tops and stream bottoms, and a short five mile loop for day hikes.



# Athens Ranger District - Athens Unit continued



## North Country/Buckeye Trail

There are 20.5 miles of the North Country Trail on the Athens District. It is co-located with the Buckeye Trail to total 51 miles. The trail crosses private land, and some of it is on roads. Stay on the trail and respect the rights of private landowners.

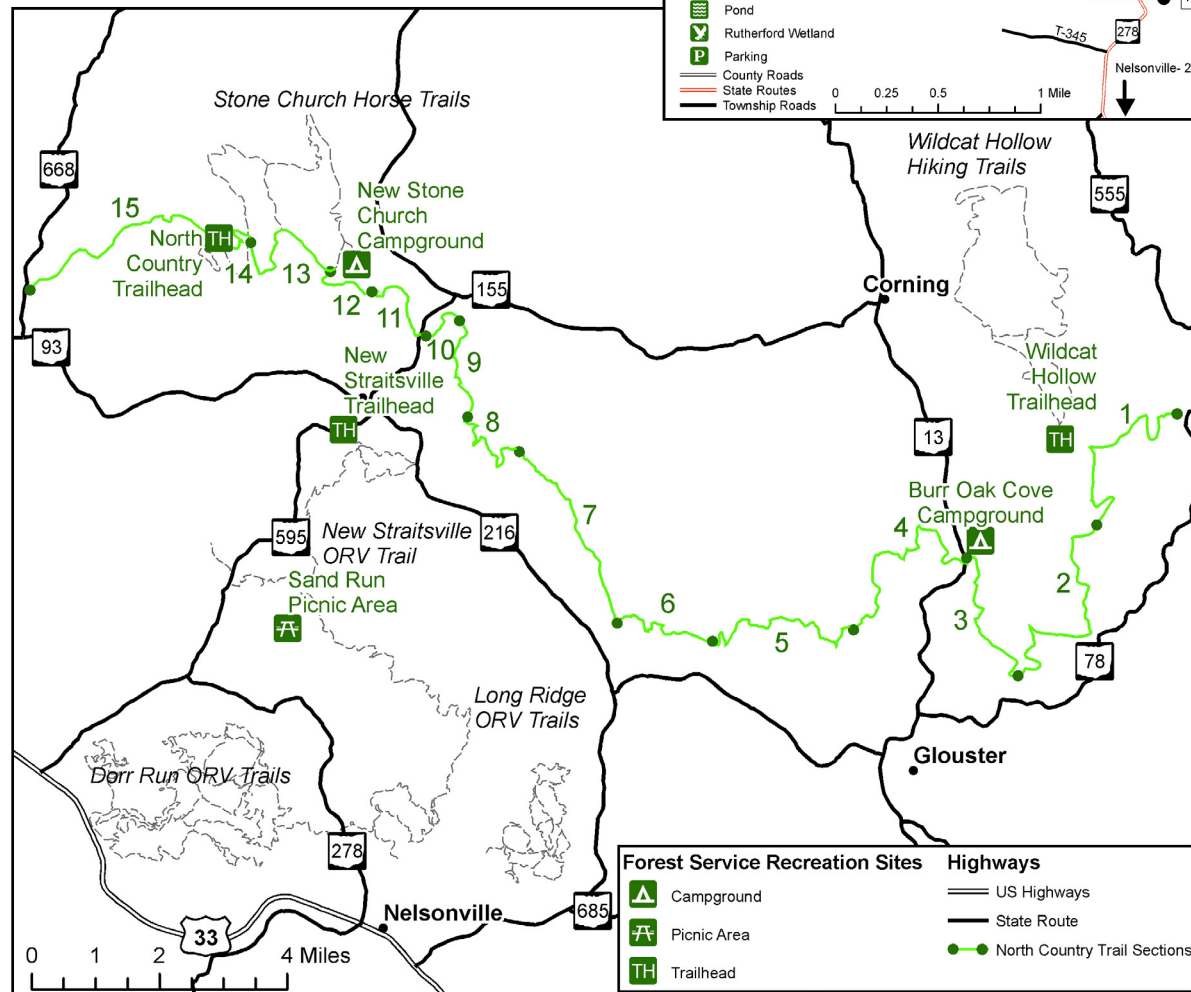
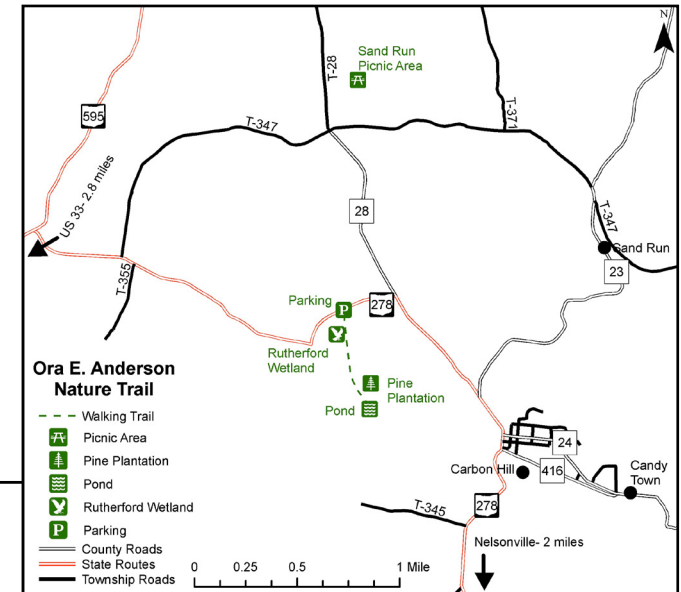
### Mileage Chart for Trail Sections

Section	Miles
1. Junction Hwy 78 to Vicksville	4.7
2. Vicksville to Bishopville	7.7
3. Bishopville to Hwy 13	3.3
4. Hwy 13 to McLeish	4.9
5. McLeish to Mud Fork	3.1
6. Mud Fork to Township Road (TR) 21	3.7
7. TR 21/TR 18 stretch	4.0
8. TR 18 to CR 17	2.6
9. CR 17 to Tecumsey Lake	2.2
10. Tecumsey Lake to Hwy 93	1.0
11. Hwy 93 to CR 41	2.0
12. CR 41 to CR 38	0.9
13. CR 38 to Forest Road 743 (This section co-located with horse trail)	3.4
14. Forest Road 743 to NCT trailhead (This section co-located with horse trail)	3.6
15. NCT Trailhead to Hwy 668 (Section currently on County roads)	3.9
<b>Total distance on Athens Unit</b>	<b>51.0</b>



## Ora E. Anderson Nature Trail

This 1/2 mile fully-accessible trail follows a historic railroad bed along the edge of the Rutherford Wetland. Interpretive signs provide interest along the path. Bring your binoculars to see wetland birds, beaver, and other wildlife.





# Athens Ranger District - Marietta Unit



## Marietta Unit Hiking Trails

Several trails are located in the rugged hills of the Marietta Unit .

- North Country Trail (NCT): 39 miles on the Marietta Unit of the Wayne NF allow for mountain bikes as well as hikers. North of Ring Mill, the trail follows roads.
- Archers Fork Trail: 11-mile loop off the North Country Trail
- Covered Bridge Trail: 5 miles of trail between Hune Covered Bridge and Rinard Covered Bridge.
- Covered Bridge/NCT Connector (Shay Ridge Trail): 3 mile connector trail between the Covered Bridge and NCT
- Lamping Homestead: There are two trails; a 3.5 and 1.5 loop trail around Lamping Lake.
- Ohio View Trail: 8.8 miles of trail from Highway 7 along the Ohio River up to overlooks above the river.
- Ohio View/NCT Connector (Shay Ridge Trail): 3.5 miles of trail between the Ohio View and NCT.
- Scenic River Trail: 4.4 mile trail from Leith Run Recreation Area to the NCT.



Kinderhook Horse Trail, has 16.5 miles of trail just north of US Highway 7 near Newport. At the trailhead off Dana Road, there is a vault toilet and a parking area but no potable water.

The location of each of these trails is shown on the map to the left.

