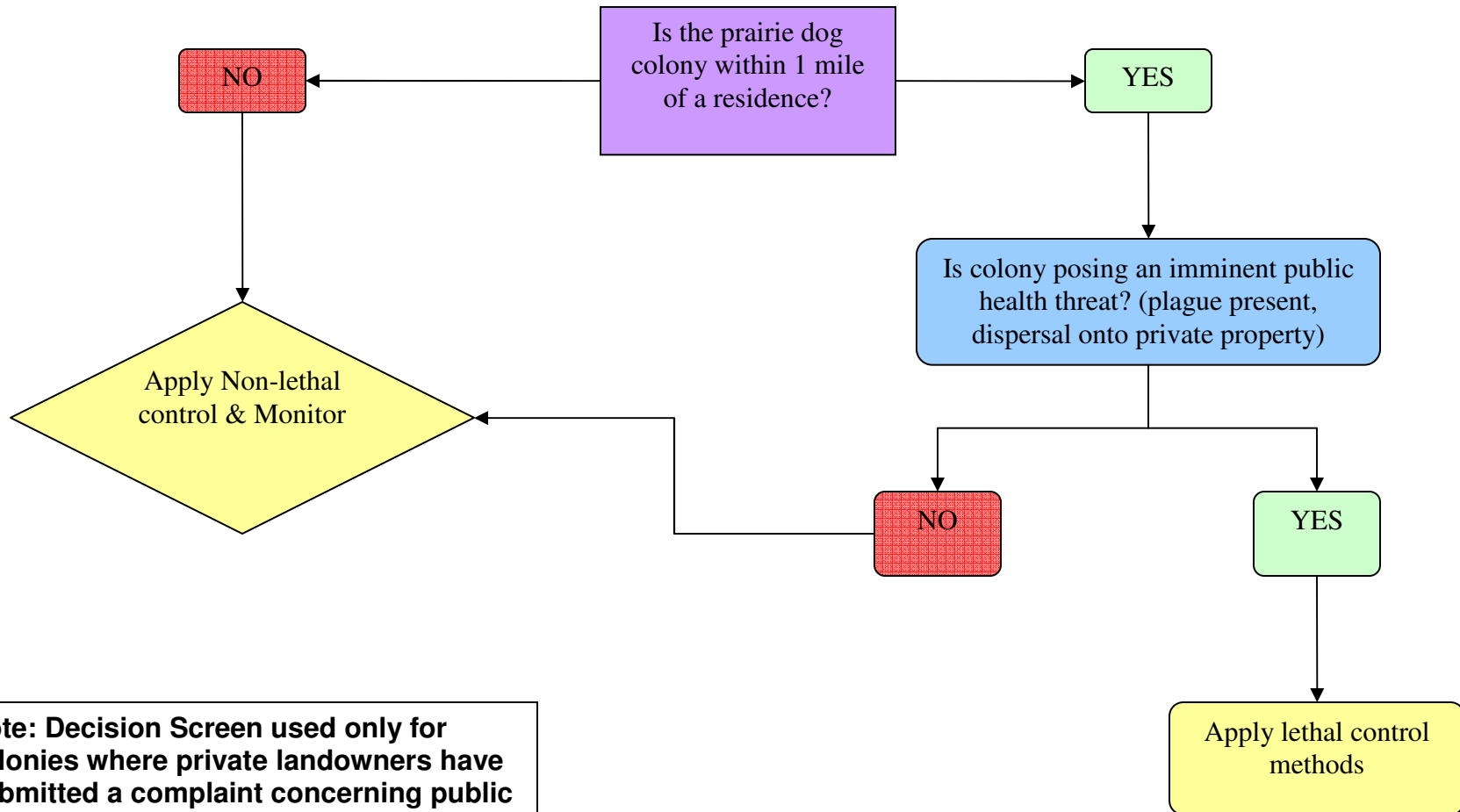


Alternative 1 (No Action)
DECISION SCREEN FOR THUNDER BASIN PRAIRIE DOG STRATEGY

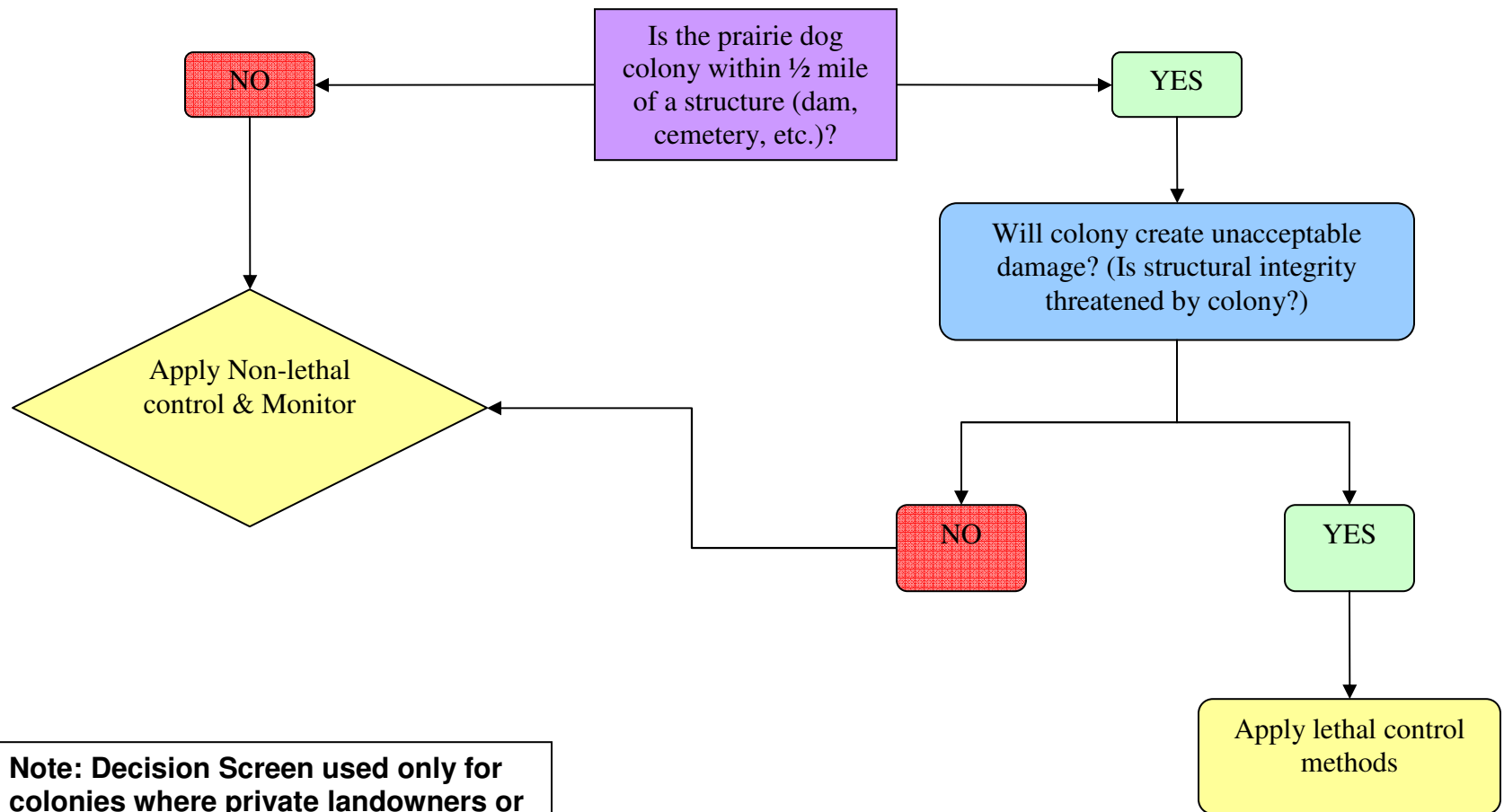
THREAT TO PUBLIC HEALTH – SCREEN 1



Note: Decision Screen used only for colonies where private landowners have submitted a complaint concerning public health.

Alternative 1 (No Action)
DECISION SCREEN FOR THUNDER BASIN PRAIRIE DOG STRATEGY

DAMAGE TO PUBLIC AND PRIVATE FACILITIES – SCREEN 2



Note: Decision Screen used only for colonies where private landowners or permitted users on NFS lands have submitted a complaint.