

Where is the Idaho City Trail System located?

There are four (4) Park N’ Ski lots beginning approximately 18-miles north of Idaho City on Hwy 21: Whoop-Um-Up, Gold Fork, Banner Ridge and Beaver Creek Summit. See map for locations.

Where do I find the latest trail conditions?

For current trail conditions, IDPR has a phone line that you can call: **(208) 514-2423**. This phone line is updated at the end of each grooming shift, usually Wednesday through Friday, December through mid-March.

When do you start grooming for the season?

We can begin grooming when there is at least a 24” base of snow. This snow depth provides the protection needed to groom safely over the uneven terrain and provides enough snow to fill in the large stream channels and depressions found throughout the trail system. On average, winter grooming usually begins sometime in December.

When does grooming end?

We typically wrap up the grooming season mid-March. By that time, snow conditions deteriorate, use declines, and funding is depleted.

How often do you groom?

Our goal is to groom all 26 miles of trails weekly. Grooming usually takes place Tuesday - Thursday. However, there are many circumstances that affect this schedule. Large amounts of new snowfall may necessitate the need to groom during a storm so new snow accumulations don’t overwhelm the capabilities of the equipment. At other times, it may be necessary to wait several days after a major snowfall for the snow structure to settle, allowing the equipment to proceed. **Bottom line, snow conditions dictate when and how often to groom.**

What type of grooming is performed?

Staff grooms a 10’ packed path with set ski tracks for traditional skiers.

How long does it take the operator to groom all the trails?

The groomer operator must first travel from Boise to the trail system, which under favorable road conditions, takes approximately 1 ½ hrs. His or her shift ends approximately 10-12 hours later. Grooming the entire system normally requires three days.

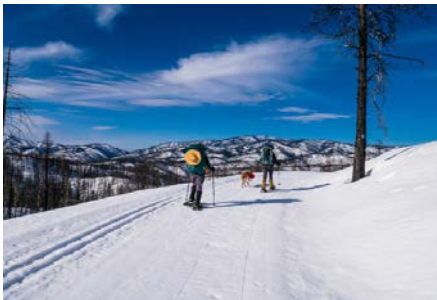


Photo Credit: Erik Ryan

What if ski trails don’t seem groomed?

Fresh snow can immediately blanket the groomed trails. Sometimes, equipment failure leads to down time waiting for servicing or parts. We do our best to keep up with the conditions, but please keep in mind that our current operating budget provides for three days of grooming per week, beginning in December and continuing through mid-March.

Do you have marked snowshoe trails?

Yes, we have created snowshoe specific trails throughout the system. We encourage snowshoers to use the trails at the Whoop-Um-Up Park N’ Ski area and the snowshoe trails at Banner Ridge, Beaver Creek Summit and Gold Fork areas.

Can I snowshoe on groomed trails?

Yes, although we encourage snowshoers to be considerate of skiers. Snowshoes leave “divots” behind when used on groomed trails. These divots can freeze and become a safety obstacle for skiers. Please stay off the set Nordic tracks and the center “skate ski lane” and walk single file when shoeing on groomed trails to keep destruction of the ski lanes to a minimum.

Can I fat bike on groomed trails?

Yes, but be courteous and do not ride on the set Nordic tracks. If you are leaving bike tracks deeper than 1/2” you should not be on the trail.

Can I Telemark / Snowboard?

The trails in the Idaho City area also provide access to long slopes of untracked powder for Telemark skiers and backcountry snowboarders. Try out the slopes at Banner Ridge and Beaver Creek Summit for untracked powder.

Are dogs allowed?

Yes! Park N’ Ski is very dog-friendly. You can take your dogs with you on all the Park N’ Ski area trails except for the groomed trails at Banner Ridge Park N’ Ski. Be respectful of others on the trail.

How is my permit and yurt money used?

Park N’ Ski pass and backcountry yurt revenue supports the entire Idaho City Yurt and Trail Program. The majority of the budget covers winter operations including trail grooming and the clearing of parking lots.

How often are parking lots plowed?

IDPR has an agreement with the Idaho Transportation Department (ITD) for plowing the parking lots. ITD’s first priority is keeping Highway 21 plowed open. Only after the road is safely opened can ITD begin clearing the Park N’ Ski lots. **Please be patient with the operators.** It is strongly recommended that you bring a snow shovel and tire chains when visiting any Park N’ Ski areas.

Winter Trail Etiquette

- ❄ Control your speed based on ability, terrain, visibility and traffic.
- ❄ Ski so as not to endanger others and keep poles close to body when other skiers pass.
- ❄ If you stop, please leave the track. In case of fall, clear track without delay. Any depression left in the snow should be filled with snow and leveled so as not to create a hazard for others.
- ❄ Do not walk, fat tire bike or snowshoe on ski tracks.
- ❄ On groomed trails, snowshoe opposite of set tracks, in single file.
- ❄ Keep to your right upon meeting an oncoming skier. A climbing skier should yield the right-of-way to a descending skier.
- ❄ A slower skier should step to the side of the track when being overtaken by a faster skier.

Important Phone Numbers

Medical Emergency: 911
Boise County Sheriff: (208) 392-4411
Idaho Parks and Recreation: (208) 334-4199
Idaho City Ranger District: (208) 392-6681
Idaho Transportation Department: 511
Idaho City Snow Groomer Report: (208) 514-2423



How can I make reservations at a Yurt?

Plan for an overnight stay in one of the six Idaho City Backcountry Yurts. View them online at www.parksandrecreation.idaho.gov. Reserve online, or call 1-888-922-6743.



Follow the Idaho Non-Motorized Trails Program on Facebook for news and information.

Volunteer

Many special events are held each year to improve the trails and yurt system in the Idaho City Area. If you are interested in helping, contact IDPR at: (208) 514-2493.

This agency’s programs and activities are operated free from discrimination on the basis of race, color, religion, national origin, gender, age or disability. Any-one who believes they have been discriminated against or who needs further information regarding discrimination should write: Idaho Department of Parks and Recreation, PO Box 83720 Boise ID 83720-0065, or National Park Service, Equal Opportunity Officer (010) PO Box 31127, Washington DC 20013. Costs associated with this publication are available from the Idaho Department of Parks and Recreation in accordance with Section 60-202, Idaho Code. HB366: 04/15/M/5000/PCA27319.

Winter Safety Tips

- ❄ To keep warm, dry and comfortable; wear fleece, wool or wicking clothing.
- ❄ Avoid danger by skiing in areas where you are capable of skiing safely.
- ❄ Ski in recommended direction of travel.
- ❄ Never ski alone and tell/show friends or family where you plan to go. Also, tell them when you expect to return.
- ❄ Plan your trip according to the weakest skier’s ability.
- ❄ Stay tuned to local weather forecasts.
- ❄ Avoid avalanche areas by staying on marked trails.

I know there’s a fee to use the trails, but how can I buy a Park N’ Ski permit?

Now you can go online to purchase an annual permit (the fee is \$25 for a windshield sticker that will be mailed to you). A one to three day temporary permit can be purchased for just \$7.50. This permit can be printed and placed on your dashboard. Both permits can still be purchased from vendors. A list of locations is available at: www.parksandrecreation.idaho.gov. Visit ‘Registration & Permits’ and Nordic Vendors.

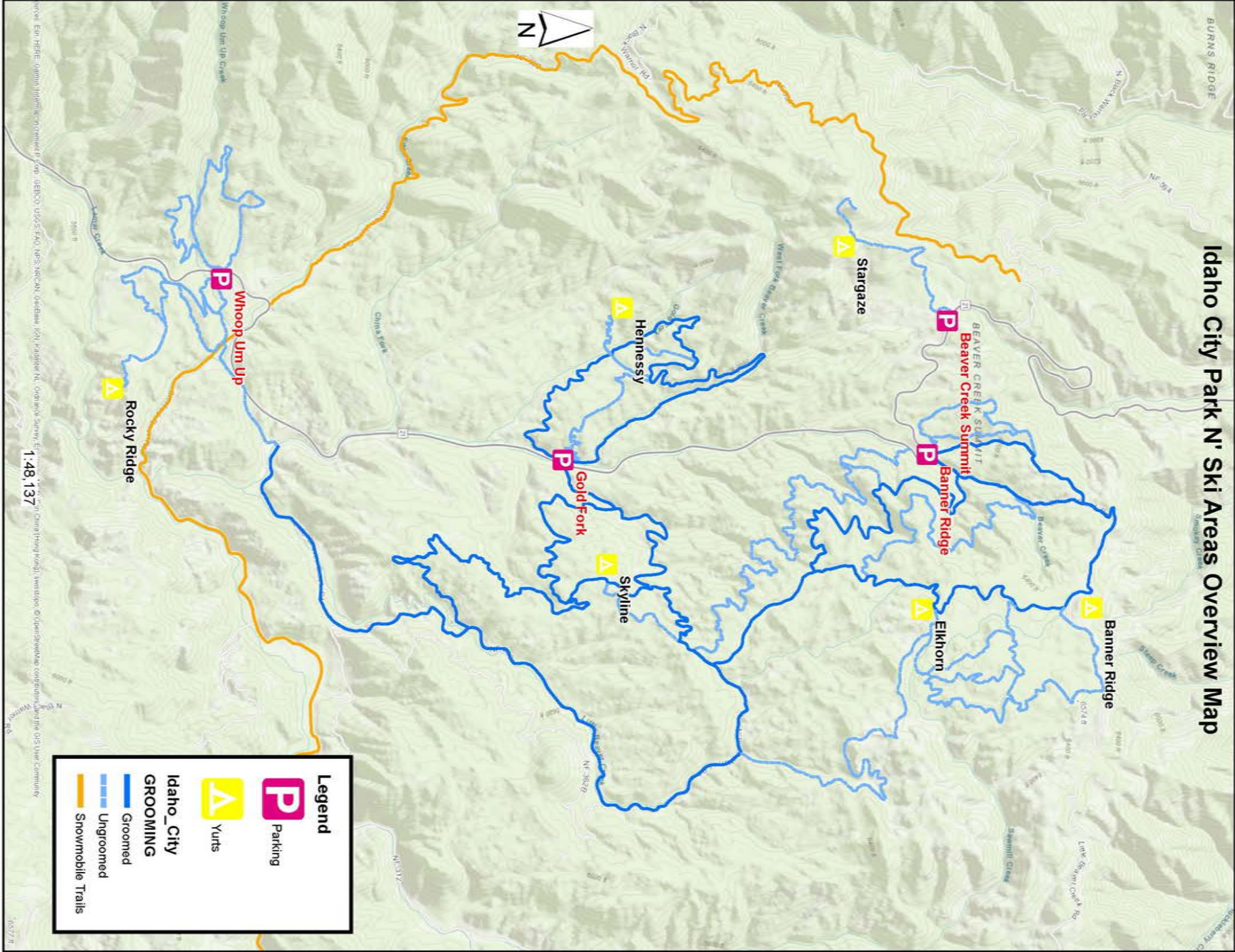


General

As you enjoy the Idaho City Area trail and yurt system, please keep in mind that you are responsible for injury to yourself and other persons, and damage to property that results from the inherent risks of skiing and snowshoeing.



The Idaho City Backcountry Yurts and area trails are managed in partnership with the United States Forest Service.



More detailed maps are available for download at: <http://parksandrecreation.idaho.gov/activities>

IDAHO CITY AREA
PARK N’ SKI

MAP / FAQ



WWW.PARKSANDRECREATION.IDAHO.GOV