

**Excerpt 2 of 6:** Slides 19-32 of 144 total presented March 10, 2011  
National public forum, 2011 proposed FS planning rule.  
The complete presentation and all excerpts are available at:  
<http://www.fs.usda.gov/goto/planningrule/forums>



# PROPOSED PLANNING RULE SECTION BY SECTION REVIEW

Materials were condensed for this presentation. For more details, see <http://www.fs.usda.gov/goto/planningrule/faqs>

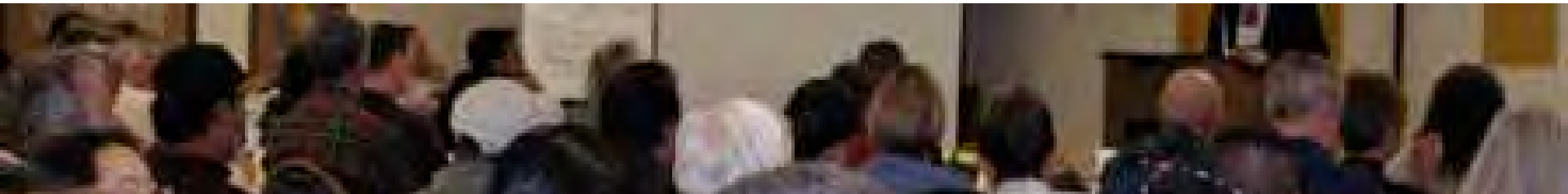


## § 219.4 Requirements for Public Participation

# Public Participation Early and Often



- Desired participation throughout the process
  - ✧ The assessment process
  - ✧ Developing a plan proposal
  - ✧ Developing monitoring program
  - ✧ Commenting on the proposal
  - ✧ Reviewing the results of the monitoring information

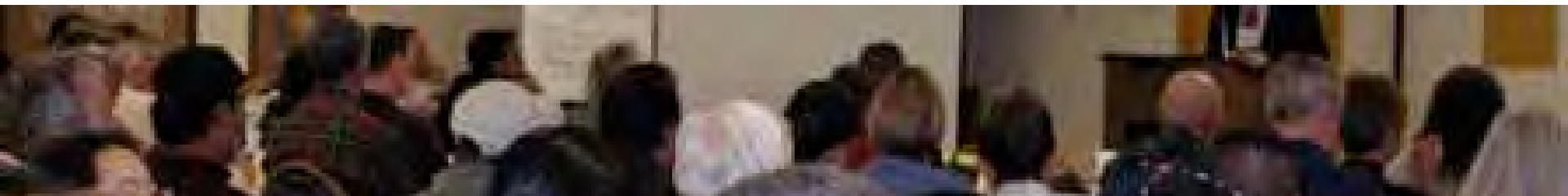
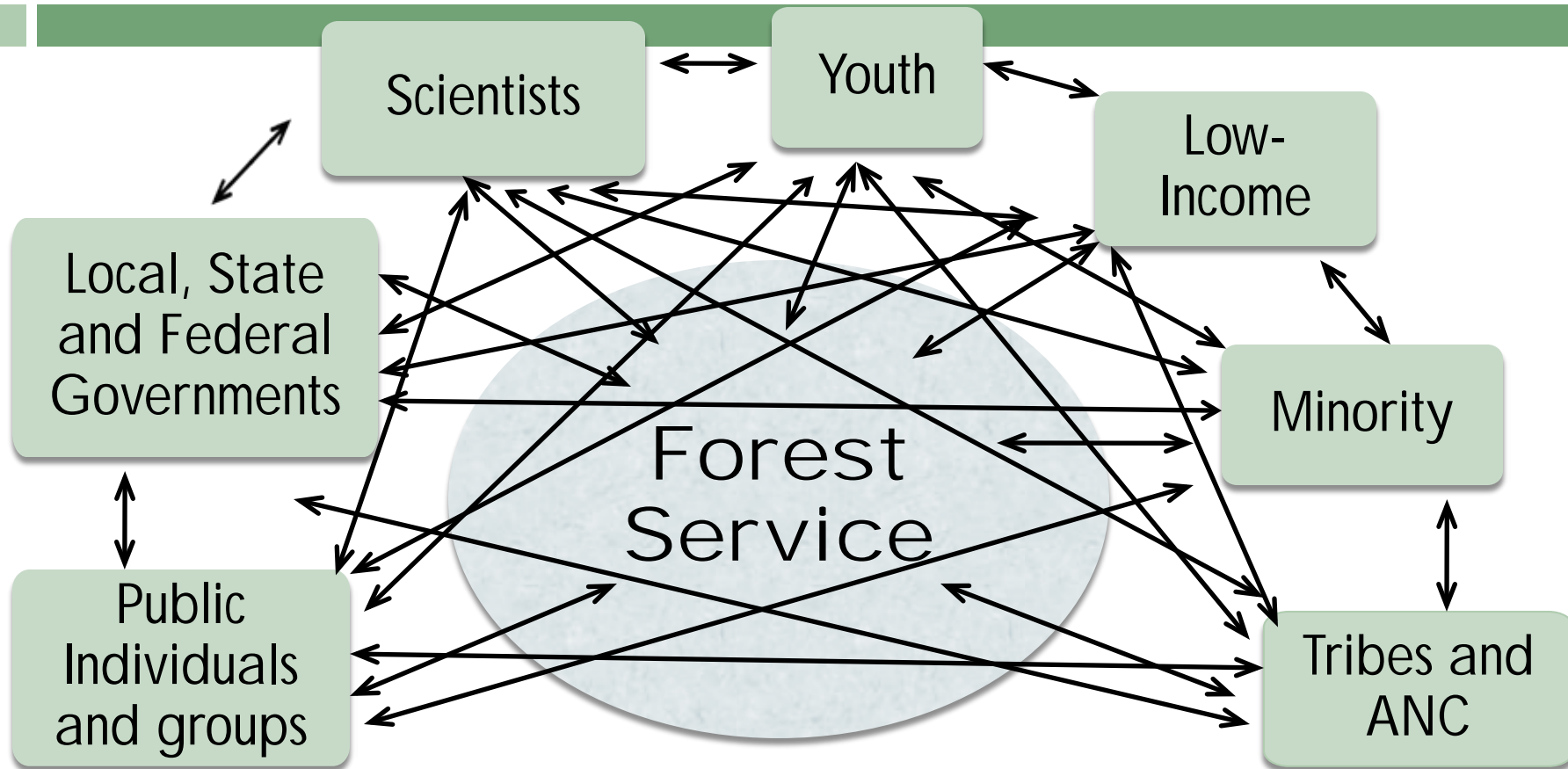


# Public Notification



- .. Public notification is required:
  - ✧ To begin preparation of an assessment
  - ✧ Initiate development of a proposed plan/revision/amendment
  - ✧ Invite comments on a proposed plan/revision/amendment
  - ✧ Begin objection period
  - ✧ Approve final plan/revision/amendment

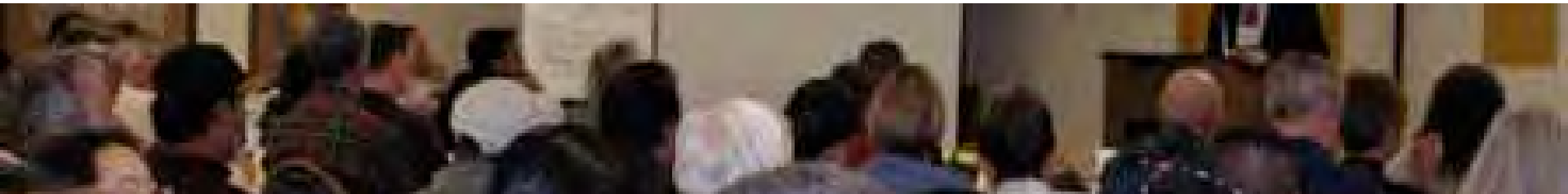
# Engaging the Public



# Other Planning Efforts



- Review land use policies of tribes and federal, state and local government
  - ✧ Review assessments conducted by other agencies
  - ✧ Consider objectives of Tribes and local, state governments and other federal agencies
  - ✧ Consider the compatibility and inter-related impacts
- The results of the review shall be displayed in the Forest Plan revision environmental impact statement







## § 219.3 Role of Science in Planning

Materials were condensed for this presentation. For more details, see <http://www.fs.usda.gov/goto/planningrule/faqs>

# Science Informs Planning



Ecological  
Science

Economic  
Science

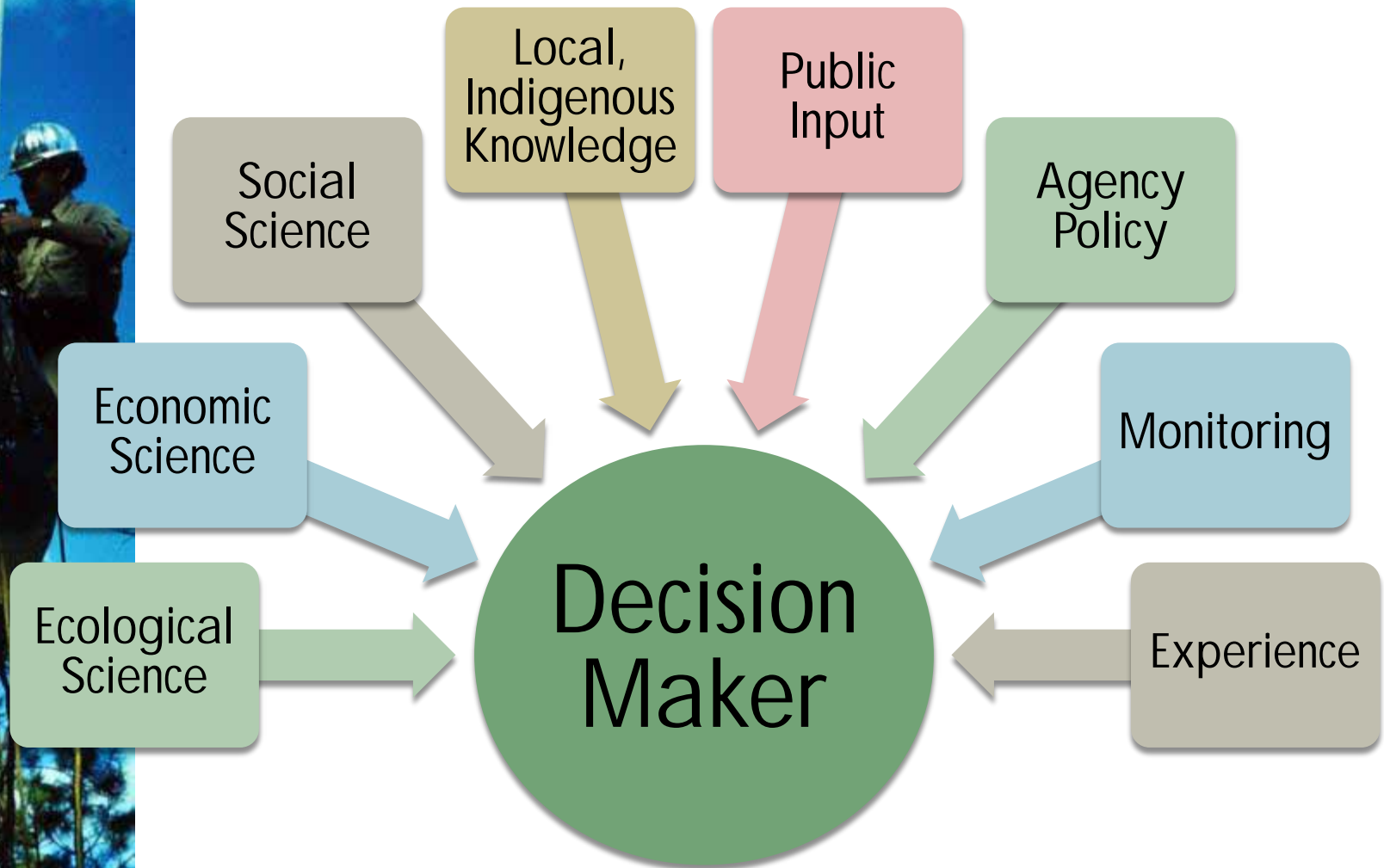
Social  
Science

Decision  
Maker





# Science Informs Planning



# Best Available Scientific Information



- Most Accurate, Reliable, and Relevant
  - ✧ Developed using the scientific method
  - ✧ Analysis of data
  - ✧ Studies to address a specific question
  - ✧ Expert opinion
  - ✧ Panel consensus
  - ✧ Observations



# Documentation



- Plan decision document, assessment report, and monitoring evaluation
  - ✧ Identify sources of information
  - ✧ Describe how social, economic, and ecological science were interpreted and applied
  - ✧ Describe how information was determined to be most accurate, reliable, and relevant
  - ✧ Describe how findings or conclusions were used to develop plan components

# Role of Scientists



- Scientists are involved throughout the planning process
  - ✧ Assessment
  - ✧ Monitoring
  - ✧ Public participation
  - ✧ Sustainability
  - ✧ Diversity of plant and animal communities

# Example



## Colville National Forest





Q&A