

**Excerpt 4 of 6:** Slides 65-87 of 144 total presented March 10, 2011  
National public forum, 2011 proposed FS planning rule  
The complete presentation and all excerpts are available at:  
<http://www.fs.usda.gov/goto/planningrule/forums>



## § 219.7 Plan Development or Plan Revision

Materials were condensed for this presentation. For more details, see <http://www.fs.usda.gov/goto/planningrule/faqs>

# Process Requirements



1. Public Notification
2. Public Engagement
3. Assessment Review
4. Proposed Plan Development
5. EIS Development
6. Objections
7. Plan Approval

# Plan Components



## Required

- .. Desired Conditions
- .. Objectives
- .. Standards
- .. Guidelines
- .. Suitability of Areas

## Optional

- .. Goals

The Plan must identify where plan components apply:

- .. Management Areas
- .. Geographic Areas

# Plan Components



## Desired Conditions

- Identify an overall and shared vision for the unit

## Objectives

- Identify intended measurable progress toward the desired condition

## Goals (Optional)

- Conveys a broad statement of intent

# Plan Components



## Standards

- Mandatory constraints that do not allow for deviation

## Guidelines

- Constraints that allow for some flexibility as long as the guideline intent is met

## Suitability

- Identify specific areas as suitable or not suitable for specific uses and activities
- Site-specific and NEPA analysis still needed for specific uses

# Other Plan Content



## Other Required Content

- Monitoring program
- Identification of priority watersheds
- Describe unit's distinctive role
- Proposed and possible actions

## Optional Content



## § 219.13 Plan Amendment and Administrative Changes

Materials were condensed for this presentation. For more details, see <http://www.fs.usda.gov/goto/planningrule/faqs>



# Plan Amendments



- Required to change plan components
- Based on a documented need to change the plan
  - ✧ Assessment, monitoring report, project analysis, or other documentation
- Must provide opportunity for public participation
- Must be consistent with Forest Service NEPA procedures



# Administrative Change



- Administrative changes are allowed for:
  - ✧ Corrections of clerical errors of any part of the plan
  - ✧ Changes to plan content that are not part of the plan
  - ✧ Conformance to laws or regulations
- Public Notice must be provided
- Change to monitoring program requires consideration of public concerns and comments

# Example



## Providing for Future Old Forest in Harvested Eastern Forest

Desired Condition for Allegheny National Forest includes:

- Late structural stages located in core areas and linkage areas comprise between 28 to 35 percent of the forest landscape.

# Current Situation

---

- 82% of Allegheny NF is in even aged hardwood stands between 50-100 years of age.





Remainder of the  
forest is in  
remnant old forest  
or



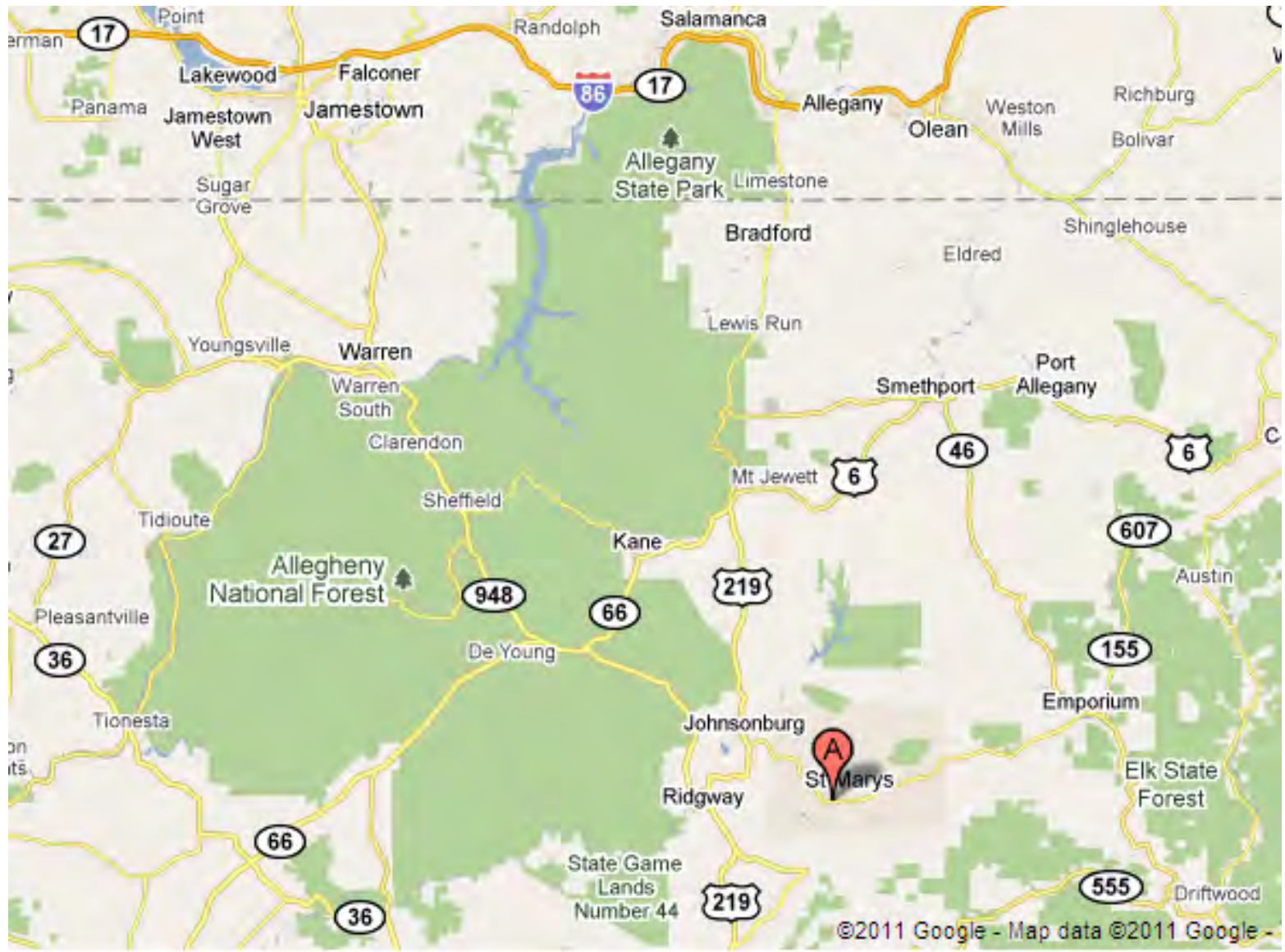


# Growing young forest





# Provide connections to other public lands conserving older forest conditions

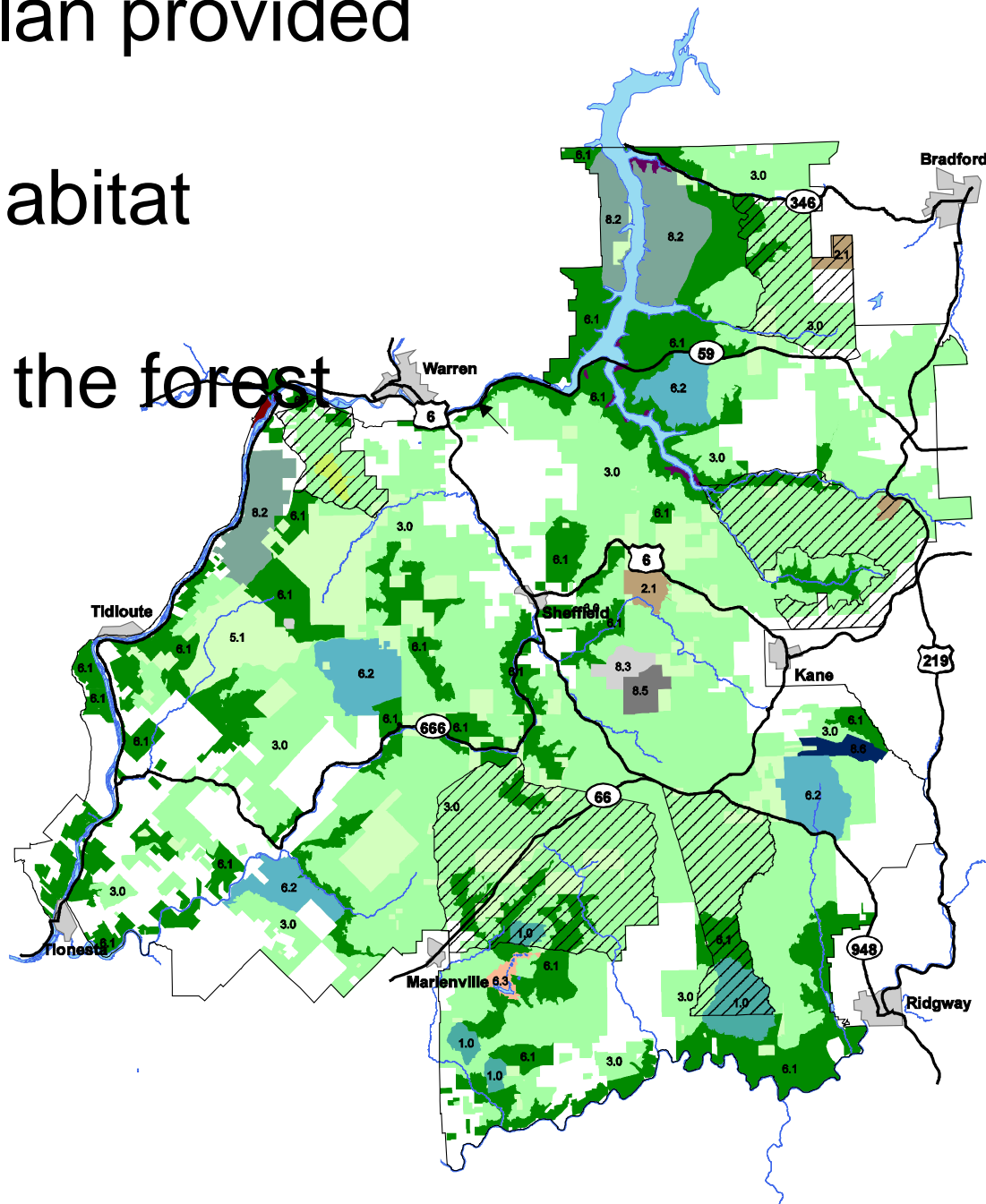


provided

at

forest

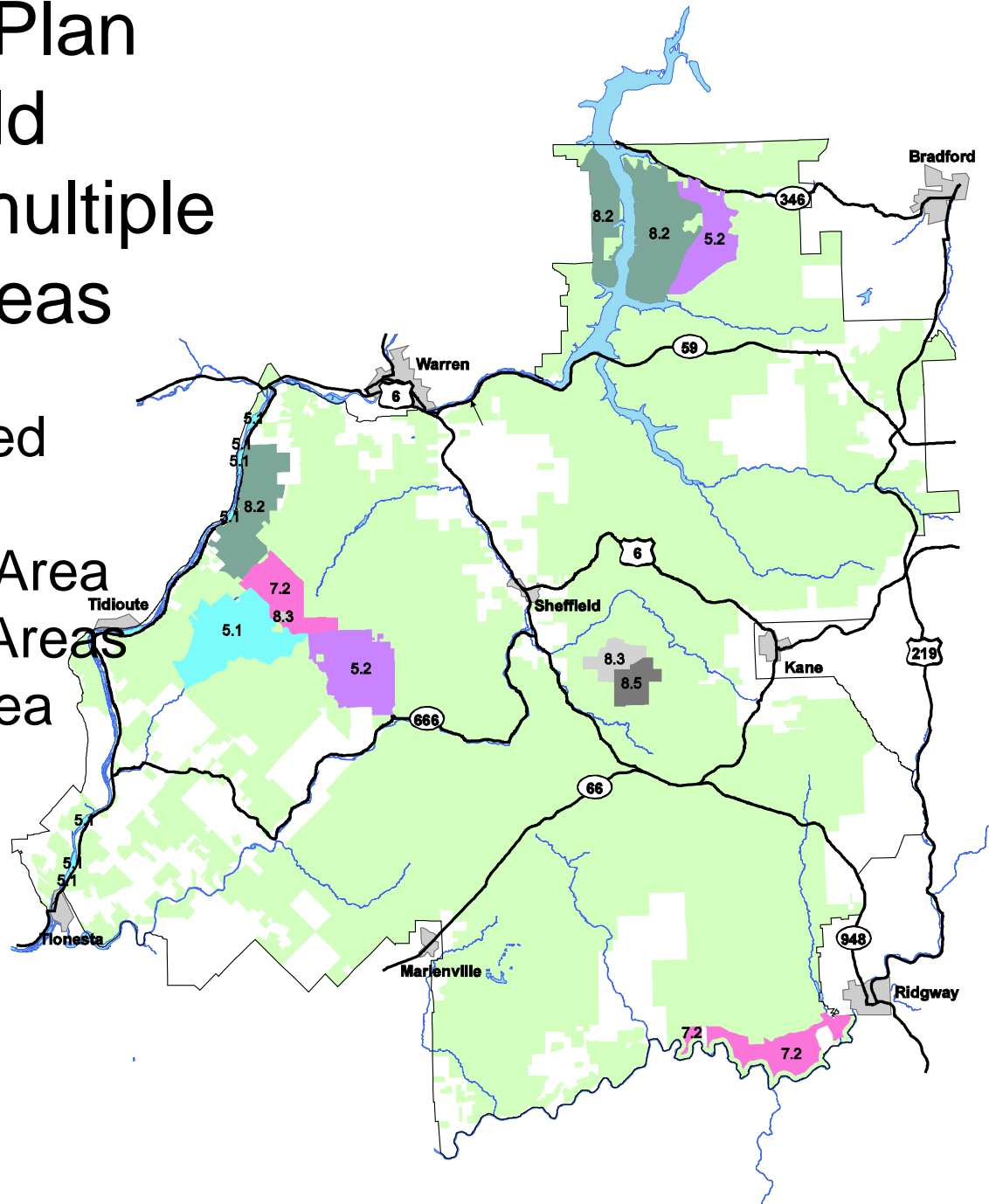
The map displays the Marquette National Forest, characterized by a dense network of green areas representing forest cover. The forest is interspersed with roads, including major routes like US-6, US-59, US-219, and US-948. Towns such as Warren, Sheffield, Kane, Marleville, and Ridgway are marked. The map also shows various water bodies, including lakes and rivers, and different land use patterns indicated by hatching and shading. Numerical values (e.g., 8.2, 6.1, 3.0, 1.0) are scattered across the map, possibly representing elevation or forest density metrics.



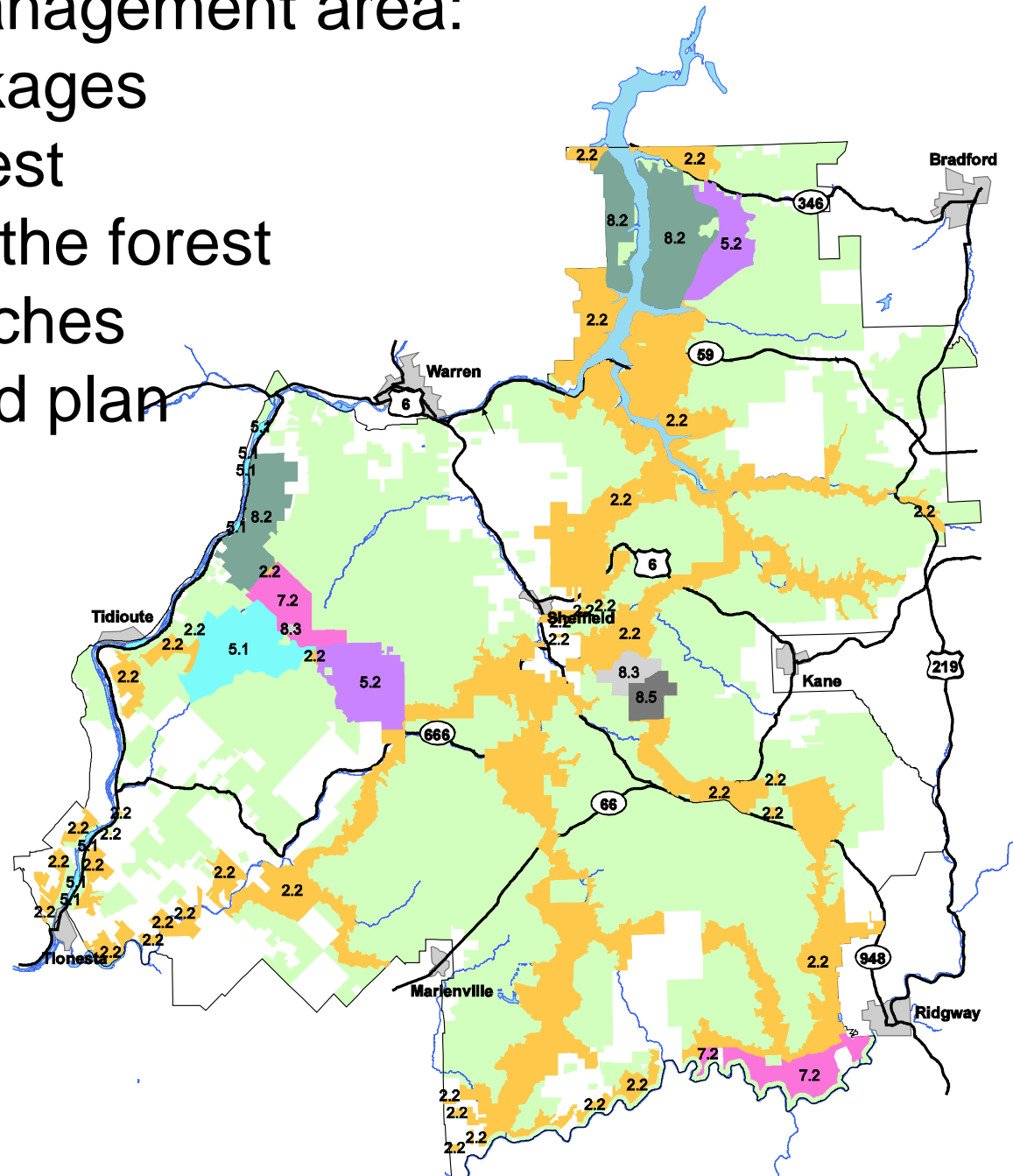


# Revised Forest Plan identifies core old forest areas in multiple Management Areas

- Existing and Proposed Wilderness
- National Recreation Area
- Remote Recreation Areas
- Research Natural Area



Creates a new management area:  
Late structural linkages  
to connect old forest  
within and across the forest  
From the best patches  
identified under old plan



# Management Area 2.2 – Late Structural Linkages

## Contribution to Desired Condition

This management area provides predominantly late structural forest habitat that follows the major river valleys with linkages with other management areas that also provide late structural habitat. Characteristics of late structural forests, such as large woody debris, snags, multi-layered forest canopy with gaps, large diameter trees, a diverse understory, and a conifer component, provide habitat for a diversity of plant and animal species. This management area should facilitate wildlife movement and promote genetic flow between core areas.

## Objectives

- Maintain mid to late structural habitat on over 85 percent of the forested area.

## Suitability S = Suitable and U = Unsuitable

### Trail Use or Activity Suitability

Interpretive Trails	S	
Snowmobiling		S
ATV/OHM (in IUAs only)		S
Bicycling	S	

### Equestrian Use

On Trails/Routes	S
Cross-country	S

### Other Recreational Use or Activity

Dispersed Camping	S
Developed Camping	S

## **MA 2.2 – Standards and Guidelines**

### ***Transportation Systems***

#### **Standards**

New road construction shall occur only

- On existing road corridors.
- When needed to access non-Federal lands.
- To access lands outside of this management area where no other road access is feasible.

New roads shall be designed and managed to TSL D and will be restricted or closed when not in use.

#### **Vegetation**

#### **Guidelines**

Prescriptions to sustain or accelerate development of late structural forest characteristics, restore understory forest conditions, enhance habitat for species with viability concerns, enhance mast production, and retain mature overstories should be implemented in a variety of forest types. These prescriptions should be variable in the intensity as applied to mimic the heterogeneity that occurs naturally in older forest ecosystems.



## § 219.50 - § 219.59 Pre-Decisional Administrative Review Process

Materials were condensed for this presentation. For more details, see <http://www.fs.usda.gov/goto/planningrule/faqs>

# Objection Process



- Public opportunity for an independent Forest Service review and resolution of issues prior to plan approval
- Responsible Official will
  - Disclose when proposed plan, amendment, or revision is subject to objection
  - Provide public notice of beginning of objection period



# Objection Process



- Individuals or organizations that submitted formal comments can file objections
- Objections must be filed in writing within 30 days of the public notice
- Responses issued within 90 days of the close of the objection period





Q&A