



United States Department of Agriculture

Springs Valley Trail & Boat Launch



Location specific information

Use type: hiking, mountain biking, horse riding, fishing and boating

Length of trail: 12 miles

Facilities: trailhead with horse trailer parking, hitching rails, accessible mounting ramp, two additional parking lots, picnic tables along the trail, and boat launch with vault toilets

Special features: scenic views of Springs Valley Lake and remnants of the historic Buffalo Trace

Directions

To the trailhead: GPS coordinates 38° 28' 41.217"N, 86° 31' 29.131" W

From French Lick: Ind. 145 south 6.4 miles, turn left on Liberty Church Road. Turn left on County Road 475. In 1/4 mile bear right onto County Road 625. Go 1.5 miles to the trailhead on the left.

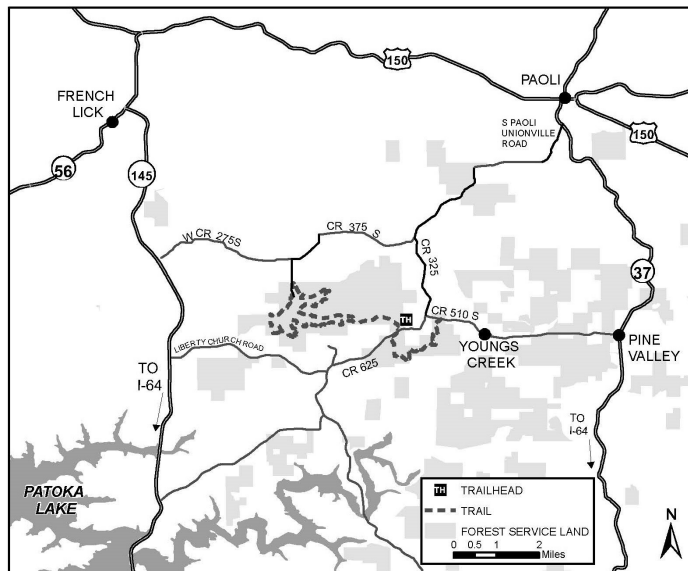
From Paoli: Ind. 37 south 1 mile, turn right on South Paoli Unionville Road. Go 1 mile, turn right onto County Road 150 S. Go 1.1 miles, turn left on County Rd 225 W. Go 2.5 miles, turn left on County Road 325 W. Go 3 miles to the trailhead on the right.

To the boat launch from French Lick: Ind. 145 south. Left on Old State Road 145. Left on County Road 375 S. Right on S County Road 550 W.

Safety

In case of emergency call 911

Nearest hospital: Paoli, Ind.



Orange County Central Dispatch: 812-723-2417

Indiana Conservation Officer Dispatch:
812-837-9536

Use caution during hunting seasons. Blaze orange clothing is recommended.

Etiquette and rules

Horse riders and mountain bikers (age 17 years and older) are required to have a permit and stay on designated trails. Permits are available from our offices and local vendors (see website). Forest trails are closed to all motorized vehicles.

Non-motorized or electric trolling motors only for boats.

Horses prohibited at boat launch area.

Follow Leave No Trace principles.

Private and public land ownership is scattered within the forest boundary. Visitors must take care to stay on National Forest System lands and respect private property.



Scan here to see a georeferenced map.

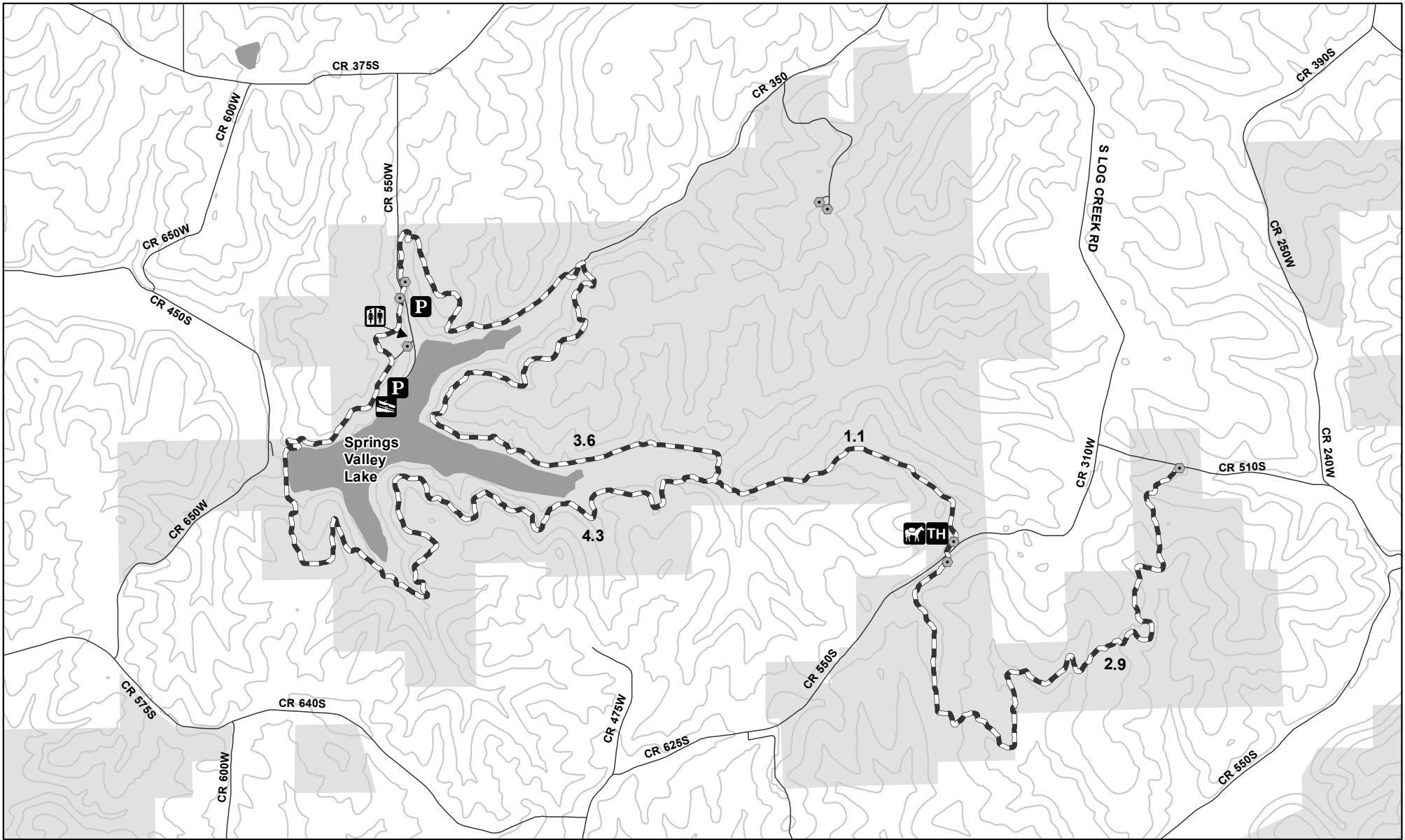


Forest
Service

Hoosier National Forest
248 15th Street, Tell City, IN 47586
(812) 547-7051
www.fs.usda.gov/Hoosier

6/2020
USDA is an equal opportunity provider, employer, and lender.

SPRINGS VALLEY TRAIL AND BOAT LAUNCH



LEGEND

TH TRAILHEAD	BOAT LAUNCH	GATE	50 FT CONTOUR
P PARKING	TOILET	TRAIL	LAKE
HORSE TRAILER PARKING		ROAD	USDA FOREST SERVICE LAND

0 0.5 1 Miles

Updated 6/19

YIELD TO FOREST

Original data compiled from multiple source data and may not meet National Mapping Accuracy Standards. For specific data source information contact the Hoosier National Forest. No warranty is made to the contents or accuracy of the data. USDA is an equal opportunity provider, employer, and lender.