



## Woodrock Area Designated Travel System



Tongue Ranger District  
Bighorn National Forest  
2013 Eastside 2nd Street  
Sheridan, WY 82801  
307.674.2600

[www.fs.usda.gov/bighorn/](http://www.fs.usda.gov/bighorn/)

### What's changed?



Within the Woodrock area, motorized travel is limited to designated roads and trails. Cross-country motorized travel is not permitted anywhere on the Bighorn National Forest.



This handout explains what roads and trails are designated as part of the official system of Forest Service roads and trails as determined in the Woodrock Project Record of Decision signed in 2005. The decision addressed resource concerns and public comments.



Trails designated open for motorized travel are limited to vehicles 50 inches or less in width. Trail numbers and prohibitions have been posted at the beginnings of these trails.

In 2006, many of the old logging roads and some user-created routes were decommissioned.

Additional logging roads were decommissioned once logging operations were completed in following years.



Some trails were reconstructed and new trails were constructed to complete motorized loops. The only roads and trails open to motorized use are those signed as open to that use.



Additional reconstruction projects will be completed as budget and workforce allow.

The free Motor Vehicle Use Map for the Bighorn National Forest displays all motorized trails and roads on the forest, as well as any restrictions associated with them.

All of the open roads and trails within the Woodrock project area are enrolled in the Wyoming State ORV program. A valid ORV sticker is required for use on these trails. The Wyoming State Trails program assists the forest in maintenance and construction of the motorized trails enrolled in this program.



Because of damage and resource concerns, many areas near streams and lakes were rehabilitated and closed to camping. Other areas were enlarged and opened to camping. In general, camping is not allowed within 100 feet of water. Exceptions are signed as open to camping. The following specific areas were enlarged and open to camping.

**Overflow camping area** between Tie Flume and Dead Swede Campgrounds.



**Duncan Lake**—a new route accesses the lake and an area has been created for camping and parking. Sites adjacent to the lake will be rehabilitated and closed to camping.



Several areas were fenced or physically blocked for camping and the user-created access routes were decommissioned and rehabilitated. These areas are:



**Boy Scout Road near Dead Swede Campground**—a parking area was constructed adjacent to Forest Service Road 26. The old road was decommissioned.



**Woodrock Guard Station area**—a fence was constructed to designate where camping is allowed, keeping sites away from the creek. Some user-created access routes were rehabilitated.



Numerous user-created routes throughout the area were decommissioned, restricting access to previously-used campsites.



Refer to the map on the other side for open roads and trails.

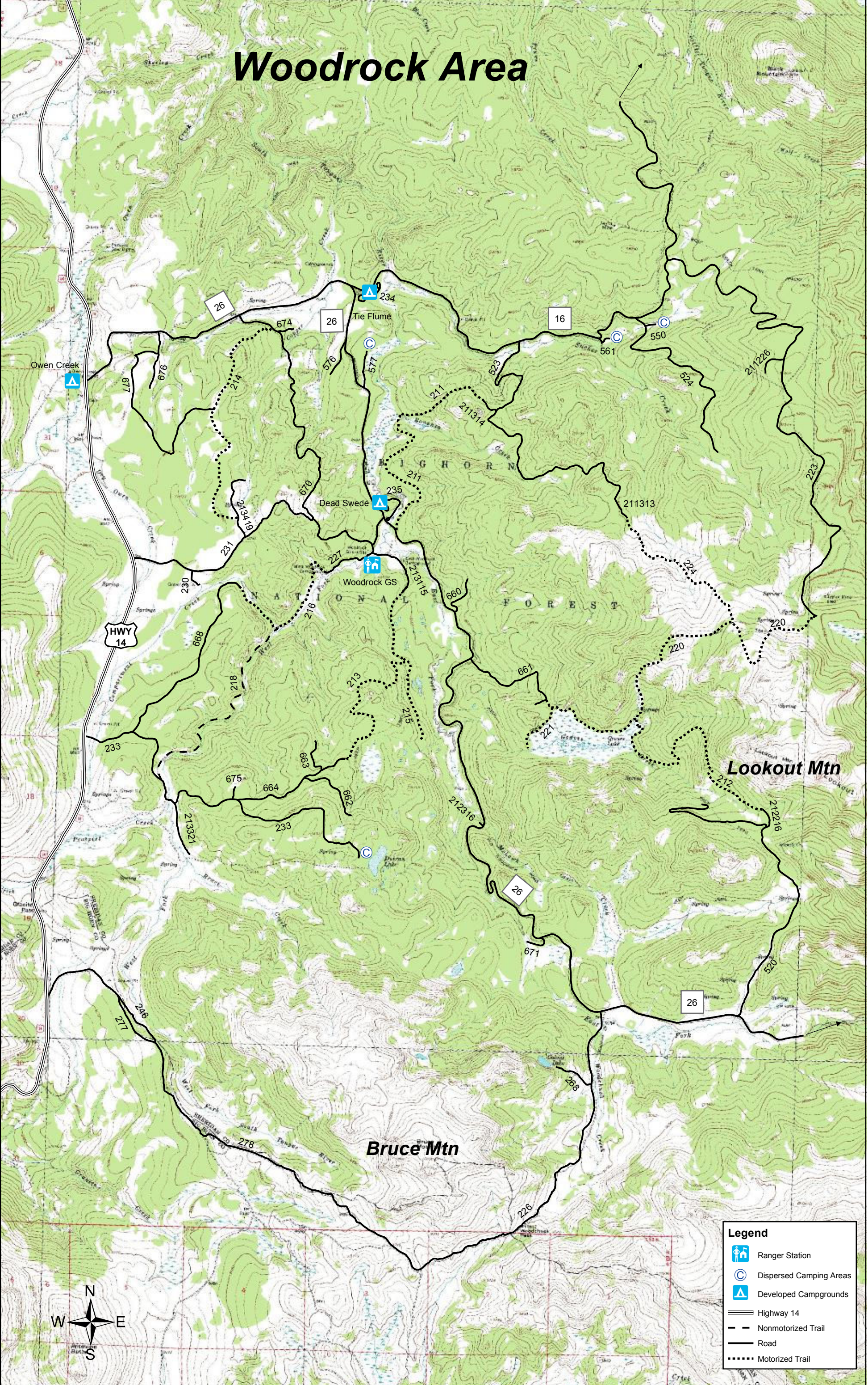
- ⇒ **The 14-day stay limit is in effect from June 1 to September 10 for all areas in the Bighorn National Forest.**
- ⇒ **Camping is not allowed within 1/4 mile of Forest Service Roads 26 and 16 within the Woodrock project area from June 1 to September 10.**
- ⇒ **Camping is not allowed within 100 feet from water unless signed as allowed.**
- ⇒ **Motorized vehicles may not travel more than 300 feet off designated routes and only for firewood gathering, camping, or game retrieval.**




**T**Travel and recreate with minimum impact  
**R**espect the environment and rights of others  
**E**ducate yourself, plan and prepare before you go  
**A**llow for future use of the outdoors—leave it better than you found it  
**D**iscover the rewards of responsible recreation  
**L I G H T L Y !**  
*The USDA is an equal opportunity provider and employer.*





# Woodrock Area





Legend


 Ranger Station

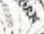
 Dispersed Camping Areas

 Developed Campgrounds

 Highway 14

 Nonmotorized Trail

 Road

 Motorized Trail