

United States Department of Agriculture

Forest Service

Utah

America's Great Outdoors

2023



Motor Vehicle Use Map

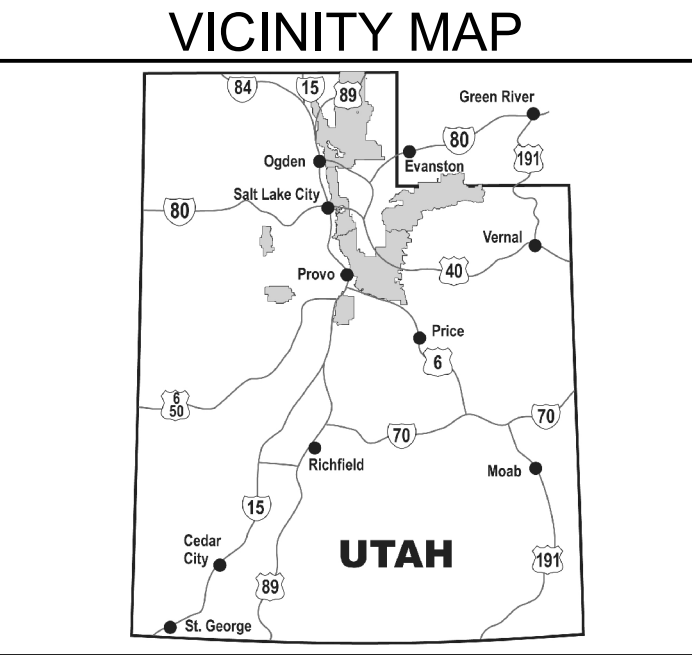
Salt Lake

Ranger District,

Uinta-Wasatch-

Cache

National Forest



INFORMATION SOURCES

Contact Information

<http://www.fs.fed.us/r4/uwc/>

Uinta-Wasatch-Cache National Forest Supervisor's Office

857 West South Jordan Parkway

South Jordan, UT 84095

(801) 999-2103

Salt Lake Ranger District

6944 South 3000 East

Salt Lake City, UT 84121

(801) 733-2660

Public Lands Information Center

(801) 466-6411


EMERGENCY.....911

To Report Fires.....911

Poaching Hotline... (800) 662-DEER (3337)


treadlightly!

LEAVING A GOOD IMPRESSION



Scan the QR codes to download Motor Vehicle Use Maps from Avenza








Photo Courtesy of the Uinta-Wasatch-Cache National Forest, 2011  
FS-873-0419

Legend

Roads Open to Highway Legal Vehicles

Roads Open to all Vehicles

Trails Open to all Vehicles

Trails Open to Vehicles 50" or Less in Width

Trails Open to Wheeled Vehicles 50" or Less in Width

Trails Open to Motorcycles Only

Special Designation (See Table)

Seasonal Designation (See Table)

Dispersed Camping, Both Sides

Dispersed Camping, Left Side

Dispersed Camping, Right Side (See table for DC information)

Interstate

Highways, U.S. State, County

Other Public Roads

Other Public Trails

Short Route Identifier

Milepost Marker

Areas Open to Cross-Country Travel

FS Campgrounds

Picnic Area

Motorized Trailhead

Information Site

Peaks

Forest Boundary

National Forest System Lands

Non-National Forest System Lands within the National Forest

Wilderness Areas

Political Boundary

Township and Range Lines

Section Lines

Large Lakes and Rivers

0 4 8 12 16 Miles

N

### EXPLANATION OF LEGEND ITEMS

Roads Open to Highway Legal Vehicles Only:

Roads open only to motor vehicles licenced under State law for general operation on all public roads.

Roads Open to All Vehicles:

Roads open to all motor vehicles, including smaller off highway vehicles that may not be licensed for highway use (not to oversize or overweight vehicles under State traffic law).

Trails Open to All Vehicles:

Trails open to all motor vehicles, including both highway legal and nonhighway legal vehicles.

Trails Open to Vehicles 50"or Less in Width:

Trails open only to motor vehicles less than 50 inches in width at the widest point on the vehicle.

Trails Open to Wheeled Vehicles 50" or Less in Width:

These trails are open open to wheeled, motor vehicles less than 50" in width at the widest point on the vehicle.

Trails Open to Motorcycles Only:

Trails open only to motorcycles. Sidecars are not permitted.

Special Vehicle Designation:

Indicates the road or trail is open to classes of vehicles other than those listed above. Refer to the Seasonal and Special Designation Table for further instructions.

Seasonal Designation:

This symbol, used in conjunction with one of the other road or trail symbols, indicates that the road or trail is open only during certain portions of the year. Refer to Seasonal and Special Designation Table for further instructions.

Dispersed Camping:

Dispersed Camping, Both Sides

Used along with a designated road or trail to indicate limited cross-country motor vehicle use within a specific distance of that route, solely for the purpose of dispersed camping. Refer to the Dispersed Camping for specifics.

Other Public Roads and Trails:

Interstate

Highways, U.S., State, County

Other Public Roads

Other Public Trails

Used to show routes not designated for motorized use by the Forest Service. Part of the reference layers showing connections to towns and cities outside the forest boundary.

Short Route Identifier:

70333

Used for roads that are to short to show an actual symbol type on the map. The symbol with the arrow pointing away from the road will direct the user to a table that contains a corresponding road number for more information.

Milepost Marker:

Used to display the beginning and ending mileposts of a road that has a change in the designation but not the symbology.


Motorized Trail Access:

This symbol indicates a trail head for access to a motorized route. Not all motorized routes have trail heads and those that do may range from primitive to developed.

BLANKET STATEMENT FOR TRAVEL MANAGEMENT

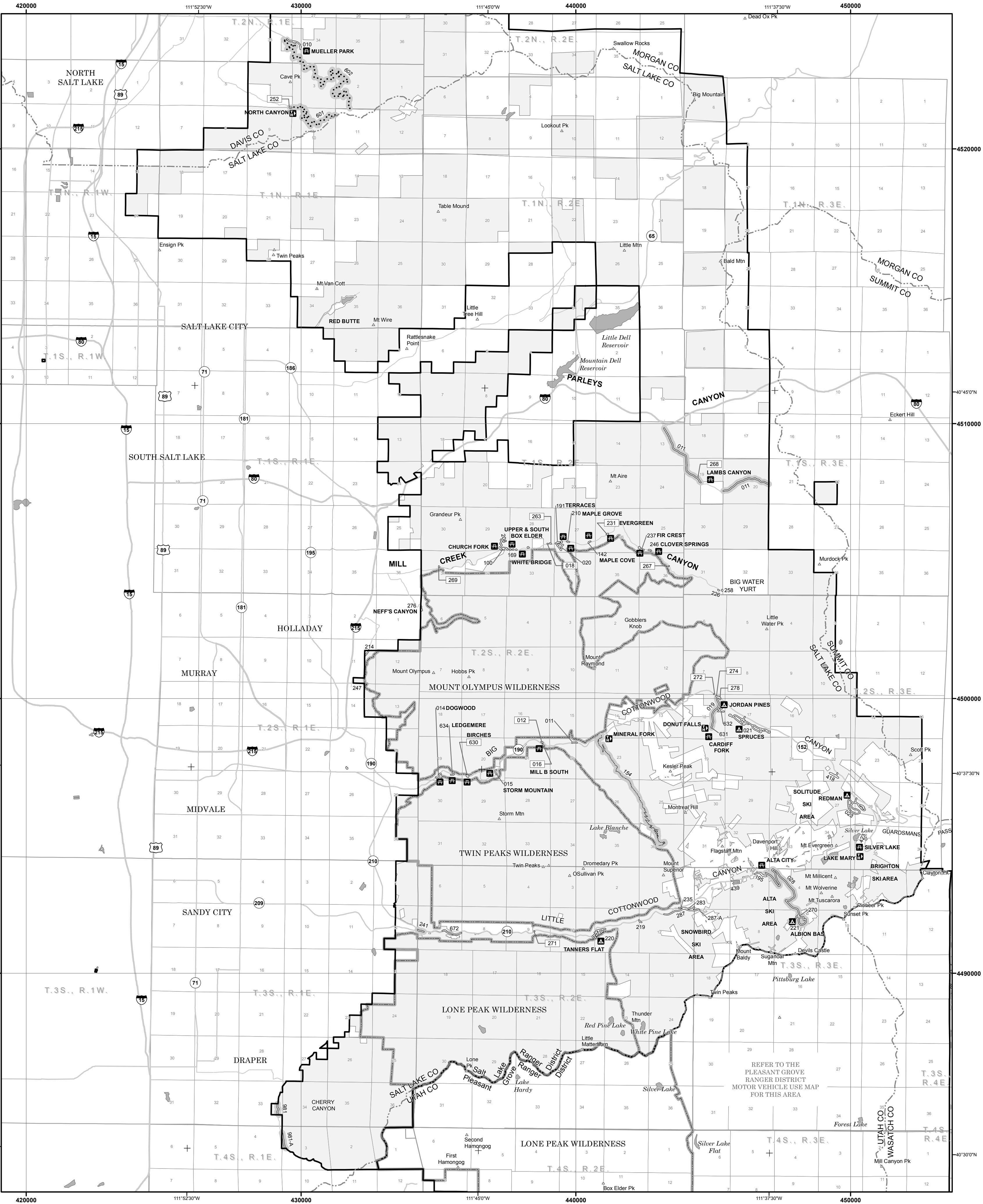
Trails Open to E-Bikes:

The Forest Service manages e-bikes as a motor vehicle. Class 1, 2, and 3 e-bikes are allowed on roads designated for all classes of motor vehicles and roads designated for motorized mixed use. Class 1, 2, and 3 e-bikes are also allowed on trails open to all classes of motor vehicles, including motorcycles; and trails designated for those classes of e-bikes. Refer to the Seasonal and Special Vehicle Designation Table for roads and trails that have restrictions on the use of e-bikes.

Seasonal and Special Vehicle Designations (Salt Lake)						
Route Number	Legend		Special Vehicle Designation	Dates Allowed	Beginning Mile Post	Ending Mile Post
154		Trails open to Wheeled Vehicles 50" or less in width, with Seasonal Designation	Seasonal Designation	05/01-11/01	0.000	4.798
157		Trails open to motorcycles, with Seasonal Designation	Seasonal Designation	06/01-10/31	5.250	17.184
601, 602		Trails open to motorcycles, with Seasonal Designation	Seasonal Designation	05/01-11/01		
011		Roads open to highway legal vehicles only, with Seasonal Designation	Seasonal Designation	06/01-10/31	0.000	1.619
011		Roads open to highway legal vehicles only, with Seasonal Designation	Seasonal Designation	06/01-10/31	2.217	3.379
019, 631		Roads open to highway legal vehicles only, with Seasonal Designation	Seasonal Designation	06/01-11/01		
028, 221, 270		Roads open to highway legal vehicles only, with Seasonal Designation	Seasonal Designation	06/15-11/01		
241, 981, 981-A		Roads open to highway legal vehicles only, with Seasonal Designation	Seasonal Designation	04/01-12/01		
268		Roads open to highway legal vehicles only, with Seasonal Designation	Seasonal Designation	06/01-10/31	0.000	0.020

Roads Too Short to Be Seen Clearly on the Map		
Road Number	Route Designation	Length in Feet
012	Road Open to Highway Legal Vehicles	201
016	Road Open to Highway Legal Vehicles	290
018	Road Open to Highway Legal Vehicles	95
219	Road Open to Highway Legal Vehicles	438
231	Road Open to Highway Legal Vehicles	69
252	Road Open to Highway Legal Vehicles	264
263	Road Open to Highway Legal Vehicles	259
267	Road Open to Highway Legal Vehicles	190
268	Road Open to Highway Legal Vehicles	106
269	Road Open to Highway Legal Vehicles	179
271	Road Open to Highway Legal Vehicles	95
272	Road Open to Highway Legal Vehicles	718
274	Road Open to Highway Legal Vehicles	348
278	Road Open to Highway Legal Vehicles	322
534	Road Open to Highway Legal Vehicles	317
630	Road Open to Highway Legal Vehicles	459

Dispersed Camping			
Road Number	Distance/ Side of Road	Vehicle Type	Dates Allowed
001	150 feet off center line of the road	Same as permitted on the road	Same as permitted on the road
008			
012			
012A			
084			
175			
177			
209			
250			
259			
260			
540			
815			



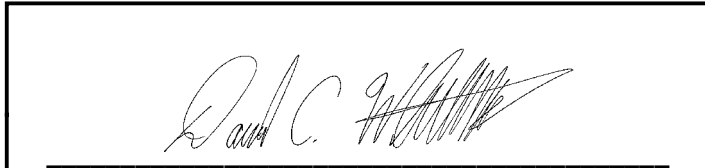
### Salt Lake County

North American Datum of 1983 (NAD 83)  
Universal Transverse Mercator, zone 12



PURPOSE AND CONTENTS OF THIS MAP

The designations shown on this motor vehicle use map (MVUM) were made by the responsible official pursuant to 36 CFR 212.51; are effective as of the date of this MVUM; and will remain in effect until superseded by the next year's MVUM.



It is the responsibility of the user to acquire the current MVUM. This MVUM shows the National Forest System roads, National Forest System trails, and the areas on National Forest System lands in the Uinta-Wasatch-Cache National Forest, Salt Lake Ranger District that are designated for motor vehicle use pursuant to 36 CFR 212.51. This MVUM also identifies the vehicles classes allowed on each route and in each area and any seasonal restrictions that apply on those routes and in those areas.

Designation of a road, trail, or area for motor vehicle use by a particular class of vehicle under 36 CFR 212.51 should not be interpreted as encouraging or inviting use, or to imply that the road, trail, or area is passable, actively maintained, or safe for travel. Motor vehicle designations include parking along designated routes and at facilities associated with designated routes when it is safe to do so and when not causing damage to National Forest System resources. Seasonal weather conditions and natural events may render designated roads and trails impassable for extended periods. Designated areas may contain dangerous or impassable terrain. Many designated roads and trails may be passable only by high-clearance vehicles or four-wheel drive vehicles. Maintenance of designated roads and trails will depend on available resources, and many may receive little maintenance.

This motor vehicle use map identifies those roads, trails, and areas designated for the motor vehicle use under 36 CFR 212.51 for the purpose of enforcing the prohibition at 36 CFR 261.13. This is a limited purpose. The other public roads are shown for information and navigation purposes only and are not subject to designation under the Forest Service travel management regulation.

These designations apply only to National Forest System roads, National Forest System trails, and areas on National Forest System lands.

PROHIBITIONS

It is prohibited to possess or operate a motor vehicle on National Forest System lands on the Uinta-Wasatch-Cache National Forest, Salt Lake Ranger District other than in accordance with these designations (36 CFR 261.13).

Violations of 36 CFR 261.13 are subject to a fine of up to \$5,000 or imprisonment for up to 6 months or both (18 U.S.C. 3671(e)). This prohibition applies regardless of the presence or absence of signs.

This map does not display nonmotorized uses, over-snow uses, or other facilities and attractions on the Uinta-Wasatch-Cache National Forest, Salt Lake Ranger District. Obtain a forest visitor map for more complete information.

Designated roads, trails, and areas may also be subject to temporary, emergency closures, and visitors must comply with signs notifying them of such restrictions. A national forest may issue an order to close a road, trail, or area on a temporary basis to protect the life, health or safety of forest visitors or the natural or cultural resources in these areas. Such a temporary and/or emergency closures are consistent with the Travel Management Rule (36 CFR 212.52 (b); 36 CFR 261 subpart B).

The designation "road or trail open to all motor vehicles" does not supersede vehicle size or weight limits imposed through State traffic law.

OPERATOR RESPONSIBILITIES

Operating a motor vehicle on National Forest System roads, National Forest System trails, and in areas on National Forest System lands carries a greater responsibility than operating that vehicle in a city or other developed setting. Not only must the motor vehicle operators know and follow all applicable traffic laws, but they need to show concern for the environment as well as other forest users. The misuse of motor vehicles can lead to the temporary or permanent closure of any designated road, trail, or area. Operators of motor vehicles are subject to State traffic law, including State requirements for licensing, registration, and operation of the vehicle in question.

Motor vehicle use, especially off-highway vehicle use, involves inherent risks that may cause property damage, serious injury, and possibly death to participants. Riders should drive cautiously and anticipate rough surfaces and features, such as snow, mud, vegetation, and water crossings common to remote driving conditions. Participants voluntarily assume full responsibility for these damages, risks, and dangers. Motor vehicle operators should take care at all times to protect themselves and those under their responsibility.

Much of the Uinta-Wasatch-Cache National Forest, Salt Lake Ranger District is remote, and medical assistance may not be readily available. Cellular telephones do not work in many areas of the Uinta-Wasatch-Cache National Forest, Salt Lake Ranger District. Operators should take adequate food, water, first aid supplies, and other equipment appropriate for the conditions and expected weather.

ALWAYS REMEMBER TO RESPECT PRIVATE LAND! PROTECT YOUR PRIVILEGE. STAY ON DESIGNATED ROADS AND TRAILS AND IN DESIGNATED AREAS.

Read and understand this map in its entirety. If you have questions please contact the Uinta-Wasatch-Cache National Forest, Salt Lake Ranger District for clarification.

Road, trail, and area users must comply with this map, as well as all Federal, State, and local laws and regulations. Compliance with these rules is the responsibility of the user.

The U.S. Department of Agriculture (USDA) prohibits discrimination in all its programs and activities on the basis of race, color, national origin, age, disability, and where applicable, sex, marital status, familial status, parental status, religion, sexual orientation, genetic information, political beliefs, reprisal, or because all or part of an individual's income is derived from any public assistance program. (Not all prohibited bases apply to all programs.) Persons with disabilities who require alternative means for communication of program information (Braille, large print, audiotape, etc.) should contact USDA's TARGET Center at (202) 720-2600 (voice and TDD). To file a complaint of discrimination, write to USDA, Director, Office of Civil Rights, 1400 Independence Avenue, S.W., Washington, D.C. 20250-9410, or call (800) 795-3272 (voice) or (202) 720-6382 (TDD). USDA is an equal opportunity provider and employer.

Seasonal and Special Vehicle Designations (Davis/Morgan)					
Route Number	Legend	Special Vehicle Designation	Dates Allowed	Beginning Mile Post	Ending Mile Post
190032	Trails open to all vehicles, with Seasonal Designation	Seasonal Designation	07/01-11/01	0.000	17.017
601, 602	Trails open to motorcycles, with Seasonal Designation	Seasonal Designation	05/01-11/01		
605	Trails open to Wheeled Vehicles 50" or less in width, with Seasonal	Seasonal Designation	05/01-11/01	1.137	1.391
606	Trails open to Wheeled Vehicles 50" or less in width, with Seasonal	Seasonal Designation	05/01-10/01	0.000	2.161
606	Trails open to motorcycles, with Seasonal Designation	Seasonal Designation	05/01-10/01	2.161	3.488
610	Special Vehicle Designation	ATV	01/01-12/31	0.000	7.461
611	Trails open to Wheeled Vehicles 50" or less in width, with Seasonal	Seasonal Designation	06/01-11/01	0.000	1.961
007	Roads open to all Vehicles, with Seasonal Designation	Seasonal Designation	05/01-10/31	0.258	7.461
008	Roads open to all Vehicles, with Seasonal Designation	Seasonal Designation	07/01-11/01	0.000	5.500
008	Roads open to all Vehicles, with Seasonal Designation	Seasonal Designation	06/01-11/01	5.500	7.695
008, 004, 175, 265, 807	Roads open to all Vehicles, with Seasonal Designation	Seasonal Designation	06/01-11/01		
003, 003-A, 003-B	Roads open to highway legal vehicles only, with Seasonal Designation	Seasonal Designation	04/01-11/15		
177	Roads open to all Vehicles, with Seasonal Designation	Seasonal Designation	05/01-11/01	0.000	8.202
249, 250, 260, 806, 815	Roads open to all Vehicles, with Seasonal Designation	Seasonal Designation	07/01-11/01		
259	Roads open to all Vehicles, with Seasonal Designation	Seasonal Designation	07/01-11/01	0.000	1.202
259	Roads open to all Vehicles, with Seasonal Designation	Seasonal Designation	07/01-11/01	1.448	1.536
259	Roads open to all Vehicles, with Seasonal Designation	Seasonal Designation	07/01-11/01	1.629	1.687

Seasonal and Special Vehicle Designations (Tooele)					
Route Number	Legend	Special Vehicle Designation	Dates Allowed	Beginning Mile Post	Ending Mile Post
750, 757	Trails open to motorcycles, with Seasonal Designation	Seasonal Designation	04/15-11/01		
759	Trails open to Wheeled Vehicles 50" or less in width, with Seasonal Designation	Seasonal Designation	04/15-11/01	0.000	2.750
001, 539, 578	Roads open to all Vehicles, with Seasonal Designation	Seasonal Designation	04/15-12/01		
011, 534, 542, 584, 585	Roads open to all Vehicles, with Seasonal Designation	Seasonal Designation	04/02-11/01		
014, 015, 333, 538, 543, 554	Roads open to all Vehicles, with Seasonal Designation	Seasonal Designation	04/15-11/01		
171	Roads open to highway legal vehicles only, with Seasonal Designation	Seasonal Designation	04/01-12/01	0.000	1.980
171	Roads open to highway legal vehicles only, with Seasonal Designation	Seasonal Designation	04/15-11/01	1.980	3.512
548	Roads open to all Vehicles, with Seasonal Designation	Seasonal Designation	04/01-12/01	0.000	0.063
549, 550, 571	Roads open to highway legal vehicles only, with Seasonal Designation	Seasonal Designation	04/01-12/01		
583	Roads open to highway legal vehicles only, with Seasonal Designation	Seasonal Designation	04/15-11/01	0.000	0.825

Legend

- Roads Open to Highway Legal Vehicles
- Roads Open to all Vehicles
- Trails Open to all Vehicles
- Trails Open to Vehicles 50" or Less in Width
- Trails Open to Wheeled Vehicles 50" or Less in Width
- Trails Open to Motorcycles Only
- Special Designation (See Table)
- Seasonal Designation (See Table)
- Dispersed Camping, Both Sides
- Dispersed Camping, Left Side
- Dispersed Camping, Right Side (See table for DC information)
- Interstate
- Highways, US, State, County
- Other Public Roads
- Other Public Trails

- Short Route Identifier
- Milepost Marker
- Areas Open to Cross-Country Travel
- FS Campgrounds
- Picnic Area
- Motorized Trailhead
- Information Site
- Peaks
- Forest Boundary
- National Forest System Lands
- Non-National Forest System Lands within the National Forest
- Wilderness Areas
- Political Boundary
- Township and Range Lines
- Section Lines
- Large Lakes and Rivers

- 0 0.25 0.5 Miles

- 0 4 8 12 16 Miles

- 0 4 8 12 16 Miles

- 0 4 8 12 16 Miles

- 0 4 8 12 16 Miles

- 0 4 8 12 16 Miles

- 0 4 8 12 16 Miles

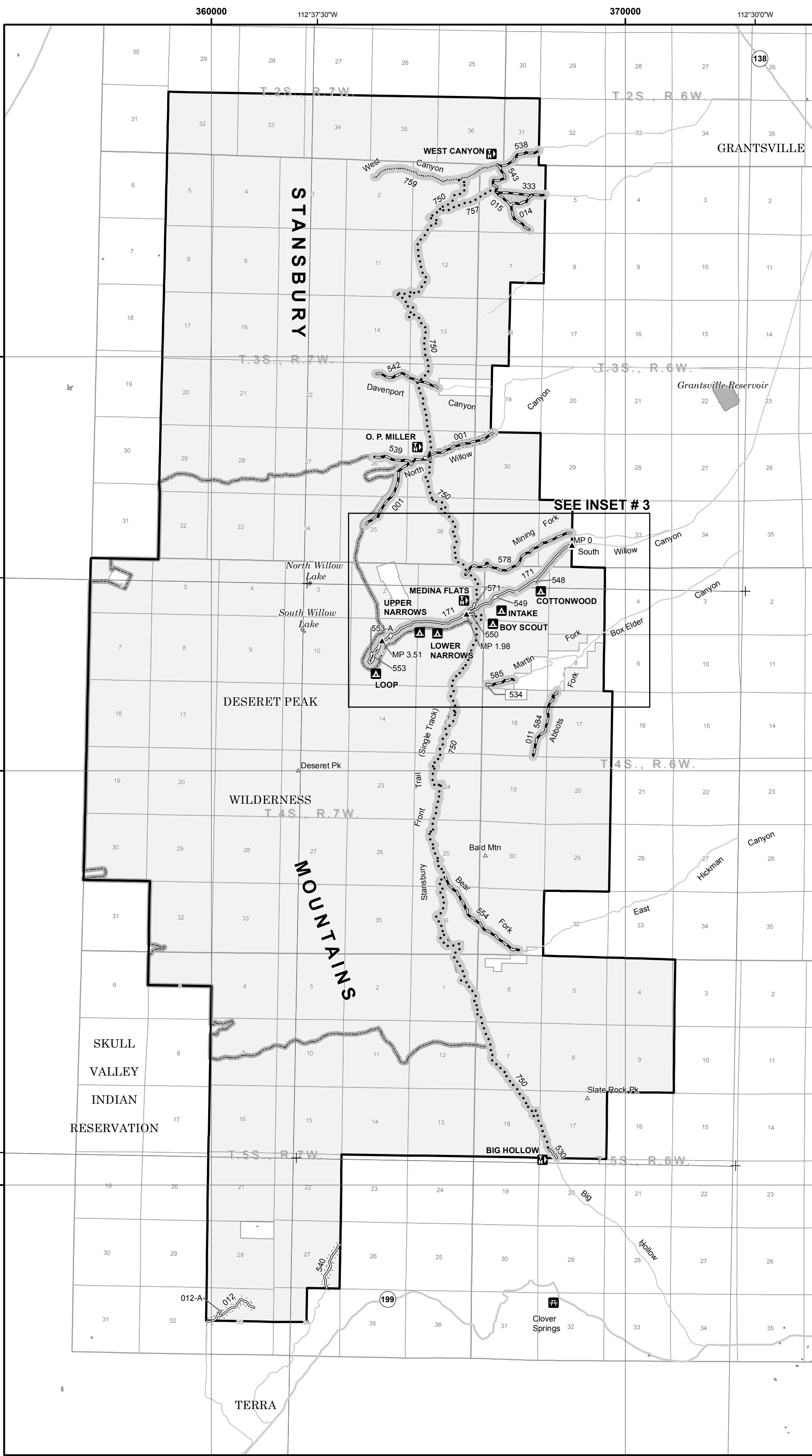
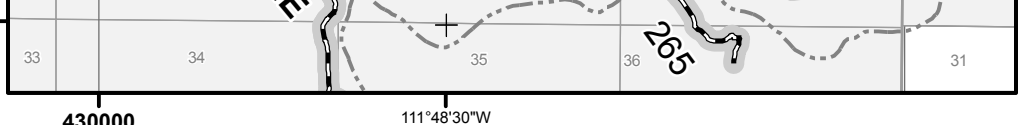
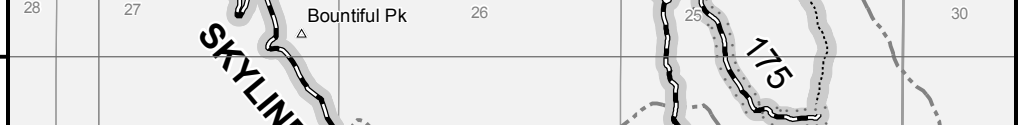
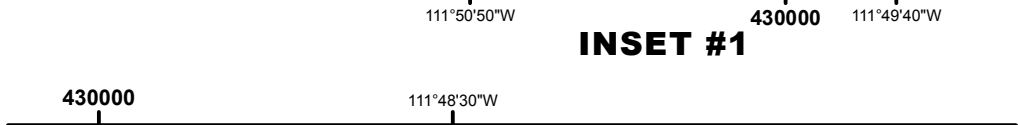
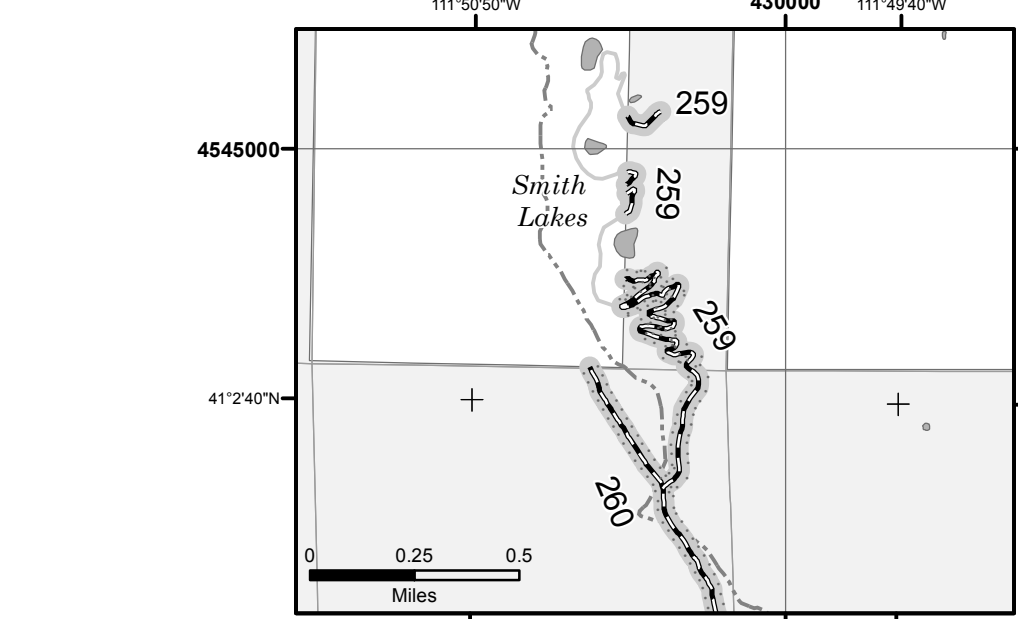
- 0 4 8 12 16 Miles

- 0 4 8 12 16 Miles

- 0 4 8 12 16 Miles

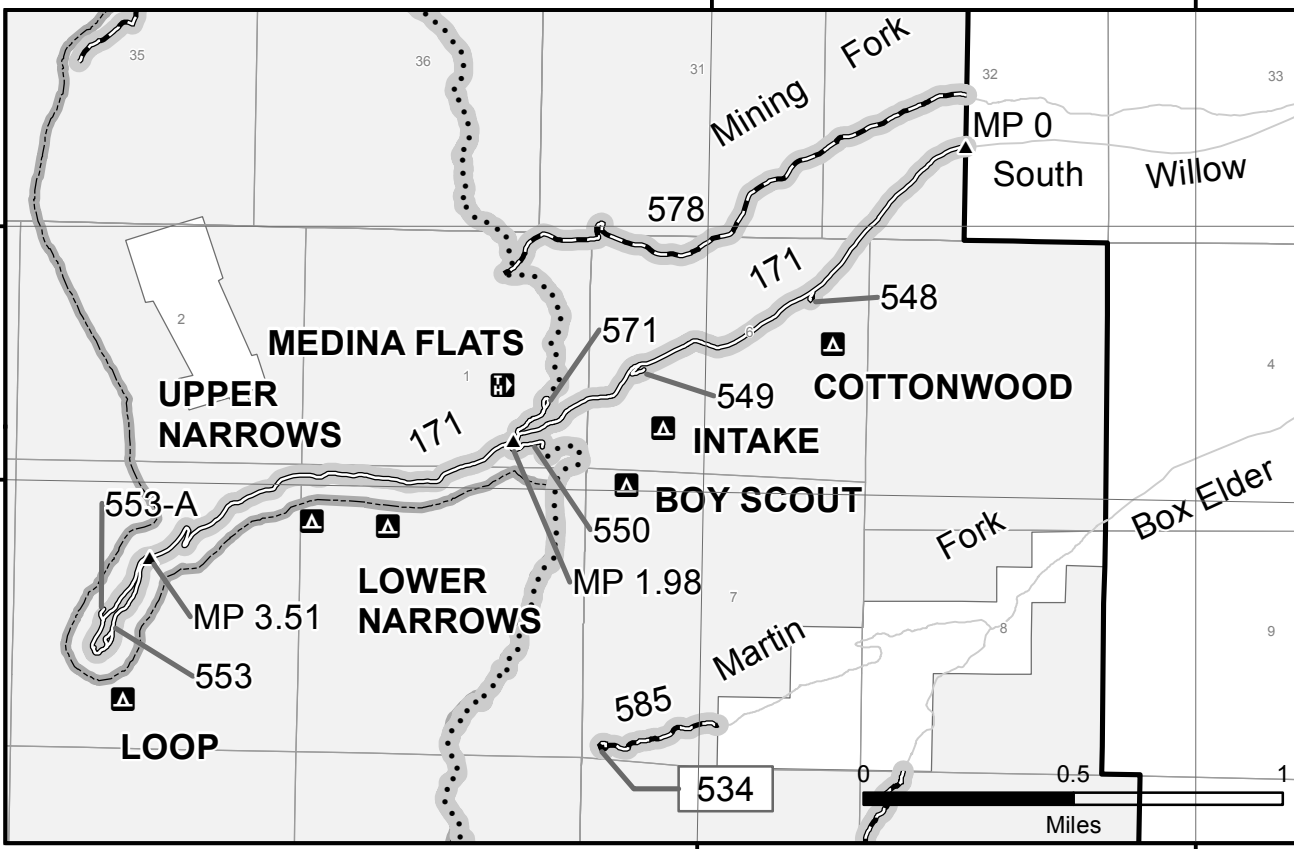
- 0 4 8 12 16 Miles

- 0 4 8 12 16 Miles

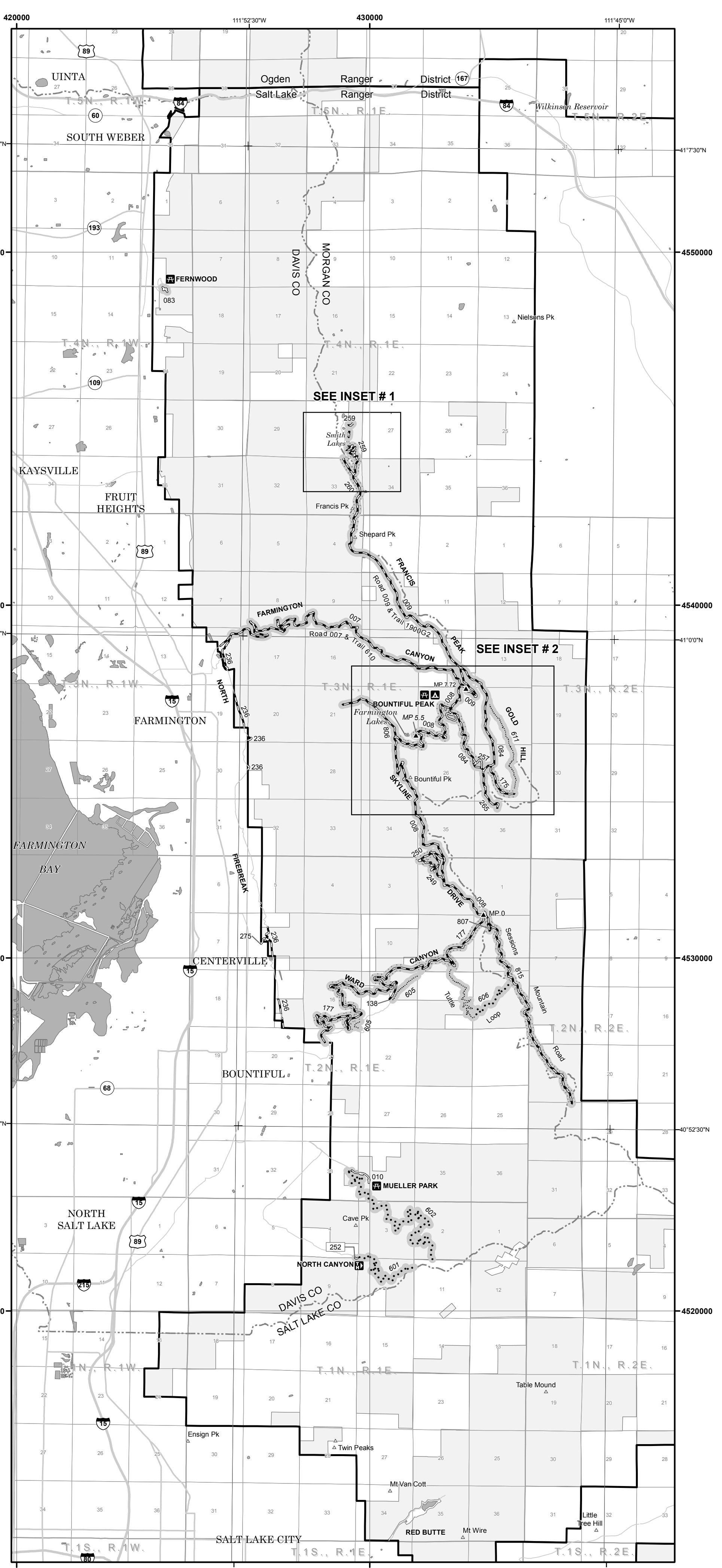


Tooele County

North American Datum of 1983 (NAD 83)  
Universal Transverse Mercator, zone 12



INSET #3



Davis/Morgan County

North American Datum of 1983 (NAD 83)  
Universal Transverse Mercator, zone 12