

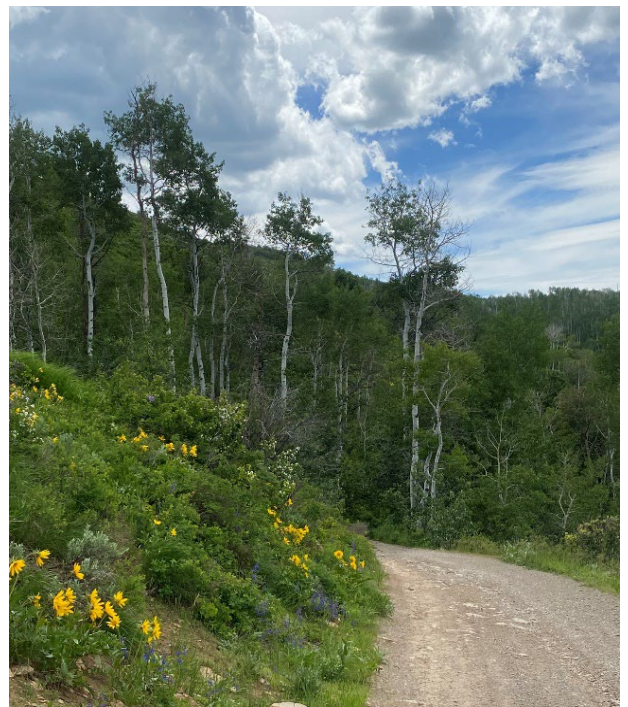
Recreation Update 7/11/2023
Logan Ranger District
1500 East Highway 89 Logan, Utah 84321
(435) 755-3620
Office Hours: Monday-Friday 8:00 AM-4:30 PM

All dates provided in this update are subject to change based on weather, flooding, road conditions, public health, and safety concerns.

Firewood permits for the Logan and Ogden Ranger Districts are available to purchase now. Permits this year allow harvesting of wood that is dead and standing or dead and down. A permit will allow you to harvest wood within the areas shown on the 2023 Logan and Ogden Firewood Cutting Areas Map. All permits sold are valid until November 15, 2023, but permits could sell out before then. Come and get yours now!



The forest is green, and the wildflowers are beautiful.



Day Use Areas	Unit Types	Fee*	Open Dates	Amenities and Additional Information
Card Picnic Area	Picnic Area	\$15	6/2	Picnic tables, fire rings, grill boxes, vault toilets, potable water, garbage.
Chokecherry Picnic Area	Picnic Area	\$15	6/2	Picnic tables, fire rings, grill boxes, vault toilets, potable water, garbage.
Dewitt Picnic Area	Picnic Area	\$15		Picnic tables, fire rings, flushing toilets, garbage.
Second Dam Picnic Area	Picnic Area	\$0		Picnic tables, fire rings, flushing toilets, garbage.
Shenoah Picnic Area	Picnic Area	\$21	Open for first come, first serve, when group site is not reserved.	Picnic tables, fire rings, vault toilets, garbage.
Tony Grove Day Use	Day Use 7 Day Pass Season Pass**	\$15 \$30 \$60	6/30-10/9	Picnic tables, vault toilets, garbage.

*America the Beautiful Passes will waive the \$15 fee to Card, Chokecherry, Dewitt, and Shenoah Picnic Areas; these passes will also waive the parking fee at Tony Grove Day Use Area. Passes must be displayed in vehicle. America the Beautiful Passes can be obtained from the Logan Ranger District Office.



Cabin Rentals	Unit Types	Fee	Amenities and Additional Information
Blacksmith Fork Guard Station	Cabin, overnight	\$75/night	Fire ring, picnic table, vault toilet, propane cook stove, wood burning stove, refrigerator, 2 bunk beds, table, chairs, 3 fixed lanterns. Site can be reserved at www.recreation.gov .

Logan Ranger District Campgrounds	Fee	Open Dates	Reservation Dates	People/ Site	Amenities/Additional Information
Box Elder Campground	\$27	5/26-10/9	5/26-9/4	8	Fire rings, picnic tables, dumpster, flushing toilets, potable water.
Group Site A	\$90	5/26-10/9	5/26-9/4	50	Fire rings, picnic tables, dumpster, flushing toilets, potable water.
Group Site B	\$90	5/26-10/9	5/26-9/4	50	Fire rings, picnic tables, dumpster, flushing toilets, potable water.
Group Site C	\$230	5/26-10/9	5/26-9/4	125	Fire rings, picnic tables, dumpster, flushing toilets, potable water.
Group Site D	\$115	5/26-10/9	5/26-9/4	64	Fire rings, picnic tables, dumpster, flushing toilets, potable water.
Bridger Campground	\$24		No reservations. First come, first serve.	8	Fire rings, picnic tables, dumpster, vault toilet, potable water.
Double Site	\$48		No reservations. First come, first serve.	16	Fire rings, picnic tables, dumpster, vault toilet, potable water.
Friendship Campground	\$18	6/9		8	Fire rings, picnic tables, vault toilet.
Group Site	\$61	6/9		25	Fire rings, picnic tables, vault toilet.
Green Canyon Campground	\$0	5/12-12/1	No reservations. First come, first serve.	8	Fire rings, picnic tables, vault toilet.
Guinavah-Malibu Campground	Guinavah-Malibu Campground is closed for renovations for entire the 2023 season.				
High Creek Campground	\$0	Road Closed			
Lewis M. Turner Campground	\$25	6/2-9/10	6/9-9/4	8	Fire rings, picnic tables, dumpster, flushing toilets.
Lodge Campground	\$25	5/26-9/10	No reservations. First come, first serve.	8	Fire rings, picnic tables, dumpster, vault toilets, potable water.
Pioneer Campground	\$25	6/-9/9	9/4	8	Fire rings, picnic tables, dumpster, vault toilets, potable water.
Preston Valley Campground	\$25	5/26-10/9	5/26-9/4	8	Fire rings, picnic tables, dumpster, flushing toilets, potable water.

Logan Ranger District Campgrounds	Fee	Open Dates	Reservation Dates	People/ Site	Amenities/Additional Information
Red Banks Campground	\$25	6/16	No reservations. First come, first serve.	8	Fire rings, picnic tables, vault toilets, dumpster, potable water.
Shenoah Picnic Area Single Site	\$21	6/2-9/9	No reservations. Availability is dependent on group site reservations.	8	Fire rings, picnic tables, vault toilets, dumpster.
Shenoah Picnic Area Group Site	\$90	6/2-9/9	6/6-9/9	50	Fire rings, picnic tables, vault toilets, dumpster.
Smithfield Campground	\$25		No reservations. First come, first serve.	8	Fire rings, picnic tables, vault toilets, dumpster.
Group Site	\$78		No reservations. First come, first serve.		Fire rings, picnic tables, vault toilets, dumpster.
Spring Campground	\$18	6/9	No reservations. First come, first serve.	8	Fire rings, picnic tables, historic vault toilets.
Spring Hollow Campground	\$27	5/26-10/9	5/26-9/4	8	Paved campsites, fire rings, picnic tables, dumpster, vault toilets, potable water.
Double Site	\$53	5/26-10/9	5/26-9/4	16	Paved campsites, fire rings, picnic tables, dumpster, vault toilets, potable water.
Group Site A	\$180	5/26-10/9	5/26-9/4	95	Paved campsites, fire rings, picnic tables, dumpster, flushing toilets, potable water.
Group Site B	\$90	5/26-10/9	5/26-9/4	45	Paved campsites, fire rings, picnic tables, dumpster, flushing toilets, potable water.
Sunrise Campground	\$25	6/16	6/16-9/4	8	Fire rings, picnic tables, vault toilets, dumpster, potable water.
Glamping Unit Single Site (25, 27)	\$110 + Deposit	6/16		4	1 canvas tent, 2 queen size beds, chair, ottoman, lanterns, outdoor chairs, fire ring, picnic table, vault toilets, dumpster, potable water.
Tony Grove Campground	\$27	7/14-10/9	6/30-9/4	8	Fire rings, picnic tables, vault toilets, dumpster.
Double Site	\$54	7/14-10/9	6/30-9/4	16	Fire rings, picnic tables, vault toilets, dumpster.
Wood Camp Campground	\$25	6/2	No reservations. First come, first serve.	8	Fire rings, picnic tables, vault toilets, dumpster.

Logan Ranger District Trails	Trail Number	Condition
Card West	064	
Cherry Peak	024	
Coldwater East	038	
Crimson	015	Dry. Loop is closed through Guinavah Malibu Campground.
Deep Canyon	037	Please do not park along the road. Parking is only permitted at the trailhead.
Green Canyon	005	
High Creek North Fork	002	Road to trailhead is closed to motorized use due to road damage and flooding.
Jardine Juniper	014	
Left Hand Fork (Pig Trails)	021, 022, 121	
Limber Pine Nature	004	
Logan Dry Trail	016	
Naomi Peak National Recreation from High Creek Canyon to Tony Grove & Tony Grove to Green Canyon	005	Snow still holding in some spots.
Naomi from Naomi Peak north	136	Snow still holding in a few places.
Richards Hollow	019	
Ricks Canyon/Steel Hollow	127/013	There is some damage on this trail.
River	603	
Riverside Nature	052	
Smithfield Canyon	007	Road to trailhead is damaged and closed to motorized vehicles. Great opportunity to bike or hike from the gate.
Temple Fork Sawmill	062	
Tony Grove Nature	604	
White Pine Lake	025	
Willow	056	
Wind Caves	032	Dry. Please be aware of rattlesnakes.

Logan Ranger District Roads	Road Number	Spring Opening Dates	Condition
Adams Corral Road to Logan Peak via White Bedground Springs	FR 052/168		
Beaver Creek	FR 011		
Blacksmith Fork	SR 101	Open	
Card Canyon	FR 024	Open	
Cowley Canyon—Herd Hollow	FR 047	Open	Road is damaged due to runoff on the Herd Hollow side.
Dip Hollow	FR 056	Open	
Franklin Basin	FR 006		
Green Canyon	FR 050	First Gate- Open Second Gate- Open	
Hells Hollow & Saddle Creek	FR 105		
High Creek Canyon	FR 048	TBD	Road is damaged due to high water.
Left Hand Fork of Blacksmith	FR 245 FR 231	Open	
Long Hollow	FR 056	Closed for repair beginning 7/17	Road repairs begin on 7/17 and will require closure of Long Hollow until complete.
Maple Bench	FR 086		
Marie Springs	FR 147	Open	
Millville Canyon	FR 168		High clearance vehicles recommended.
Pole Hollow/Mahogany	FR 150/254	TBD	Road is damaged and needs to be repaired.
Providence Canyon	FR 090		High clearance vehicles recommended.
West Hodges/ Tony Grove Forestry Camp	FR 174	Open	
Sinks	FR 055		Clear of snow.
Smithfield Canyon	FR 049	TBD	Road is damaged due to high water.
Swan Flat	FR 014		Clear of snow.
Temple Canyon	FR 008		
Temple Fork	FR 007	First Gate- Open Second Gate- Open	
Tony Grove	FR 003	Open	Clear of snow.
Twin Creek/Bubble Spring	FR 005	Open	
3 Mile	FR 219	Open	

Campgrounds:

Campgrounds are concessionaire operated by the Utah Recreation Company. For additional information about campgrounds please call 385-273-1100 or visit www.recreation.gov.

Reservations:

Reservations can be made up to 4 months in advance for single sites, 12 months in advance for group sites. Please visit www.recreation.gov for more information.

Dispersed Camping:

Visitors may camp for up to 14 days in any 30-day consecutive period in areas designated for dispersed camping. Dispersed camping along US Highway 89 in Logan Canyon is prohibited. Please see the Logan Ranger District Motor Vehicle Use Map for dispersed camping designations.

Logan Cave:

The cave is gated closed to public entry. The cave was closed on October 1, 1997 to ensure the viability of a rare and special biological community of Townsend's Big-Eared Bats that is located in Logan Cave. The bats are particularly vulnerable to human disturbance during their periods of mating, hibernation, and maternity colony, which runs from about October to August each year. The Big-Eared Bat is listed as a sensitive species by both the Forest Service and Utah Division of Wildlife Resources. To aid with protecting this species during their vulnerable period, it is prohibited to go into or within 250 feet of the mouth of the Logan Cave.

Certified Weed Free Hay:

To prevent the spread of noxious weeds into vulnerable ecosystems on National Forest System lands, hay, straw, and mulch must be certified weed free.

Certified Weed Free Hay List as of July 2022			
American West Heritage Center	Alfalfa Grass	435-230-4782	Wellsville, Utah
Brian Lundahl	Grass	435-881-0609	Providence, Utah
Donnie Merrill	Alfalfa	435-764-3719	Trenton, Utah
Randy Eames	Grass	435-881-4065	Amalga, Utah
Trisha Butler	Alfalfa	435-466-0141	Collinston, Utah