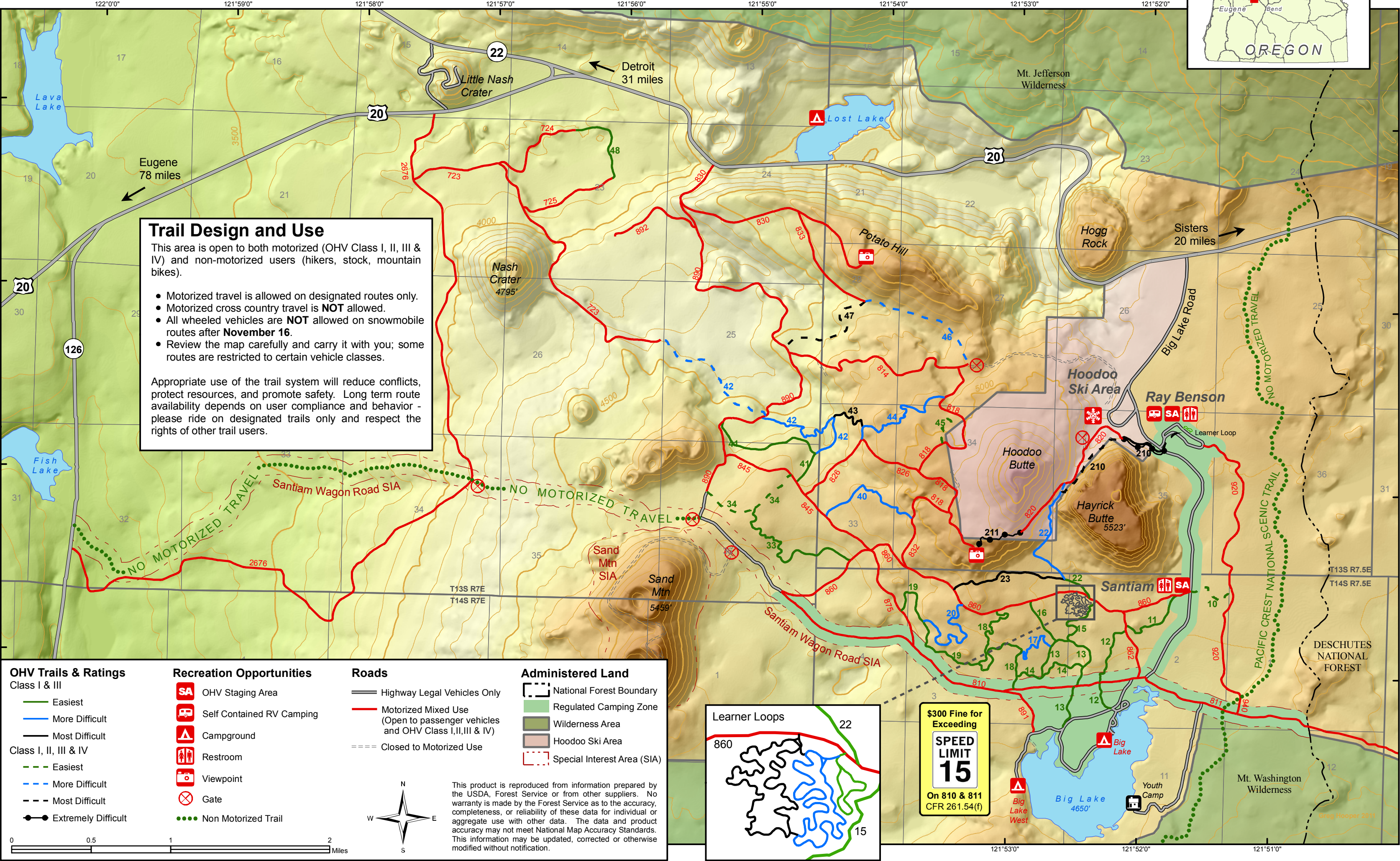


SANTIAM PASS SUMMER MOTORIZED RECREATION AREA

WILLAMETTE NATIONAL FOREST



Trail Design and Use

This area is open to both motorized (OHV Class I, II, III & IV) and non-motorized users (hikers, stock, mountain bikes).

- Motorized travel is allowed on designated routes only.
- Motorized cross country travel is **NOT** allowed.
- All wheeled vehicles are **NOT** allowed on snowmobile routes after **November 16**.
- Review the map carefully and carry it with you; some routes are restricted to certain vehicle classes.

Appropriate use of the trail system will reduce conflicts, protect resources, and promote safety. Long term route availability depends on user compliance and behavior - please ride on designated trails only and respect the rights of other trail users.

OHV Trails & Ratings

Class I & III

- Easiest
- More Difficult
- Most Difficult

Class I, II, III & IV

- - - Easiest
- - - More Difficult
- - - Most Difficult
- Extremely Difficult

Recreation Opportunities

- OHV Staging Area
- Self Contained RV Camping
- Campground
- Restroom
- Viewpoint
- Gate
- Non Motorized Trail

Roads

- Highway Legal Vehicles Only
- Motorized Mixed Use (Open to passenger vehicles and OHV Class I,II,III & IV)
- ==== Closed to Motorized Use

Administered Land

- National Forest Boundary
- Regulated Camping Zone
- Wilderness Area
- Hoodoo Ski Area
- Special Interest Area (SIA)

0 0.5 1 2 Miles

This product is reproduced from information prepared by the USDA, Forest Service or from other suppliers. No warranty is made by the Forest Service as to the accuracy, completeness, or reliability of these data for individual or aggregate use with other data. The data and product accuracy may not meet National Map Accuracy Standards. This information may be updated, corrected or otherwise modified without notification.

