

U.S. DEPARTMENT OF AGRICULTURE  
FOREST SERVICE

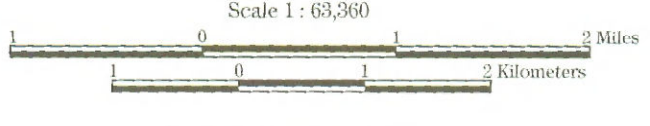
# CARSON-ICEBERG WILDERNESS

Stanislaus and Humboldt-Toiyabe National Forests

CALIFORNIA  
MT DIABLO MERIDIAN

2009

Scale 1 : 63,000

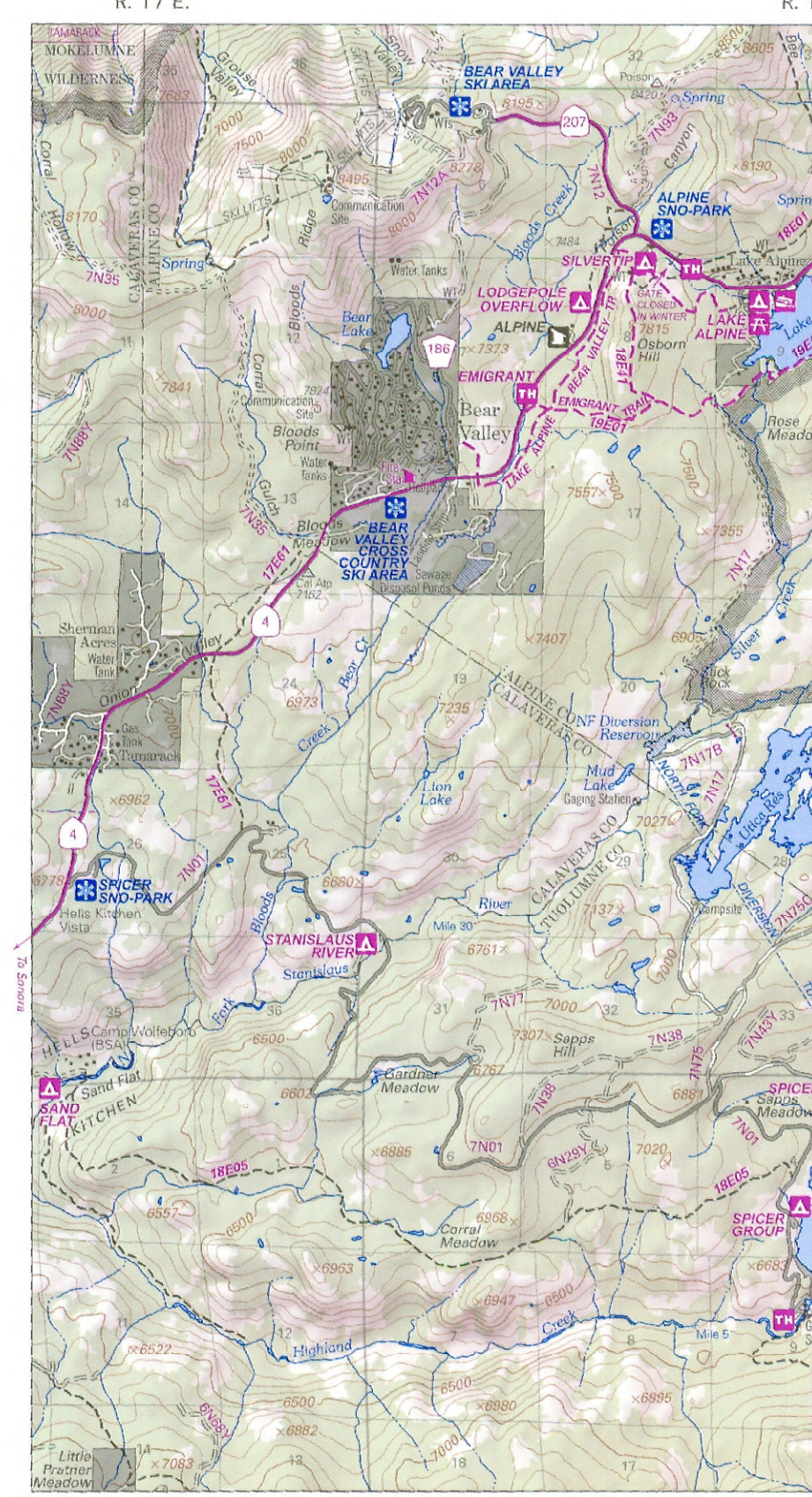


CONTOUR INTERVAL 100 FEET  
SPOT ELEVATIONS IN FEET

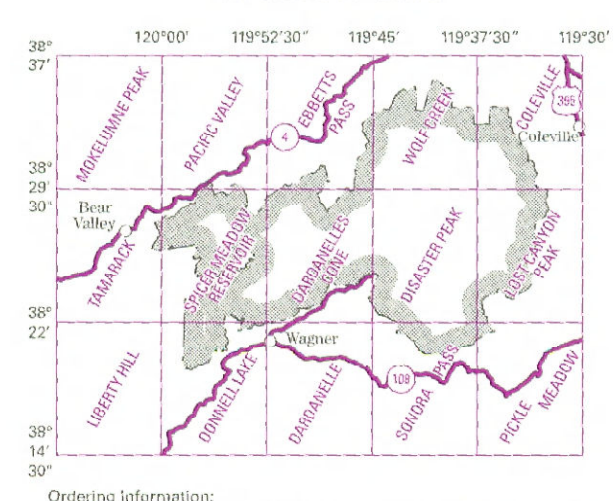
### LEGEND

- Wilderness Boundary (Forest Service)
- Wilderness Study Area Boundary (Division of Land Management)
- National Forest Boundary
- Ranger District Boundary
- County Boundary
- Forest Service Land
- Bureau of Land Management (BLM) Land
- State Land
- Private Land
- Streams Closed to Fishing All Year
- Highway
- Paved Road Suitable for Passenger Cars
- Gravel Road Suitable for Passenger Cars
- Dirt Road Not Maintained for Passenger Cars
- Four-Wheel-Drive Road
- Pacific Crest National Scenic Trail
- Maintained Trail
- Infrequently Maintained Trail
- Spot Elevation
- Horizontal Control Station
- Landmark Object
- Quarry/Mine
- Gauging Station
- Gravel Pit
- Building
- Spring, Water Well
- Gate, Permanent
- Gate, Seasonal
- Power Transmission Line
- Woodland
- Forest Service Seasonal Work Station
- Forest Service Administrative Ede (not offset)
- Fire Station
- Forest Service Campground
- Forest Service Picnic Area
- Equestrian Facility
- Boat Ramp
- Winter Recreation

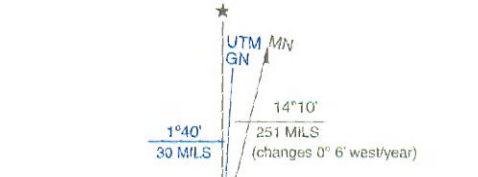
1:24,000 scale USGS/USFS  
Quadrangle Map Name and  
Area of Coverage



### INDEX TO USGS 1:24,000 SCALE TOPOGRAPHIC MAPS



Ordering Information:  
Mail: USGS Information Services, Box 25286, Denver Federal Center  
Denver, CO 80228  
303.750.4189  
Email: [infocentral@usgs.gov](mailto:infocentral@usgs.gov)  
Internet: <http://store.usgs.gov>  
Include file or material number, state, map title, scale and quantity.

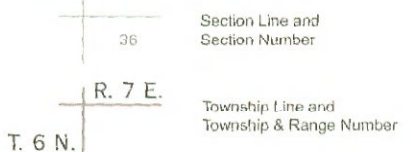


UTM ZONE 10 GRID AND 2009 MAGNETIC NORTH DECLINATION AT CENTER OF SHEET

UTM Zone 10 UTM Zone 11

UTM ZONE 11 GRID AND 2009 MAGNETIC NORTH DECLINATION AT CENTER OF SHEET

### MT. DIABLO MERIDIAN TOWNSHIP AND SECTION LINE CLASSIFICATION



Section Line and Section Number

Township Line and Township & Range Number

The richest values of wilderness lie not in the days of Daniel Boone, nor even in the present, but rather in the future... Aldo Leopold

Polyconic map projection, central meridian 119°45'.  
Red grid ticks are latitude and longitude a 1 minute intervals.  
Blue grid ticks are 1000-meter Universal Transverse Mercator (UTM) zones 10 and 11.  
1983 North American Datum Control by USGS and NOS/NOAA.