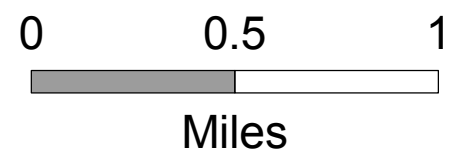


### Mount Hood Wilderness - Cloud Cap

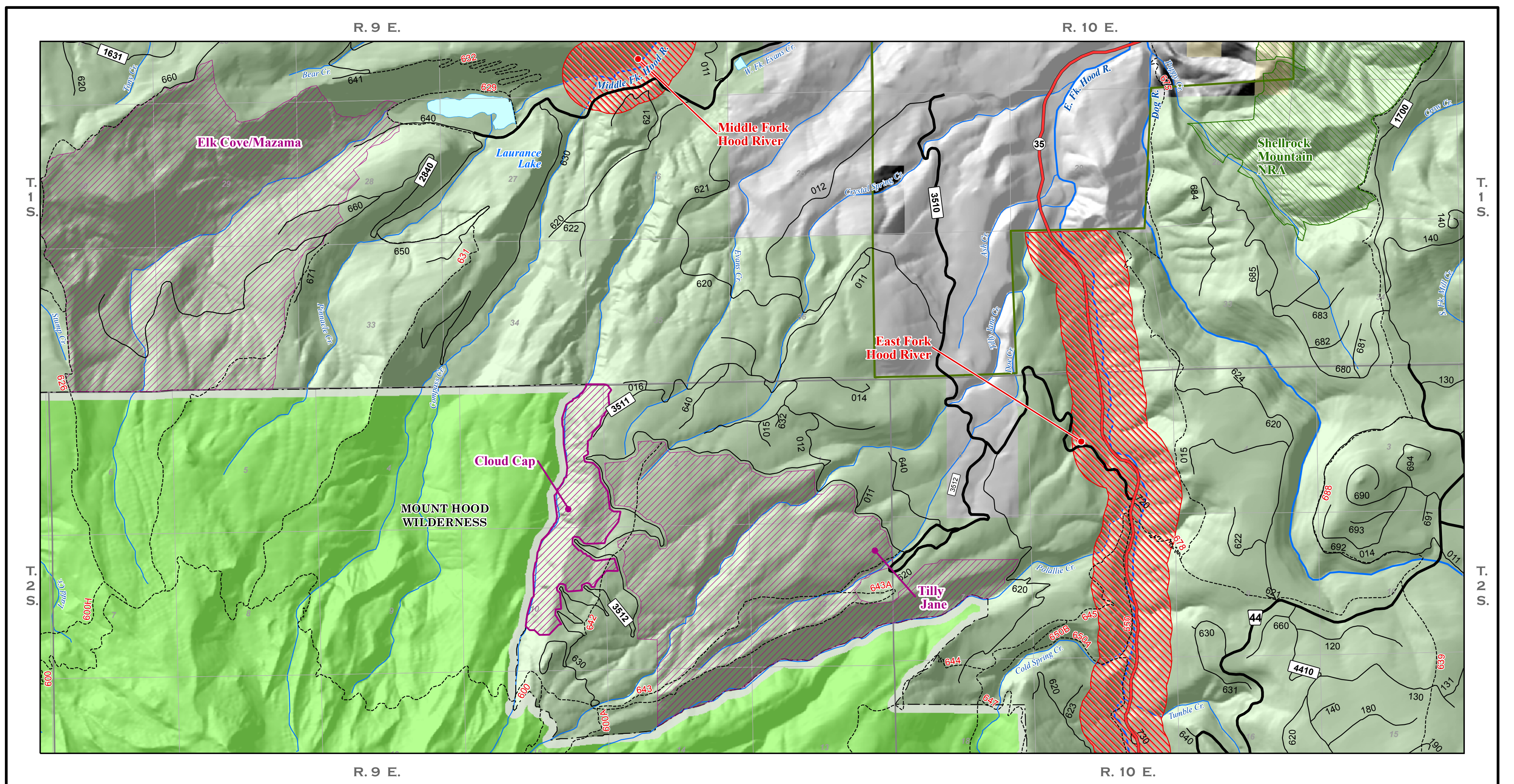
Prepared at the request of U. S. Senator Wyden - July 20, 2007

- |                  |                                   |                  |
|------------------|-----------------------------------|------------------|
| Cloud Cap        | <b>Existing US Forest Service</b> | <b>Base Data</b> |
| Wilderness Areas | Wilderness                        | Highways 35      |
|                  | Lakes                             |                  |
|                  | River                             |                  |
|                  | Creeks                            |                  |
|                  | Trails Trails: 643A               |                  |
|                  | FS Paved Roads                    |                  |
|                  | FS Other Roads                    |                  |



The reliability or suitability of this information for a particular purpose cannot be guaranteed. The data and product accuracy may vary due to compilation from various sources, including modeling and interpretation, and may not meet National Map Accuracy Standards. This information may be updated, corrected, or otherwise modified without notification.

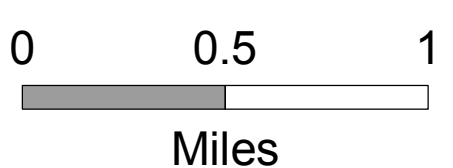
Locals: 023 Collectors: 4410 Arterials: 44



### Mount Hood Wilderness - Cloud Cap

Prepared at the request of U. S. Senator Wyden - July 20, 2007

- |                           |                                   |                  |
|---------------------------|-----------------------------------|------------------|
| Cloud Cap                 | <b>Existing US Forest Service</b> | <b>Base Data</b> |
| Wilderness Areas          | Mt. Hood NF                       | Private Land     |
| National Recreation Areas | Wilderness                        | BLM Lands        |
| Wild and Scenic Rivers    | Lakes                             | Highways 35      |
|                           | River                             |                  |
|                           | Creeks                            |                  |
|                           | Wild and Scenic Rivers            |                  |
|                           | Trails Trails: 643A               |                  |
|                           | FS Paved Roads                    |                  |
|                           | FS Other Roads                    |                  |



The reliability or suitability of this information for a particular purpose cannot be guaranteed. The data and product accuracy may vary due to compilation from various sources, including modeling and interpretation, and may not meet National Map Accuracy Standards. This information may be updated, corrected, or otherwise modified without notification.

Locals: 023 Collectors: 4410 Arterials: 44