

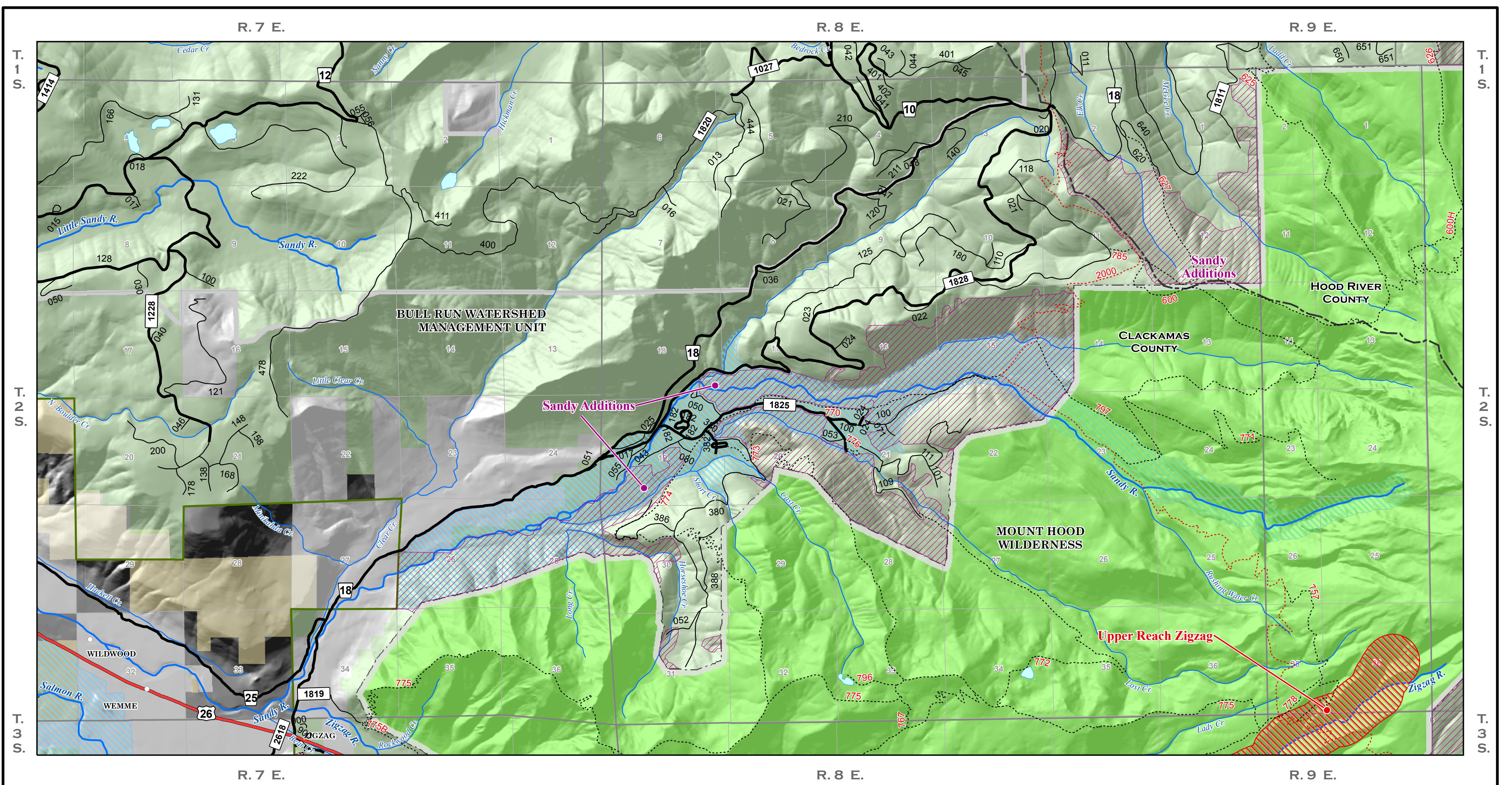
Mount Hood Wilderness - Sandy Additions

Prepared at the request of U. S. Senator Wyden - July 16, 2007

- | Additions | Existing US Forest Service | Base Data |
|------------------|--|--------------------|
| Sandy Additions | Wilderness | County Lines |
| Wilderness Areas | Lakes | Highways 26 |
| | River | |
| | Creeks | |
| | Pacific Crest Trail PCT: 2000 | |
| | All Other Trails Trails: 767 | |
| | FS Paved Roads | |
| | All Other FS Roads Locals: 023 Collectors: 1820 Arterials: 18 | |



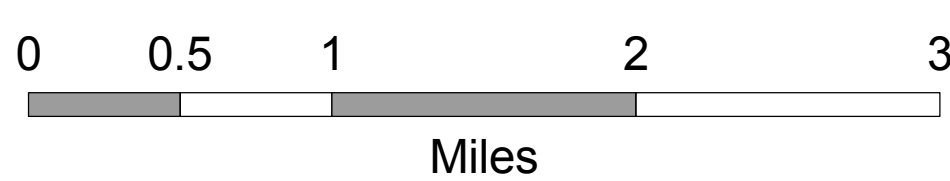
The reliability or suitability of this information for a particular purpose cannot be guaranteed. The data and product accuracy may vary due to compilation from various sources, including modeling and interpretation, and may not meet National Map Accuracy Standards. This information may be updated, corrected, or otherwise modified without notification.



Mount Hood Wilderness - Sandy Additions

Prepared at the request of U. S. Senator Wyden - July 16, 2007

- | Additions | Existing US Forest Service | Base Data |
|------------------------|--|--------------------|
| Sandy Additions | Mt. Hood NF | County Lines |
| Wild and Scenic Rivers | Wilderness | Private Land |
| | Lakes | BLM Lands |
| | River | Highways 26 |
| | Creeks | |
| | Wild and Scenic Rivers | |
| | Pacific Crest Trail PCT: 2000 | |
| | All Other Trails Trails: 767 | |
| | FS Paved Roads | |
| | All Other FS Roads Locals: 023 Collectors: 1820 Arterials: 18 | |



The reliability or suitability of this information for a particular purpose cannot be guaranteed. The data and product accuracy may vary due to compilation from various sources, including modeling and interpretation, and may not meet National Map Accuracy Standards. This information may be updated, corrected, or otherwise modified without notification.