

### Mount Hood Wilderness - Tilly Jane

Prepared at the request of U. S. Senator Wyden - July 20, 2007

#### Additions

- Tilly Jane
- Wilderness Areas

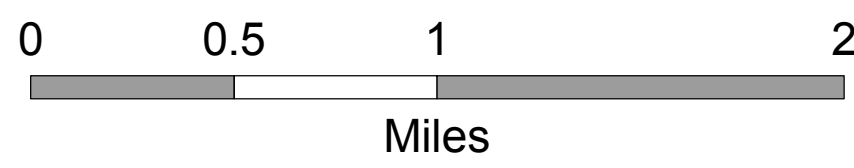
#### Existing US Forest Service

- Wilderness
- Lakes
- River
- Creeks
- Trails **Trails: 643A**
- FS Paved Roads
- FS Other Roads

#### Base Data

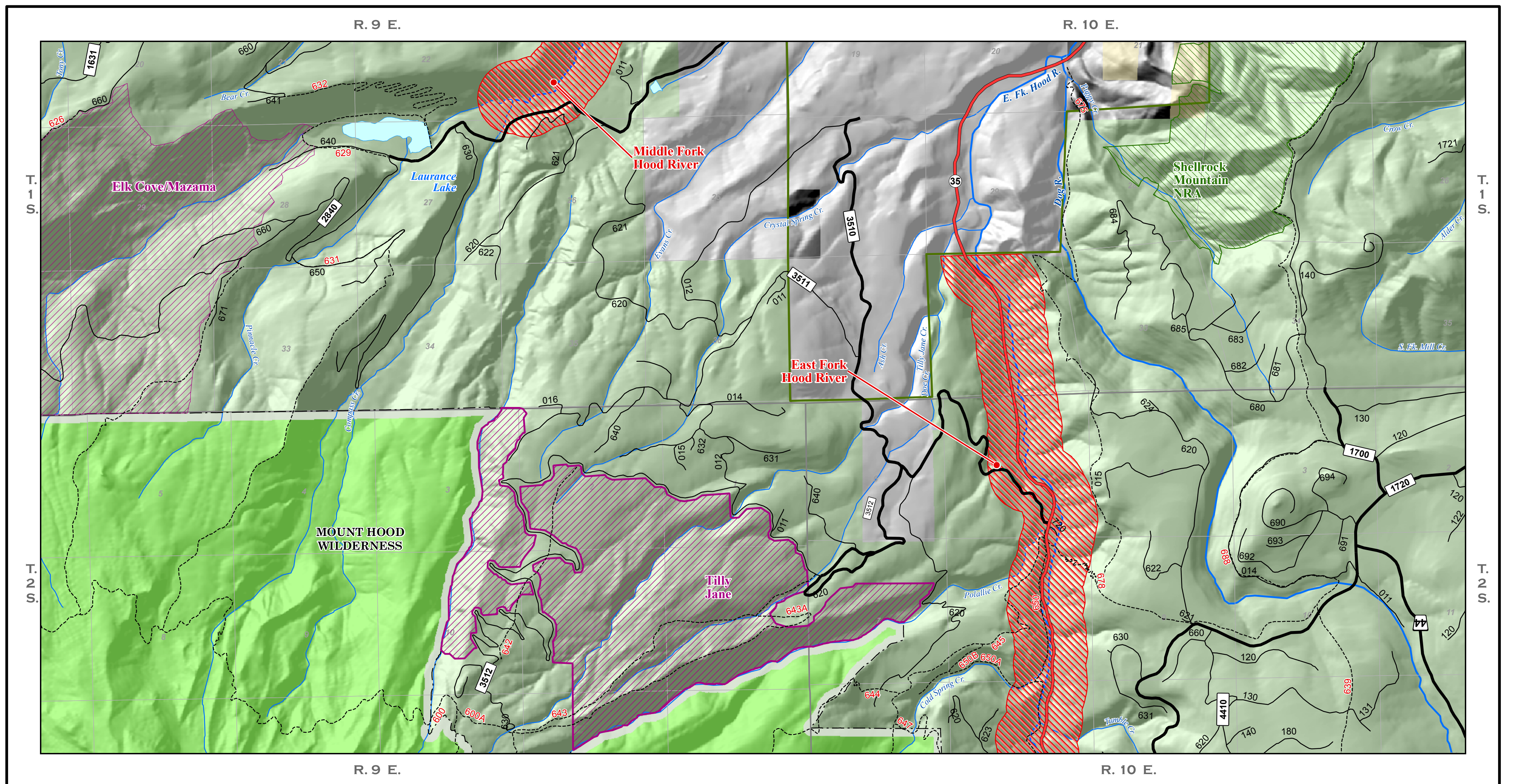
- Highways **35**

Locals: 023 Collectors: **4410** Arterials: **44**



**OREGON**

The reliability or suitability of this information for a particular purpose cannot be guaranteed. The data and product accuracy may vary due to compilation from various sources, including modeling and interpretation, and may not meet National Map Accuracy Standards. This information may be updated, corrected, or otherwise modified without notification.



### Mount Hood Wilderness - Tilly Jane

Prepared at the request of U. S. Senator Wyden - July 20, 2007

#### Additions

- Tilly Jane
- Wilderness Areas
- National Recreation Areas
- Wild and Scenic Rivers

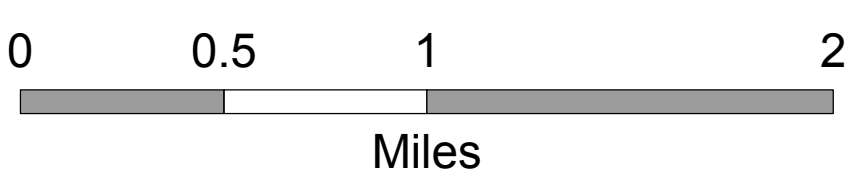
#### Existing US Forest Service

- Mt. Hood NF
- Wilderness
- Lakes
- River
- Creeks
- Wild and Scenic Rivers
- Trails **Trails: 643A**
- FS Paved Roads
- FS Other Roads

#### Base Data

- Private Land
- BLM Lands
- Highways **35**

Locals: 023 Collectors: **4410** Arterials: **44**



**OREGON**

The reliability or suitability of this information for a particular purpose cannot be guaranteed. The data and product accuracy may vary due to compilation from various sources, including modeling and interpretation, and may not meet National Map Accuracy Standards. This information may be updated, corrected, or otherwise modified without notification.