



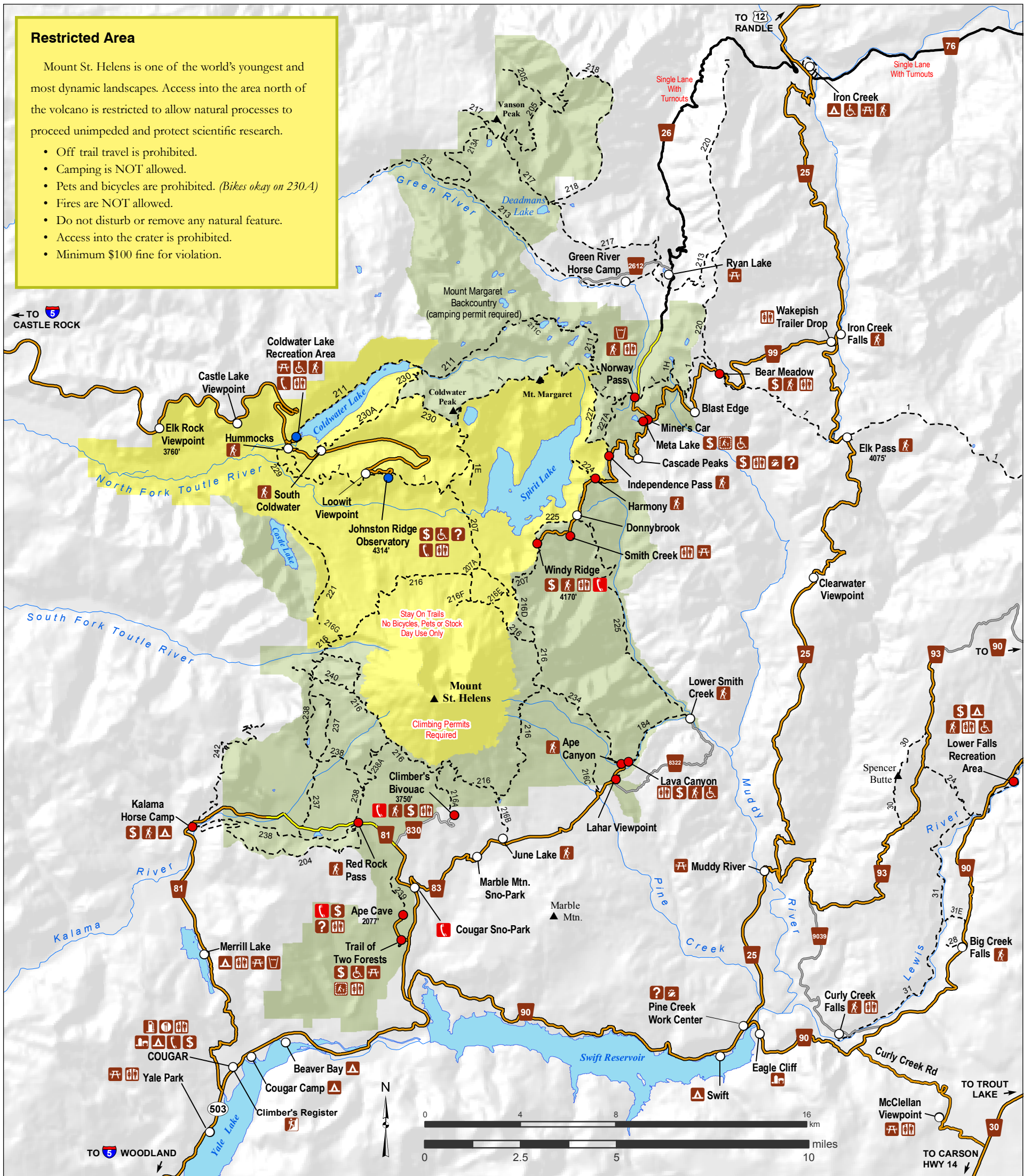
MOUNT ST. HELENS NATIONAL VOLCANIC MONUMENT



Restricted Area

Mount St. Helens is one of the world's youngest and most dynamic landscapes. Access into the area north of the volcano is restricted to allow natural processes to proceed unimpeded and protect scientific research.

- Off trail travel is prohibited.
- Camping is NOT allowed.
- Pets and bicycles are prohibited. *(Bikes okay on 230.A)*
- Fires are NOT allowed.
- Do not disturb or remove any natural feature.
- Access into the crater is prohibited.
- Minimum \$100 fine for violation.



Mount St. Helens National Volcanic Monument	Information	Trail Access	Restrooms	Fuel
Restricted Area	Passes Sold	Picnic Area	Water	Gift Shop
Free Use Site	Barrier Free	Interpretive Trail	Food	General Store
Recreation Day Pass Required	Campground	Telephone	Emergency Call Box	
Monument Pass Required				

For updated information and status of repairs:
<http://www.fs.fed.us/gpnf/recreation/current-conditions/>
 or call (360) 891-5000

Paved Road
Single lane Road, Paved with turnouts
Gravel Road
Road Closed by Flood Damage
Trail

Elevations are in feet

"We do not inherit the Earth from our ancestors, we borrow it from our children." — Chief Seattle