

**UNITED STATES DEPARTMENT OF AGRICULTURE
UNITED STATES FOREST SERVICE
OZARK-ST. FRANCIS NATIONAL FORESTS
Russellville, Arkansas**

Order No. 08-10-00-22-134

DEVELOPED RECREATION AREAS ORDER

Pursuant to 36 CFR 261.58(a), (f), (g), (u), (cc) and 261.54(d) it is hereby ordered that the prohibitions herein after set forth apply to the below listed Developed Recreation Areas within the Ozark-St. Francis National Forests. This closure is effective until December 31, 2026 or rescinded by an authorized Forest Official, whichever occurs first.

1. **Operating a vehicle in violation of the posted speed limit. (36 CFR 261.54(d))**
2. **Camping for a period longer than fourteen (14) consecutive days. (36 CFR 261.58(a))**
3. **Using a single campsite for more than one (1) immediate family, or by a group of more than six (6) persons. Or using a designated double campsite by more than two (2) immediate families, or by a group or more than twelve (12) persons. (36 CFR 261.58(f))**
4. **Parking or leaving a vehicle in violation of a posted instructions. (36 CFR 261.58(g))**
5. **Being in the area between 10:00 p.m. and 6:00 a.m. except a person who is camping or who is visiting a person camping in that area. (36 CFR 261.58(u))**
6. **Possessing a glass container on the swimming beach or within the designated swimming area. (36 CFR 261.58(cc))**

The prohibitions apply to the following developed recreation areas:

Barkshed	Haw Creek Falls	Richland Creek
Bayou Bluff	Horsehead Lake	Sam's Throne
Blanchard Springs	Lake Wedington	Shores Lake
Brock Creek	Long Pool	Sorghum Hollow
Cove Lake	Moccasin Gap Horse Camp	Spring Lake
Fairview	Ozone	White Rock Mountain
Gunner Pool	Redding	Wolf Pen

Pursuant to 36 CFR 261.50(e), the following persons are exempt from this order:

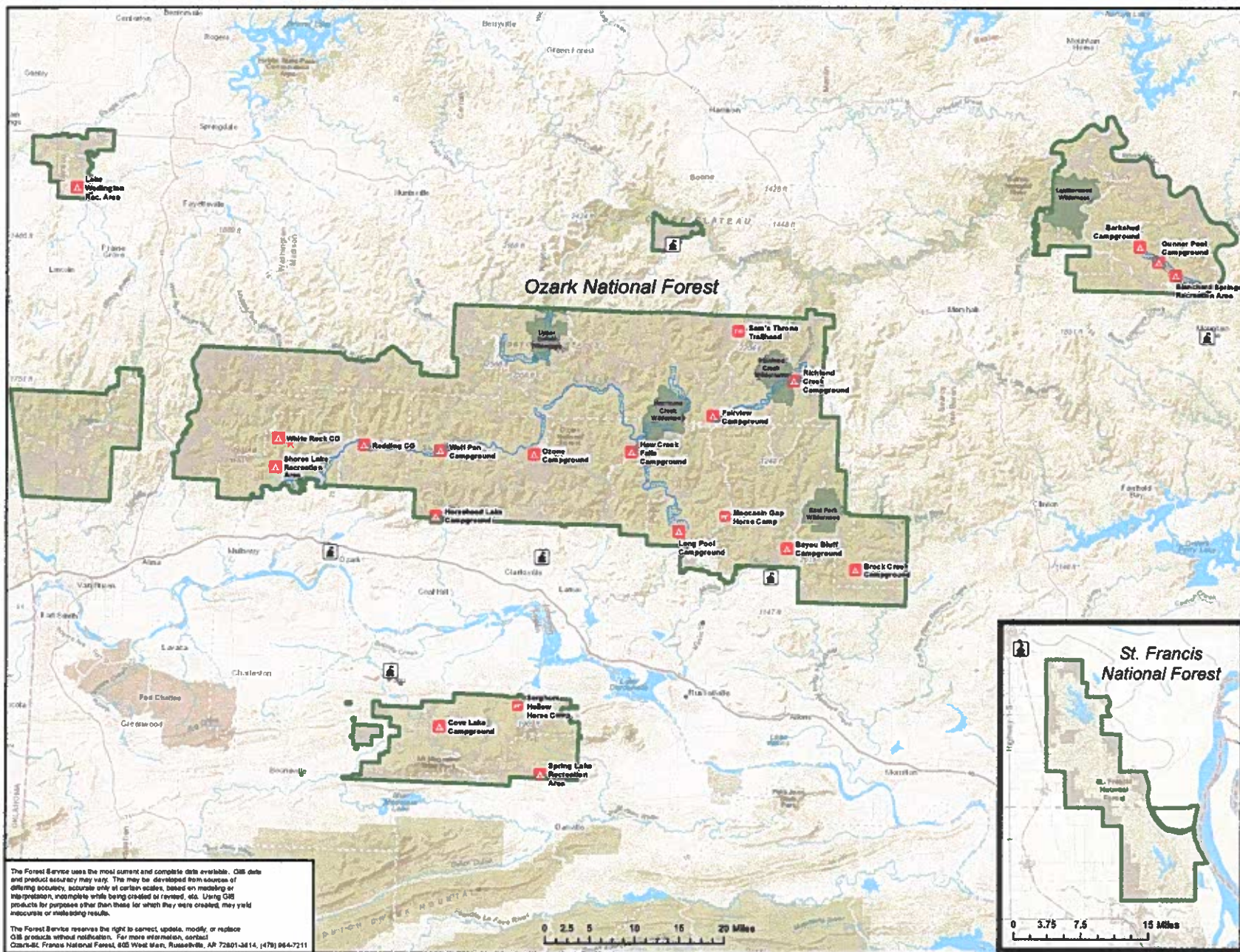
1. Persons with a permit specifically authorizing the otherwise prohibited act or omission.
2. Any Federal, State, or local officer or member of an organized rescue or fire fighting force in the performance of an official duty.

Executed in Russellville, Arkansas, this 1 day of August 2022.



LORI D. WOOD
Forest Supervisor
Ozark-St. Francis National Forests

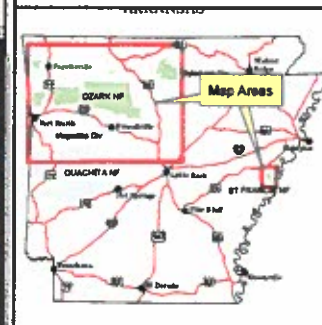
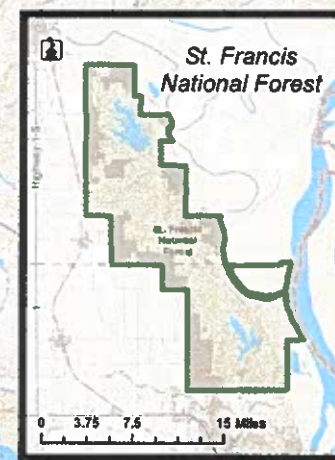
Violation of these prohibitions is punishable by a fine of not more than \$5,000 for an individual and \$10,000 for an organization, or imprisonment for not more than six months, or both. (16 U.S.C. 551 and 18 U.S.C. 3559 and 3571).



General Forest Developed Recreation Areas Supervisor's Order

Ozark-St. Francis National Forests
 Sylamore Ranger District
 Big Piney Ranger District
 Pleasant Hill Ranger District
 Boston Mountain Ranger District
 Magazine Ranger District
 St. Francis Ranger District

- Forest Service Administrative Sites
- Recreation Sites**
- Campground
 - Horse Camp
 - Visitor Center
 - Trailhead
 - Wild and Scenic River Corridor
 - Wilderness
 - Private Land



The Forest Service uses the most current and complete data available. GIS data and product accuracy may vary. This may be developed from sources of differing accuracies, accurate only at certain scales, based on modeling or interpretation, incomplete while being created or revised, etc. Using GIS products for purposes other than those for which they were created, may yield inaccurate or misleading results.

The Forest Service reserves the right to correct, update, modify, or replace GIS products without notification. For more information, contact Ozark-St. Francis National Forest, 605 West Main, Russellville, AR 72801-3614, (478) 964-7211

1000001 Theodor T. Fennell and Susan Fennell 03/06/06 04:00
 037_Fennell_Ozark-St. Francis National Forest Map Areas