

**UNITED STATES DEPARTMENT OF AGRICULTURE
UNITED STATES FOREST SERVICE
OZARK-ST. FRANCIS NATIONAL FORESTS
St. Francis National Forest
Marianna, Arkansas**

Order No. 08-10-07-22-142

FOREST ORDER

**Swimming or Being in the Water Outside of Designated Swimming Area and
Possessing or Operating a Motorboat**

Pursuant to 36 CFR 261.50(a) and (b), the following acts are prohibited on the area, roads, and trails described in this order as Bear Creek Lake and Storm Creek Lake Recreation Areas. This closure is effective until December 31, 2026 or rescinded by an authorized Forest Official, whichever occurs first.

The following prohibited acts are set forth in 36 CFR 261.58:

- 1. Swimming or being in the water outside the designated swim area. (36 CFR 261.58(k))**
- 2. Possessing or operating a motorboat in such a manner that it is an impediment or hazard to the safety and convenience of any person. (36 CFR 261.58(n))**
- 3. Operating a motorboat with an excess of 10 horsepower. (36 CFR 261.58(n)).**
Boats equipped with motors larger than 10 horsepower must have the motor disabled prior to launching the boat by one of the following methods:
 - 1. Complete removal of the propeller.**
 - 2. Removal of the fuel line from the boat.**
 - 3. Removal of at least one (1) spark plug, or spark plug wire from the boat.**
- 4. Storing or leaving a watercraft along the shorelines, except at docking facilities that are under special use permit, for more than three (3) consecutive days. (36 CFR 261.58(p))**

Pursuant to 36 CFR 261.50(e), the following persons are exempt from this order:

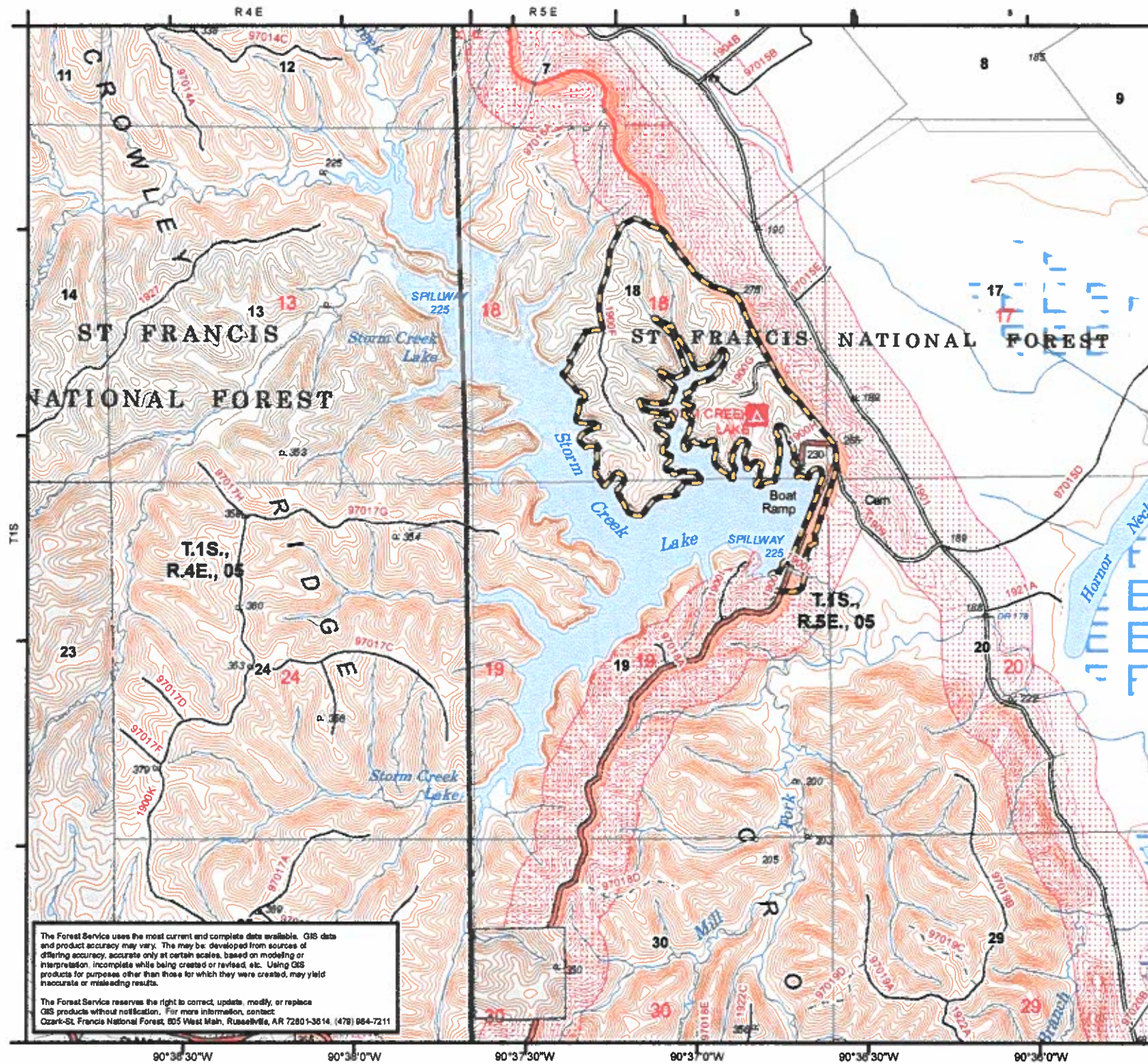
- 1. Persons with a permit specifically authorizing the otherwise prohibited act or omission.**
- 2. Any Federal, State or local officer or member of an organized rescue or fire fighting force in the performance of an official duty.**

Executed in Russellville, Arkansas, this 1 day of August 2022.



LORI D. WOOD
Forest Supervisor
Ozark-St. Francis National Forests

Violation of these prohibitions is punishable by a fine of not more than \$5000 for an individual and \$10,000 for an organization, or imprisonment for not more than six months, or both. 16 USC 551 and 18 USC 3559 and 3571.



Storm Creek Lake Supervisor's Order

Ozark-St. Francis National Forests
Sylamore-St. Francis Ranger District

Lee and Phillips Counties, Arkansas
Legal Description:
T.1S R.5.E. Sections 18, 19

- Recreation Area
- Campground
- Picnic & Day Use
- Trailhead

Roads by Operation Maintenance Level

- Closed
- High Clearance Vehicles
- Suitable for Passenger Cars
- Moderate Degree of User Comfort
- High Degree of User Comfort
- Scenic Byway Corridor
- Trail
- Private Land



The Forest Service uses the most current and complete data available. GIS data and product accuracy may vary. This may be developed from sources of differing accuracy, accurate only at certain scales, based on modeling or interpretation, incomplete while being created or revised, etc. Using GIS products for purposes other than those for which they were created, may yield inaccurate or misleading results.

The Forest Service reserves the right to correct, update, modify, or replace GIS products without notification. For more information, contact:
Ozark-St. Francis National Forest, 805 West Main, Russellville, AR 72801-3614, (478) 664-7211

