

**UNITED STATES DEPARTMENT OF AGRICULTURE  
UNITED STATES FOREST SERVICE  
OZARK-ST. FRANCIS NATIONAL FORESTS  
Russellville, Arkansas**

Order No. 08-10-00-22-138

**FOREST WILDERNESS ORDER**

Pursuant to 36 CFR 261.57(h), it is hereby ordered that the prohibitions herein after set forth apply to the below listed Wilderness Areas within the Ozark-St. Francis National Forests. This closure is effective until December 31, 2026 or rescinded by an authorized Forest Official, whichever occurs first.

**1. Possessing or using a wagon, cart, or other mechanized vehicle. (36 CFR 261.57(h))**

The prohibition applies to the following wilderness areas:

Upper Buffalo Wilderness	East Fork Wilderness
Hurricane Creek Wilderness	Leatherwood Wilderness
Richland Creek Wilderness	

Pursuant to 36 CFR 261.50(e), the following persons are exempt from this order:

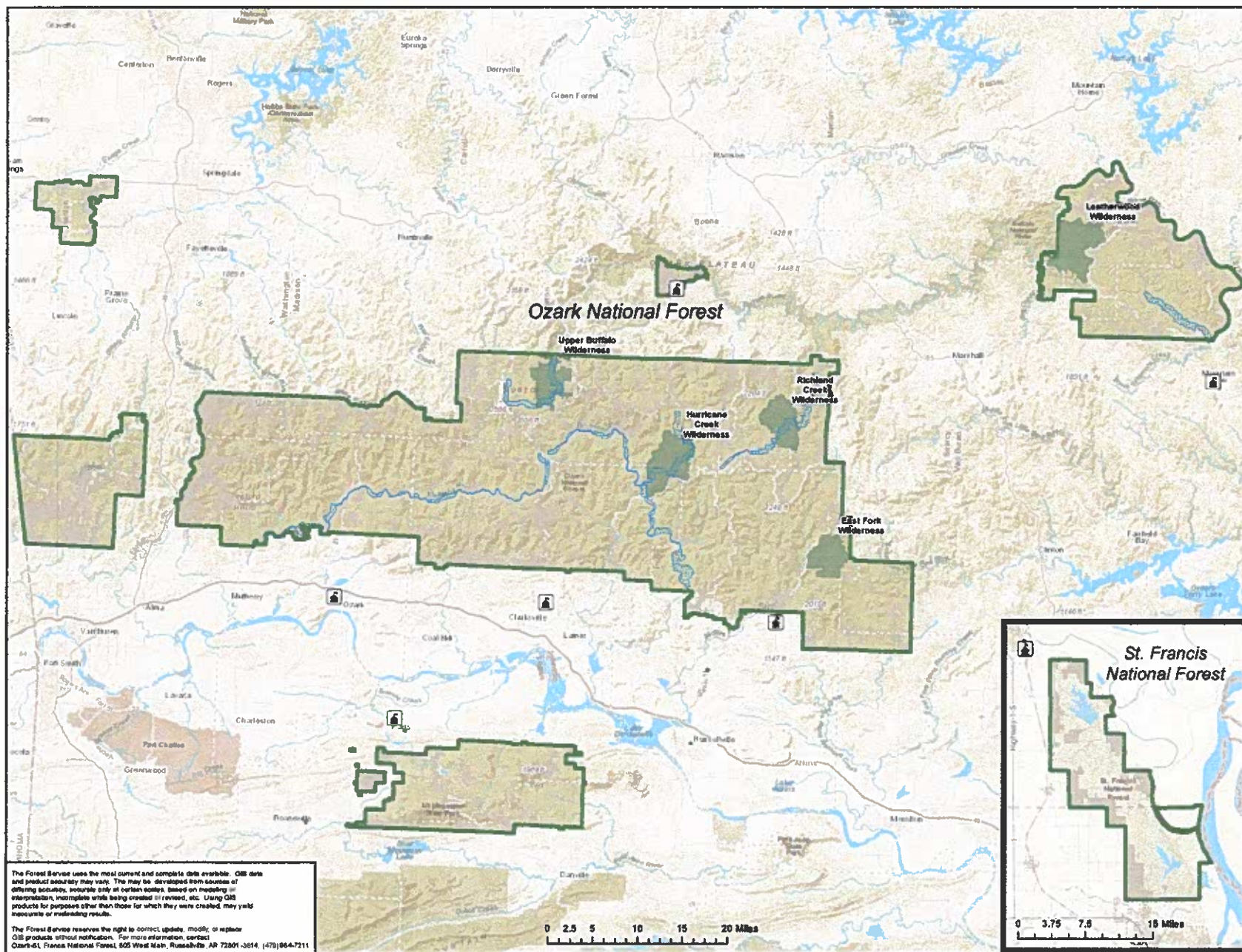
1. Persons with a permit specifically authorizing the otherwise prohibited act or omission.
2. Any Federal, State, or local officer or member of an organized rescue or fire fighting force in the performance of an official duty.

Executed in Russellville, Arkansas, this 1 day of August 2022.



LORI D. WOOD  
Forest Supervisor  
Ozark-St. Francis National Forests

Violation of these prohibitions is punishable by a fine of not more than \$5,000 for an individual and \$10,000 for an organization, or imprisonment for not more than six months, or both. (16 U.S.C. 551 and 18 U.S.C. 3559 and 3571).



**General Forest  
Wilderness Area  
Supervisor's Order**

**Ozark-St. Francis National Forests**  
**Sylamore Ranger District**  
**Big Piney Ranger District**  
**Pleasant Hill Ranger District**  
**Boston Mountain Ranger District**  
**Magazine Ranger District**  
**St. Francis Ranger District**

- Forest Service Administrative Sites  
Wild and Scenic River Corridor  
Wilderness  
Private Land



13700211 Thursday, 17 April 2014 14:00  
UPTON Science City, Forest Road, Oxford OX1 3PS