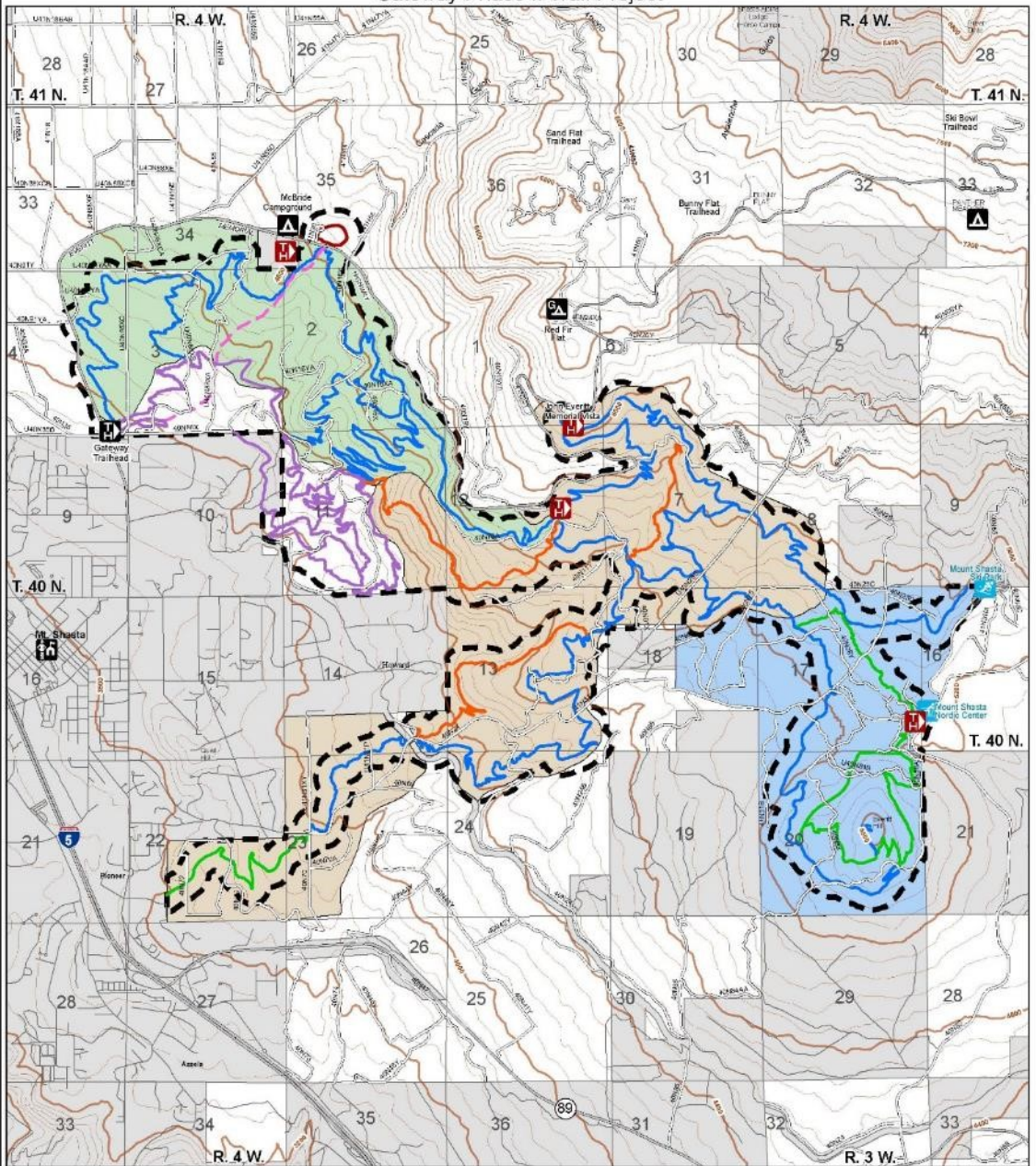


# Gateway Phase II Trail Project



**Disclaimer:**

The Forest Service uses the most current and complete data available. GIS data and product accuracy may vary. Data may be developed from sources of differing accuracy, accurate only at certain scales, based on modeling or interpretation, incomplete while being created or revised. Using GIS products for purposes other than those for which they were created, may yield inaccurate or misleading results.

The Forest Service reserves the right to correct, update, modify, or replace, GIS products without notification.

March 18, 2019 ALN

- |                                 |                                   |                                     |                 |                       |
|---------------------------------|-----------------------------------|-------------------------------------|-----------------|-----------------------|
| Project Boundary                | Gateway Phase I Trails            | Proposed Gateway Phase 2 Trailheads | Downhill Skiing | Forest Service Roads  |
| Proposed Phase II Trails        | Community Zone                    | Gateway Trailhead                   | Nordic Center   | Other Roads           |
| Beginner                        | Big Mountain Zone                 | Campground                          | Ranger Station  | National Forest Lands |
| Intermediate                    | Learning Zone                     | Group Campground                    | Snowpark        | Other Ownership       |
| Advanced                        | MoBride Campground Expansion Area |                                     |                 |                       |
| Unauthorized User Created Trail |                                   |                                     |                 |                       |

Contour Interval is 40 feet