

## MANAGEMENT AREA #15

### Amendment to Management Direction

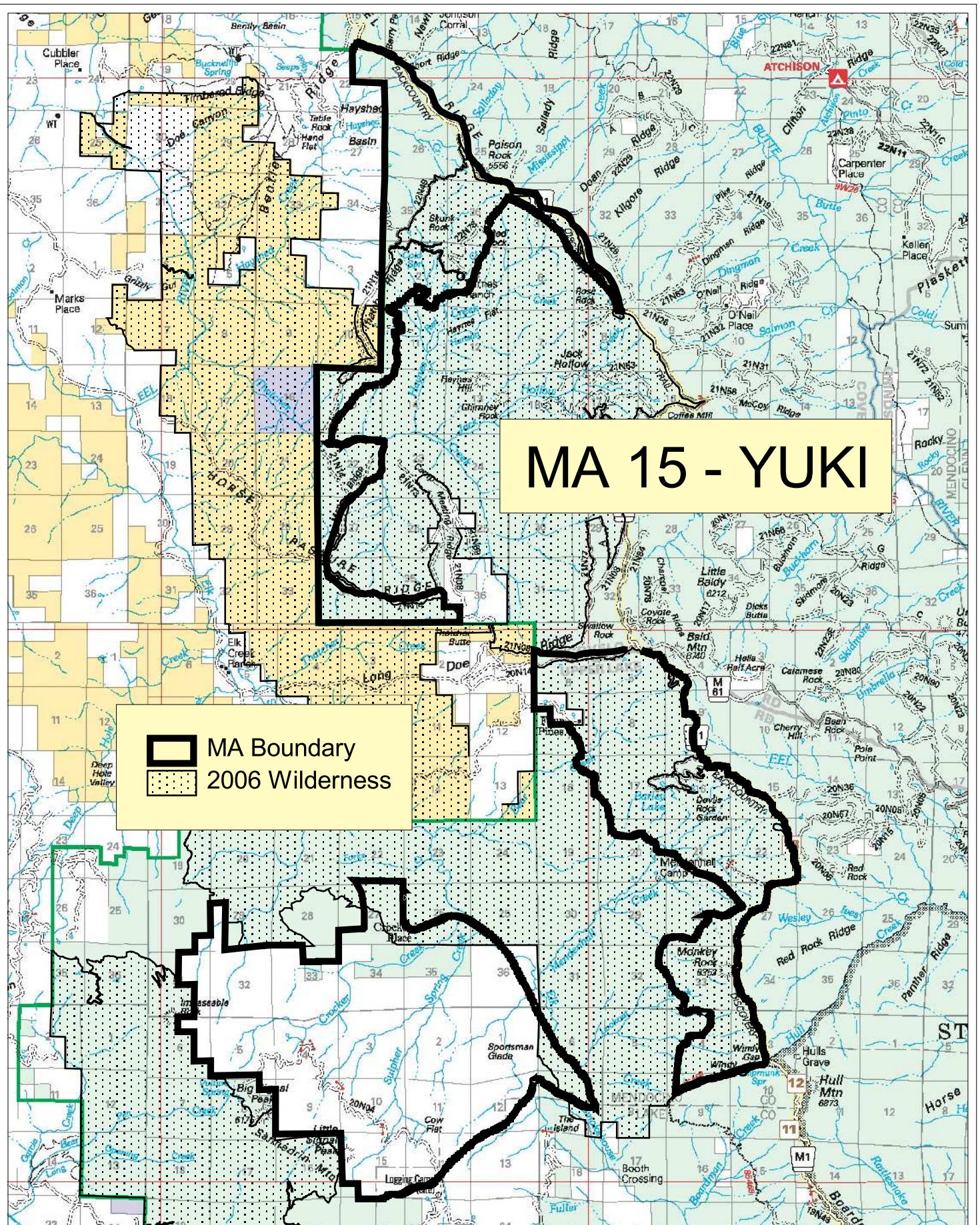
Apply management direction from Prescription 9 – Wilderness to portions of this Management Area that were added to the Yuki Wilderness by the Northern California Coastal Wild Heritage Wilderness Act of 2006 (2006 Act). See map, page IV-140b.

Existing Management Area direction still applies in the new wilderness portions, except where it conflicts with direction from Prescription 9.


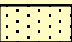
Do not close, or prohibit motorized or mechanical access, on “cherry-stemmed roads” that were open to the public as of the date of enactment of the 2006 Act, except for purposes of significant resource protection or public safety [Sec. 4(m)]. A cherry-stemmed road is defined in Sec. 4(m)(1) as one that “...is excluded from the wilderness areas designated by [the Act] by a non-wilderness corridor having designated wilderness on both sides...” Cherry-stemmed roads in this management area include:

- 22N49 from Thatcher Ridge to Barnes Ranch
- 22N49B to Skunk Lake
- 22N61 to Patrol Camp
- 20N122 near Bald Mountain
- 20N65B east of Barley Lake

The fact that nonwilderness activities or uses can be seen or heard from areas within wilderness areas designated by the 2006 Act does not preclude the conduct of those activities or uses outside the wilderness boundary [Sec. 4(l)(2)].



# MA 15 - YUKI

 MA Boundary  
 2006 Wilderness

1 0 1 2 Miles

Amendment #2007-01

IV-140b