

MANAGEMENT AREA #25

Amendment to Management Direction

Apply management direction from Prescription 9 – Wilderness to portions of this Management Area that were added to the Yolla Bolly - Middle Eel Wilderness by the Northern California Coastal Wild Heritage Wilderness Act of 2006 (2006 Act). See map, page IV-180b.

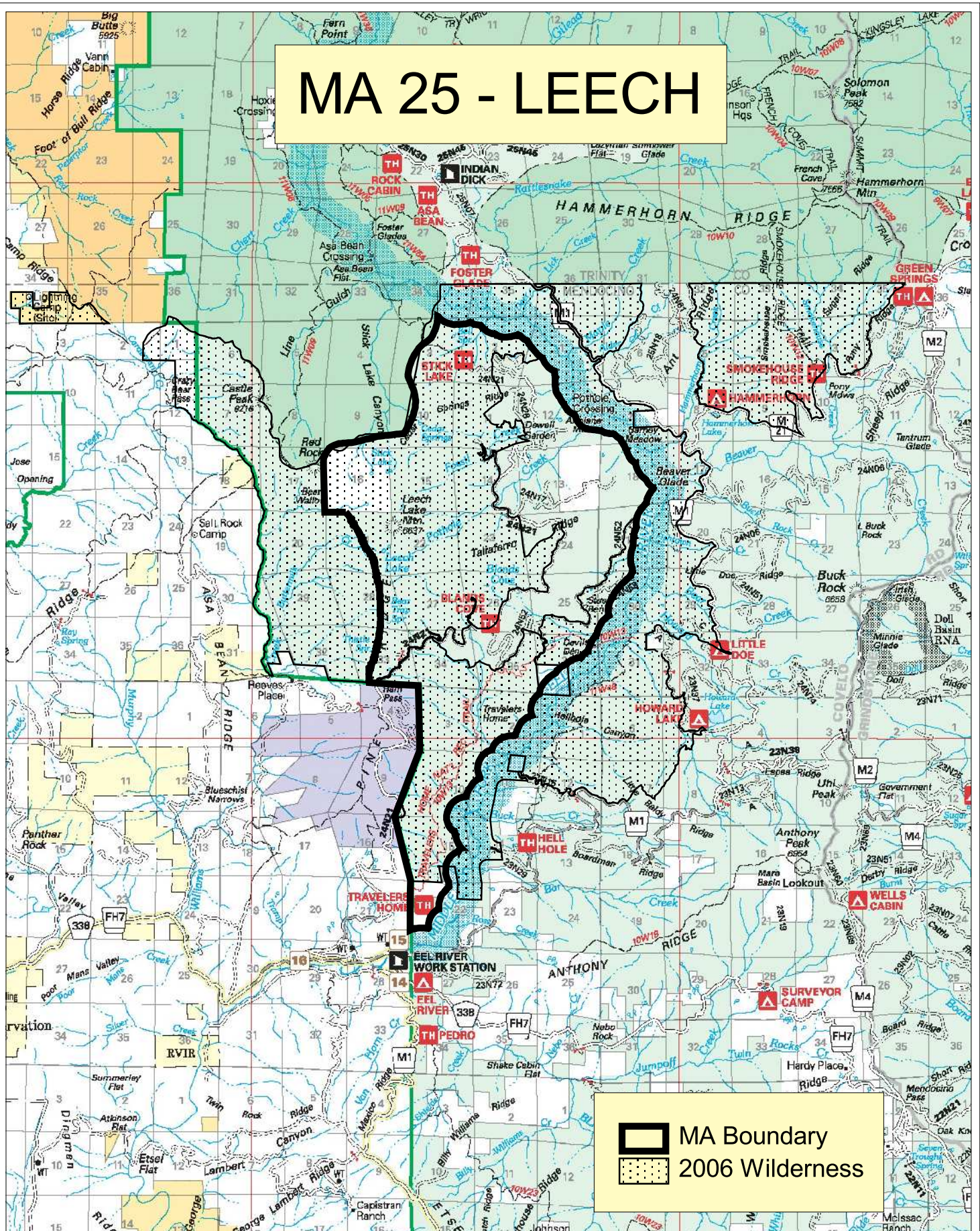
Existing Management Area direction still applies in the new wilderness portions, except where it conflicts with direction from Prescription 9.

Do not close, or prohibit motorized or mechanical access, on “cherry-stemmed roads” that were open to the public as of the date of enactment of the 2006 Act, except for purposes of significant resource protection or public safety [Sec. 4(m)]. A cherry-stemmed road is defined in Sec. 4(m)(1) as one that “...is excluded from the wilderness areas designated by [the Act] by a non-wilderness corridor having designated wilderness on both sides...” Cherry-stemmed roads in this management area include:

- 24N30A located near Grass Lake
- 24N90 and 24N90B near Blands Cove
- 24N57 accessing a private parcel south of Devils Den
- 24N21 and 24N21H, near Ham Pass

The fact that nonwilderness activities or uses can be seen or heard from areas within wilderness areas designated by the 2006 Act does not preclude the conduct of those activities or uses outside the wilderness boundary [Sec. 4(l)(2)].

MA 25 - LEECH



1 0 1 2 Miles

Amendment #2007-01

IV-180b