

MANAGEMENT AREA #18

Amendment to Management Direction

Apply management direction from Prescription 9 – Wilderness to portions of this Management Area that were added to the Snow Mountain Wilderness by the Northern California Coastal Wild Heritage Wilderness Act of 2006 (2006 Act). See map, page IV-154b.

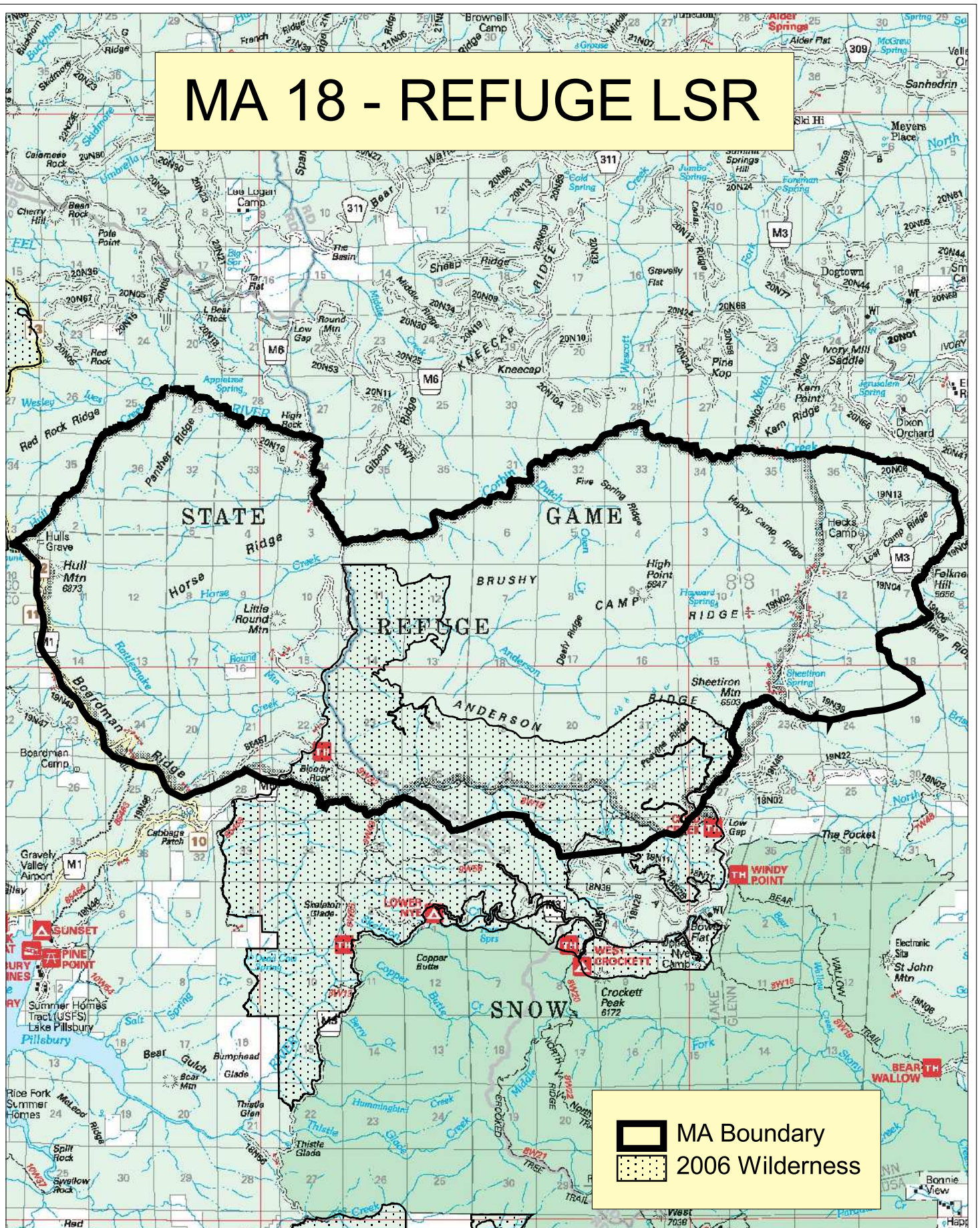
Existing Management Area direction still applies in the new wilderness portions, except where it conflicts with direction from Prescription 9.

Do not close, or prohibit motorized or mechanical access, on “cherry-stemmed roads” that were open to the public as of the date of enactment of the 2006 Act, except for purposes of significant resource protection or public safety [Sec. 4(m)]. A cherry-stemmed road is defined in Sec. 4(m)(1) as one that “...is excluded from the wilderness areas designated by [the Act] by a non-wilderness corridor having designated wilderness on both sides...” Cherry-stemmed roads in this management area include:

- 19N12B and 19N12D on lower Anderson Ridge
- 19N33 and 19N35 northwest of Low Gap
- ONE OR BOTH OF THESE PAIR OF CHERRY-STEMS MAY BE IN ERROR, AS ALL OF THESE ROADS ARE OBJ ML1 (CLOSED TO PUBLIC VEHICLE USE). WE WILL BE SEEKING CLARIFICATION ON THIS IN THE PROCESS OF DEVELOPING THE OFFICIAL BOUNDARY MAP AND LEGAL DESCRIPTION PURSUANT TO Sec. 4(b).

The fact that nonwilderness activities or uses can be seen or heard from areas within wilderness areas designated by the 2006 Act does not preclude the conduct of those activities or uses outside the wilderness boundary [Sec. 4(l)(2)].

MA 18 - REFUGE LSR



1 0 1 2 Miles

Amendment #2007-01

IV-154b