

**MANAGEMENT AREA #43  
ELK CREEK BACKCOUNTRY AREA**

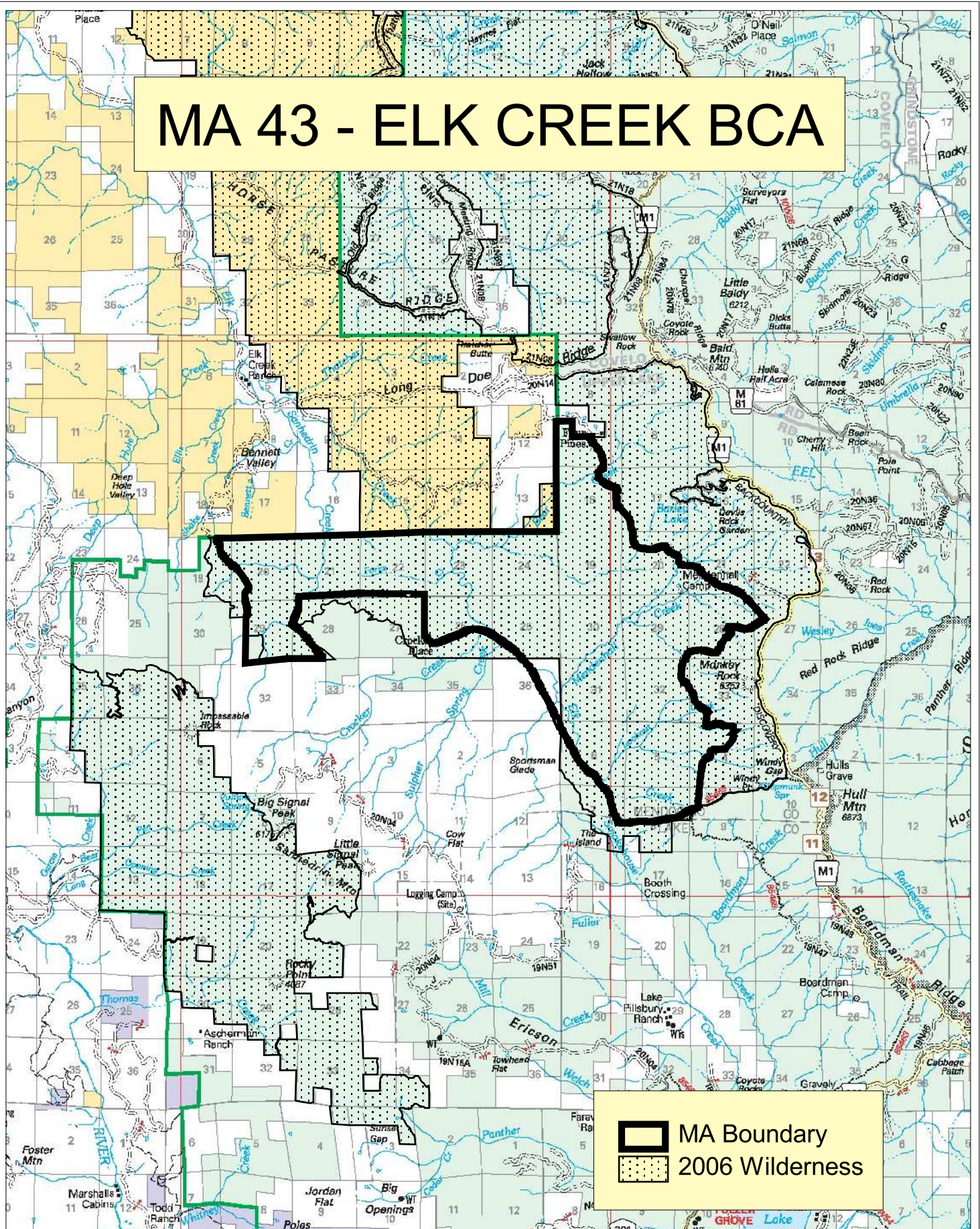
Amendment to Management Direction

Apply management direction from Prescription 9 – Wilderness to portions of this Management Area that were added to the Yuki Wilderness by the Northern California Coastal Wild Heritage Wilderness Act of 2006 (2006 Act). See map, page IV-258a.

Existing Management Area direction still applies in the new wilderness portions, except where it conflicts with direction from Prescription 9.

The fact that nonwilderness activities or uses can be seen or heard from areas within wilderness areas designated by the 2006 Act does not preclude the conduct of those activities or uses outside the wilderness boundary [Sec. 4(l)(2)].

# MA 43 - ELK CREEK BCA



Amendment #2007-01

IV-258b